

ASX Announcement

June 2015 Quarterly Report*Exploration and evaluation work gathering momentum at two promising Canadian gold projects***Highlights:**

- Re-logging and assaying of historical drill core is continuing at the Cameron Gold Project in Ontario, paving the way for a revised Mineral Resource estimate and the completion of the Preliminary Economic Assessment (PEA) in Q4 2015.
- Revised costings within the PEA on the Cameron Project demonstrate material reductions in capital and operating costs.
- 2015 field season commences at Cameron targeting additional near-mine ounces.
- Joint venture agreement signed with Northern Superior Resources Inc. (TSX-V: SUP) giving Chalice the right to earn a 65% interest in the advanced Croteau Est Gold Project by spending C\$4M within three years with a minimum commitment of C\$0.5M.
- At the main prospect, the Croteau Bouchard Shear Zone (CBSZ), continuous plus 1 g/t Au mineralisation has been defined over a strike length of 1.1km, a width of 180m and to a depth of 575m. The mineralisation at CBSZ remains open in all directions.
- Resource and exploration drilling commenced in June 2015 at Croteau Est with the aim of delineating a maiden JORC/NI43-101 Resource at CBSZ in Q4 2015 – assays pending.
- The Company has a year-to-date \$4.9M foreign exchange gain.
- Chalice's balance sheet remains strong with cash of ~A\$40M at 30 June 2015.

Overview:

During the June Quarter, Chalice Gold Mines Limited (ASX: CHN, TSX: CXN – “Chalice” or “the Company”) continued to grow and develop its Canadian gold portfolio with the signing of a joint venture agreement over the advanced **Croteau Est Gold Project** (“Croteau Est”) and work progressing on a Preliminary Economic Assessment (PEA) of its 100%-owned **Cameron Gold Project** (“Cameron”).

Exploration and resource definition drilling recently commenced at Croteau Est and the PEA is well advanced at Cameron, paving the way for what is expected to be an active period for the Company in the latter part of 2015. Chalice also continues to target additional high-potential opportunities in the region and elsewhere.

1. Cameron Gold Project (Chalice 100%)

The Cameron Gold Project is an advanced resource project located in the highly mineralised southern part of western Ontario in Canada, approximately 80km south-east of the town of Kenora. The Project has a number of attractive attributes, including good grades (Measured and Indicated Resource of 675,900oz at 2.09 g/t Au plus Inferred Resources of 591,300oz at 2.61 g/t) (refer Appendix 1 for full details), low political risk in a mature mining jurisdiction with low costs, conventional metallurgy, and a mid-sized gold project that is well within Chalice's funding and development capability.

Chalice Gold Mines Limited, Level 2, 1292 Hay Street, West Perth, Western Australia

T: +618 9322 3960 F: +618 9322 5800 E: info@chalicegold.com

www.chalicegold.com

Cameron Gold Project – Preliminary Economic Assessment (PEA)

Chalice is undertaking a Preliminary Economic Assessment (“PEA”) of the Cameron Gold Project to take advantage of the improving Canadian Dollar gold price, declining costs across the industry and other recently identified opportunities to improve the project’s economics.

The engineering and costing aspects of the PEA are largely complete with initial results demonstrating material reductions in both the capital estimate and operating costs compared to the original PEA released by Coventry Resources Limited, the previous owner of the deposit, in 2013.

As part of the PEA process, the Company is aiming to de-risk the existing Mineral Resource by sampling and assaying core from historical drilling which has not previously been assayed and which has the potential to be included in a re-modelled and updated Mineral Resource.

At the end of June, approximately 29,000m of core (from a total of 90,000m) has been re-logged with approximately 5,000m re-assayed. The re-logging and re-sampling exercise is expected to be completed by the mid-September 2015, after which the drilling data will be included in a new Mineral Resource.

The results of the PEA are on track to be released in Q4 2015.

Exploration Activities

The exploration field season at Cameron commenced at the end of the Quarter following a disciplined target generation and ranking exercise which has identified numerous exploration targets. Of these, 10 high priority targets have been selected with the potential to increase open pit tonnes within a 25km trucking distance of the Cameron mine.

The targets have been defined from co-incidental geochemical (MMI, rock chips, till), aeromagnetic and previous drill anomalism. The exploration program will follow a process of additional rock chip sampling, trenching and drilling and is expected to be completed by October 2015.

Regional soil sampling and prospecting over existing and newly acquired tenure has also commenced, the results of which are expected to form the basis of trenching and/or drilling during the 2016 field season.

2. Croteau Est Project (Chalice earning 65%)

Project Overview

During the Quarter, Chalice secured an agreement to earn a majority stake in a prospective and advanced gold property, Croteau Est, in Canada (Figure 1). The Company has entered into a joint venture agreement with Canadian gold explorer Northern Superior Resources Inc. (TSX-V: SUP) giving it the right to earn a 65% interest in this property by spending a total of C\$4 million on exploration over three years, with a minimum exploration commitment of C\$500,000 in the first 12 months.

Upon earning a 65% interest, the joint venture becomes a contributing joint venture which is subject to a standard dilution calculation.

The Croteau Est property is located close to a number of historical copper-gold mines in the Chapais-Chibougamou region. The project is well serviced by road, rail and air services, offering year-round access, and is located close to grid power (Figure 1).

The property includes a coherent, well defined zone of plus 1 g/t Au mineralisation at the Croteau Bouchard Shear Zone (“CBSZ”) (Figure 2) plus extensive, highly prospective geological trends with outstanding gold geochemical anomalies. The tenement package also includes a 25km strike length of prospective stratigraphy, including 17 drill ready targets requiring follow-up. A total of 44 diamond drill-holes have previously been completed into the CBSZ.

Previous drilling has returned some outstanding intersections including **10.55m @ 10.63g/t Au from 179.95m (CRO11-05)**, **19.55m @ 8.55g/t Au from 90.75m (CRO12-10)**, **6.85m @ 21.32g/t Au from 240.65m (CRO12-46)** (true widths of the drill hole intersections cannot be determined with the information currently available). A full listing of drill statistics for the CBSZ is provided in Appendix 2.

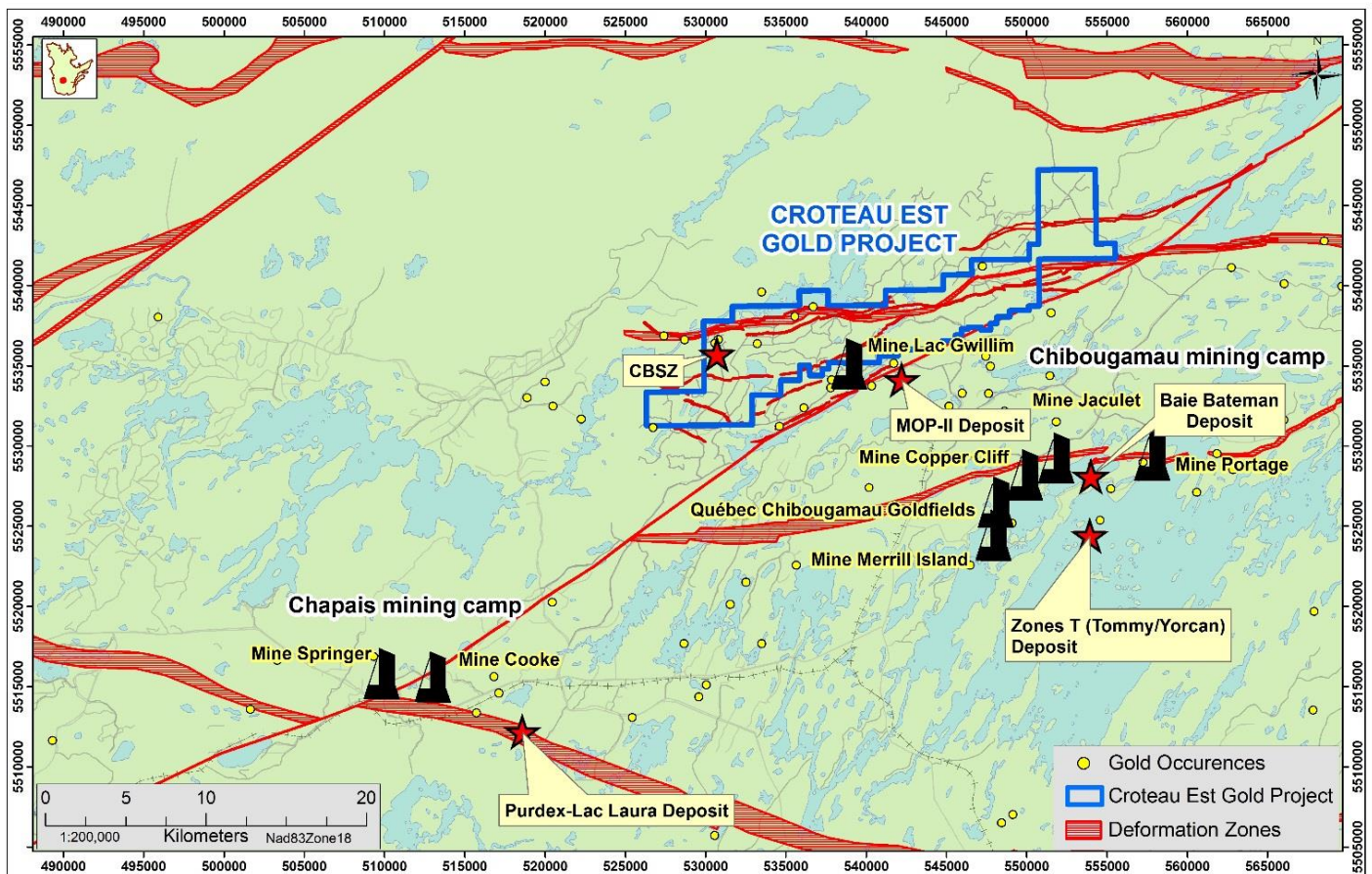


Figure 1: Croteau Est Location, Québec

Croteau Est – 2015 Resource and Exploration Drilling

In June 2015, resource and exploration drilling commenced at the CBSZ with an initial 11-hole, ~2,500m diamond drilling program to in-fill gaps within the currently defined CBSZ structural corridor (Figure 2 and Appendix 3). Drilling has been completed and assays are awaited.

This is expected to pave the way for a maiden 43-101/JORC standard resource estimate for the CBSZ, with all data to be submitted to an independent resource consultant for construction of a wireframe model.

In addition to the in-fill drilling program, a further 48 shallow Reverse Circulation (RC) holes will be completed in the vicinity of the CBSZ (Figure 3). Results from this RC drilling program should provide further information on the potential for mineralisation within the Croteau Fault and its inferred association with the CBSZ, and to provide targets for future diamond drilling.

Eight RC drill holes will also test a prominent magnetic target, located on the north-eastern part of the property (Figure 4). RC drilling is expected to be completed in late July 2015.

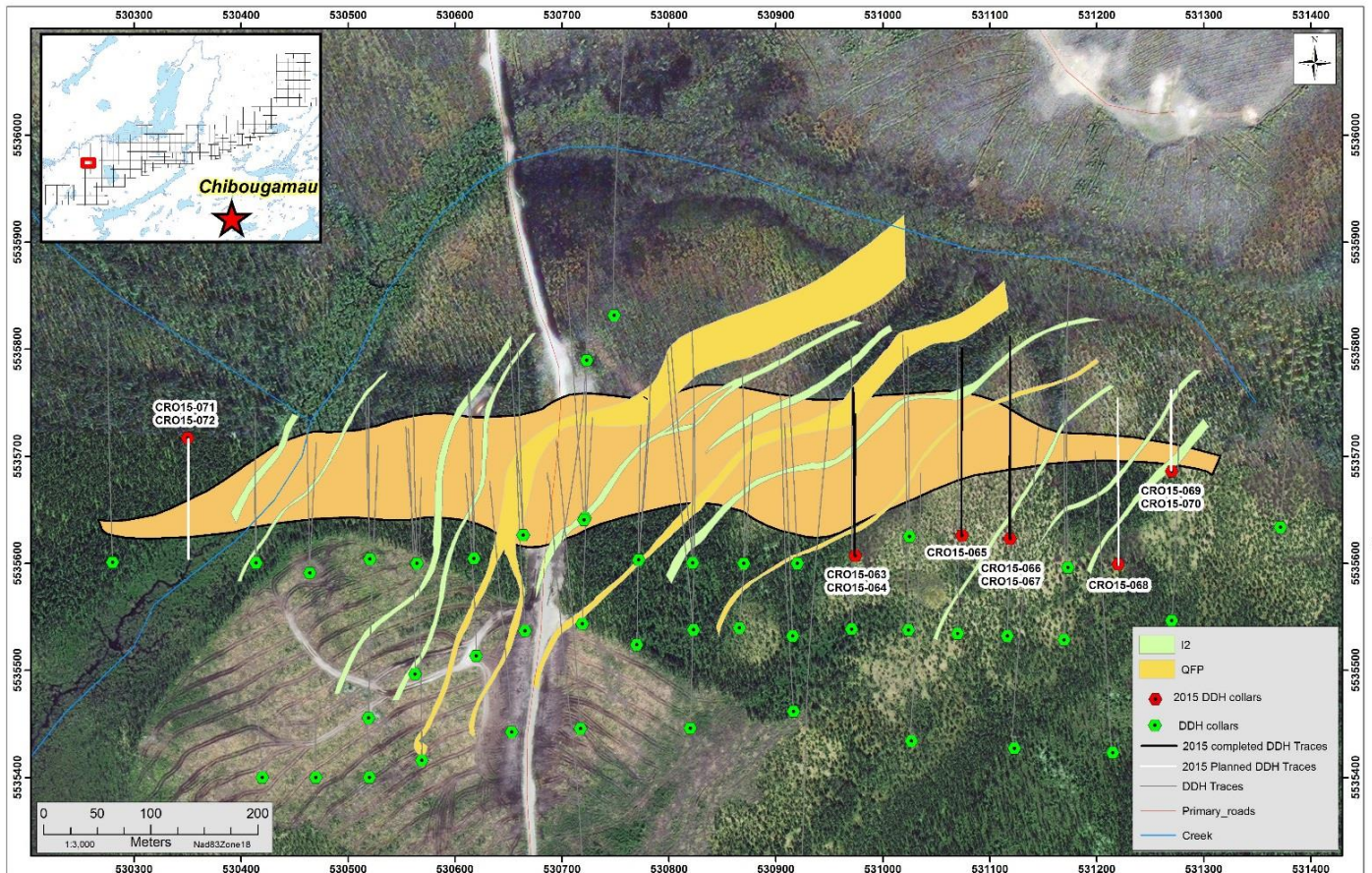


Figure 2: Location of planned drill collars (red collars) within the Croteau Bouchard Shear Zone (CBSZ)



Image 1: Sheared intermediate volcanic and mafic unit with quartz veining and strong carbonate alteration, overlying CBSZ mineralisation

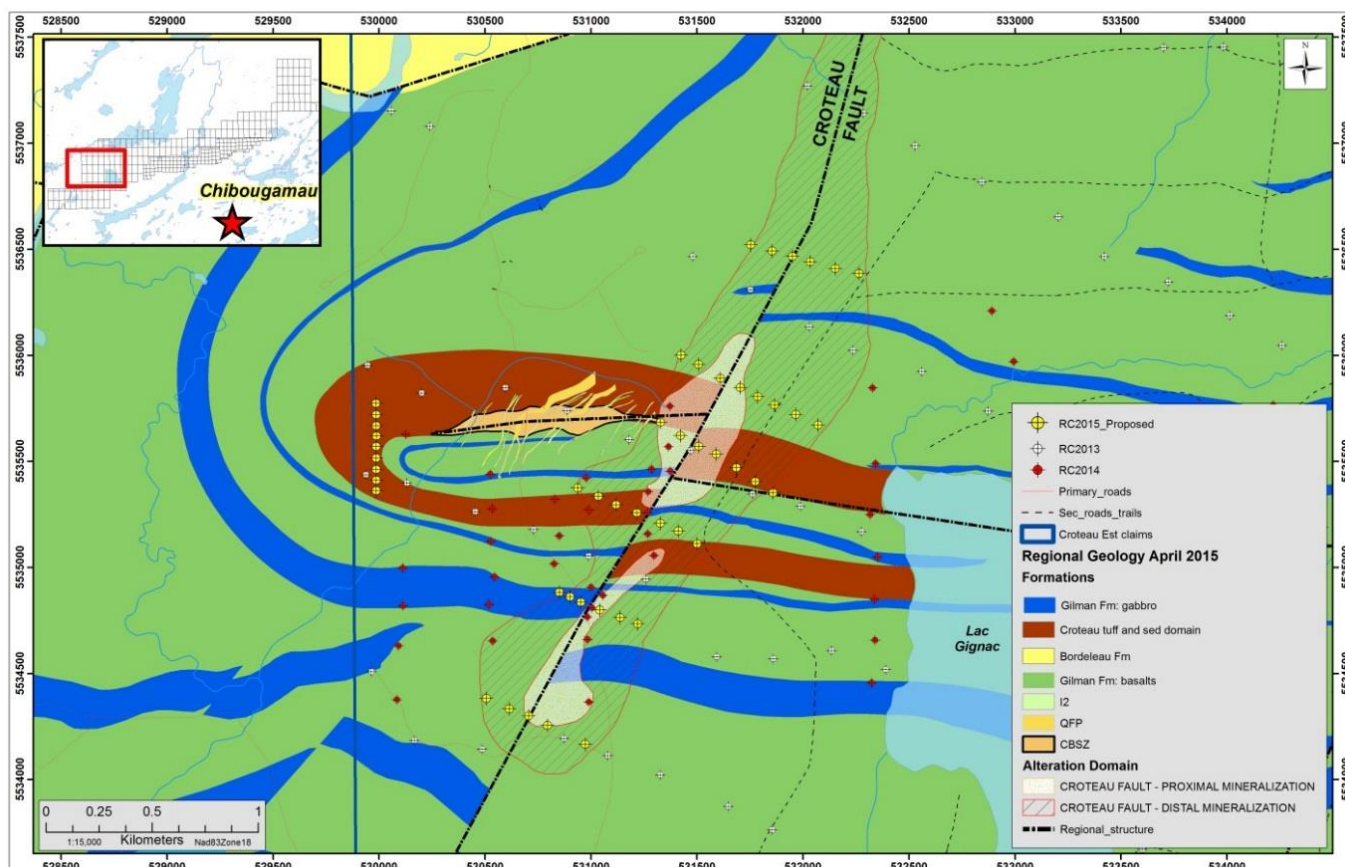


Figure 3: Location of planned reverse circulation drill collars (yellow collars)

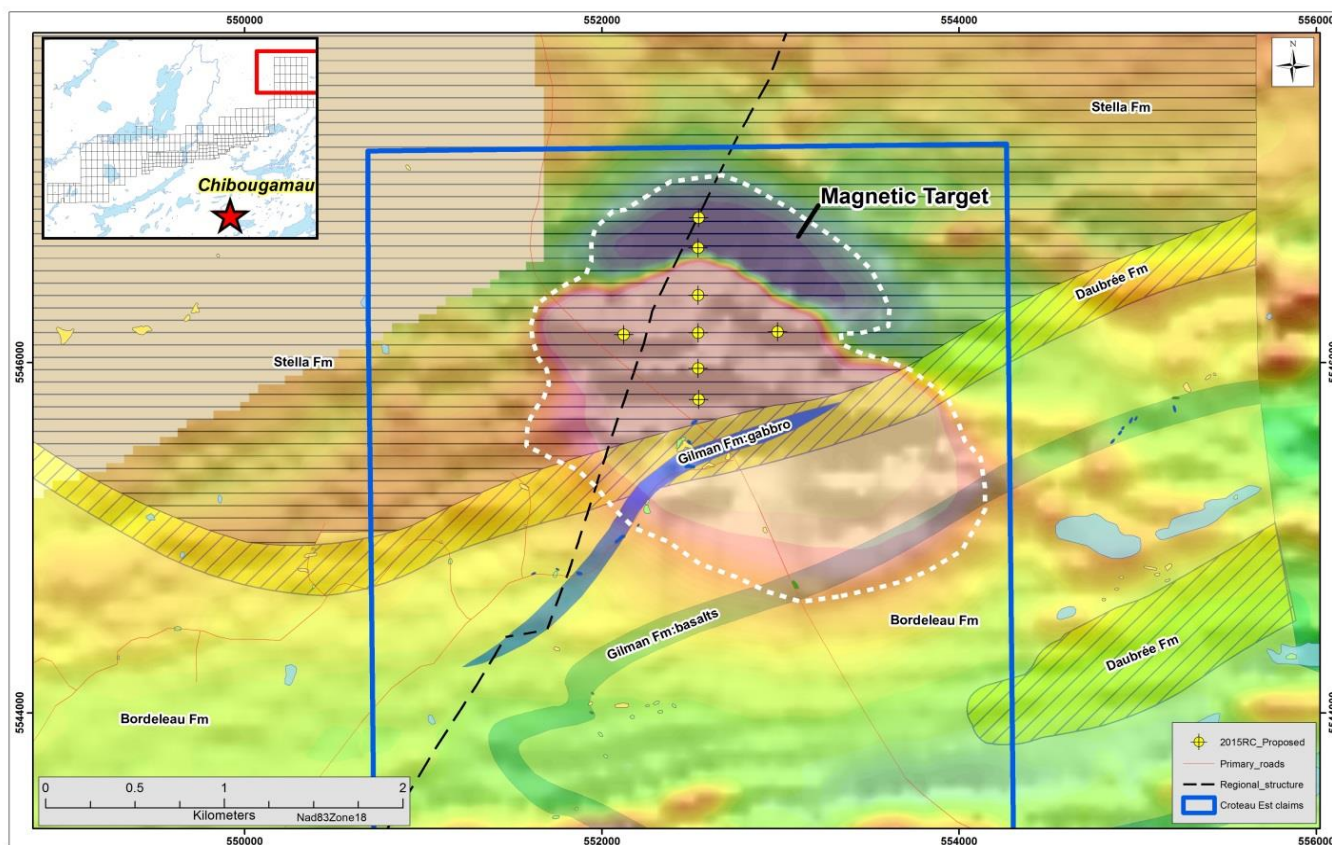


Figure 4: Location of planned Reverse Circulation drill holes to test a prominent magnetic target, located on the north-eastern part of the property

3. Tenement schedules

In accordance with ASX Listing Rule 5.3, please refer to Appendix 4 for listing of tenements.

4. Discussion on Quarterly Cash flow

Chalice's cash reserves were A\$39.9 million as at 30 June 2015.

During the Quarter, the Company spent \$0.8 million (YTD: \$2.8 million) on exploration and evaluation activities, \$0.2 million (YTD: \$2.2 million) on administration and overhead costs (which includes \$0.5 million in redundancy and termination payments) and \$0.3 million (YTD: \$1.5 million) on business development activities.

The impact of foreign exchange rates on the Company's USD cash balances was a favourable movement of \$0.2 million for the Quarter (YTD: \$4.9 million).

Further details are available in the attached Appendix 5B.



TIM GOYDER
Managing Director
20 July 2015

For further information, please contact:

Richard Hacker, CFO
Chalice Gold Mines Limited
Telephone +61 9322 3960

For media inquiries, please contact:

Nicholas Read
Read Corporate
Telephone: +618 9388 1474

Component Person and Qualifying Person Statements

The information in this report that relates to **Exploration Results in relation to the Cameron Gold Project and the Croteau Est Project** is based on information compiled by Mr Gary Snow, who is a Fellow of the Australasian Institute of Mining and Metallurgy and is a Fellow of the Australian Institute of Geoscientists. Mr Snow is a full-time employee of the company and has sufficient experience in the field of activity being reported to qualify as a Competent Person as defined in the 2012 edition of the Australasian Code for Reporting of Exploration Results, Minerals Resources and Ore Reserves, and is a Qualified Person under National Instrument 43-101 – ‘Standards of Disclosure for Mineral Projects’. The Qualified Person has verified the data disclosed in this release, including sampling, analytical and test data underlying the information contained in this release. Mr Snow consents to the release of information in the form and context in which it appears here.

The information relating to the **Cameron Gold Project Mineral Resource** is extracted from the ASX Announcement entitled “Chalice Files Updated 43-101 Technical Report” released on 29 July 2014 and is available to view at www.chalicegold.com. The company confirms that it is not aware of any new information or data that materially affects the information included in the original market announcement and, in the case of estimates of Mineral Resources, that all material assumptions and technical parameters underpinning the estimates in the relevant market announcement continue to apply and have not materially changed. The Company confirms that the form and context in which the Competent Person’s findings are presented have not materially modified from the original market announcement.

The information relating to the **Croteau Est Project** is extracted from the ASX Announcement entitled “Chalice expands North American presence with farm-in deal on advanced and highly prospective Canadian gold project” released on 22 April 2015 and is available to view at www.chalicegold.com. The company confirms that it is not aware of any new information or data that materially affects the information included in the original market announcement and, in the case of estimates of Mineral Resources that all material assumptions and technical parameters underpinning the estimates in the relevant market announcement continue to apply and have not materially changed. The Company confirms that the form and context in which the Competent Person’s findings are presented have not materially modified from the original market announcement.

Forward Looking Statements

This document may contain forward-looking information within the meaning of Canadian securities legislation and forward-looking statements within the meaning of the United States Private Securities Litigation Reform Act of 1995 (collectively, “forward-looking statements”). These forward-looking statements are made as of the date of this document and Chalice Gold Mines Limited (the Company) does not intend, and does not assume any obligation, to update these forward-looking statements, except as required by law or regulation.

Forward-looking statements relate to future events or future performance and reflect Company management’s expectations or beliefs regarding future events and include, but are not limited to, statements regarding the quantum and price of shares to be acquired under a share buyback, the estimation of mineral reserves and mineral resources, the realisation of mineral reserve estimates, the likelihood of exploration success, the timing and amount of estimated future production, costs of production, capital expenditures, success of mining operations, environmental risks, unanticipated reclamation expenses, title disputes or claims and limitations on insurance coverage.

In certain cases, forward-looking statements can be identified by the use of words such as plans, expects or does not expect, is expected, budget, scheduled, estimates, forecasts, intends, anticipates or does not anticipate, or believes, or variations of such words and phrases or statements that certain actions, events or results may, could, would, might or will be taken, occur or be achieved or the negative of these terms or comparable terminology. By their very nature forward-looking statements involve known and unknown risks, uncertainties and other factors which may cause the actual results, performance or achievements of the Company to be materially different from any future results, performance or achievements expressed or implied by the forward-looking statements. Such factors include, among others; risks related to actual results of current exploration activities; changes in project parameters as plans continue to be refined; future prices of mineral resources; possible variations in ore reserves, grade or recovery rates; accidents, labour disputes and other risks of the mining industry, as well as those factors detailed from time to time in the Company’s interim and annual financial statements, all of which are filed and available for review on SEDAR at sedar.com. Although the Company has attempted to identify important factors that could cause actual actions, events or results to differ materially from those described in forward-looking statements, there may be other factors that cause actions, events or results not to be as anticipated, estimated or intended. There can be no assurance that forward-looking statements will prove to be accurate, as actual results and future events could differ materially from those anticipated in such statements.

Accordingly, readers should not place undue reliance on forward-looking statements.

Appendix 1 - Cameron Gold Project Resource

Deposit	Description	Cut-off Gold g/t	Class	Tonnes	Gold g/t	Gold Oz
Cameron	Open Cut	0.5g/t	Measured	2,872,000	2.3	212,400
	RL>=750m		Indicated	5,417,000	1.76	306,600
			Meas+Indic	8,289,000	1.95	519,700
			Inferred	881,000	2.07	58,600
	Underground	1.75g/t	Measured	157,000	2.77	14,000
	RL<750m		Indicated	559,000	3.23	58,100
			Meas+Indic	716,000	3.13	72,100
			Inferred	5,709,000	2.78	510,300
Dubenski	Open Cut	1.00g/t	Measured			
	RL>=180m		Indicated	806,000	2.28	59,100
			Meas+Indic	806,000	2.28	59,100
			Inferred	392,000	1.44	18,200
Dogpaw	Open Cut	0.5g/t	Measured			
	RL>=210m		Indicated	247,000	3.02	24,000
			Meas+Indic	247,000	3.02	24,000
			Inferred	64,000	2.26	4,700
Total			Measured	3,029,000	2.33	226,900
			Indicated	7,029,000	1.98	447,500
			Meas+Indic	10,058,000	2.09	675,900
			Inferred	7,046,000	2.61	591,300

Appendix 2: Croteau Est - drill table statistics CBSZ

Hole ID	Easting	Northing	Elevation	Coordinate System	Azimuth	Dip	EOH (m)	From (m)	To (m)	Length (m)	Au (g/t)
CRO11_01	530721.5	5535642.4	373.2	UTM NAD83-Z18	1.7	-45.23	300	10.2	11.2	1	1.44
								19.9	21.9	2	1.84
								29.6	29.9	0.3	4.15
								41.1	45.5	4.4	2.17
								75.5	76.5	1	1.58
								109.8	110.4	0.6	1.71
								114.4	115.4	1	0.56
CRO11_02	530720.5	5535640.4	373.5	UTM NAD83-Z18	0	-60	396	8	9	1	1.03
								24.6	25.2	0.6	0.62
								29.25	30	0.75	0.65
								29.25	31.25	2	0.54
								30.75	31.25	0.5	0.53
								44.75	48.13	3.38	1.13
								52.5	53.5	1	0.67
								54.6	55.3	0.7	0.65
								63	65	2	2.06
								69.25	73.25	4	1.29
								90.3	97.5	7.2	1.43
								103.25	103.8	0.55	3.72
								135.7	139	3.3	0.74
								145	146	1	2.12
CRO11_03	530723.1	5535789.6	374.7	UTM NAD83-Z18	184.1	-43.77	309	82	83	1	0.63
								135	140	5	0.98
								145	148.25	3.25	0.50
								152	153	1	0.51
								163	164	1	0.87
								173	174	1	1.54
								176.35	177.5	1.15	3.09
								193.75	196.75	3	0.62
								199	204	5	1.26
								208.85	211	2.15	2.29
								214	219	5	0.73
CRO11_04	530748.8	5535831.6	371.2	UTM NAD83-Z18	360	-45	396	79	80.4	1.4	1.25
CRO11_05	530719.1	5535543.6	373	UTM NAD83-Z18	1.2	-60.19	351	155.35	156	0.65	0.51
								158.85	159.7	0.85	0.52
								170.15	177.5	7.35	10.24
								179.95	190.5	10.55	10.63
								181.75	187	5.25	20.56
								188.5	190.5	2	1.73
								196	197	1	0.88
								201	202	1	1.79
								214.5	215.25	0.75	1.07
								240.7	245.1	4.4	2.24
								254.2	255.6	1.4	0.69

Hole ID	Easting	Northing	Elevation	Coordinate System	Azimuth	Dip	EOH (m)	From (m)	To (m)	Length (m)	Au (g/t)
CRO11_06	530663.8	5535626.4	372.6	UTM NAD83-Z18	358.2	-45.6	237	286.8	287.5	0.7	0.71
								15.55	18	2.45	8.53
								28	38	10	2.88
								31.25	34	2.75	1.23
								35.1	36	0.9	0.70
								37.2	38	0.8	0.56
								42	42.75	0.75	0.81
								48.3	48.8	0.5	7.80
								54.8	55.6	0.8	0.92
								61.75	64.5	2.75	1.59
								71	81.15	10.15	1.34
								84	87.5	3.5	0.72
								118	119.05	1.05	1.88
								121.6	122.3	0.7	0.66
								125.65	126.3	0.65	0.69
								129	130	1	9.64
								143.3	144	0.7	2.46
								173.3	173.7	0.4	0.87
CRO11_07	530663.8	5535626.4	372.6	UTM NAD83-Z18	360	-45	27	12.25	14.7	2.45	1.18
								25	27	2	2.70
CRO11_08	530663.8	5535626.4	373.3	UTM NAD83-Z18	357.4	-60.36	303	18.5	19.1	0.6	0.61
								25	35	10	2.52
								47	51	4	1.47
								56	56.6	0.6	1.06
								78.4	79	0.6	1.64
								84	85.5	1.5	1.89
								94	96	2	1.71
								98.4	101.5	3.1	2.12
								104	104.8	0.8	3.42
								107.9	108.6	0.7	3.34
								117	119	2	2.05
								129	129.6	0.6	0.66
								131.95	132.4	0.45	6.87
								136	137	1	0.96
								139.7	141	1.3	0.75
								144	145	1	0.65
								154.55	155.2	0.65	8.16
								159.7	160.3	0.6	1.64
								163	163.7	0.7	0.82
CRO12_09	530617.8	5535604.4	372.5	UTM NAD83-Z18	358.7	-43.81	201	38	38.75	0.75	1.47
								39.2	39.5	0.3	1.17
								47.55	47.95	0.4	0.73
								66	67	1	0.72
								83	91.75	8.75	0.54
								110	111.7	1.7	1.78
								117	117.95	0.95	1.57

Hole ID	Easting	Northing	Elevati on	Coordinate System	Azimu th	Dip	EOH (m)	From (m)	To (m)	Length (m)	Au (g/t)
CRO12_10	530617.83	5535604.4	372.6	UTM NAD83-Z18	360	-58.62	278	130	131.15	1.15	3.85
								58	58.8	0.8	9.84
								77.4	81	3.6	1.65
								84.35	85	0.65	0.64
								90.75	110.3	19.55	8.55
								115.2	116	0.8	3.08
								133.55	134.3	0.75	0.72
CRO12_11	530564	5535600	371.6	UTM NAD83-Z18	355.1	-45.68	180	164	165	1	0.84
								74	76	2	1.30
								91	97.6	6.6	1.03
CRO12_12	530564.4	5535600	371.7	UTM NAD83-Z18	359.4	-59.66	267	100	108.3	8.3	2.10
								82	83	1	0.55
								86	87	1	0.95
								93.3	95	1.7	1.68
								102	103	1	1.40
								108	109	1	0.57
								112	119	7	1.88
								125	128	3	0.76
								131	132	1	1.60
								149	151	2	1.36
CRO12_13	530771.6	5535603.2	374.1	UTM NAD83-Z18	5	-45.26	201	178	179	1	0.99
								63.75	64.5	0.75	0.53
								81	82	1	0.71
								93	94	1	0.60
								106	107	1	2.85
CRO12_14	530771.6	5535603.2	374.1	UTM NAD83-Z18	4.2	-59.5	306	128	129	1	0.69
								111	113	2	0.67
								170.6	171.75	1.15	1.98
								194	194.55	0.55	1.61
								220	221	1	0.64
								227	228	1	0.74
CRO12_15	530822.1	5535600.4	371.6	UTM NAD83-Z18	359.4	-46.46	297	235.2	235.4	0.2	1.40
								274	275	1	2.06
								72	73	1	0.60
								76.8	78	1.2	2.63
								85.1	86	0.9	3.61
CRO12_16	530822.1	5535600.4	371.7	UTM NAD83-Z18	355.1	-60.43	330	96	97	1	0.54
								109	110	1	1.04
								10.4	10.9	0.5	2.14
								84.65	85.5	0.85	2.56
								120	122	2	1.19
								166	167	1	1.83
								190	191	1	0.86
								210	213	3	0.75

Hole ID	Easting	Northing	Elevation	Coordinate System	Azimuth	Dip	EOH (m)	From (m)	To (m)	Length (m)	Au (g/t)
CRO12_21	530520.5	5535604	370	UTM NAD83-Z18	360	-45	213	244.5	246.1	1.6	2.81
								285	286	1	0.57
								59.15	59.65	0.5	34.50
								67.4	68	0.6	1.82
								71	75	4	0.82
								85	87	2	0.73
								97.6	101.6	4	2.53
								104	105	1	2.25
CRO12_22	530520.5	5535604	370	UTM NAD83-Z18	360	-60	273	115.8	119	3.2	2.93
								128	131	3	2.29
								71	72.55	1.55	6.84
								75.6	76.3	0.7	0.66
								91	92	1	2.90
								97	105	8	1.14
								108.8	109.3	0.5	1.02
								115.8	117	1.2	0.65
CRO12_23	530464.32	5535591	370	UTM NAD83-Z18	360	-45	171	130	132	2	1.62
								56	60	4	1.11
								140.35	141	0.65	2.04
CRO12_24	530464.3	5535591	370	UTM NAD83-Z18	360	-60	252	141.5	142	0.5	4.02
								68	70	2	1.51
								79	79.8	0.8	1.08
								189	189.6	0.6	0.51
CRO12_25	530414	5535600.4	370	UTM NAD83-Z18	360	-45	177	192	192.55	0.55	1.07
								36	37	1	3.54
								143.75	144.5	0.75	5.07
								149	150.12	1.12	1.95
CRO12_26	530414	5535600.4	370	UTM NAD83-Z18	360	-60	252	112	112.7	0.7	1.04
								120	121	1	0.62
								175	176	1	1.61
								180	181.5	1.5	1.31
								199	200	1	0.75
CRO12_29	530665.6	5535536.8	370	UTM NAD83-Z18	357	-60	276	106	107	1	0.80
								117	118	1	0.87
								146	150	4	1.45
								153.6	154.2	0.6	3.59
								171.6	181.35	9.75	3.50
								189	190.5	1.5	3.53
								196.25	201	4.75	1.62
								205.7	206.2	0.5	0.75
								216	218.72	2.72	1.99
								226.7	230	3.3	0.75
								236	238.5	2.5	0.86
CRO12_30	530717.2	5535445.6	373	UTM NAD83-Z18	358.5	-62.81	477	203.6	204.4	0.8	4.72
								314	314.45	0.45	1.13
								333.45	335.5	2.05	1.42

Hole ID	Easting	Northing	Elevation	Coordinate System	Azimuth	Dip	EOH (m)	From (m)	To (m)	Length (m)	Au (g/t)
								338.75	343.75	5	0.71
								357	358	1	0.75
								361.35	362	0.65	1.15
								397	414	17	0.94
CRO12_31	530653	5535442.4	372.2	UTM NAD83-Z18	358.4	-66	426	197.1	198	0.9	0.68
								275.4	278.6	3.2	1.29
								280.75	281.4	0.65	0.64
								316.1	335.2	19.1	1.94
								353.6	356.95	3.35	0.82
								367.35	367.95	0.6	0.61
								370	372	2	1.78
								388.35	389.25	0.9	2.17
CRO12_32	530619.8	5535513.6	372.1	UTM NAD83-Z18	1.3	-66.5	336	68	70.5	2.5	0.84
								78.65	80	1.35	0.56
								231	234.4	3.4	1.49
								244	245	1	2.58
								253.65	256.6	2.95	4.54
								268.5	271.25	2.75	1.36
								278.95	279.5	0.55	4.46
								287	288	1	0.66
CRO12_33	530562.6	5535496.6	372.2	UTM NAD83-Z18	1.2	-55.95	345	204.75	206.2	1.45	0.87
								212	213	1	0.60
								267.25	270.35	3.1	3.84
CRO12_34	530823	5535538	371.8	UTM NAD83-Z18	357.9	-60.76	393	72	72.5	0.5	0.55
								156.4	156.7	0.3	5.55
								160.25	167.9	7.65	3.08
								171.85	177	5.15	1.16
								181	188.05	7.05	2.18
								191.3	196.25	4.95	0.59
								198.6	199.3	0.7	1.98
								222.5	233.15	10.65	2.88
								238.55	250.15	11.6	3.17
CRO12_35	530820	5535446	372.6	UTM NAD83-Z18	3	-60	441	33	34	1	0.64
								282.25	284.7	2.45	0.90
								287.75	288.3	0.55	0.69
								294	299	5	0.73
								331	331.55	0.55	0.50
								353	353.4	0.4	49.40
								359	360	1	0.59
								367	370	3	1.36
CRO12_36	530717.8	5535259	372.7	UTM NAD83-Z18	5.2	-67.38	657	141.4	142.4	1	0.76
								281.75	282.5	0.75	0.69
								286.8	287.25	0.45	0.71
								517.6	519	1.4	0.63
								528.95	530.25	1.3	1.40

Hole ID	Easting	Northing	Elevation	Coordinate System	Azimuth	Dip	EOH (m)	From (m)	To (m)	Length (m)	Au (g/t)
								533	535.25	2.25	0.79
								540.25	542.25	2	4.47
								545.4	549.75	4.35	2.96
								558	566	8	1.51
								570	570.75	0.75	0.78
								582.75	586.25	3.5	0.95
CRO12_37	530770	5535524	377	UTM NAD83-Z18	1	-61	362.4	201.8	202.25	0.45	0.64
								211	213	2	0.65
								215.25	215.65	0.4	1.12
								216.5	217.15	0.65	1.06
								224	225	1	0.55
								227	228	1	0.84
								230.9	231.35	0.45	0.89
								262	270.75	8.75	1.36
CRO12_38	530866	5535539.6	378.4	UTM NAD83-Z18	4.3	-58.28	339.8	300	301	1	0.95
								139.7	140.55	0.85	2.91
								151	152	1	0.80
								162	164.2	2.2	0.62
								167	167.6	0.6	0.93
								171	172	1	0.65
								186	187.25	1.25	1.85
								194	195	1	4.20
								206	214.8	8.8	2.74
								220	231	11	1.19
CRO12_39	530569	5535416	373.8	UTM NAD83-Z18	358.8	-58.43	406	236	243	7	0.72
								285.6	286.3	0.7	0.63
								43.37	43.72	0.35	23.50
								277	278	1	0.57
CRO12_41	530915.6	5535532	376.3	UTM NAD83-Z18	358.6	-58.19	346	359.43	361.7	2.27	1.57
								153.35	155.2	1.85	28.04
								170.35	180	9.65	1.78
								185.7	199.5	13.8	0.93
								207.45	220	12.55	2.29
								223.5	227	3.5	1.66
								232	235.2	3.2	0.93
								240	246	6	0.94
								249	250.2	1.2	1.77
								253	259	6	0.86
								263.7	264.45	0.75	0.54
								268.65	270.65	2	1.96
								273	273.5	0.5	0.74
								275.5	276.1	0.6	1.47
								284	287	3	0.77
CRO12_42	530519.3	5535455.6	373.1	UTM NAD83-Z18	0.4	-59.71	400	301.5	305.75	4.25	1.09
								258	260	2	0.90
								276.45	278.2	1.75	6.53

Hole ID	Easting	Northing	Elevation	Coordinate System	Azimuth	Dip	EOH (m)	From (m)	To (m)	Length (m)	Au (g/t)
								305.32	307.63	2.31	2.28
								358	358.5	0.5	1.06
								361	362	1	1.95
CRO12_43	530970.9	5535538.4	372.5	UTM NAD83-Z18	1.5	-60.13	444	175.55	178.55	3	0.86
								200.7	205.7	5	1.87
								209.7	211.7	2	1.73
								216.9	221.4	4.5	0.76
								226.4	227.2	0.8	0.59
								246.85	247.36	0.51	1.82
								327.5	328.5	1	0.55
								332.2	338.7	6.5	0.61
CRO12_44	530519.3	5535455.6	373.1	UTM NAD83-Z18	0.9	-45.68	340	222.3	222.73	0.43	0.64
								223.7	224.7	1	0.53
								231.5	233.5	2	2.03
								304	306.38	2.38	1.11
CRO12_45	530916.5	5535461.6	373.8	UTM NAD83-Z18	356.6	-56.84	512	262	267.4	5.4	1.38
								293	294.07	1.07	0.71
								298	299	1	2.85
								303	304	1	0.69
								318	319	1	1.81
								354	355	1	4.13
								400.88	401.88	1	0.65
								426	427.8	1.8	1.86
CRO12_46	531023.8	5535537.6	374.2	UTM NAD83-Z18	0.4	-59.51	478.2	152	155	3	1.52
								165.5	166	0.5	0.52
								168.7	172	3.3	0.87
								216.9	217.75	0.85	3.34
								221.57	226.8	5.23	1.23
								228.9	229.55	0.65	4.51
								240.65	247.5	6.85	21.32
								252.35	253.55	1.2	1.05
								274	275	1	1.17
								283.9	291	7.1	2.15
								294	295	1	1.50
								299.75	301	1.25	1.03
								305.5	306.5	1	1.00
								310	317	7	0.57
								339	340	1	1.37
								343.5	344.5	1	0.54
								351.5	352.1	0.6	1.04
								457.3	458	0.7	0.58
CRO12_47	531026.8	5535434	375.4	UTM NAD83-Z18	2.8	-58.02	436	331	334	3	2.14
								348.2	349	0.8	2.45
								359.26	360.18	0.92	0.80
CRO12_48	531069.8	5535534.4	374.3	UTM NAD83-Z18	3.1	-57.5	421	153.3	153.7	0.4	1.44
								157	159	2	1.46

Hole ID	Easting	Northing	Elevation	Coordinate System	Azimuth	Dip	EOH (m)	From (m)	To (m)	Length (m)	Au (g/t)
								161.1	162	0.9	1.92
								165.8	168.35	2.55	1.44
								170.75	171.8	1.05	3.90
								245	247	2	1.79
								265.7	266.7	1	3.91
								274.5	275.1	0.6	0.62
								284.6	285.4	0.8	2.06
								291.9	292.9	1	2.39
								297.6	298.6	1	0.59
								363.25	364	0.75	1.24
CRO12_49	531116.4	5535532	377	UTM NAD83-Z18	0.6	-58.46	433	205.4	206.1	0.7	0.92
								270.4	273	2.6	9.49
								283.5	284	0.5	3.05
								288	288.6	0.6	0.66
								294	294.65	0.65	0.74
								298	299	1	0.71
								304.6	305.1	0.5	0.53
								307	307.75	0.75	0.85
								313.35	314	0.65	10.55
								334	334.8	0.8	0.57
CRO12_50	531122.9	5535427.2	378.7	UTM NAD83-Z18	4.7	-58.27	523	343.8	345.15	1.35	1.46
								355.4	356	0.6	1.10
								357.5	358	0.5	0.91
								487.6	487.9	0.3	2.12
								494.2	497.2	3	2.61
CRO12_51	531169.3	5535528.4	374.8	UTM NAD83-Z18	359.7	-56.68	421	319	323	4	1.32
								330	336	6	0.69
								361	364.65	3.65	0.89
								370.75	371.3	0.55	0.60
								375.9	382	6.1	0.62
								384.15	386	1.85	0.75
CRO12_53	531270.1	5535546.6	377.8	UTM NAD83-Z18	2.7	-51.67	387	312.8	313.2	0.4	1.38
CRO12_54	530924	5535261.6	375.2	UTM NAD83-Z18	5.7	-65.84	793	526.8	527.8	1	0.62
								531.8	532.2	0.4	0.74
								537.2	540.9	3.7	2.74
								551.5	554.5	3	0.91
								589.6	589.9	0.3	1.07
								598.9	600	1.1	1.51
								621.7	622	0.3	0.72
								657	665	8	0.60
								672.4	673.2	0.8	0.93
								674.4	675.4	1	0.50
								679.7	685	5.3	4.19
								730.6	733.2	2.6	8.71
CRO12_55	531371.5	5535633.6	372.6	UTM NAD83-Z18	4.2	-51.8	475	106.65	107.25	0.6	5.76
CRO13_56	530870	5535600	370	UTM NAD83-Z18	360	-51	249.7	28.5	29.4	0.9	8.25

Hole ID	Easting	Northing	Elevation	Coordinate System	Azimuth	Dip	EOH (m)	From (m)	To (m)	Length (m)	Au (g/t)
								38	38.55	0.55	0.82
								43.65	44.55	0.9	0.57
								52.1	53.7	1.6	0.54
								57.5	58.25	0.75	0.94
								92	93	1	1.18
								126.5	128.7	2.2	2.34
								142.65	143.55	0.9	0.61
								213.7	214.7	1	0.98
CRO13_57	530920	5535600	370	UTM NAD83-Z18	360	-51	262	79.2	85	5.8	0.75
								88.5	91.6	3.1	0.82
								123	124	1	2.19
								131	131.5	0.5	1.22
								134	135	1	0.52
								154	155	1	3.36
								160	160.9	0.9	0.54
								165	168	3	0.90
								173	173.7	0.7	1.72
								227.8	228.3	0.5	1.20
								250	251	1	0.85
								255	256	1	5.32
CRO13_58	531025	5535625	370	UTM NAD83-Z18	360	-51	250	29	29.5	0.5	1.02
								32.1	36	3.9	0.64
								39	40	1	0.53
								43.35	44	0.65	0.83
								51.8	52.85	1.05	2.31
								57.75	61	3.25	0.78
								111	112.3	1.3	2.27
								122	124.55	2.55	0.54
								131	131.75	0.75	0.52
								139.9	141.25	1.35	1.62
								216.7	217.8	1.1	0.91
CRO13_60	530520	5535400	370	UTM NAD83-Z18	360	-45	75	67	68	1	0.58
CRO13_61	530470	5535400	370	UTM NAD83-Z18	360	-45	84	25.2	26	0.8	2.77
CRO13_62	530420	5535400	370	UTM NAD83-Z18	360	-45	102	27.8	29.4	1.6	0.57
								33.8	34.4	0.6	0.64
								38	38.55	0.55	5.63

Appendix 3 – 2015 DDH program - drill hole coordinates at CBSZ (Croteau Est)

Drillhole Section	Drillhole	Collar Location (NAD-83)		Drillhole Azimuth	Drillhole Inclination	Start Date	End Date	Final Depth (m)	Split Core Samples
		Easting	Northing						
530970E	CRO15-63	530974	5535607	359°	-45°	Jun-10	Jun-13	222.0	165
	CRO15-64	530974	5535607	360°	-65°	Jun-13	Jun-16	312.6	209
531070E	CRO15-65	531074	5535626	001°	-50°	Jun-16	Jun-18	273.0	154
531120E	CRO15-66	531119	5535623	360°	-45°	Jun-18	Jun-20	267.0	101
	CRO15-67	531119	5535623	360°	-60°	Jun-20	Jun-22	276.0	166
531220E	CRO15-68	531220	5535599	360°	-45°	Jun-22	Jun-24	198.0	99
531270E	CRO15-69	531270	5535686	360°	-45°	Jun-24	Jun-25	141.0	
	CRO15-72	531270	5535686	360°	-60°	Jun-29	Jun-30	111.0	54
	CRO15-73	531270	5535686	360°	-72°	Jun-30	Jul-02	213.0	168
530350E	CRO15-70	530350	5535717	180°	-45°	Jun-25	Jun-27	219.0	102
	CRO15-71	530350	5535717	180°	-60°	Jun-27	Jun-29	279.0	131
							Σ	2,511.6	1349

Appendix 4 – Tenement schedules

The following information is provided in accordance with ASX Listing Rule 5.3 for the quarter ended 30 June 2015:

1. Listing of tenements held:

Location	Project	Tenement No.	Registered Holder	Nature of interest
Australia	Gnaweeda	E51/0926	Chalice Gold Mines Limited and Teck Australia Pty Ltd	12.03%
		E51/0927	Chalice Gold Mines Limited and Teck Australia Pty Ltd	12.03%
Canada	Refer appendix 5.			

2. Listing of tenements acquired (directly or beneficially) during the quarter:

Location	Project	Tenement No.	Registered Holder	Nature of Interest
Canada	Refer appendix 6.			

3. Tenements relinquished, reduced or lapsed (directly or beneficially) during the quarter:

Location	Project	Tenement Type	Tenement No.	Registered Holder	Nature of Interest
Canada	Rainy River	Claim	4250316	Coventry Rainy River Inc.	owned

Appendix 5 - Tenements held (Canada)

Project	Tenement Type	Patent, PIN Number	Claim Number	Registered Holder	Percentage Ownership
Cameron	Mining Lease	108400	CLM305. Claim K465069-K465075, K465351-K465358, K519950-K519965, K561022-K561025, K666295	Cameron Gold Operations Ltd	100%
Cameron	Mining Lease	108400	CLM306, Claim K386816-K386818, K386888-K386900, K533901-K533908, K666294	Cameron Gold Operations Ltd	100%
West Cedar	Mining Lease	107495	K314926, K351875-K351876, K314928-K314931, K273821	Cameron Gold Operations Ltd	100%
Cameron	Patented mining claim	PA8441, 42185-0720 (LT)	K2766	Cameron Gold Operations Ltd	100%
Cameron	Patented mining claim	PA8442, 42185-0722 (LT)	K2767	Cameron Gold Operations Ltd	100%
Cameron	Patented mining claim	PA8443, 42185-0724 (LT)	K2768	Cameron Gold Operations Ltd	100%
Cameron	Patented mining claim	PA9901, 42185-0726 (LT)	K4712	Cameron Gold Operations Ltd	100%
West Cedar	Patented mining claim	42185-0208 (LT)	K9990	Cameron Gold Operations Ltd	100%
West Cedar	Patented mining claim	42185-0586 (LT)	K9991	Cameron Gold Operations Ltd	100%
West Cedar	Patented mining claim	42185-0585 (LT)	K9992	Cameron Gold Operations Ltd	100%
West Cedar	Patented mining claim	42185-0577 (LT)	K9993	Cameron Gold Operations Ltd	100%
West Cedar	Patented mining claim	42185-0587 (LT)	K9994	Cameron Gold Operations Ltd	100%
West Cedar	Patented mining claim	42185-0578 (LT)	K9995	Cameron Gold Operations Ltd	100%
West Cedar	Patented mining claim	42185-0588 (LT)	K9996	Cameron Gold Operations Ltd	100%
West Cedar	Patented mining claim	42185-0579 (LT)	K9997	Cameron Gold Operations Ltd	100%
West Cedar	Patented mining claim	42185-0581 (LT)	K9999	Cameron Gold Operations Ltd	100%
West Cedar	Patented mining claim	42185-0807 (LT)	K10000	Cameron Gold Operations Ltd	100%
West Cedar	Patented mining claim	42185-0583 (LT)	K10010	Cameron Gold Operations Ltd	100%
West Cedar	Patented mining claim	42185-0584 (LT)	K10011	Cameron Gold Operations Ltd	100%
West Cedar	Patented mining claim	42185-0580 (LT)	K10058	Cameron Gold Operations Ltd	100%
West Cedar	Patented mining claim	42185-0796 (LT)	K10024	Cameron Gold Operations Ltd	100%
West Cedar	Patented mining claim	42185-0799 (LT)	K10025	Cameron Gold Operations Ltd	100%
West Cedar	Patented mining claim	42185-0801 (LT)	K10026	Cameron Gold Operations Ltd	100%
West Cedar	Patented mining claim	42185-0803 (LT)	K10027	Cameron Gold Operations Ltd	100%
West Cedar	Patented mining claim	42185-0593 (LT)	K10028	Cameron Gold Operations Ltd	100%
West Cedar	Patented mining claim	42185-0594 (LT)	K10029	Cameron Gold Operations Ltd	100%
West Cedar	Patented mining claim	42185-0595 (LT)	K10030	Cameron Gold Operations Ltd	100%
Cameron	MLO	10384	K4709	Cameron Gold Operations Ltd	100%
Cameron	MLO	10405	K4711	Cameron Gold Operations Ltd	100%
Cameron	MLO	10406	K4710	Cameron Gold Operations Ltd	100%

Project	Tenement Type	Patent, PIN Number	Claim Number	Registered Holder	Percentage Ownership
Cameron	MLO	10407	K4712	Cameron Gold Operations Ltd	100%
Cameron	MLO	3366	K2767	Cameron Gold Operations Ltd	100%
Cameron	MLO	3367	K2768	Cameron Gold Operations Ltd	100%
West Cedar	MLO	11143	K9990, K9992, K9993, K9996, K9999, K10000, K10011, K10058	Cameron Gold Operations Ltd	100%
Cameron	Claim		1105444	Cameron Gold Operations Ltd	100%
Cameron	Claim		1105445	Cameron Gold Operations Ltd	100%
Cameron	Claim		1161574	Cameron Gold Operations Ltd	100%
Cameron	Claim		1161575	Cameron Gold Operations Ltd	100%
Cameron	Claim		1210120	Cameron Gold Operations Ltd	100%
Cameron	Claim		1210121	Cameron Gold Operations Ltd	100%
Cameron	Claim		1210122	Cameron Gold Operations Ltd	100%
Cameron	Claim		1210123	Cameron Gold Operations Ltd	100%
Cameron	Claim		1210124	Cameron Gold Operations Ltd	100%
Cameron	Claim		1210125	Cameron Gold Operations Ltd	100%
Cameron	Claim		1210126	Cameron Gold Operations Ltd	100%
Cameron	Claim		1210128	Cameron Gold Operations Ltd	100%
Cameron	Claim		1210129	Cameron Gold Operations Ltd	100%
Cameron	Claim		1210130	Cameron Gold Operations Ltd	100%
Cameron	Claim		1210131	Cameron Gold Operations Ltd	100%
Cameron	Claim		1210132	Cameron Gold Operations Ltd	100%
Cameron	Claim		1210133	Cameron Gold Operations Ltd	100%
Cameron	Claim		1210134	Cameron Gold Operations Ltd	100%
Cameron	Claim		1210135	Cameron Gold Operations Ltd	100%
Cameron	Claim		1210136	Cameron Gold Operations Ltd	100%
Cameron	Claim		4254297	Cameron Gold Operations Ltd	100%
Cameron	Claim		4258281	Cameron Gold Operations Ltd	100%
Cameron	Claim		4258282	Cameron Gold Operations Ltd	100%
Cameron	Claim		4258283	Cameron Gold Operations Ltd	100%
Cameron	Claim		4258284	Cameron Gold Operations Ltd	100%
Cameron	Claim		4258285	Cameron Gold Operations Ltd	100%
Cameron	Claim		4258286	Cameron Gold Operations Ltd	100%
Cameron	Claim		4258287	Cameron Gold Operations Ltd	100%
Cameron	Claim		4258288	Cameron Gold Operations Ltd	100%

Project	Tenement Type	Patent, PIN Number	Claim Number	Registered Holder	Percentage Ownership
Cameron	Claim		4258289	Cameron Gold Operations Ltd	100%
Cameron	Claim		4258290	Cameron Gold Operations Ltd	100%
Cameron	Claim		4258291	Cameron Gold Operations Ltd	100%
Cameron	Claim		4258292	Cameron Gold Operations Ltd	100%
Cameron	Claim		4258421	Cameron Gold Operations Ltd	100%
Cameron	Claim		4258422	Cameron Gold Operations Ltd	100%
Cameron	Claim		4258423	Cameron Gold Operations Ltd	100%
Cameron	Claim		4258424	Cameron Gold Operations Ltd	100%
Cameron	Claim		4258425	Cameron Gold Operations Ltd	100%
Cameron	Claim		4258426	Cameron Gold Operations Ltd	100%
Cameron	Claim		4258427	Cameron Gold Operations Ltd	100%
Cameron	Claim		4258428	Cameron Gold Operations Ltd	100%
Cameron	Claim		4258429	Cameron Gold Operations Ltd	100%
Cameron	Claim		4258430	Cameron Gold Operations Ltd	100%
Cameron	Claim		4258431	Cameron Gold Operations Ltd	100%
Cameron	Claim		4258432	Cameron Gold Operations Ltd	100%
Cameron	Claim		4258433	Cameron Gold Operations Ltd	100%
Cameron	Claim		4258434	Cameron Gold Operations Ltd	100%
Cameron	Claim		4258435	Cameron Gold Operations Ltd	100%
Cameron	Claim		4258436	Cameron Gold Operations Ltd	100%
Cameron	Claim		4258437	Cameron Gold Operations Ltd	100%
Cameron	Claim		4258438	Cameron Gold Operations Ltd	100%
Cameron	Claim		4258439	Cameron Gold Operations Ltd	100%
Cameron	Claim		4258440	Cameron Gold Operations Ltd	100%
Cameron	Claim		4258441	Cameron Gold Operations Ltd	100%
Cameron	Claim		4258442	Cameron Gold Operations Ltd	100%
Cameron	Claim		4258443	Cameron Gold Operations Ltd	100%
Cameron	Claim		4258444	Cameron Gold Operations Ltd	100%
Cameron	Claim		4258445	Cameron Gold Operations Ltd	100%
Cameron	Claim		4258446	Cameron Gold Operations Ltd	100%
Cameron	Claim		4258447	Cameron Gold Operations Ltd	100%
Cameron	Claim		4258448	Cameron Gold Operations Ltd	100%
Cameron	Claim		4258449	Cameron Gold Operations Ltd	100%

Project	Tenement Type	Patent, PIN Number	Claim Number	Registered Holder	Percentage Ownership
Cameron	Claim		4258450	Cameron Gold Operations Ltd	100%
Cameron	Claim		4257392	Cameron Gold Operations Ltd	100%
Cameron	Claim		4255667	Cameron Gold Operations Ltd	100%
Cameron	Claim		4255668	Cameron Gold Operations Ltd	100%
Cameron	Claim		4255669	Cameron Gold Operations Ltd	100%
Cameron	Claim		4283921	Cameron Gold Operations Ltd	100%
Cameron	Claim		4283922	Cameron Gold Operations Ltd	100%
Cameron	Claim		4283923	Cameron Gold Operations Ltd	100%
Cameron	Claim		4283924	Cameron Gold Operations Ltd	100%
Cameron	Claim		4283925	Cameron Gold Operations Ltd	100%
Cameron	Claim		4283926	Cameron Gold Operations Ltd	100%
Cameron	Claim		4283927	Cameron Gold Operations Ltd	100%
Cameron	Claim		4283928	Cameron Gold Operations Ltd	100%
Cameron	Claim		4283929	Cameron Gold Operations Ltd	100%
Cameron	Claim		4283930	Cameron Gold Operations Ltd	100%
Cameron	Claim		4283931	Cameron Gold Operations Ltd	100%
Cameron	Claim		4283932	Cameron Gold Operations Ltd	100%
Cameron	Claim		4283933	Cameron Gold Operations Ltd	100%
Cameron	Claim		4283934	Cameron Gold Operations Ltd	100%
Cameron	Claim		4283935	Cameron Gold Operations Ltd	100%
Cameron	Claim		4283936	Cameron Gold Operations Ltd	100%
Cameron	Claim		4283937	Cameron Gold Operations Ltd	100%
Cameron	Claim		4283938	Cameron Gold Operations Ltd	100%
Cameron	Claim		4283939	Cameron Gold Operations Ltd	100%
Cameron	Claim		4283940	Cameron Gold Operations Ltd	100%
Cameron	Claim		4283941	Cameron Gold Operations Ltd	100%
Cameron	Claim		4283942	Cameron Gold Operations Ltd	100%
Cameron	Claim		4283943	Cameron Gold Operations Ltd	100%
Cameron	Claim		4283944	Cameron Gold Operations Ltd	100%
Cameron	Claim		4283945	Cameron Gold Operations Ltd	100%
Cameron	Claim		4283946	Cameron Gold Operations Ltd	100%
Cameron	Claim		4283947	Cameron Gold Operations Ltd	100%
Cameron	Claim		4283948	Cameron Gold Operations Ltd	100%

Project	Tenement Type	Patent, PIN Number	Claim Number	Registered Holder	Percentage Ownership
Cameron	Claim		4283949	Cameron Gold Operations Ltd	100%
Cameron	Claim		4283950	Cameron Gold Operations Ltd	100%
West Cedar	Claim		3000802	Cameron Gold Operations Ltd	100%
West Cedar	Claim		3000803	Cameron Gold Operations Ltd	100%
West Cedar	Claim		3000804	Cameron Gold Operations Ltd	100%
West Cedar	Claim		1149862	Cameron Gold Operations Ltd	100%
West Cedar	Claim		1196649	Cameron Gold Operations Ltd	100%
West Cedar	Claim		3001240	Cameron Gold Operations Ltd	100%
West Cedar	Claim		3001298	Cameron Gold Operations Ltd	100%
West Cedar	Claim		3010497	Cameron Gold Operations Ltd	100%
West Cedar	Claim		3012199	Cameron Gold Operations Ltd	100%
Cameron	Mining Lease	108466	CLM289. Claims K527548-K527567, Nucanolan Property	Cameron Gold Operations Inc.	100%
Cameron	Claim		4248906	BARKAUSKAS, EDWARD ANTHONY (40%). BERGEN, CINDRA LEE (60%)	Earning in, option agreement
West Cedar	Mining Lease	107494	K314927, K314932, K351873, K351874, K351877, K351878	Cameron Gold Operations Ltd	100%
Rainy River	Claim		4254475	Coventry Resources Ontario Inc.	100%
Rainy River	Claim		4254476	Coventry Resources Ontario Inc.	100%
Rainy River	Claim		4254477	Coventry Resources Ontario Inc.	100%
Rainy River	Claim		4254478	Coventry Resources Ontario Inc.	100%
Rainy River	Claim		4254479	Coventry Resources Ontario Inc.	100%
Ardeen	Claim		1022635	Pele Gold Corporation	51%
Ardeen	Claim		1022636	Pele Gold Corporation	51%
Ardeen	Claim		1022637	Pele Gold Corporation	51%
Ardeen	Claim		1135465	Pele Gold Corporation	51%
Ardeen	Claim		1135466	Pele Gold Corporation	51%
Ardeen	Claim		1157496	Pele Gold Corporation	51%
Ardeen	Claim		1157497	Pele Gold Corporation	51%
Ardeen	Claim		1157666	Pele Gold Corporation	51%
Ardeen	Claim		1157667	Pele Gold Corporation	51%
Ardeen	Claim		1157668	Pele Gold Corporation	51%
Ardeen	Claim		1157670	Pele Gold Corporation	51%
Ardeen	Claim		1157671	Pele Gold Corporation	51%
Ardeen	Claim		1164874	Pele Gold Corporation	51%
Ardeen	Claim		1164875	Pele Gold Corporation	51%

Project	Tenement Type	Patent, PIN Number	Claim Number	Registered Holder	Percentage Ownership
Ardeen	Claim		1164876	Pele Gold Corporation	51%
Ardeen	Claim		1164877	Pele Gold Corporation	51%
Ardeen	Claim		1172315	Pele Gold Corporation	51%
Ardeen	Claim		1172316	Pele Gold Corporation	51%
Ardeen	Claim		1172317	Pele Gold Corporation	51%
Ardeen	Claim		1172340	Pele Gold Corporation	51%
Ardeen	Claim		1172345	Pele Gold Corporation	51%
Ardeen	Claim		1172346	Pele Gold Corporation	51%
Ardeen	Claim		1172347	Pele Gold Corporation	51%
Ardeen	Claim		1172348	Pele Gold Corporation	51%
Ardeen	Claim		1172349	Pele Gold Corporation	51%
Ardeen	Claim		1172350	Pele Gold Corporation	51%
Ardeen	Claim		1172355	Pele Gold Corporation	51%
Ardeen	Claim		1172356	Pele Gold Corporation	51%
Ardeen	Claim		1172365	Pele Gold Corporation	51%
Ardeen	Claim		1172366	Pele Gold Corporation	51%
Ardeen	Claim		1172367	Pele Gold Corporation	51%
Ardeen	Claim		1172368	Pele Gold Corporation	51%
Ardeen	Claim		1172369	Pele Gold Corporation	51%
Ardeen	Claim		1172375	Pele Gold Corporation	51%
Ardeen	Claim		1172385	Pele Gold Corporation	51%
Ardeen	Claim		1172386	Pele Gold Corporation	51%
Ardeen	Claim		1172387	Pele Gold Corporation	51%
Ardeen	Claim		1172388	Pele Gold Corporation	51%
Ardeen	Claim		1172395	Pele Gold Corporation	51%
Ardeen	Claim		1172396	Pele Gold Corporation	51%
Ardeen	Claim		1195937	Pele Gold Corporation	51%
Ardeen	Claim		1195940	Pele Gold Corporation	51%
Ardeen	Claim		1196147	Pele Gold Corporation	51%
Ardeen	Claim		1196239	Pele Gold Corporation	51%
Ardeen	Claim		1196240	Pele Gold Corporation	51%
Ardeen	Claim		1196870	Pele Gold Corporation	51%
Ardeen	Claim		1196921	Pele Gold Corporation	51%

Project	Tenement Type	Patent, PIN Number	Claim Number	Registered Holder	Percentage Ownership
Ardeen	Claim		1196923	Pele Gold Corporation	51%
Ardeen	Claim		1196924	Pele Gold Corporation	51%
Ardeen	Claim		1202036	Pele Gold Corporation	51%
Ardeen	Claim		1202264	Pele Gold Corporation	51%
Ardeen	Claim		1202265	Pele Gold Corporation	51%
Ardeen	Claim		1202302	Pele Gold Corporation	51%
Ardeen	Claim		1205201	Pele Gold Corporation	51%
Ardeen	Claim		1205202	Pele Gold Corporation	51%
Ardeen	Claim		1205203	Pele Gold Corporation	51%
Ardeen	Claim		1205204	Pele Gold Corporation	51%
Ardeen	Claim		1205287	Pele Gold Corporation	51%
Ardeen	Claim		1209440	Pele Gold Corporation	51%
Ardeen	Claim		1209441	Pele Gold Corporation	51%
Ardeen	Claim		1209470	Pele Gold Corporation	51%
Ardeen	Claim		1209697	Pele Gold Corporation	51%
Ardeen	Claim		1209698	Pele Gold Corporation	51%
Ardeen	Claim		1209770	Pele Gold Corporation	51%
Ardeen	Claim		1210243	Pele Gold Corporation	51%
Ardeen	Claim		1210245	Pele Gold Corporation	51%
Ardeen	Claim		1210776	Pele Gold Corporation	51%
Ardeen	Claim		1210792	Pele Gold Corporation	51%
Ardeen	Claim		1215147	Pele Gold Corporation	51%
Ardeen	Claim		1215148	Pele Gold Corporation	51%
Ardeen	Claim		1215149	Pele Gold Corporation	51%
Ardeen	Claim		1215450	Pele Gold Corporation	51%
Ardeen	Claim		1215451	Pele Gold Corporation	51%
Ardeen	Claim		1215452	Pele Gold Corporation	51%
Ardeen	Claim		1215453	Pele Gold Corporation	51%
Ardeen	Claim		1215454	Pele Gold Corporation	51%
Ardeen	Claim		1215751	Pele Gold Corporation	51%
Ardeen	Claim		1215752	Pele Gold Corporation	51%
Ardeen	Claim		1215758	Pele Gold Corporation	51%
Ardeen	Claim		1215760	Pele Gold Corporation	51%

Project	Tenement Type	Patent, PIN Number	Claim Number	Registered Holder	Percentage Ownership
Ardeen	Claim		1215831	Pele Gold Corporation	51%
Ardeen	Claim		1215859	Pele Gold Corporation	51%
Ardeen	Claim		1217105	Pele Gold Corporation	51%
Ardeen	Claim		1224629	Pele Gold Corporation	51%
Ardeen	Claim		3001505	Pele Gold Corporation	51%
Ardeen	Claim		3001506	Pele Gold Corporation	51%
Ardeen	Claim		3001507	Pele Gold Corporation	51%
Ardeen	Claim		677468	Pele Gold Corporation	51%
Ardeen	Claim		677469	Pele Gold Corporation	51%
Ardeen	Claim		677470	Pele Gold Corporation	51%
Ardeen	Claim		677471	Pele Gold Corporation	51%
Ardeen	Claim		677472	Pele Gold Corporation	51%
Ardeen	Claim		677473	Pele Gold Corporation	51%
Ardeen	Claim		677474	Pele Gold Corporation	51%
Ardeen	Claim		677475	Pele Gold Corporation	51%
Ardeen	Claim		677476	Pele Gold Corporation	51%
Ardeen	Claim		677477	Pele Gold Corporation	51%
Ardeen	Claim		677478	Pele Gold Corporation	51%
Ardeen	Claim		677479	Pele Gold Corporation	51%
Ardeen	Claim		786521	Pele Gold Corporation	51%
Ardeen	Claim		786522	Pele Gold Corporation	51%
Ardeen	Claim		786523	Pele Gold Corporation	51%
Ardeen	Claim		786524	Pele Gold Corporation	51%
Ardeen	Claim		786525	Pele Gold Corporation	51%
Ardeen	Claim		786526	Pele Gold Corporation	51%
Ardeen	Claim		786527	Pele Gold Corporation	51%
Ardeen	Claim		786528	Pele Gold Corporation	51%
Ardeen	Claim		786529	Pele Gold Corporation	51%
Ardeen	Claim		786541	Pele Gold Corporation	51%
Ardeen	Claim		786542	Pele Gold Corporation	51%
Ardeen	Claim		786543	Pele Gold Corporation	51%
Ardeen	Claim		786544	Pele Gold Corporation	51%
Ardeen	Claim		786545	Pele Gold Corporation	51%

Project	Tenement Type	Patent, PIN Number	Claim Number	Registered Holder	Percentage Ownership
Ardeen	Claim		813157	Pele Gold Corporation	51%
Ardeen	Claim		813158	Pele Gold Corporation	51%
Ardeen	Claim		813159	Pele Gold Corporation	51%
Ardeen	Claim		813160	Pele Gold Corporation	51%
Ardeen	Claim		813161	Pele Gold Corporation	51%
Ardeen	Claim		813162	Pele Gold Corporation	51%
Ardeen	Claim		813163	Pele Gold Corporation	51%
Ardeen	Claim		813164	Pele Gold Corporation	51%
Ardeen	Claim		813165	Pele Gold Corporation	51%
Ardeen	Claim		813166	Pele Gold Corporation	51%
Ardeen	Claim		835178	Pele Gold Corporation	51%
Ardeen	Claim		835179	Pele Gold Corporation	51%
Ardeen	Claim		835184	Pele Gold Corporation	51%
Ardeen	Claim		835185	Pele Gold Corporation	51%
Ardeen	Claim		835186	Pele Gold Corporation	51%
Ardeen	Claim		835187	Pele Gold Corporation	51%
Ardeen	Claim		835188	Pele Gold Corporation	51%
Ardeen	Claim		835189	Pele Gold Corporation	51%
Ardeen	Claim		835190	Pele Gold Corporation	51%
Ardeen	Claim		835195	Pele Gold Corporation	51%
Ardeen	Claim		835196	Pele Gold Corporation	51%
Ardeen	Claim		835197	Pele Gold Corporation	51%
Ardeen	Claim		835304	Pele Gold Corporation	51%
Ardeen	Claim		835305	Pele Gold Corporation	51%
Ardeen	Claim		835306	Pele Gold Corporation	51%
Ardeen	Claim		835307	Pele Gold Corporation	51%
Ardeen	Claim		835308	Pele Gold Corporation	51%
Ardeen	Claim		835309	Pele Gold Corporation	51%
Ardeen	Claim		835310	Pele Gold Corporation	51%
Ardeen	Claim		835311	Pele Gold Corporation	51%
Ardeen	Claim		835312	Pele Gold Corporation	51%
Ardeen	Claim		835313	Pele Gold Corporation	51%
Ardeen	Claim		863760	Pele Gold Corporation	51%

Project	Tenement Type	Patent, PIN Number	Claim Number	Registered Holder	Percentage Ownership
Ardeen	Claim		873515	Pele Gold Corporation	51%
Ardeen	Claim		873516	Pele Gold Corporation	51%
Ardeen	Claim		873517	Pele Gold Corporation	51%
Ardeen	Claim		873518	Pele Gold Corporation	51%
Ardeen	Claim		873519	Pele Gold Corporation	51%
Ardeen	Claim		873520	Pele Gold Corporation	51%
Ardeen	Claim		873522	Pele Gold Corporation	51%
Rainy River	Claim		4250319	Coventry Rainy River Inc.	100%
Rainy River	Claim		4260559	English, Perry Vern	Earning in , option agreement
Rainy River	Claim		4260560	English, Perry Vern	Earning in , option agreement
Rainy River	Claim		4260561	English, Perry Vern	Earning in , option agreement
Rainy River	Claim		4260562	English, Perry Vern	Earning in , option agreement
Rainy River	Claim		4260563	English, Perry Vern	Earning in , option agreement
Rainy River	Claim		4260564	English, Perry Vern	Earning in , option agreement
Rainy River	Claim		4260565	English, Perry Vern	Earning in , option agreement
Rainy River	Claim		4205809	English, Perry Vern	Earning in , option agreement
Rainy River	Claim		4205814	English, Perry Vern	Earning in , option agreement
Rainy River	Claim		4205815	English, Perry Vern	Earning in , option agreement
Rainy River	Claim		4205816	English, Perry Vern	Earning in , option agreement
Rainy River	Claim		4205817	English, Perry Vern	Earning in , option agreement
Rainy River	Claim		4205818	English, Perry Vern	Earning in , option agreement
Rainy River	Claim		4214438	English, Perry Vern	Earning in , option agreement
Rainy River	Claim		4214439	English, Perry Vern	Earning in , option agreement
Rainy River	Claim		4214440	English, Perry Vern	Earning in , option agreement
Rainy River	Claim		4214441	English, Perry Vern	Earning in , option agreement
Rainy River	Claim		4214442	English, Perry Vern	Earning in , option agreement
South Cedar	Claim		4254638	English, Perry Vern	Earning in , option agreement
South Cedar	Claim		4257501	English, Perry Vern	Earning in , option agreement
South Cedar	Claim		4257508	English, Perry Vern	Earning in , option agreement
South Cedar	Claim		4257510	English, Perry Vern	Earning in , option agreement
South Cedar	Claim		4257511	English, Perry Vern	Earning in , option agreement
South Cedar	Claim		4257515	English, Perry Vern	Earning in , option agreement
South Cedar	Claim		4257516	English, Perry Vern	Earning in , option agreement
South Cedar	Claim		4257517	English, Perry Vern	Earning in , option agreement

Project	Tenement Type	Patent, PIN Number	Claim Number	Registered Holder	Percentage Ownership
South Cedar	Claim		4260366	English, Perry Vern	Earning in , option agreement
South Cedar	Claim		4260515	English, Perry Vern	Earning in , option agreement
South Cedar	Claim		4260516	English, Perry Vern	Earning in , option agreement
South Cedar	Claim		4263609	English, Perry Vern	Earning in , option agreement
South Cedar	Claim		4272273	English, Perry Vern	Earning in , option agreement
South Cedar	Claim		4266941	English, Perry Vern	Earning in , option agreement
South Cedar	Claim		4266942	English, Perry Vern	Earning in , option agreement
South Cedar	Claim		4266943	English, Perry Vern	Earning in , option agreement
South Cedar	Claim		4266944	English, Perry Vern	Earning in , option agreement
West Cedar	Claim		4260514	English, Perry Vern	Earning in , option agreement
Rainy River	Patent	56046-0077		Shane & Rachel McQuaker	Earning in, Option agreement
Rainy River	Patent	56046-0079		Jan Wullum	Earning in, Option agreement
Rainy River	Patent	56046-0086		Gene Boyce	Earning in, Option agreement
Rainy River	Patent	56046-0076		Stevan Michael	Earning in, Option agreement
Rainy River	Patent	56046-0031		Kip Sharp	Earning in, Option agreement
Rainy River	Patent	56046-0034		Wade Kempka	Earning in, Option agreement
Rainy River	Patent	56046-0038		Wade & Shane Kempka & Madison	Earning in, Option agreement
Rainy River	Patent	56046-0044		Wade & Shane Kempka & Madison	Earning in, Option agreement
Cameron Gold	Claim		4274088	English, Perry Vern (on behalf of Rubicon Minerals Corporation)	Earning in, Option agreement
Cameron Gold	Claim		4274089	English, Perry Vern (on behalf of Rubicon Minerals Corporation)	Earning in, Option agreement
Cameron Gold	Claim		4274090	English, Perry Vern (on behalf of Rubicon Minerals Corporation)	Earning in, Option agreement
Cameron Gold	Claim		4274091	English, Perry Vern (on behalf of Rubicon Minerals Corporation)	Earning in, Option agreement
Cameron Gold	Claim		4274092	English, Perry Vern (on behalf of Rubicon Minerals Corporation)	Earning in, Option agreement
Cameron Gold	Claim		4274093	English, Perry Vern (on behalf of Rubicon Minerals Corporation)	Earning in, Option agreement
Cameron Gold	Claim		4274094	English, Perry Vern (on behalf of Rubicon Minerals Corporation)	Earning in, Option agreement
Cameron Gold	Claim		4274095	English, Perry Vern (on behalf of Rubicon Minerals Corporation)	Earning in, Option agreement
Cameron Gold	Claim		4274096	English, Perry Vern (on behalf of Rubicon Minerals Corporation)	Earning in, Option agreement
Cameron Gold	Claim		4274074	English, Perry Vern (on behalf of Rubicon Minerals Corporation)	Earning in, Option agreement
Cameron Gold	Claim		4276500	English, Perry Vern (on behalf of Rubicon Minerals Corporation)	Earning in, Option agreement
Cameron Gold	Claim		4276506	English, Perry Vern (on behalf of Rubicon Minerals Corporation)	Earning in, Option agreement
Cameron Gold	Claim		4276512	English, Perry Vern (on behalf of Rubicon Minerals Corporation)	Earning in, Option agreement
Cameron Gold	Claim		4276513	English, Perry Vern (on behalf of Rubicon Minerals Corporation)	Earning in, Option agreement
Cameron Gold	Claim		4276514	English, Perry Vern (on behalf of Rubicon Minerals Corporation)	Earning in, Option agreement

Project	Tenement Type	Patent, PIN Number	Claim Number	Registered Holder	Percentage Ownership
Cameron Gold	Claim		4276515	English, Perry Vern (on behalf of Rubicon Minerals Corporation)	Earning in, Option agreement
Cameron Gold	Claim		4276516	English, Perry Vern (on behalf of Rubicon Minerals Corporation)	Earning in, Option agreement
Cameron Gold	Claim		4276517	English, Perry Vern (on behalf of Rubicon Minerals Corporation)	Earning in, Option agreement
Cameron Gold	Claim		4276518	English, Perry Vern (on behalf of Rubicon Minerals Corporation)	Earning in, Option agreement
Cameron Gold	Claim		4276519	English, Perry Vern (on behalf of Rubicon Minerals Corporation)	Earning in, Option agreement
Cameron Gold	Claim		4276522	English, Perry Vern (on behalf of Rubicon Minerals Corporation)	Earning in, Option agreement
Cameron Gold	Claim		4276523	English, Perry Vern (on behalf of Rubicon Minerals Corporation)	Earning in, Option agreement
Cameron Gold	Claim		4267651	English, Perry Vern (on behalf of Rubicon Minerals Corporation)	Earning in, Option agreement
Cameron Gold	Claim		4267652	English, Perry Vern (on behalf of Rubicon Minerals Corporation)	Earning in, Option agreement
Cameron Gold	Claim		4267653	English, Perry Vern (on behalf of Rubicon Minerals Corporation)	Earning in, Option agreement
Cameron Gold	Claim		4267654	English, Perry Vern (on behalf of Rubicon Minerals Corporation)	Earning in, Option agreement
Cameron Gold	Claim		4267655	English, Perry Vern (on behalf of Rubicon Minerals Corporation)	Earning in, Option agreement
Cameron Gold	Claim		4267656	English, Perry Vern (on behalf of Rubicon Minerals Corporation)	Earning in, Option agreement
Cameron Gold	Claim		4267657	English, Perry Vern (on behalf of Rubicon Minerals Corporation)	Earning in, Option agreement
Cameron Gold	Claim		4283111	English, Perry Vern (on behalf of Rubicon Minerals Corporation)	Earning in, Option agreement
Cameron Gold	Claim		4283112	English, Perry Vern (on behalf of Rubicon Minerals Corporation)	Earning in, Option agreement
Cameron Gold	Claim		4283113	English, Perry Vern (on behalf of Rubicon Minerals Corporation)	Earning in, Option agreement
Cameron Gold	Claim		4283114	English, Perry Vern (on behalf of Rubicon Minerals Corporation)	Earning in, Option agreement
Cameron Gold	Claim		4283115	English, Perry Vern (on behalf of Rubicon Minerals Corporation)	Earning in, Option agreement
Cameron Gold	Claim		4283116	English, Perry Vern (on behalf of Rubicon Minerals Corporation)	Earning in, Option agreement
Cameron Gold	Claim		4283117	English, Perry Vern (on behalf of Rubicon Minerals Corporation)	Earning in, Option agreement
Cameron Gold	Claim		4283118	English, Perry Vern (on behalf of Rubicon Minerals Corporation)	Earning in, Option agreement
Cameron Gold	Claim		4283119	English, Perry Vern (on behalf of Rubicon Minerals Corporation)	Earning in, Option agreement
Cameron Gold	Claim		4283120	English, Perry Vern (on behalf of Rubicon Minerals Corporation)	Earning in, Option agreement
Cameron Gold	Claim		4283731	English, Perry Vern (on behalf of Rubicon Minerals Corporation)	Earning in, Option agreement
Cameron Gold	Claim		4283732	English, Perry Vern (on behalf of Rubicon Minerals Corporation)	Earning in, Option agreement
Cameron Gold	Claim		4283734	English, Perry Vern (on behalf of Rubicon Minerals Corporation)	Earning in, Option agreement
Cameron Gold	Claim		4283735	English, Perry Vern (on behalf of Rubicon Minerals Corporation)	Earning in, Option agreement
Cameron Gold	Claim		4283736	English, Perry Vern (on behalf of Rubicon Minerals Corporation)	Earning in, Option agreement
Cameron Gold	Claim		4283737	English, Perry Vern (on behalf of Rubicon Minerals Corporation)	Earning in, Option agreement
Cameron Gold	Claim		4283738	English, Perry Vern (on behalf of Rubicon Minerals Corporation)	Earning in, Option agreement
Croteau Est	Mining Claim		2188150	Northern Superior Resources Inc. (81897) 100%	JV earning up to 65%
Croteau Est	Mining Claim		2188151	Northern Superior Resources Inc. (81897) 100%	JV earning up to 65%

[illegible]

[illegible]

[illegible]

[illegible]

[illegible]

[illegible]

[illegible]

[illegible]

[illegible]

Project	Tenement Type	Patent, PIN Number	Claim Number	Registered Holder	Percentage Ownership
Croteau Est	Mining Claim		5281369	Northern Superior Resources Inc. (81897) 100%	JV earning up to 65%
Croteau Est	Mining Claim		5281370	Northern Superior Resources Inc. (81897) 100%	JV earning up to 65%
Croteau Est	Mining Claim		5281352	Northern Superior Resources Inc. (81897) 100%	JV earning up to 65%
Croteau Est	Mining Claim		5281353	Northern Superior Resources Inc. (81897) 100%	JV earning up to 65%
Croteau Est	Mining Claim		5281357	Northern Superior Resources Inc. (81897) 100%	JV earning up to 65%

Appendix 6 – Tenements acquired (Canada)

[illegible]

[illegible]

[illegible]

[illegible]

[illegible]

[illegible]

Project	Tenement Type	Claim Number	Registered Holder	Percentage Ownership
Croteau Est	Mining Claim	5279980	Northern Superior Resources Inc. (81897) 100%	JV earning up to 65%
Croteau Est	Mining Claim	5279981	Northern Superior Resources Inc. (81897) 100%	JV earning up to 65%
Croteau Est	Mining Claim	5279982	Northern Superior Resources Inc. (81897) 100%	JV earning up to 65%
Croteau Est	Mining Claim	5279983	Northern Superior Resources Inc. (81897) 100%	JV earning up to 65%
Croteau Est	Mining Claim	5279984	Northern Superior Resources Inc. (81897) 100%	JV earning up to 65%
Croteau Est	Mining Claim	5279985	Northern Superior Resources Inc. (81897) 100%	JV earning up to 65%
Croteau Est	Mining Claim	5279986	Northern Superior Resources Inc. (81897) 100%	JV earning up to 65%
Croteau Est	Mining Claim	5279987	Northern Superior Resources Inc. (81897) 100%	JV earning up to 65%
Croteau Est	Mining Claim	5279988	Northern Superior Resources Inc. (81897) 100%	JV earning up to 65%
Croteau Est	Mining Claim	5279989	Northern Superior Resources Inc. (81897) 100%	JV earning up to 65%
Croteau Est	Mining Claim	5279990	Northern Superior Resources Inc. (81897) 100%	JV earning up to 65%
Croteau Est	Mining Claim	5279991	Northern Superior Resources Inc. (81897) 100%	JV earning up to 65%
Croteau Est	Mining Claim	5279992	Northern Superior Resources Inc. (81897) 100%	JV earning up to 65%
Croteau Est	Mining Claim	5279993	Northern Superior Resources Inc. (81897) 100%	JV earning up to 65%
Croteau Est	Mining Claim	5279994	Northern Superior Resources Inc. (81897) 100%	JV earning up to 65%
Croteau Est	Mining Claim	5279995	Northern Superior Resources Inc. (81897) 100%	JV earning up to 65%
Croteau Est	Mining Claim	5281345	Northern Superior Resources Inc. (81897) 100%	JV earning up to 65%
Croteau Est	Mining Claim	5281351	Northern Superior Resources Inc. (81897) 100%	JV earning up to 65%
Croteau Est	Mining Claim	5281368	Northern Superior Resources Inc. (81897) 100%	JV earning up to 65%
Croteau Est	Mining Claim	5281369	Northern Superior Resources Inc. (81897) 100%	JV earning up to 65%
Croteau Est	Mining Claim	5281370	Northern Superior Resources Inc. (81897) 100%	JV earning up to 65%
Croteau Est	Mining Claim	5281352	Northern Superior Resources Inc. (81897) 100%	JV earning up to 65%
Croteau Est	Mining Claim	5281353	Northern Superior Resources Inc. (81897) 100%	JV earning up to 65%
Croteau Est	Mining Claim	5281357	Northern Superior Resources Inc. (81897) 100%	JV earning up to 65%

Appendix 5B

Mining exploration entity and oil and gas exploration entity quarterly report

Introduced 01/07/96 Origin Appendix 8 Amended 01/07/97, 01/07/98, 30/09/01, 01/06/10, 17/12/10, 01/05/2013

Name of entity

Chalice Gold Mines Limited

ABN

47 116 648 956

Quarter ended ("current quarter")

30 June 2015

Consolidated statement of cash flows

		Current quarter	Year to date
		\$A'000	(12 months) \$A'000
Cash flows related to operating activities			
1.1	Receipts from product sales and related debtors	53	125
1.2	Payments for (a) exploration & evaluation	(824)	(2,841)
	(b) development	-	-
	(c) production	-	-
	(d) administration	(243)	(2,164)
1.3	Dividends received	-	-
1.4	Interest and other items of a similar nature received	83	479
1.5	Interest and other costs of finance paid	-	-
1.6	Income taxes paid	-	(379)
1.7	Other (provide details if material)	(272)	(1,497)
		(1,203)	(6,277)
Net Operating Cash Flows			
Cash flows related to investing activities			
1.8	Payment for purchases of:		
	(a) prospects	-	(725)
	(b) equity investments	-	-
	(c) other fixed assets	(100)	(125)
1.9	Proceeds from sale of:		
	(a) prospects	-	-
	(b) equity investments	-	-
	(c) other fixed assets	-	449
1.10	Loans to other entities	-	-
1.11	Loans repaid by other entities	-	-
1.12	Other (provide details if material)	-	(2,052)
		(100)	(2,453)
Net investing cash flows			
1.13	Total operating and investing cash flows (carried forward)	(1,303)	(8,730)

+ See chapter 19 for defined terms.

Appendix 5B

Mining exploration entity and oil and gas exploration entity quarterly report

1.13	Total operating and investing cash flows (brought forward)	(1,303)	(8,730)
	Cash flows related to financing activities		
1.14	Proceeds from issues of shares, options, etc.	-	-
1.15	Proceeds from sale of forfeited shares	-	-
1.16	Proceeds from borrowings	-	-
1.17	Repayment of borrowings	-	-
1.18	Dividends paid	-	-
1.19	Other (provide details if material)	(17)	(534)
	Net financing cash flows	(17)	(534)
	Net increase (decrease) in cash held	(1,320)	(9,264)
1.20	Cash at beginning of quarter/year to date	41,034	44,204
1.21	Exchange rate adjustments to item 1.20	151	4,925
1.22	Cash at end of quarter	41,034	39,865

Payments to directors of the entity, associates of the directors, related entities of the entity and associates of the related entities

	Current quarter \$A'ooo
1.23 Aggregate amount of payments to the parties included in item 1.2	159
1.24 Aggregate amount of loans to the parties included in item 1.10	-

1.25 Explanation necessary for an understanding of the transactions

Item 1.7 - represents costs associated with business development activities.
Item 1.12 - represents the consideration payment of CAD\$2 million for the acquisition of two-thirds of the 3% royalty over the Cameron deposit.
Item 1.19 – represents costs associated with the on-market buy-back and minimum holding share buyback.
Item 1.23 - Amounts paid to related parties includes remuneration, directors' fees and consulting fees paid to directors.

Non-cash financing and investing activities

2.1 Details of financing and investing transactions which have had a material effect on consolidated assets and liabilities but did not involve cash flows

Nil

+ See chapter 19 for defined terms.

Appendix 5B

Mining exploration entity and oil and gas exploration entity quarterly report

- 2.2 Details of outlays made by other entities to establish or increase their share in projects in which the reporting entity has an interest

Nil

Financing facilities available

Add notes as necessary for an understanding of the position.

	Amount available \$A'ooo	Amount used \$A'ooo
3.1 Loan facilities	Nil	Nil
3.2 Credit standby arrangements	Nil	Nil

Estimated cash outflows for next quarter

	\$A'ooo
4.1 Exploration and evaluation	(2,200)
4.2 Development	
4.3 Production	
4.4 Administration	(350)
Total	(2,550)

Reconciliation of cash

Reconciliation of cash at the end of the quarter (as shown in the consolidated statement of cash flows) to the related items in the accounts is as follows.

	Current quarter \$A'ooo	Previous quarter \$A'ooo
5.1 Cash on hand and at bank	18,651	9,019
5.2 Deposits at call	21,214	32,015
5.3 Bank overdraft	-	-
5.4 Other (provide details)	-	-
Total: cash at end of quarter (item 1.22)	39,865	41,034

+ See chapter 19 for defined terms.

Appendix 5B

Mining exploration entity and oil and gas exploration entity quarterly report

Changes in interests in mining tenements and petroleum tenements

		Tenement reference and location	Nature of interest (note (2))	Interest at beginning of quarter	Interest at end of quarter
6.1	Interests in mining tenements and petroleum tenements relinquished, reduced or lapsed	Canada: <i>Rainy River Project</i> Claim: - 4250316	100% owned	100%	0%
6.2	Interests in mining tenements and petroleum tenements acquired or increased	Canada: Refer Appendix 1.			

Issued and quoted securities at end of current quarter

Description includes rate of interest and any redemption or conversion rights together with prices and dates.

		Total number	Number quoted	Issue price per security (see note 3) (cents)	Amount paid up per security (see note 3) (cents)
7.1	Preference securities (description)	Nil	Nil	N/A	N/A
7.2	Changes during quarter (a) Increases through issues (b) Decreases through returns of capital, buy-backs, redemptions	N/A	N/A	N/A	N/A
7.3	*Ordinary securities	282,710,802	282,710,802	N/A	N/A
7.4	Changes during quarter (a) Increases through issues (b) Decreases through returns of capital, buy-backs	Nil Nil	Nil Nil	N/A N/A	N/A N/A

+ See chapter 19 for defined terms.

Appendix 5B

Mining exploration entity and oil and gas exploration entity quarterly report

7.5	*Convertible debt securities (description)	Nil	N/A	N/A	N/A
7.6	Changes during quarter (a) Increases through issues (b) Decreases through securities matured, converted	Nil Nil	Nil Nil	N/A N/A	N/A N/A
7.7	Options (unlisted)	1,050,000 500,000	Nil Nil	Exercise price \$0.30 \$0.25	Expiry date 30 June 2016 31 October 2017
	Performance Rights	3,530,707 3,783,673	Nil Nil	N/A N/A	30 June 2018 30 June 2019
7.8	Issued during quarter Options Performance Rights	Nil 3,783,673	Nil Nil	N/A N/A	N/A 30 June 2019
7.9	Exercised during quarter Options Performance Rights	Nil Nil	Nil Nil	N/A N/A	N/A N/A
7.10	Expired during quarter Options Performance Rights	Nil Nil	Nil Nil	N/A N/A	N/A N/A
7.11	Debentures (totals only)	Nil	Nil		
7.12	Unsecured notes (totals only)	Nil	Nil		

Compliance statement

- This statement has been prepared under accounting policies which comply with accounting standards as defined in the Corporations Act or other standards acceptable to ASX (see note 5).
- This statement does give a true and fair view of the matters disclosed.

+ See chapter 19 for defined terms.

Appendix 5B

Mining exploration entity and oil and gas exploration entity quarterly report

Sign here:



Date: 20 July 2015

(Company secretary)

Print name:

Leanne Stevens

Notes

- 1 The quarterly report provides a basis for informing the market how the entity's activities have been financed for the past quarter and the effect on its cash position. An entity wanting to disclose additional information is encouraged to do so, in a note or notes attached to this report.
- 2 The "Nature of interest" (items 6.1 and 6.2) includes options in respect of interests in mining tenements and petroleum tenements acquired, exercised or lapsed during the reporting period. If the entity is involved in a joint venture agreement and there are conditions precedent which will change its percentage interest in a mining tenement or petroleum tenement, it should disclose the change of percentage interest and conditions precedent in the list required for items 6.1 and 6.2.
- 3 **Issued and quoted securities** The issue price and amount paid up is not required in items 7.1 and 7.3 for fully paid securities.
- 4 The definitions in, and provisions of, *AASB 6: Exploration for and Evaluation of Mineral Resources* and *AASB 107: Statement of Cash Flows* apply to this report.
- 5 **Accounting Standards** ASX will accept, for example, the use of International Financial Reporting Standards for foreign entities. If the standards used do not address a topic, the Australian standard on that topic (if any) must be complied with.

== == == == ==

+ See chapter 19 for defined terms.

Appendix 1 – Interests in mining tenements acquired or increased

[illegible]

[illegible]

[illegible]

[illegible]