



ASX Announcement

31 July 2017

June 2017 Quarterly Activities Report

Significant new gold and base metal-focused exploration initiative commences in Canada and Australia

Highlights

- **A\$7.5m exploration initiative, including >22,000m drilling, commenced across five high-potential gold and base metals projects in Canada and Australia:**
 - **East Cadillac Gold Project**, located 35km east of Val-d'Or and covering a 16km strike of the eastern part of the Larder Lake-Cadillac Fault, a district that has a gold endowment of +100Moz.
 - **Kinebik Gold Project** which covers a 30km strike of the Casa Berardi Fault, a structure that hosts multiple gold deposits.
 - 9,500m of diamond drilling planned in H2 2017 on the Canadian gold projects to test multiple targets, including extensions of the existing high-grade mineral resource and along the prospective Larder Lake-Cadillac Fault corridor, plus follow-up geochemical anomalies at Kinebik.
 - **Warrego North Iron Oxide Copper-Gold ("IOCG") Project**, Northern Territory – drilling planned in H2 2017 to expand the recent Parakeet copper-gold discovery.
 - **Latitude Hill Nickel Project**, Western Australia – 9,000m drill program in H2 2017 to test multiple Spectrem EM conductors with Voisey's Bay and Nova-Bollinger style nickel-copper discovery potential.
 - **West Pilbara Gold and Base Metals Project**, Western Australia – 4,000m aircore and RC drill program at three gold and copper targets in H2 2017.
- **Tennant Creek-style IOCG mineralisation confirmed at the Parakeet prospect, with maiden drill hole WND17-001 returning an intercept of 8m at 1.74% Cu and 0.42g/t Au from 249m down-hole. Follow-up drilling planned for the September Quarter.**
- **Chalice subscribed to a share placement of 40m shares in Ausgold Limited (ASX: AUC) at an issue price of 2.5c for a total of \$1.0m.**
- **Chalice is well positioned to expand exploration activities based on success, with cash and liquid investments of A\$52.4m at Quarter-end.**

1. OVERVIEW

Chalice Gold Mines Limited ("Chalice" or "the Company") (**ASX: CHN**) (**TSX: CXN**) is pleased to report on an active Quarter, which saw it completed preparations for a A\$7.5 million exploration initiative, including up to 22,000m of planned drilling, to advance several high-priority gold and base metal targets contained within its extensive Canadian and Australian project portfolio (Table 1).

The ramp-up in exploration activities includes geophysical programs across all core projects which are aimed at defining additional targets for immediate drill follow-up. The Company is conducting extensive 3D 'Orevison' pole-dipole Induced Polarisation ("IP") surveys on its Canadian gold projects, including ~390 line km at East Cadillac and ~75 line km at Kinebik.

These surveys should assist in defining targets along the prominent gold endowment trends that host known gold deposits and mineralization in the region (the Larder Lake-Cadillac and Casa Berardi faults). Geophysical surveys are also currently underway on the Company's Australian projects, include a ~100 line km moving-loop EM survey at the Latitude Hill Nickel Project to follow up on Spectrem airborne EM conductors, three gradient array IP surveys (25 line km) at the West Pilbara Gold Project, and a detailed 3D pole-dipole IP survey (23 line km) at Warrego North.

During the Quarter, the Company intersected Tennant Creek-style IOCG mineralisation at Warrego North in its maiden drill program with drill hole WND17-001 reporting **8m @ 1.74% Cu and 0.42g/t Au** between 249-257m from interstitial and stringer (vein)-style chalcopryite mineralisation in magnetite ironstone. A ground IP survey is currently underway over the Parakeet prospect to assist with defining drill targets in the vicinity of the WND17-001 copper-gold intersection, and elsewhere within the prospect.

Chalice has systematically assembled a global exploration portfolio that offers outstanding potential for new discoveries in some of the best exploration addresses in the world. It is now time to evaluate the potential of this portfolio and the Company is in the enviable position of having the balance sheet and the in-house technical expertise to support a mid-tier scale exploration effort without diluting our shareholders at either the company or project level.

Table 1: Overview and approximate timeline for proposed FY 2018 exploration program

Project/Exploration Program	September 2017 Quarter	December 2017 Quarter
East Cadillac Gold Project		
Sampling/trenching	Extensive surface sampling and trenching	
IP Geophysical Survey	390 line km	
Drilling		7,700m diamond
Kinebik Gold Project		
IP Geophysical Survey	55 line km	
Drilling		1,800m diamond
Latitude Hill Nickel Project		
MLEM Geophysical Survey	Survey 7 anomalies	
Drilling		9,000m RC
Warrego North IOCG Project		
IP Geophysical Survey	23 line km	
Drilling	1,000m RC & diamond	
West Pilbara Gold & Base Metals Projects		
IP Geophysical Survey	25 line km	
Drilling	4,000m aircore, RC	

2. EXPLORATION ACTIVITIES

East Cadillac Gold Project, Quebec, Canada

The East Cadillac Gold Project ("ECG Project") covers an area of 107km² and is located 35km east of the 20 million oz Val-d'Or gold camp (Figure 1). With land holdings encompassing a strike length of 16km of the Larder Lake-Cadillac Fault, the most prolifically gold endowment trend in southern Abitibi, the project is situated amongst some of the region's most significant mines and is adjacent to the historical Chimo gold mine (owned by Cartier Resources (TSX: ECR)).

No modern surface geochemistry, geological mapping or structural analysis has been completed in the district. The Company has analysed historical exploration information and merged this data with results from recent exploration activities undertaken by Chalice. This compilation provides the basis for an integrated approach to exploration targeting over the Company's consolidated land position.

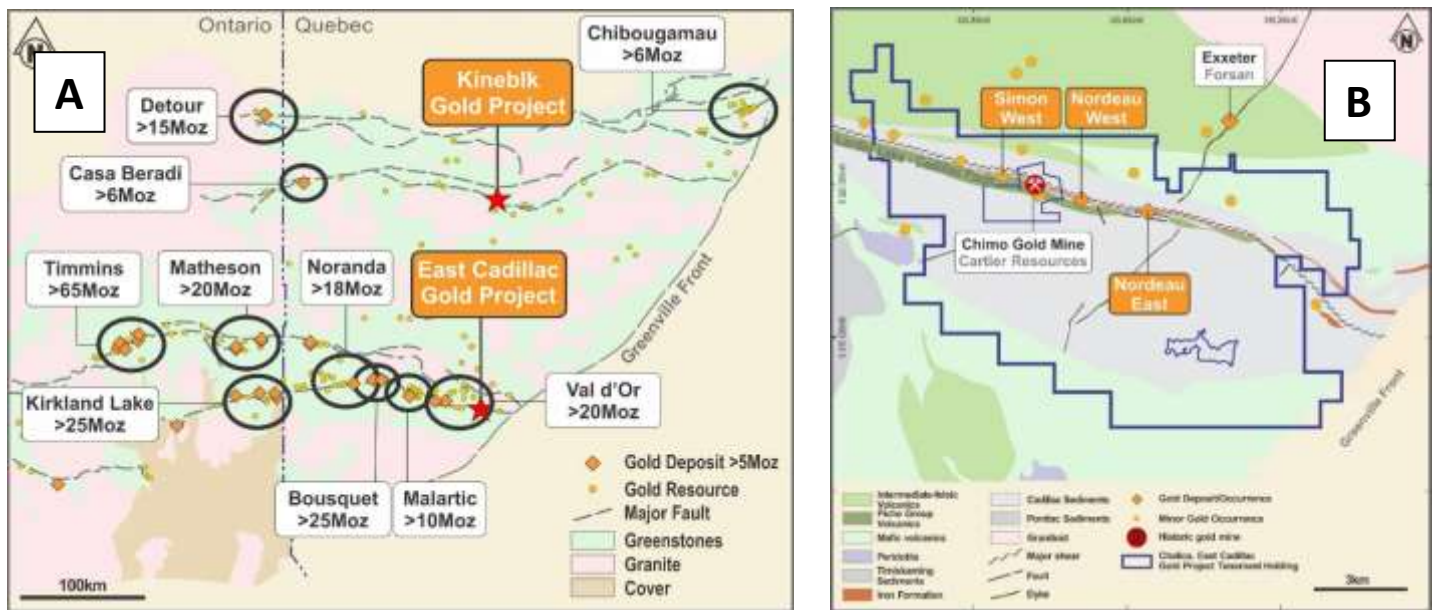


Figure 1. East Cadillac and Kinebik Gold Project Locations (A) and detailed East Cadillac Property and Geology Map (B)

During the Quarter, the Company completed a five-week field program which comprised 1,149 soil Mobile Metal Ion (“MMI”) on a 400m x 400m and 200m x 200m grid and 64 rock-chip samples covering the entire ECG project area (Figure 2). Samples are currently awaiting analysis and results are expected to be received commencing in late July.

A detailed aeromagnetic survey at 70m line spacing and a LIDAR (Light Detection and Ranging) survey were also completed over the entire ECG project to assist in understanding the broad controls on gold mineralization and identifying favourable lithological and/or structural targets.

In addition, as a result of limited historical IP survey data, a proof-of-concept Dipole-Dipole IP 3D ‘Orevison’ survey was completed over the Nordeau West deposit on eight 100m spaced survey lines, which delineated a chargeability anomaly coincident with the drill indicated position of the Nordeau West deposit.

Given the positive results of this survey, the dipole-dipole P survey has been extended to survey the entire extent of Larder Lake-Cadillac (Figures 3 and 4) fault on 200m spaced lines to further assist in defining drill targets for the upcoming drilling campaign.

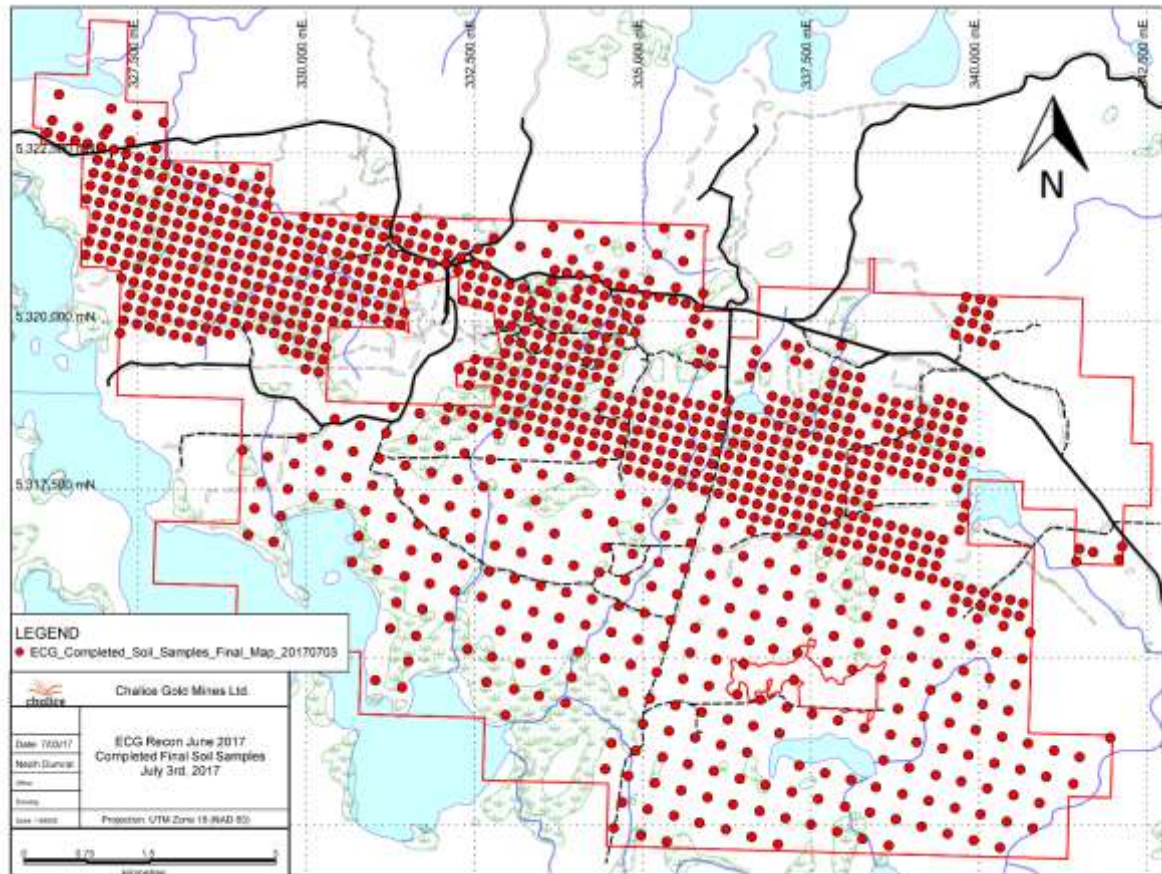


Figure 2. June-July 2017 surface geochemical program ECG



Figure 3. Proposed IP survey – East Block (Black rectangle), drill lines (red boxes)

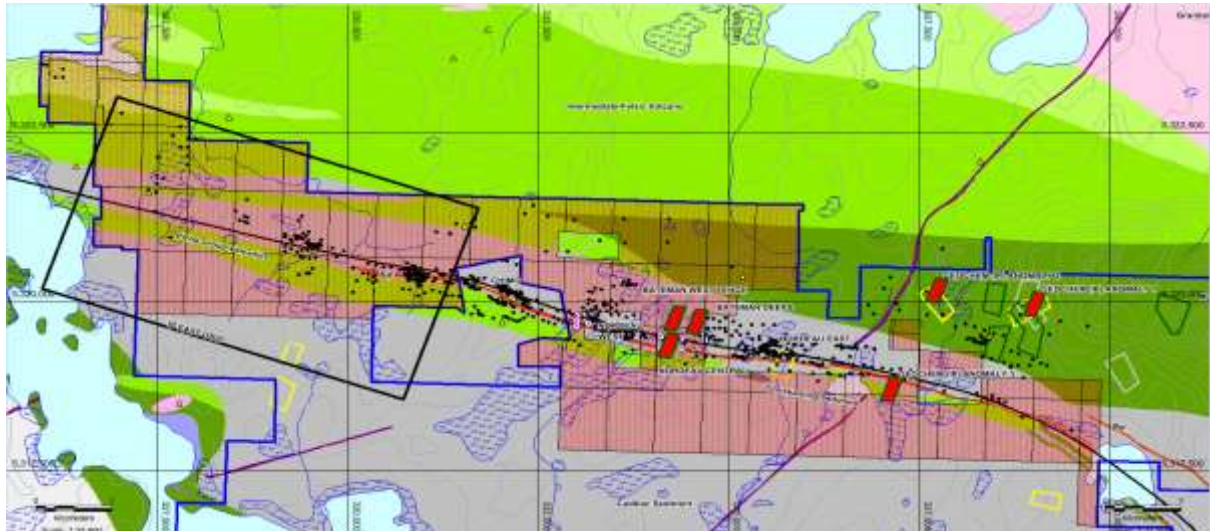


Figure 4. Proposed IP – West Block (black rectangle), drilling lines (red boxes)

Kinebik Gold Project, Quebec, Canada

The 100%-owned Kinebik Gold Project covers an area of 187km², including a 30km strike of the Casa Berardi fault, which hosts Hecla Mining Company's (NYSE:HL) Casa Berardi multi-million ounce gold mine and numerous other gold occurrences.

MMI soil sampling has identified three geochemical anomalies with moderate to strong Au-Ag-W responses situated close to the Casa Berardi fault (Figure 5). These anomalies which will be prioritised with a dipole-dipole 3D 'Orevision' IP survey and diamond drilling of priority targets.

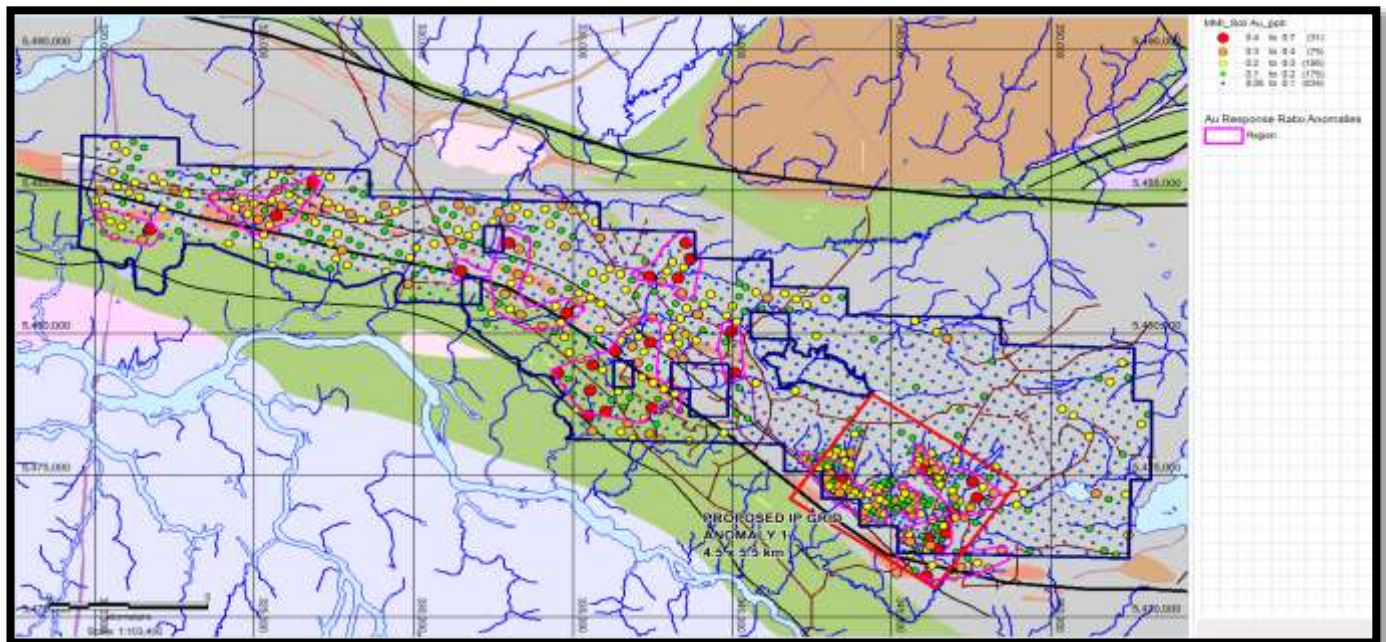


Figure 5. MMI multi-element soil geochemical anomalies Au response ratios and priority target for IP (Anomaly 1).

Warrego North IOCG Project, Northern Territory, Australia

The Warrego North Project is located approximately 20km north-west of the historical high-grade Warrego copper-gold mine in the western part of the Tennant Creek Mineral Field in the Northern Territory, Australia (Figure 6). Warrego was the largest deposit mined in the area with historical production of 1.3 million oz of gold and 90,000 tonnes of copper from 5 million tonnes of ore at 8g/t gold and 2% copper in a classic iron oxide copper gold ("IOCG") geological setting. Chalice can earn up to a 70% interest in the project from Meteoric Resources NL by sole funding \$800,000.

The Company's first of two diamond drill holes drilled during the Quarter at Warrego North, WND17-001, targeted a coincidental magnetic-gravity and IP chargeability anomaly (Figure 6) and intersected chalcopyrite in magnetite ironstones grading **8m @ 1.74% copper and 0.42g/t gold** between 249-257m down-hole. Pervasive chlorite-sericite alteration indicates the potential for an extensive hydrothermal system, which is a characteristic of IOCG deposits.

The Company is encouraged by the results of its maiden drilling program, and has recently commenced a detailed 3D IP survey subsequent to quarter-end. The results from this survey will be used to assist in planning immediate follow-up drilling for extensions to the mineralisation discovered in hole WND17-001 and a second, stronger, chargeability anomaly located about 300m north of WND17-001 (Figure 7), which remains untested and could indicate potential for additional sulphide mineralisation in that area.

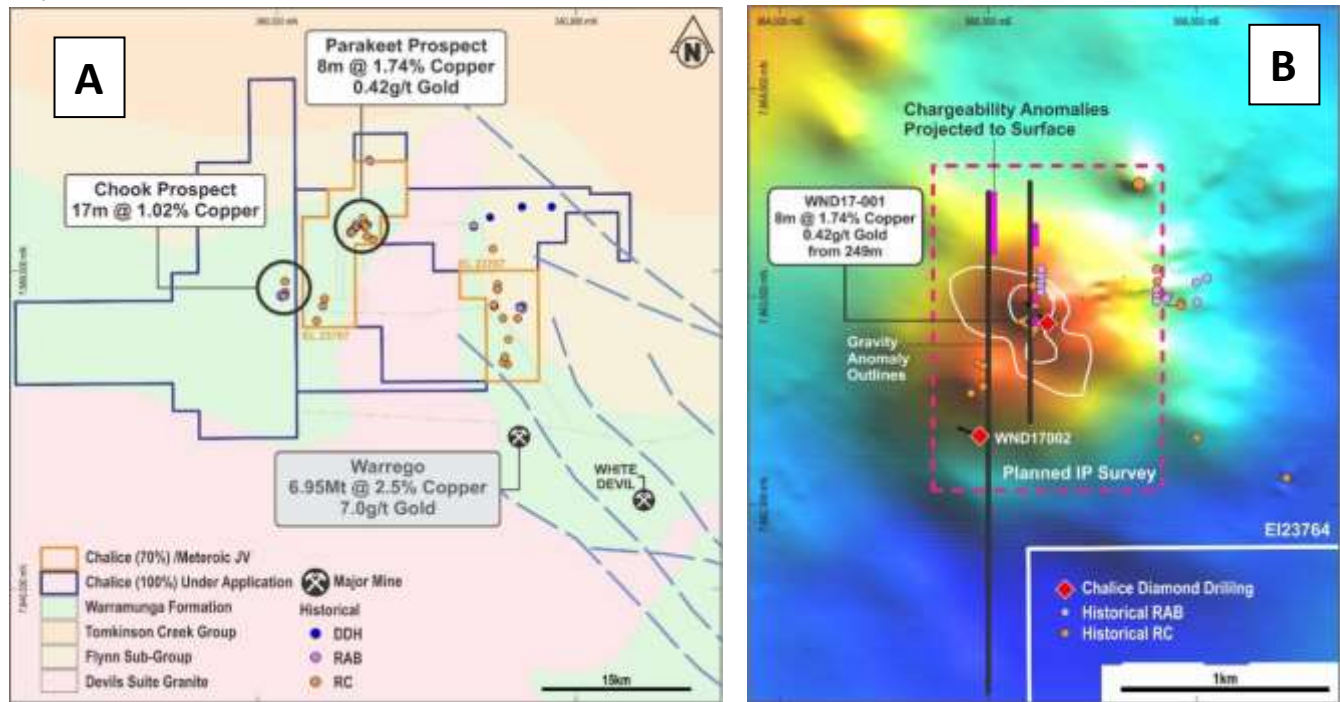


Figure 6. Warrego North Project Location, Northern Territory, Australia (A) and Parakeet aeromagnetic image with superimposed gravity, IP and drill collars (B)

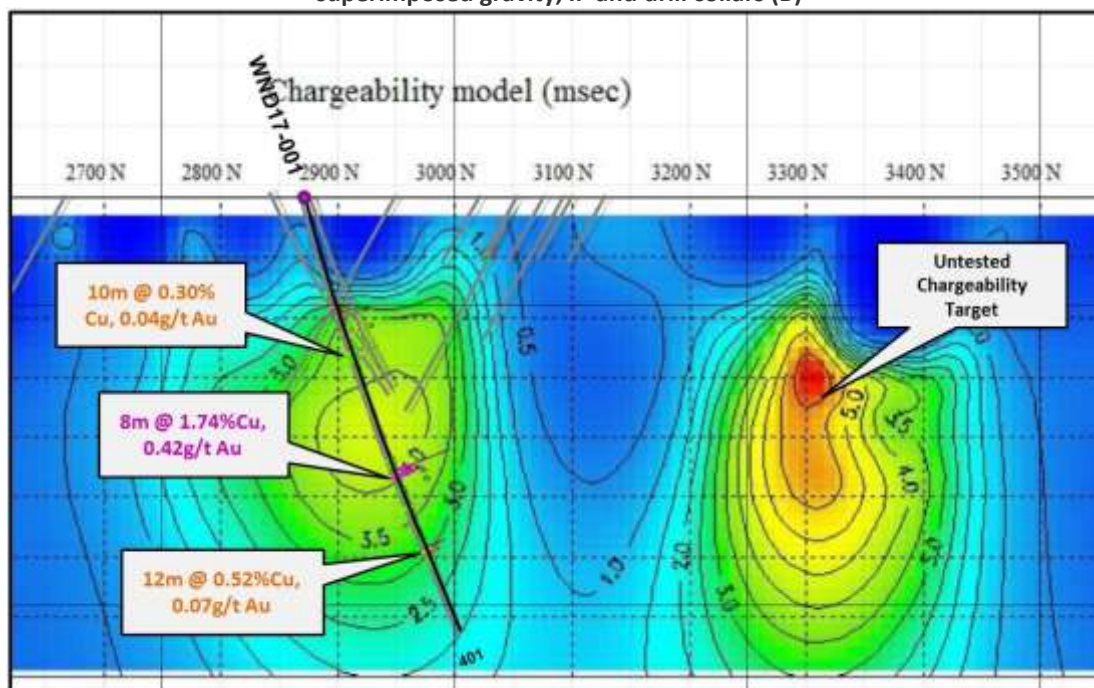


Figure 7. IP chargeability section showing WND17-001 intersection and untested chargeability anomaly located 300m N of WND17-001

Latitude Hill Nickel Project, Western Australia

The 990.5km² Latitude Hill Project (Figure 8) was acquired to provide Chalice with a counter-cyclical investment opportunity in an under-explored region that is highly prospective for massive and disseminated nickel-copper-platinum group metals sulphide deposits similar to the Nova-Bollinger nickel-copper sulphide deposit in the Albany-Fraser Orogen. The project is subject to a farm-in and joint venture whereby Chalice can earn up to a 51% interest with Traka Resources Limited (ASX: TKL) (and up 70% if Traka elects not to contribute thereafter).

A high quality 'Spectrem' Airborne Electromagnetic (EM) survey completed in 2012 by Anglo American, when they were in joint venture in the area with Traka, identified seven priority conductors that were not subsequently followed up (Figure 8). None of these priority conductors have been subject to ground-based exploration.

During the Quarter, all five tenements were progressed to grant. A program of moving-loop EM ("MLEM") commenced in late June to survey six of the seven Spectrem airborne EM conductors. The MLEM survey is expected to be completed in early August. Preparations are well underway for a 9,000m RC drill program, which is anticipated to commence in late August 2017, subject to approval of program of works by the DMP.

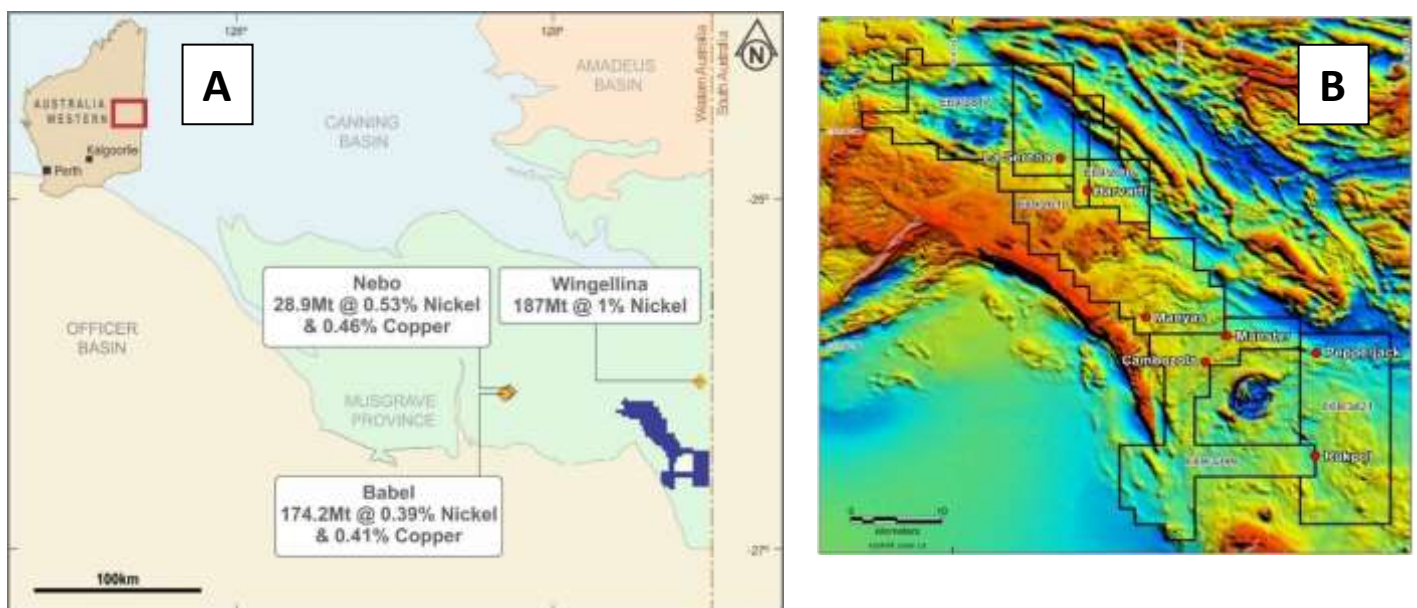


Figure 8. Location map (A) showing Latitude Hill relative to other nickel discoveries in the region and aeromagnetic image (B) showing the property boundary and location of high priority targets.

West Pilbara Gold and Base Metals Project, Western Australia

The 1,390km² West Pilbara Project (Figure 9) is located approximately 160km south-southwest of Karratha and has contiguous coverage of 90km of strike of prospective geology along the contact between the Ashburton and Hamersley Basins, referred to as the Paraburdoo Hinge Zone and is defined by regional fault/shear zones.

The region is under-explored for both gold and base metals and the south-west boundary of the property is approximately 8km from Northern Star Resources' (ASX: NST) multi-million-ounce Paulsens gold mine. The project is subject to a farm-in and joint venture whereby Chalice can earn up to a 51% interest in the non-iron rights from Red Hill Iron Limited (ASX: RHI) (and up to 70% if Red Hill elects not to contribute at this stage).

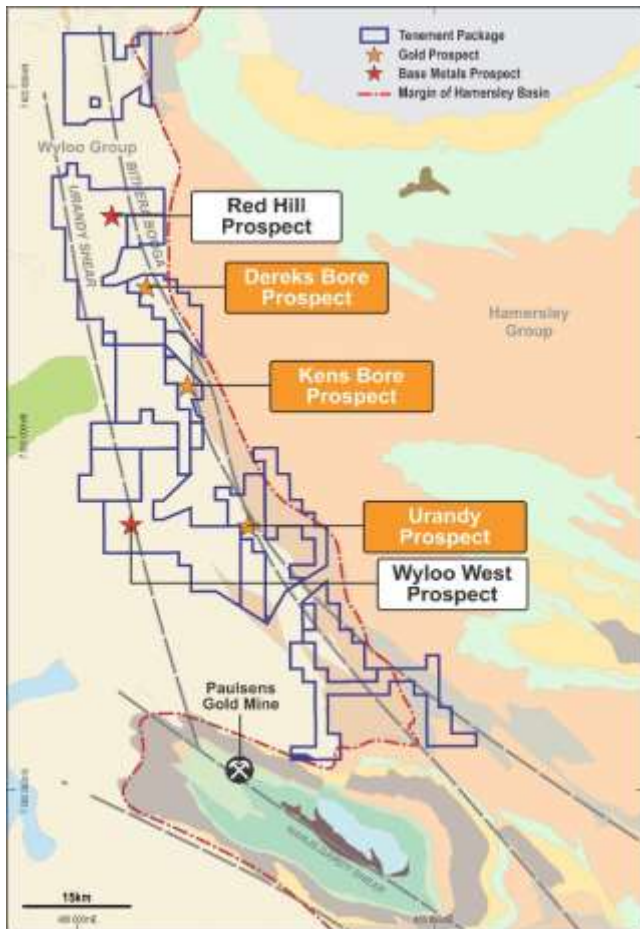


Figure 9: Geology and property map of the West Pilbara project



Figure 10: Hydrothermal Breccia with malachite and chalcocite mineralisation at Wyloo West Prospect

During the Quarter, a program of field reconnaissance and rock-chip sampling was undertaken across all high priority gold and base metal targets including Wyloo West, Dereks Bore, Kens Bore, G1 and Red Hill Copper prospects. A total of 130 rock-chip samples were collected from nine prospects with maximum values recorded of up to 12.3g/t Au and 29% Cu.

Based on the results of the recent field program three prospects (Wyloo West, Dereks Bore and Red Hill) are currently being surveyed by gradient array IP geophysics to cover identified targets which include either elevated Au and Cu rock chip sampling, anomalous soil geochemistry or historic Au drill intersections. Any new drill targets defined from the IP surveying will be included with the planned drilling programs at Ken's Bore, G1, and Wyloo East with drilling scheduled to commence in September.

Western Australia – Yilgarn Gold Projects (Chalice 100%)

Preliminary field evaluations have been carried out on three tenements (E70/4869, E77/2353 and E77/2354). Within E70/4869 (Gibb Rock), a significant (1.5km x 200m) east-west trending gold in soil anomaly up to 299ppb gold was confirmed and will require follow up RAB/AC drilling as an initial test of the target.

Detailed geological mapping and surface rock chip sampling within E77/2354 returned encouraging results with surface rock samples up to 3.9g/t Au at the Felsteads Find prospect. Drilling to test the Felsteads Find prospect at depth is being planned along with attaining all necessary land access and government approvals required prior to drilling.

3. AUSGOLD LIMITED SHARE PLACEMENT AND SALE OF THE DUMBLEYUNG PROJECT

During the Quarter, the Company agreed to subscribe to a share placement of 40 million shares in ASX-listed Ausgold Limited (ASX: AUC) ("Ausgold") at an issue price of 2.5 cents per share for a total of \$1.0 million ("the Placement"). The funds will predominantly be used to advance Ausgold's flagship Katanning Gold Project in Western Australia.

In addition to the Placement, Chalice has agreed to sell its Dumbleyung Project, which is located adjacent to the Katanning Gold Project, to Ausgold for 15 million shares (subject to a 12-month escrow) and 10 million unlisted share options that are exercisable at 3.5 cents per share within a 2-year period. The issue of the consideration shares and options to Chalice is subject to Ausgold shareholder approval scheduled for 3 August 2017. Chalice will also retain a 2 percent Net Smelter Royalty ("NSR") over the Dumbleyung Project.

Following completion of the Placement and the issue of the Dumbleyung consideration shares and options, Chalice will hold a ~12% interest in Ausgold (increasing to a ~14% interest in the event that the consideration options are exercised) on a fully diluted basis.

Ausgold's Katanning Gold Project is located 275km south-east of Perth, Western Australia where Ausgold holds a dominant ground position of approximately 4,031km² in a relatively under-explored greenstone belt that is prospective for Archaean gold deposits.

4. SHARE BUY-BACK

During the Quarter, Chalice continued to acquire shares pursuant to a discretionary on-market share buy-back of up to 28,271,080 ordinary shares as part of a capital management plan. From 4 July 2017, the buy-back ceased with a total 21,500,508 shares being purchased for \$3,774,267 (at an average price of 17.6 cents).

5. NYANZAGA PROJECT, TANZANIA – ENTITLEMENT TO PAYMENT UPON COMMERCIAL MINING

Following Chalice's merger with Sub-Sahara Resources NL in 2009, Chalice became entitled to a payment of A\$5 million upon commercial production at the Nyanzaga Project in Tanzania. Orecorp Limited (ASX: ORR), which is currently earning a 51% interest in Nyanzaga, has recently completed a positive Scoping Study.

6. GEOCRYSTAL LIMITED

The Company holds 9.68 million shares (~23%) in unlisted diamond explorer GeoCrystal Limited.

7. TENEMENT SCHEDULES

In accordance with ASX Listing Rule 5.3, please refer to Appendix 1 for listing of tenements.

8. DISCUSSION ON QUARTERLY CASH FLOW

Chalice's cash was A\$46.8 million at 30 June 2017 using a month end USD: AUD exchange rate of 0.769. In addition, Chalice held 6.9 million shares in First Mining Finance Corp (TSX: FF) with a market value of A\$4.6m at 30 June 2017. During the Quarter, the Company reduced its exposure to its holding in First Mining Finance Corp (TSX: FF) through the sale of 2.6 million shares for gross revenue of approximately A\$1.8 million.

During the Quarter, the Company spent A\$1.2 million (YTD: A\$3.2 million) on exploration and evaluation activities, A\$0.5 million (YTD: \$1.6 million) on administration and corporate and staff costs, A\$0.1 million (YTD: A\$1.3 million) on business development activities and A\$0.2 million (YTD: A\$3.8 million) under the on-market share buy-back facility.

Total cash inflows from the sale of First Mining Shares during the quarter totalled \$1.8 million (YTD: \$21.3 million) and total cash inflows from the sale of the Company's 9.7% interest in Oklo Resources Limited was \$5.6 million (YTD: \$5.6 million). During the Quarter, the Company subscribed to 40 million shares in Ausgold Limited for a total of \$1.0 million.

The impact of foreign exchange rates on the Company's USD cash balances was an exchange gain of A\$0.3 million for the quarter (YTD: exchange loss – A\$0.4 million).

Further details are available in the attached Appendix 5B.

A handwritten signature in blue ink, appearing to read "Tim Goyder".

TIM GOYDER
Managing Director
31 July 2017

For further information, please contact:
Tim Goyder
Chalice Gold Mines Limited
Telephone +61 9322 3960

For media inquiries, please contact:
Nicholas Read
Read Corporate
Telephone: +618 9388 1474

Competent Persons and Qualifying Persons

The information in this report that relates to Exploration Results in relation to the East Cadillac Gold Project, Kinebik Gold Project, West Pilbara Gold Project, and Yilgarn Gold Project is based on information compiled by Dr Kevin Frost BSc (Hons), PhD, who is a Member of the Australian Institute of Geoscientists. Dr Frost is a full-time employee of the company and has sufficient experience in the field of activity being reported to qualify as a Competent Person as defined in the 2012 edition of the Australasian Code for Reporting of Exploration Results, Minerals Resources and Ore Reserves, and is a Qualified Person under National Instrument 43-101 – 'Standards of Disclosure for Mineral Projects'. The Qualified Person has verified the information disclosed in this release. Dr Frost consents to the release of information in the form and context in which it appears here.

The information in this report that relates to the Warrego North, NT is extracted from the announcement entitled "Chalice discovers copper-gold mineralisation at Warrego North Project, NT" dated 16 June 2017. This announcement is available to view on the Company's website at www.chalicegold.com. The Company confirms that it is not aware of any new information or data that materially affects the information included in the original market announcement and that all material assumptions in the market announcement continue to apply and have not materially changed. The Company confirms that the form and context in which the Competent Person's and Qualifying Persons findings are presented have not been materially modified from the original market announcement.

Forward Looking Statements

This document may contain forward-looking information within the meaning of Canadian securities legislation and forward-looking statements within the meaning of the United States Private Securities Litigation Reform Act of 1995 (collectively, forward-looking statements). These forward-looking statements are made as of the date of this document and Chalice Gold Mines Limited (the Company) does not intend, and does not assume any obligation, to update these forward-looking statements.

Forward-looking statements relate to future events or future performance and reflect Company management's expectations or beliefs regarding future events and include, but are not limited to, the estimation of mineral reserve and mineral resources at the East Cadillac Gold Project, the realisation of mineral reserve estimates; the likelihood of exploration success including results of future geophysical surveys, drilling at the East Cadillac Gold Project, the Latitude Hill Project, the Warrego North Project and the West Pilbara Project and other exploration activities; the timing and costs of future exploration activities on the Company's exploration projects; the potential to define future mineral resources and, if successful at any of the Company's exploration projects, the potential viability of any mineral resource so defined; planned expenditures and budgets and the execution thereof; the timing and availability of drill results; potential sites for additional drilling, the future share price performance of First Mining Finance Corp and Ausgold Limited, the approval of Ausgold Limited shareholders to issue the consideration shares and options to Chalice, that general business and

economic conditions will not change in a materially adverse manner; the timing and amount of estimated future production, costs of production, capital expenditures, success of mining operations, environmental risks, unanticipated reclamation expenses, title disputes or claims and limitations on insurance coverage.

In certain cases, forward-looking statements can be identified by the use of words such as plans, planning, expects or does not expect, is expected, will, may, would, potential, budget, scheduled, estimates, forecasts, intends, anticipates or does not anticipate, or believes, occur, or be achieved, or variations of such words and phrases or statements that certain actions, events or results may, could, would, might or will be taken, occur or be achieved or the negative of these terms or comparable terminology. By their very nature forward-looking statements involve known and unknown risks, uncertainties and other factors which may cause the actual results, performance or achievements of the Company to be materially different from any future results, performance or achievements expressed or implied by the forward-looking statements. Such factors may include, among others, risks related to actual results of current exploration activities; changes in exploration programs based upon results of exploration; future prices of mineral resources; possible variations in mineral resources or ore reserves, grade or recovery rates; accidents, labour disputes and other risks of the mining industry; delays in obtaining governmental approvals or financing or in the completion of development or construction activities; as well as those factors detailed from time to time in the Company's interim and annual financial statements, all of which are filed and available for review on SEDAR at sedar.com. Although the Company has attempted to identify important factors that could cause actual actions, events or results to differ materially from those described in forward-looking statements, there may be other factors that cause actions, events or results not to be as anticipated, estimated or intended. There can be no assurance that forward-looking statements will prove to be accurate, as actual results and future events could differ materially from those anticipated in such statements. Accordingly, readers should not place undue reliance on forward-looking statements.

Appendix 1 – Tenement schedules

The following information is provided in accordance with ASX Listing Rule 5.3 for the quarter ended 30 June 2017:

1. Listing of tenements held:

Location	Project	Tenement No.	Registered Holder	Nature of interest
Western Australia		E37/1250	CGM (WA) Pty Ltd	100%
		E39/1914	CGM (WA) Pty Ltd	100%
		E77/2353	CGM (WA) Pty Ltd	100%
		E77/2354	CGM (WA) Pty Ltd	100%
		P39/5600	CGM (WA) Pty Ltd	100%
		P39/5601	CGM (WA) Pty Ltd	100%
		E39/1976	CGM (WA) Pty Ltd	100%
		P37/8702	CGM (WA) Pty Ltd	100%
		P37/8706	CGM (WA) Pty Ltd	100%
		P37/8707	CGM (WA) Pty Ltd	100%
		P37/8710	CGM (WA) Pty Ltd	100%
		P37/8711	CGM (WA) Pty Ltd	100%
		E70/4863	CGM (WA) Pty Ltd	100%
		E70/4864	CGM (WA) Pty Ltd	100%
		E70/4865	CGM (WA) Pty Ltd	100%
		E70/4866	CGM (WA) Pty Ltd	100%
		E70/4869	CGM (WA) Pty Ltd	100%
		P37/8703	CGM (WA) Pty Ltd	100%
		P37/8704	CGM (WA) Pty Ltd	100%
		P37/8705	CGM (WA) Pty Ltd	100%
		P37/8708	CGM (WA) Pty Ltd	100%
		E57/1050	CGM (WA) Pty Ltd	100%
		P37/8709	CGM (WA) Pty Ltd	100%
	West Pilbara	E08/1227	Red Hill Iron Limited – 40% API Management Pty Ltd – 60%	0% - farm-in agreement, right to earn up to 51% or 70% as applicable (in all minerals other than iron ore)
		E08/1283		
		E08/1289		
		E08/1293		
		E08/1294		
		E08/1295		
		E08/1430		
		E08/1473		
		E08/1516		
		E08/1537		
	Latitude Hill	ELA69/2817	Traka Resources Limited	0% - farm-in agreement, right to earn up to 51% or 70% as applicable
		ELA69/2610		
		ELA69/2592		
		ELA69/3421		
		ELA69/3399		
Northern Territory	Warrego North	EL23764	Meteoric Resources NL	0% - farm-in agreement, right to earn up to 51% interest or 70% as applicable
Canada	Refer appendix 2.			

2. Listing of tenements acquired (directly or beneficially) during the quarter:

Project	Claim Number	Registered Holder	Interest at beginning of quarter	Interest at end of quarter
East Cadillac	2491126	Chalice Gold Mines (Quebec) Inc.	0%	100%
East Cadillac	2491239	Chalice Gold Mines (Quebec) Inc.	0%	100%
East Cadillac	2491240	Chalice Gold Mines (Quebec) Inc.	0%	100%
East Cadillac	2491241	Chalice Gold Mines (Quebec) Inc.	0%	100%
East Cadillac	2491242	Chalice Gold Mines (Quebec) Inc.	0%	100%
East Cadillac	2491243	Chalice Gold Mines (Quebec) Inc.	0%	100%
East Cadillac	2491244	Chalice Gold Mines (Quebec) Inc.	0%	100%
East Cadillac	2491245	Chalice Gold Mines (Quebec) Inc.	0%	100%
East Cadillac	2491246	Chalice Gold Mines (Quebec) Inc.	0%	100%
East Cadillac	2491247	Chalice Gold Mines (Quebec) Inc.	0%	100%
East Cadillac	2491248	Chalice Gold Mines (Quebec) Inc.	0%	100%
East Cadillac	2491249	Chalice Gold Mines (Quebec) Inc.	0%	100%
East Cadillac	2491250	Chalice Gold Mines (Quebec) Inc.	0%	100%

3. Tenements relinquished, reduced or lapsed (directly or beneficially) during the quarter:

There were no tenements relinquished, reduced or lapsed during the quarter.

Appendix 2 - Tenements held (Canada)

Project	Claim Number	Registered Holder	Ownership interest
Kinebik	2448108	Chalice Gold Mines (Quebec) Inc.	100%
Kinebik	2448109	Chalice Gold Mines (Quebec) Inc.	100%
Kinebik	2448110	Chalice Gold Mines (Quebec) Inc.	100%
Kinebik	2448111	Chalice Gold Mines (Quebec) Inc.	100%
Kinebik	2448112	Chalice Gold Mines (Quebec) Inc.	100%
Kinebik	2448113	Chalice Gold Mines (Quebec) Inc.	100%
Kinebik	2448114	Chalice Gold Mines (Quebec) Inc.	100%
Kinebik	2448115	Chalice Gold Mines (Quebec) Inc.	100%
Kinebik	2448116	Chalice Gold Mines (Quebec) Inc.	100%
Kinebik	2448117	Chalice Gold Mines (Quebec) Inc.	100%
Kinebik	2448118	Chalice Gold Mines (Quebec) Inc.	100%
Kinebik	2448119	Chalice Gold Mines (Quebec) Inc.	100%
Kinebik	2448120	Chalice Gold Mines (Quebec) Inc.	100%
Kinebik	2448121	Chalice Gold Mines (Quebec) Inc.	100%
Kinebik	2448122	Chalice Gold Mines (Quebec) Inc.	100%
Kinebik	2448123	Chalice Gold Mines (Quebec) Inc.	100%
Kinebik	2448124	Chalice Gold Mines (Quebec) Inc.	100%
Kinebik	2448125	Chalice Gold Mines (Quebec) Inc.	100%
Kinebik	2448126	Chalice Gold Mines (Quebec) Inc.	100%
Kinebik	2448127	Chalice Gold Mines (Quebec) Inc.	100%
Kinebik	2448128	Chalice Gold Mines (Quebec) Inc.	100%
Kinebik	2448129	Chalice Gold Mines (Quebec) Inc.	100%
Kinebik	2448130	Chalice Gold Mines (Quebec) Inc.	100%
Kinebik	2448131	Chalice Gold Mines (Quebec) Inc.	100%
Kinebik	2448132	Chalice Gold Mines (Quebec) Inc.	100%
Kinebik	2448133	Chalice Gold Mines (Quebec) Inc.	100%
Kinebik	2448134	Chalice Gold Mines (Quebec) Inc.	100%
Kinebik	2448135	Chalice Gold Mines (Quebec) Inc.	100%
Kinebik	2448136	Chalice Gold Mines (Quebec) Inc.	100%
Kinebik	2448137	Chalice Gold Mines (Quebec) Inc.	100%
Kinebik	2448138	Chalice Gold Mines (Quebec) Inc.	100%
Kinebik	2448139	Chalice Gold Mines (Quebec) Inc.	100%
Kinebik	2448140	Chalice Gold Mines (Quebec) Inc.	100%
Kinebik	2448141	Chalice Gold Mines (Quebec) Inc.	100%
Kinebik	2448142	Chalice Gold Mines (Quebec) Inc.	100%
Kinebik	2448143	Chalice Gold Mines (Quebec) Inc.	100%
Kinebik	2448144	Chalice Gold Mines (Quebec) Inc.	100%
Kinebik	2448145	Chalice Gold Mines (Quebec) Inc.	100%
Kinebik	2448146	Chalice Gold Mines (Quebec) Inc.	100%
Kinebik	2448147	Chalice Gold Mines (Quebec) Inc.	100%
Kinebik	2448148	Chalice Gold Mines (Quebec) Inc.	100%
Kinebik	2448149	Chalice Gold Mines (Quebec) Inc.	100%
Kinebik	2448150	Chalice Gold Mines (Quebec) Inc.	100%
Kinebik	2448151	Chalice Gold Mines (Quebec) Inc.	100%
Kinebik	2448152	Chalice Gold Mines (Quebec) Inc.	100%
Kinebik	2448153	Chalice Gold Mines (Quebec) Inc.	100%
Kinebik	2448154	Chalice Gold Mines (Quebec) Inc.	100%
Kinebik	2448155	Chalice Gold Mines (Quebec) Inc.	100%
Kinebik	2448156	Chalice Gold Mines (Quebec) Inc.	100%
Kinebik	2448157	Chalice Gold Mines (Quebec) Inc.	100%
Kinebik	2448158	Chalice Gold Mines (Quebec) Inc.	100%
Kinebik	2448159	Chalice Gold Mines (Quebec) Inc.	100%
Kinebik	2448160	Chalice Gold Mines (Quebec) Inc.	100%
Kinebik	2448161	Chalice Gold Mines (Quebec) Inc.	100%
Kinebik	2448162	Chalice Gold Mines (Quebec) Inc.	100%
Kinebik	2448163	Chalice Gold Mines (Quebec) Inc.	100%

Project	Claim Number	Registered Holder	Ownership interest
Kinebik	2448164	Chalice Gold Mines (Quebec) Inc.	100%
Kinebik	2448165	Chalice Gold Mines (Quebec) Inc.	100%
Kinebik	2448166	Chalice Gold Mines (Quebec) Inc.	100%
Kinebik	2448167	Chalice Gold Mines (Quebec) Inc.	100%
Kinebik	2448168	Chalice Gold Mines (Quebec) Inc.	100%
Kinebik	2448169	Chalice Gold Mines (Quebec) Inc.	100%
Kinebik	2448170	Chalice Gold Mines (Quebec) Inc.	100%
Kinebik	2448171	Chalice Gold Mines (Quebec) Inc.	100%
Kinebik	2448172	Chalice Gold Mines (Quebec) Inc.	100%
Kinebik	2448173	Chalice Gold Mines (Quebec) Inc.	100%
Kinebik	2448174	Chalice Gold Mines (Quebec) Inc.	100%
Kinebik	2448175	Chalice Gold Mines (Quebec) Inc.	100%
Kinebik	2448176	Chalice Gold Mines (Quebec) Inc.	100%
Kinebik	2448177	Chalice Gold Mines (Quebec) Inc.	100%
Kinebik	2448178	Chalice Gold Mines (Quebec) Inc.	100%
Kinebik	2448179	Chalice Gold Mines (Quebec) Inc.	100%
Kinebik	2448180	Chalice Gold Mines (Quebec) Inc.	100%
Kinebik	2448181	Chalice Gold Mines (Quebec) Inc.	100%
Kinebik	2448182	Chalice Gold Mines (Quebec) Inc.	100%
Kinebik	2448183	Chalice Gold Mines (Quebec) Inc.	100%
Kinebik	2448184	Chalice Gold Mines (Quebec) Inc.	100%
Kinebik	2448185	Chalice Gold Mines (Quebec) Inc.	100%
Kinebik	2448186	Chalice Gold Mines (Quebec) Inc.	100%
Kinebik	2448187	Chalice Gold Mines (Quebec) Inc.	100%
Kinebik	2448188	Chalice Gold Mines (Quebec) Inc.	100%
Kinebik	2448189	Chalice Gold Mines (Quebec) Inc.	100%
Kinebik	2448190	Chalice Gold Mines (Quebec) Inc.	100%
Kinebik	2448191	Chalice Gold Mines (Quebec) Inc.	100%
Kinebik	2448192	Chalice Gold Mines (Quebec) Inc.	100%
Kinebik	2448193	Chalice Gold Mines (Quebec) Inc.	100%
Kinebik	2448194	Chalice Gold Mines (Quebec) Inc.	100%
Kinebik	2448195	Chalice Gold Mines (Quebec) Inc.	100%
Kinebik	2448196	Chalice Gold Mines (Quebec) Inc.	100%
Kinebik	2448197	Chalice Gold Mines (Quebec) Inc.	100%
Kinebik	2448198	Chalice Gold Mines (Quebec) Inc.	100%
Kinebik	2448199	Chalice Gold Mines (Quebec) Inc.	100%
Kinebik	2448200	Chalice Gold Mines (Quebec) Inc.	100%
Kinebik	2448201	Chalice Gold Mines (Quebec) Inc.	100%
Kinebik	2448202	Chalice Gold Mines (Quebec) Inc.	100%
Kinebik	2448203	Chalice Gold Mines (Quebec) Inc.	100%
Kinebik	2448204	Chalice Gold Mines (Quebec) Inc.	100%
Kinebik	2448205	Chalice Gold Mines (Quebec) Inc.	100%
Kinebik	2448206	Chalice Gold Mines (Quebec) Inc.	100%
Kinebik	2448207	Chalice Gold Mines (Quebec) Inc.	100%
Kinebik	2448409	Chalice Gold Mines (Quebec) Inc.	100%
Kinebik	2448410	Chalice Gold Mines (Quebec) Inc.	100%
Kinebik	2448411	Chalice Gold Mines (Quebec) Inc.	100%
Kinebik	2448412	Chalice Gold Mines (Quebec) Inc.	100%
Kinebik	2448413	Chalice Gold Mines (Quebec) Inc.	100%
Kinebik	2448414	Chalice Gold Mines (Quebec) Inc.	100%
Kinebik	2448415	Chalice Gold Mines (Quebec) Inc.	100%
Kinebik	2448416	Chalice Gold Mines (Quebec) Inc.	100%
Kinebik	2448417	Chalice Gold Mines (Quebec) Inc.	100%
Kinebik	2448418	Chalice Gold Mines (Quebec) Inc.	100%
Kinebik	2448419	Chalice Gold Mines (Quebec) Inc.	100%
Kinebik	2448420	Chalice Gold Mines (Quebec) Inc.	100%
Kinebik	2448421	Chalice Gold Mines (Quebec) Inc.	100%
Kinebik	2448422	Chalice Gold Mines (Quebec) Inc.	100%

Project	Claim Number	Registered Holder	Ownership interest
Kinebik	2448423	Chalice Gold Mines (Quebec) Inc.	100%
Kinebik	2448424	Chalice Gold Mines (Quebec) Inc.	100%
Kinebik	2448425	Chalice Gold Mines (Quebec) Inc.	100%
Kinebik	2448426	Chalice Gold Mines (Quebec) Inc.	100%
Kinebik	2448427	Chalice Gold Mines (Quebec) Inc.	100%
Kinebik	2448428	Chalice Gold Mines (Quebec) Inc.	100%
Kinebik	2448429	Chalice Gold Mines (Quebec) Inc.	100%
Kinebik	2448430	Chalice Gold Mines (Quebec) Inc.	100%
Kinebik	2448431	Chalice Gold Mines (Quebec) Inc.	100%
Kinebik	2448432	Chalice Gold Mines (Quebec) Inc.	100%
Kinebik	2448433	Chalice Gold Mines (Quebec) Inc.	100%
Kinebik	2448434	Chalice Gold Mines (Quebec) Inc.	100%
Kinebik	2448435	Chalice Gold Mines (Quebec) Inc.	100%
Kinebik	2448436	Chalice Gold Mines (Quebec) Inc.	100%
Kinebik	2448437	Chalice Gold Mines (Quebec) Inc.	100%
Kinebik	2448438	Chalice Gold Mines (Quebec) Inc.	100%
Kinebik	2448439	Chalice Gold Mines (Quebec) Inc.	100%
Kinebik	2448440	Chalice Gold Mines (Quebec) Inc.	100%
Kinebik	2448441	Chalice Gold Mines (Quebec) Inc.	100%
Kinebik	2448442	Chalice Gold Mines (Quebec) Inc.	100%
Kinebik	2448443	Chalice Gold Mines (Quebec) Inc.	100%
Kinebik	2448444	Chalice Gold Mines (Quebec) Inc.	100%
Kinebik	2448445	Chalice Gold Mines (Quebec) Inc.	100%
Kinebik	2448446	Chalice Gold Mines (Quebec) Inc.	100%
Kinebik	2448447	Chalice Gold Mines (Quebec) Inc.	100%
Kinebik	2448448	Chalice Gold Mines (Quebec) Inc.	100%
Kinebik	2448449	Chalice Gold Mines (Quebec) Inc.	100%
Kinebik	2448450	Chalice Gold Mines (Quebec) Inc.	100%
Kinebik	2448451	Chalice Gold Mines (Quebec) Inc.	100%
Kinebik	2448452	Chalice Gold Mines (Quebec) Inc.	100%
Kinebik	2448453	Chalice Gold Mines (Quebec) Inc.	100%
Kinebik	2448454	Chalice Gold Mines (Quebec) Inc.	100%
Kinebik	2448455	Chalice Gold Mines (Quebec) Inc.	100%
Kinebik	2448456	Chalice Gold Mines (Quebec) Inc.	100%
Kinebik	2448457	Chalice Gold Mines (Quebec) Inc.	100%
Kinebik	2448458	Chalice Gold Mines (Quebec) Inc.	100%
Kinebik	2448459	Chalice Gold Mines (Quebec) Inc.	100%
Kinebik	2448460	Chalice Gold Mines (Quebec) Inc.	100%
Kinebik	2448461	Chalice Gold Mines (Quebec) Inc.	100%
Kinebik	2448462	Chalice Gold Mines (Quebec) Inc.	100%
Kinebik	2448463	Chalice Gold Mines (Quebec) Inc.	100%
Kinebik	2448464	Chalice Gold Mines (Quebec) Inc.	100%
Kinebik	2448465	Chalice Gold Mines (Quebec) Inc.	100%
Kinebik	2448466	Chalice Gold Mines (Quebec) Inc.	100%
Kinebik	2448467	Chalice Gold Mines (Quebec) Inc.	100%
Kinebik	2448468	Chalice Gold Mines (Quebec) Inc.	100%
Kinebik	2448469	Chalice Gold Mines (Quebec) Inc.	100%
Kinebik	2448470	Chalice Gold Mines (Quebec) Inc.	100%
Kinebik	2448471	Chalice Gold Mines (Quebec) Inc.	100%
Kinebik	2448472	Chalice Gold Mines (Quebec) Inc.	100%
Kinebik	2448473	Chalice Gold Mines (Quebec) Inc.	100%
Kinebik	2448474	Chalice Gold Mines (Quebec) Inc.	100%
Kinebik	2448475	Chalice Gold Mines (Quebec) Inc.	100%
Kinebik	2448476	Chalice Gold Mines (Quebec) Inc.	100%
Kinebik	2448477	Chalice Gold Mines (Quebec) Inc.	100%
Kinebik	2448478	Chalice Gold Mines (Quebec) Inc.	100%
Kinebik	2448479	Chalice Gold Mines (Quebec) Inc.	100%
Kinebik	2448480	Chalice Gold Mines (Quebec) Inc.	100%

Project	Claim Number	Registered Holder	Ownership interest
Kinebik	2448481	Chalice Gold Mines (Quebec) Inc.	100%
Kinebik	2448482	Chalice Gold Mines (Quebec) Inc.	100%
Kinebik	2448483	Chalice Gold Mines (Quebec) Inc.	100%
Kinebik	2448484	Chalice Gold Mines (Quebec) Inc.	100%
Kinebik	2448485	Chalice Gold Mines (Quebec) Inc.	100%
Kinebik	2448486	Chalice Gold Mines (Quebec) Inc.	100%
Kinebik	2448487	Chalice Gold Mines (Quebec) Inc.	100%
Kinebik	2448488	Chalice Gold Mines (Quebec) Inc.	100%
Kinebik	2448489	Chalice Gold Mines (Quebec) Inc.	100%
Kinebik	2448490	Chalice Gold Mines (Quebec) Inc.	100%
Kinebik	2448491	Chalice Gold Mines (Quebec) Inc.	100%
Kinebik	2448492	Chalice Gold Mines (Quebec) Inc.	100%
Kinebik	2448493	Chalice Gold Mines (Quebec) Inc.	100%
Kinebik	2448494	Chalice Gold Mines (Quebec) Inc.	100%
Kinebik	2448495	Chalice Gold Mines (Quebec) Inc.	100%
Kinebik	2448496	Chalice Gold Mines (Quebec) Inc.	100%
Kinebik	2448497	Chalice Gold Mines (Quebec) Inc.	100%
Kinebik	2449277	Chalice Gold Mines (Quebec) Inc.	100%
Kinebik	2449278	Chalice Gold Mines (Quebec) Inc.	100%
Kinebik	2449279	Chalice Gold Mines (Quebec) Inc.	100%
Kinebik	2449280	Chalice Gold Mines (Quebec) Inc.	100%
Kinebik	2449281	Chalice Gold Mines (Quebec) Inc.	100%
Kinebik	2449282	Chalice Gold Mines (Quebec) Inc.	100%
Kinebik	2449283	Chalice Gold Mines (Quebec) Inc.	100%
Kinebik	2449284	Chalice Gold Mines (Quebec) Inc.	100%
Kinebik	2449285	Chalice Gold Mines (Quebec) Inc.	100%
Kinebik	2449286	Chalice Gold Mines (Quebec) Inc.	100%
Kinebik	2449287	Chalice Gold Mines (Quebec) Inc.	100%
Kinebik	2449288	Chalice Gold Mines (Quebec) Inc.	100%
Kinebik	2449289	Chalice Gold Mines (Quebec) Inc.	100%
Kinebik	2449290	Chalice Gold Mines (Quebec) Inc.	100%
Kinebik	2449291	Chalice Gold Mines (Quebec) Inc.	100%
Kinebik	2449292	Chalice Gold Mines (Quebec) Inc.	100%
Kinebik	2449293	Chalice Gold Mines (Quebec) Inc.	100%
Kinebik	2449294	Chalice Gold Mines (Quebec) Inc.	100%
Kinebik	2449295	Chalice Gold Mines (Quebec) Inc.	100%
Kinebik	2449296	Chalice Gold Mines (Quebec) Inc.	100%
Kinebik	2449297	Chalice Gold Mines (Quebec) Inc.	100%
Kinebik	2449298	Chalice Gold Mines (Quebec) Inc.	100%
Kinebik	2449299	Chalice Gold Mines (Quebec) Inc.	100%
Kinebik	2449300	Chalice Gold Mines (Quebec) Inc.	100%
Kinebik	2449301	Chalice Gold Mines (Quebec) Inc.	100%
Kinebik	2449302	Chalice Gold Mines (Quebec) Inc.	100%
Kinebik	2449303	Chalice Gold Mines (Quebec) Inc.	100%
Kinebik	2449304	Chalice Gold Mines (Quebec) Inc.	100%
Kinebik	2449305	Chalice Gold Mines (Quebec) Inc.	100%
Kinebik	2449306	Chalice Gold Mines (Quebec) Inc.	100%
Kinebik	2449307	Chalice Gold Mines (Quebec) Inc.	100%
Kinebik	2449308	Chalice Gold Mines (Quebec) Inc.	100%
Kinebik	2449309	Chalice Gold Mines (Quebec) Inc.	100%
Kinebik	2449310	Chalice Gold Mines (Quebec) Inc.	100%
Kinebik	2449311	Chalice Gold Mines (Quebec) Inc.	100%
Kinebik	2449312	Chalice Gold Mines (Quebec) Inc.	100%
Kinebik	2449313	Chalice Gold Mines (Quebec) Inc.	100%
Kinebik	2449314	Chalice Gold Mines (Quebec) Inc.	100%
Kinebik	2449315	Chalice Gold Mines (Quebec) Inc.	100%
Kinebik	2449316	Chalice Gold Mines (Quebec) Inc.	100%
Kinebik	2449317	Chalice Gold Mines (Quebec) Inc.	100%

Project	Claim Number	Registered Holder	Ownership interest
Kinebik	2449318	Chalice Gold Mines (Quebec) Inc.	100%
Kinebik	2449319	Chalice Gold Mines (Quebec) Inc.	100%
Kinebik	2449320	Chalice Gold Mines (Quebec) Inc.	100%
Kinebik	2449321	Chalice Gold Mines (Quebec) Inc.	100%
Kinebik	2449322	Chalice Gold Mines (Quebec) Inc.	100%
Kinebik	2449323	Chalice Gold Mines (Quebec) Inc.	100%
Kinebik	2449324	Chalice Gold Mines (Quebec) Inc.	100%
Kinebik	2449325	Chalice Gold Mines (Quebec) Inc.	100%
Kinebik	2449326	Chalice Gold Mines (Quebec) Inc.	100%
Kinebik	2449327	Chalice Gold Mines (Quebec) Inc.	100%
Kinebik	2449328	Chalice Gold Mines (Quebec) Inc.	100%
Kinebik	2449329	Chalice Gold Mines (Quebec) Inc.	100%
Kinebik	2449330	Chalice Gold Mines (Quebec) Inc.	100%
Kinebik	2449331	Chalice Gold Mines (Quebec) Inc.	100%
Kinebik	2449332	Chalice Gold Mines (Quebec) Inc.	100%
Kinebik	2449333	Chalice Gold Mines (Quebec) Inc.	100%
Kinebik	2449334	Chalice Gold Mines (Quebec) Inc.	100%
Kinebik	2449335	Chalice Gold Mines (Quebec) Inc.	100%
Kinebik	2449336	Chalice Gold Mines (Quebec) Inc.	100%
Kinebik	2449337	Chalice Gold Mines (Quebec) Inc.	100%
Kinebik	2449338	Chalice Gold Mines (Quebec) Inc.	100%
Kinebik	2449339	Chalice Gold Mines (Quebec) Inc.	100%
Kinebik	2449340	Chalice Gold Mines (Quebec) Inc.	100%
Kinebik	2449341	Chalice Gold Mines (Quebec) Inc.	100%
Kinebik	2449342	Chalice Gold Mines (Quebec) Inc.	100%
Kinebik	2449343	Chalice Gold Mines (Quebec) Inc.	100%
Kinebik	2449344	Chalice Gold Mines (Quebec) Inc.	100%
Kinebik	2449345	Chalice Gold Mines (Quebec) Inc.	100%
Kinebik	2449346	Chalice Gold Mines (Quebec) Inc.	100%
Kinebik	2449347	Chalice Gold Mines (Quebec) Inc.	100%
Kinebik	2449348	Chalice Gold Mines (Quebec) Inc.	100%
Kinebik	2449349	Chalice Gold Mines (Quebec) Inc.	100%
Kinebik	2449350	Chalice Gold Mines (Quebec) Inc.	100%
Kinebik	2449351	Chalice Gold Mines (Quebec) Inc.	100%
Kinebik	2449352	Chalice Gold Mines (Quebec) Inc.	100%
Kinebik	2449353	Chalice Gold Mines (Quebec) Inc.	100%
Kinebik	2449354	Chalice Gold Mines (Quebec) Inc.	100%
Kinebik	2449355	Chalice Gold Mines (Quebec) Inc.	100%
Kinebik	2449356	Chalice Gold Mines (Quebec) Inc.	100%
Kinebik	2449357	Chalice Gold Mines (Quebec) Inc.	100%
Kinebik	2449358	Chalice Gold Mines (Quebec) Inc.	100%
Kinebik	2449359	Chalice Gold Mines (Quebec) Inc.	100%
Kinebik	2449360	Chalice Gold Mines (Quebec) Inc.	100%
Kinebik	2449361	Chalice Gold Mines (Quebec) Inc.	100%
Kinebik	2449362	Chalice Gold Mines (Quebec) Inc.	100%
Kinebik	2449363	Chalice Gold Mines (Quebec) Inc.	100%
Kinebik	2449364	Chalice Gold Mines (Quebec) Inc.	100%
Kinebik	2449365	Chalice Gold Mines (Quebec) Inc.	100%
Kinebik	2449366	Chalice Gold Mines (Quebec) Inc.	100%
Kinebik	2449367	Chalice Gold Mines (Quebec) Inc.	100%
Kinebik	2449368	Chalice Gold Mines (Quebec) Inc.	100%
Kinebik	2449369	Chalice Gold Mines (Quebec) Inc.	100%
Kinebik	2449370	Chalice Gold Mines (Quebec) Inc.	100%
Kinebik	2449371	Chalice Gold Mines (Quebec) Inc.	100%
Kinebik	2449372	Chalice Gold Mines (Quebec) Inc.	100%
Kinebik	2449373	Chalice Gold Mines (Quebec) Inc.	100%
Kinebik	2449374	Chalice Gold Mines (Quebec) Inc.	100%
Kinebik	2449375	Chalice Gold Mines (Quebec) Inc.	100%

Project	Claim Number	Registered Holder	Ownership interest
Kinebik	2454112	Chalice Gold Mines (Quebec) Inc.	100%
Kinebik	2454113	Chalice Gold Mines (Quebec) Inc.	100%
Kinebik	2454308	Chalice Gold Mines (Quebec) Inc.	100%
Kinebik	2454309	Chalice Gold Mines (Quebec) Inc.	100%
Kinebik	2454310	Chalice Gold Mines (Quebec) Inc.	100%
Kinebik	2454311	Chalice Gold Mines (Quebec) Inc.	100%
Kinebik	2454312	Chalice Gold Mines (Quebec) Inc.	100%
Kinebik	2454313	Chalice Gold Mines (Quebec) Inc.	100%
Kinebik	2454314	Chalice Gold Mines (Quebec) Inc.	100%
Kinebik	2454315	Chalice Gold Mines (Quebec) Inc.	100%
Kinebik	2454316	Chalice Gold Mines (Quebec) Inc.	100%
Kinebik	2454317	Chalice Gold Mines (Quebec) Inc.	100%
Kinebik	2454318	Chalice Gold Mines (Quebec) Inc.	100%
Kinebik	2454319	Chalice Gold Mines (Quebec) Inc.	100%
Kinebik	2454320	Chalice Gold Mines (Quebec) Inc.	100%
Kinebik	2454863	Chalice Gold Mines (Quebec) Inc.	100%
Kinebik	2454864	Chalice Gold Mines (Quebec) Inc.	100%
Kinebik	2454865	Chalice Gold Mines (Quebec) Inc.	100%
Kinebik	2454866	Chalice Gold Mines (Quebec) Inc.	100%
Kinebik	2454867	Chalice Gold Mines (Quebec) Inc.	100%
Kinebik	2466152	Chalice Gold Mines (Quebec) Inc.	100%
Kinebik	2466153	Chalice Gold Mines (Quebec) Inc.	100%
Kinebik	2466154	Chalice Gold Mines (Quebec) Inc.	100%
Kinebik	2466155	Chalice Gold Mines (Quebec) Inc.	100%
Kinebik	2466156	Chalice Gold Mines (Quebec) Inc.	100%
Kinebik	2466157	Chalice Gold Mines (Quebec) Inc.	100%
Kinebik	2466158	Chalice Gold Mines (Quebec) Inc.	100%
Kinebik	2466159	Chalice Gold Mines (Quebec) Inc.	100%
Kinebik	2466160	Chalice Gold Mines (Quebec) Inc.	100%
Kinebik	2466161	Chalice Gold Mines (Quebec) Inc.	100%
Kinebik	2466162	Chalice Gold Mines (Quebec) Inc.	100%
Kinebik	2466163	Chalice Gold Mines (Quebec) Inc.	100%
Kinebik	2466164	Chalice Gold Mines (Quebec) Inc.	100%
Kinebik	2466165	Chalice Gold Mines (Quebec) Inc.	100%
Kinebik	2466166	Chalice Gold Mines (Quebec) Inc.	100%
Kinebik	2466167	Chalice Gold Mines (Quebec) Inc.	100%
Kinebik	2466168	Chalice Gold Mines (Quebec) Inc.	100%
Kinebik	2466169	Chalice Gold Mines (Quebec) Inc.	100%
Kinebik	2466170	Chalice Gold Mines (Quebec) Inc.	100%
Kinebik	2466171	Chalice Gold Mines (Quebec) Inc.	100%
Kinebik	2466172	Chalice Gold Mines (Quebec) Inc.	100%
Kinebik	2466173	Chalice Gold Mines (Quebec) Inc.	100%
Kinebik	2466174	Chalice Gold Mines (Quebec) Inc.	100%
Kinebik	2466175	Chalice Gold Mines (Quebec) Inc.	100%
Kinebik	2466176	Chalice Gold Mines (Quebec) Inc.	100%
Kinebik	2468010	Chalice Gold Mines (Quebec) Inc.	100%
Kinebik	2468011	Chalice Gold Mines (Quebec) Inc.	100%
Kinebik	2468012	Chalice Gold Mines (Quebec) Inc.	100%
Kinebik	2468013	Chalice Gold Mines (Quebec) Inc.	100%
Kinebik	2470442	Chalice Gold Mines (Quebec) Inc.	100%
Kinebik	2470443	Chalice Gold Mines (Quebec) Inc.	100%
Kinebik	2470444	Chalice Gold Mines (Quebec) Inc.	100%
Kinebik	2470445	Chalice Gold Mines (Quebec) Inc.	100%
Kinebik	2470446	Chalice Gold Mines (Quebec) Inc.	100%
Kinebik	2470447	Chalice Gold Mines (Quebec) Inc.	100%
Kinebik	2470448	Chalice Gold Mines (Quebec) Inc.	100%
Kinebik	2470449	Chalice Gold Mines (Quebec) Inc.	100%
Kinebik	2470450	Chalice Gold Mines (Quebec) Inc.	100%

Project	Claim Number	Registered Holder	Ownership interest
Kinebik	2470451	Chalice Gold Mines (Quebec) Inc.	100%
Kinebik	2470452	Chalice Gold Mines (Quebec) Inc.	100%
Kinebik	2470453	Chalice Gold Mines (Quebec) Inc.	100%
Kinebik	2470454	Chalice Gold Mines (Quebec) Inc.	100%
Kinebik	2470455	Chalice Gold Mines (Quebec) Inc.	100%
Kinebik	2470456	Chalice Gold Mines (Quebec) Inc.	100%
Kinebik	2470457	Chalice Gold Mines (Quebec) Inc.	100%
Kinebik	2470458	Chalice Gold Mines (Quebec) Inc.	100%
Kinebik	2470459	Chalice Gold Mines (Quebec) Inc.	100%
Kinebik	2470460	Chalice Gold Mines (Quebec) Inc.	100%
East Cadillac	2461488	Chalice Gold Mines (Quebec) Inc.	100%
East Cadillac	2461489	Chalice Gold Mines (Quebec) Inc.	100%
East Cadillac	2461490	Chalice Gold Mines (Quebec) Inc.	100%
East Cadillac	2461491	Chalice Gold Mines (Quebec) Inc.	100%
East Cadillac	2461492	Chalice Gold Mines (Quebec) Inc.	100%
East Cadillac	2461493	Chalice Gold Mines (Quebec) Inc.	100%
East Cadillac	2461494	Chalice Gold Mines (Quebec) Inc.	100%
East Cadillac	2461495	Chalice Gold Mines (Quebec) Inc.	100%
East Cadillac	2468029	Chalice Gold Mines (Quebec) Inc.	100%
East Cadillac	2468030	Chalice Gold Mines (Quebec) Inc.	100%
East Cadillac	2468031	Chalice Gold Mines (Quebec) Inc.	100%
East Cadillac	2468032	Chalice Gold Mines (Quebec) Inc.	100%
East Cadillac	2468033	Chalice Gold Mines (Quebec) Inc.	100%
East Cadillac	2468034	Chalice Gold Mines (Quebec) Inc.	100%
East Cadillac	2468035	Chalice Gold Mines (Quebec) Inc.	100%
East Cadillac	2468036	Chalice Gold Mines (Quebec) Inc.	100%
East Cadillac	2468037	Chalice Gold Mines (Quebec) Inc.	100%
East Cadillac	2468038	Chalice Gold Mines (Quebec) Inc.	100%
East Cadillac	2468039	Chalice Gold Mines (Quebec) Inc.	100%
East Cadillac	2468040	Chalice Gold Mines (Quebec) Inc.	100%
East Cadillac	2468041	Chalice Gold Mines (Quebec) Inc.	100%
East Cadillac	2468042	Chalice Gold Mines (Quebec) Inc.	100%
East Cadillac	2468043	Chalice Gold Mines (Quebec) Inc.	100%
East Cadillac	2481223	Chalice Gold Mines (Quebec) Inc.	100%
East Cadillac	2481224	Chalice Gold Mines (Quebec) Inc.	100%
East Cadillac	2481225	Chalice Gold Mines (Quebec) Inc.	100%
East Cadillac	2481226	Chalice Gold Mines (Quebec) Inc.	100%
East Cadillac	2481227	Chalice Gold Mines (Quebec) Inc.	100%
East Cadillac	2481228	Chalice Gold Mines (Quebec) Inc.	100%
East Cadillac	2481229	Chalice Gold Mines (Quebec) Inc.	100%
East Cadillac	2481230	Chalice Gold Mines (Quebec) Inc.	100%
East Cadillac	2481231	Chalice Gold Mines (Quebec) Inc.	100%
East Cadillac	2481232	Chalice Gold Mines (Quebec) Inc.	100%
East Cadillac	2481233	Chalice Gold Mines (Quebec) Inc.	100%
East Cadillac	2481234	Chalice Gold Mines (Quebec) Inc.	100%
East Cadillac	2481235	Chalice Gold Mines (Quebec) Inc.	100%
East Cadillac	2481236	Chalice Gold Mines (Quebec) Inc.	100%
East Cadillac	2481237	Chalice Gold Mines (Quebec) Inc.	100%
East Cadillac	2481238	Chalice Gold Mines (Quebec) Inc.	100%
East Cadillac	2481239	Chalice Gold Mines (Quebec) Inc.	100%
East Cadillac	2481240	Chalice Gold Mines (Quebec) Inc.	100%
East Cadillac	2481241	Chalice Gold Mines (Quebec) Inc.	100%
East Cadillac	2481242	Chalice Gold Mines (Quebec) Inc.	100%
East Cadillac	2481243	Chalice Gold Mines (Quebec) Inc.	100%
East Cadillac	2481244	Chalice Gold Mines (Quebec) Inc.	100%
East Cadillac	2481245	Chalice Gold Mines (Quebec) Inc.	100%
East Cadillac	2481246	Chalice Gold Mines (Quebec) Inc.	100%
East Cadillac	2481247	Chalice Gold Mines (Quebec) Inc.	100%

Project	Claim Number	Registered Holder	Ownership interest
East Cadillac	2481248	Chalice Gold Mines (Quebec) Inc.	100%
East Cadillac	2481249	Chalice Gold Mines (Quebec) Inc.	100%
East Cadillac	2481250	Chalice Gold Mines (Quebec) Inc.	100%
East Cadillac	2481251	Chalice Gold Mines (Quebec) Inc.	100%
East Cadillac	2481252	Chalice Gold Mines (Quebec) Inc.	100%
East Cadillac	2481253	Chalice Gold Mines (Quebec) Inc.	100%
East Cadillac	2481254	Chalice Gold Mines (Quebec) Inc.	100%
East Cadillac	2481255	Chalice Gold Mines (Quebec) Inc.	100%
East Cadillac	2481256	Chalice Gold Mines (Quebec) Inc.	100%
East Cadillac	2481257	Chalice Gold Mines (Quebec) Inc.	100%
East Cadillac	2481258	Chalice Gold Mines (Quebec) Inc.	100%
East Cadillac	2481259	Chalice Gold Mines (Quebec) Inc.	100%
East Cadillac	2481260	Chalice Gold Mines (Quebec) Inc.	100%
East Cadillac	2481261	Chalice Gold Mines (Quebec) Inc.	100%
East Cadillac	2481262	Chalice Gold Mines (Quebec) Inc.	100%
East Cadillac	2481263	Chalice Gold Mines (Quebec) Inc.	100%
East Cadillac	2481264	Chalice Gold Mines (Quebec) Inc.	100%
East Cadillac	2481265	Chalice Gold Mines (Quebec) Inc.	100%
East Cadillac	2481266	Chalice Gold Mines (Quebec) Inc.	100%
East Cadillac	2481267	Chalice Gold Mines (Quebec) Inc.	100%
East Cadillac	2481268	Chalice Gold Mines (Quebec) Inc.	100%
East Cadillac	2481269	Chalice Gold Mines (Quebec) Inc.	100%
East Cadillac	2481270	Chalice Gold Mines (Quebec) Inc.	100%
East Cadillac	2481271	Chalice Gold Mines (Quebec) Inc.	100%
East Cadillac	2481272	Chalice Gold Mines (Quebec) Inc.	100%
East Cadillac	2481273	Chalice Gold Mines (Quebec) Inc.	100%
East Cadillac	2481274	Chalice Gold Mines (Quebec) Inc.	100%
East Cadillac	2481275	Chalice Gold Mines (Quebec) Inc.	100%
East Cadillac	2481276	Chalice Gold Mines (Quebec) Inc.	100%
East Cadillac	2481277	Chalice Gold Mines (Quebec) Inc.	100%
East Cadillac	2481278	Chalice Gold Mines (Quebec) Inc.	100%
East Cadillac	2481279	Chalice Gold Mines (Quebec) Inc.	100%
East Cadillac	2481280	Chalice Gold Mines (Quebec) Inc.	100%
East Cadillac	2481281	Chalice Gold Mines (Quebec) Inc.	100%
East Cadillac	2481282	Chalice Gold Mines (Quebec) Inc.	100%
East Cadillac	2481283	Chalice Gold Mines (Quebec) Inc.	100%
East Cadillac	2481284	Chalice Gold Mines (Quebec) Inc.	100%
East Cadillac	2481285	Chalice Gold Mines (Quebec) Inc.	100%
East Cadillac	2481286	Chalice Gold Mines (Quebec) Inc.	100%
East Cadillac	2481287	Chalice Gold Mines (Quebec) Inc.	100%
East Cadillac	2481288	Chalice Gold Mines (Quebec) Inc.	100%
East Cadillac	2481289	Chalice Gold Mines (Quebec) Inc.	100%
East Cadillac	2481290	Chalice Gold Mines (Quebec) Inc.	100%
East Cadillac	2481291	Chalice Gold Mines (Quebec) Inc.	100%
East Cadillac	2481292	Chalice Gold Mines (Quebec) Inc.	100%
East Cadillac	2481293	Chalice Gold Mines (Quebec) Inc.	100%
East Cadillac	2481294	Chalice Gold Mines (Quebec) Inc.	100%
East Cadillac	2481295	Chalice Gold Mines (Quebec) Inc.	100%
East Cadillac	2481296	Chalice Gold Mines (Quebec) Inc.	100%
East Cadillac	2481297	Chalice Gold Mines (Quebec) Inc.	100%
East Cadillac	2481298	Chalice Gold Mines (Quebec) Inc.	100%
East Cadillac	2481299	Chalice Gold Mines (Quebec) Inc.	100%
East Cadillac	2481300	Chalice Gold Mines (Quebec) Inc.	100%
East Cadillac	2491126	Chalice Gold Mines (Quebec) Inc.	100%
East Cadillac	2491239	Chalice Gold Mines (Quebec) Inc.	100%
East Cadillac	2491240	Chalice Gold Mines (Quebec) Inc.	100%
East Cadillac	2491241	Chalice Gold Mines (Quebec) Inc.	100%
East Cadillac	2491242	Chalice Gold Mines (Quebec) Inc.	100%

Project	Claim Number	Registered Holder	Ownership interest
East Cadillac	2491243	Chalice Gold Mines (Quebec) Inc.	100%
East Cadillac	2491244	Chalice Gold Mines (Quebec) Inc.	100%
East Cadillac	2491245	Chalice Gold Mines (Quebec) Inc.	100%
East Cadillac	2491246	Chalice Gold Mines (Quebec) Inc.	100%
East Cadillac	2491247	Chalice Gold Mines (Quebec) Inc.	100%
East Cadillac	2491248	Chalice Gold Mines (Quebec) Inc.	100%
East Cadillac	2491249	Chalice Gold Mines (Quebec) Inc.	100%
East Cadillac	2491250	Chalice Gold Mines (Quebec) Inc.	100%
East Cadillac	2437791	Globex Mining Enterprises Inc.	0% - earning into a 100% interest
East Cadillac	2437792	Globex Mining Enterprises Inc.	0% - earning into a 100% interest
East Cadillac	2437793	Globex Mining Enterprises Inc.	0% - earning into a 100% interest
East Cadillac	2437794	Globex Mining Enterprises Inc.	0% - earning into a 100% interest
East Cadillac	2437795	Globex Mining Enterprises Inc.	0% - earning into a 100% interest
East Cadillac	2437796	Globex Mining Enterprises Inc.	0% - earning into a 100% interest
East Cadillac	2437797	Globex Mining Enterprises Inc.	0% - earning into a 100% interest
East Cadillac	2437798	Globex Mining Enterprises Inc.	0% - earning into a 100% interest
East Cadillac	2437799	Globex Mining Enterprises Inc.	0% - earning into a 100% interest
East Cadillac	2437800	Globex Mining Enterprises Inc.	0% - earning into a 100% interest
East Cadillac	2437801	Globex Mining Enterprises Inc.	0% - earning into a 100% interest
East Cadillac	2437802	Globex Mining Enterprises Inc.	0% - earning into a 100% interest
East Cadillac	2437803	Globex Mining Enterprises Inc.	0% - earning into a 100% interest
East Cadillac	2437804	Globex Mining Enterprises Inc.	0% - earning into a 100% interest
East Cadillac	2437805	Globex Mining Enterprises Inc.	0% - earning into a 100% interest
East Cadillac	2437806	Globex Mining Enterprises Inc.	0% - earning into a 100% interest
East Cadillac	2437807	Globex Mining Enterprises Inc.	0% - earning into a 100% interest
East Cadillac	2437808	Globex Mining Enterprises Inc.	0% - earning into a 100% interest
East Cadillac	2437809	Globex Mining Enterprises Inc.	0% - earning into a 100% interest
East Cadillac	2437810	Globex Mining Enterprises Inc.	0% - earning into a 100% interest
East Cadillac	2437811	Globex Mining Enterprises Inc.	0% - earning into a 100% interest
East Cadillac	2437862	Globex Mining Enterprises Inc.	0% - earning into a 100% interest
East Cadillac	2437863	Globex Mining Enterprises Inc.	0% - earning into a 100% interest
East Cadillac	2437864	Globex Mining Enterprises Inc.	0% - earning into a 100% interest
East Cadillac	2437865	Globex Mining Enterprises Inc.	0% - earning into a 100% interest
East Cadillac	2437866	Globex Mining Enterprises Inc.	0% - earning into a 100% interest
East Cadillac	2437867	Globex Mining Enterprises Inc.	0% - earning into a 100% interest
East Cadillac	2437868	Globex Mining Enterprises Inc.	0% - earning into a 100% interest
East Cadillac	2437869	Globex Mining Enterprises Inc.	0% - earning into a 100% interest
East Cadillac	2437870	Globex Mining Enterprises Inc.	0% - earning into a 100% interest
East Cadillac	2437871	Globex Mining Enterprises Inc.	0% - earning into a 100% interest
East Cadillac	2437872	Globex Mining Enterprises Inc.	0% - earning into a 100% interest
East Cadillac	2437873	Globex Mining Enterprises Inc.	0% - earning into a 100% interest
East Cadillac	2437912	Globex Mining Enterprises Inc.	0% - earning into a 100% interest
East Cadillac	2437913	Globex Mining Enterprises Inc.	0% - earning into a 100% interest
East Cadillac	2437914	Globex Mining Enterprises Inc.	0% - earning into a 100% interest
East Cadillac	2437915	Globex Mining Enterprises Inc.	0% - earning into a 100% interest
East Cadillac	2438798	Compagnie minière Baie Bateman inc. (40%) Globex Mining Enterprises Inc. (60%)	0% - earning into a 100% interest
East Cadillac	2438799	Compagnie minière Baie Bateman inc. (40%) Globex Mining Enterprises Inc. (60%)	0% - earning into a 100% interest
East Cadillac	2438800	Compagnie minière Baie Bateman inc. (40%) Globex Mining Enterprises Inc. (60%)	0% - earning into a 100% interest
East Cadillac	2438801	Compagnie minière Baie Bateman inc. (40%) Globex Mining Enterprises Inc. (60%)	0% - earning into a 100% interest
East Cadillac	2438802	Compagnie minière Baie Bateman inc. (40%) Globex Mining Enterprises Inc. (60%)	0% - earning into a 100% interest
East Cadillac	2438803	Compagnie minière Baie Bateman inc. (40%) Globex Mining Enterprises Inc. (60%)	0% - earning into a 100% interest
East Cadillac	2438804	Compagnie minière Baie Bateman inc. (40%) Globex Mining Enterprises Inc. (60%)	0% - earning into a 100% interest

Project	Claim Number	Registered Holder	Ownership interest
East Cadillac	2438805	Compagnie minière Baie Bateman inc. (40%) Globex Mining Enterprises Inc. (60%)	0% - earning into a 100% interest
East Cadillac	2438806	Compagnie minière Baie Bateman inc. (40%) Globex Mining Enterprises Inc. (60%)	0% - earning into a 100% interest
East Cadillac	2438807	Compagnie minière Baie Bateman inc. (40%) Globex Mining Enterprises Inc. (60%)	0% - earning into a 100% interest
East Cadillac	2438808	Compagnie minière Baie Bateman inc. (40%) Globex Mining Enterprises Inc. (60%)	0% - earning into a 100% interest
East Cadillac	2438809	Compagnie minière Baie Bateman inc. (40%) Globex Mining Enterprises Inc. (60%)	0% - earning into a 100% interest
East Cadillac	2438810	Compagnie minière Baie Bateman inc. (40%) Globex Mining Enterprises Inc. (60%)	0% - earning into a 100% interest
East Cadillac	2438811	Compagnie minière Baie Bateman inc. (40%) Globex Mining Enterprises Inc. (60%)	0% - earning into a 100% interest
East Cadillac	2438935	Compagnie minière Baie Bateman inc. (40%) Globex Mining Enterprises Inc. (60%)	0% - earning into a 100% interest
East Cadillac	2438936	Compagnie minière Baie Bateman inc. (40%) Globex Mining Enterprises Inc. (60%)	0% - earning into a 100% interest
East Cadillac	2438937	Compagnie minière Baie Bateman inc. (40%) Globex Mining Enterprises Inc. (60%)	0% - earning into a 100% interest
East Cadillac	2385084	Richmont Mines Inc.	0% - earning into a 70% interest
East Cadillac	2438140	Richmont Mines Inc.	0% - earning into a 70% interest
East Cadillac	2438141	Richmont Mines Inc.	0% - earning into a 70% interest
East Cadillac	2438142	Richmont Mines Inc.	0% - earning into a 70% interest
East Cadillac	2438143	Richmont Mines Inc.	0% - earning into a 70% interest
East Cadillac	2438144	Richmont Mines Inc.	0% - earning into a 70% interest
East Cadillac	2438145	Richmont Mines Inc.	0% - earning into a 70% interest
East Cadillac	2438146	Richmont Mines Inc.	0% - earning into a 70% interest
East Cadillac	2438147	Richmont Mines Inc.	0% - earning into a 70% interest
East Cadillac	2438148	Richmont Mines Inc.	0% - earning into a 70% interest
East Cadillac	2438149	Richmont Mines Inc.	0% - earning into a 70% interest
East Cadillac	2438150	Richmont Mines Inc.	0% - earning into a 70% interest
East Cadillac	2438151	Richmont Mines Inc.	0% - earning into a 70% interest
East Cadillac	2438152	Richmont Mines Inc.	0% - earning into a 70% interest
East Cadillac	2438153	Richmont Mines Inc.	0% - earning into a 70% interest
East Cadillac	2438154	Richmont Mines Inc.	0% - earning into a 70% interest
East Cadillac	2438155	Richmont Mines Inc.	0% - earning into a 70% interest
East Cadillac	2438156	Richmont Mines Inc.	0% - earning into a 70% interest
East Cadillac	2438157	Richmont Mines Inc.	0% - earning into a 70% interest
East Cadillac	2438158	Richmont Mines Inc.	0% - earning into a 70% interest
East Cadillac	2438159	Richmont Mines Inc.	0% - earning into a 70% interest
East Cadillac	2438160	Richmont Mines Inc.	0% - earning into a 70% interest
East Cadillac	2438161	Richmont Mines Inc.	0% - earning into a 70% interest
East Cadillac	2438162	Richmont Mines Inc.	0% - earning into a 70% interest
East Cadillac	2438163	Richmont Mines Inc.	0% - earning into a 70% interest
East Cadillac	2438164	Richmont Mines Inc.	0% - earning into a 70% interest
East Cadillac	2438165	Richmont Mines Inc.	0% - earning into a 70% interest
East Cadillac	2438166	Richmont Mines Inc.	0% - earning into a 70% interest
East Cadillac	2438167	Richmont Mines Inc.	0% - earning into a 70% interest
East Cadillac	2438168	Richmont Mines Inc.	0% - earning into a 70% interest
East Cadillac	2438169	Richmont Mines Inc.	0% - earning into a 70% interest
East Cadillac	2438170	Richmont Mines Inc.	0% - earning into a 70% interest
East Cadillac	2438171	Richmont Mines Inc.	0% - earning into a 70% interest
East Cadillac	2438172	Richmont Mines Inc.	0% - earning into a 70% interest
East Cadillac	2438173	Richmont Mines Inc.	0% - earning into a 70% interest
East Cadillac	2438174	Richmont Mines Inc.	0% - earning into a 70% interest
East Cadillac	2438175	Richmont Mines Inc.	0% - earning into a 70% interest
East Cadillac	2438176	Richmont Mines Inc.	0% - earning into a 70% interest
East Cadillac	2438177	Richmont Mines Inc.	0% - earning into a 70% interest

Project	Claim Number	Registered Holder	Ownership interest
East Cadillac	2438178	Richmont Mines Inc.	0% - earning into a 70% interest
East Cadillac	2438179	Richmont Mines Inc.	0% - earning into a 70% interest
East Cadillac	2438180	Richmont Mines Inc.	0% - earning into a 70% interest
East Cadillac	2438181	Richmont Mines Inc.	0% - earning into a 70% interest
East Cadillac	2438182	Richmont Mines Inc.	0% - earning into a 70% interest
East Cadillac	2438183	Richmont Mines Inc.	0% - earning into a 70% interest
East Cadillac	2438184	Richmont Mines Inc.	0% - earning into a 70% interest
East Cadillac	2438185	Richmont Mines Inc.	0% - earning into a 70% interest
East Cadillac	2438186	Richmont Mines Inc.	0% - earning into a 70% interest
East Cadillac	2438187	Richmont Mines Inc.	0% - earning into a 70% interest
East Cadillac	2438188	Richmont Mines Inc.	0% - earning into a 70% interest
East Cadillac	2438189	Richmont Mines Inc.	0% - earning into a 70% interest
East Cadillac	2438190	Richmont Mines Inc.	0% - earning into a 70% interest
East Cadillac	2438191	Richmont Mines Inc.	0% - earning into a 70% interest
East Cadillac	2438192	Richmont Mines Inc.	0% - earning into a 70% interest
East Cadillac	2438193	Richmont Mines Inc.	0% - earning into a 70% interest
East Cadillac	2438194	Richmont Mines Inc.	0% - earning into a 70% interest
East Cadillac	2438195	Richmont Mines Inc.	0% - earning into a 70% interest
East Cadillac	2438196	Richmont Mines Inc.	0% - earning into a 70% interest
East Cadillac	2438197	Richmont Mines Inc.	0% - earning into a 70% interest
East Cadillac	2438198	Richmont Mines Inc.	0% - earning into a 70% interest
East Cadillac	2438199	Richmont Mines Inc.	0% - earning into a 70% interest
East Cadillac	2438200	Richmont Mines Inc.	0% - earning into a 70% interest
East Cadillac	2438201	Richmont Mines Inc.	0% - earning into a 70% interest
East Cadillac	2438202	Richmont Mines Inc.	0% - earning into a 70% interest
East Cadillac	2438203	Richmont Mines Inc.	0% - earning into a 70% interest
East Cadillac	2438204	Richmont Mines Inc.	0% - earning into a 70% interest
East Cadillac	2438205	Richmont Mines Inc.	0% - earning into a 70% interest
East Cadillac	2438206	Richmont Mines Inc.	0% - earning into a 70% interest
East Cadillac	2438207	Richmont Mines Inc.	0% - earning into a 70% interest
East Cadillac	2438208	Richmont Mines Inc.	0% - earning into a 70% interest
East Cadillac	2438209	Richmont Mines Inc.	0% - earning into a 70% interest
East Cadillac	2438210	Richmont Mines Inc.	0% - earning into a 70% interest
East Cadillac	2438211	Richmont Mines Inc.	0% - earning into a 70% interest

Appendix 5B

Mining exploration entity and oil and gas exploration entity quarterly report

Introduced 01/07/96 Origin Appendix 8 Amended 01/07/97, 01/07/98, 30/09/01, 01/06/10, 17/12/10, 01/05/13, 01/09/16

Name of entity

Chalice Gold Mines Limited

ABN

47 116 648 956

Quarter ended ("current quarter")

30 June 2017

Consolidated statement of cash flows	Current quarter \$A'000	Year to date (12 months) \$A'000
1. Cash flows from operating activities		
1.1 Receipts from customers	52	151
1.2 Payments for		
(a) exploration & evaluation	(1,231)	(3,261)
(b) development	-	-
(c) production	-	-
(d) staff costs	(204)	(761)
(e) administration and corporate costs	(344)	(885)
1.3 Dividends received (see note 3)	-	-
1.4 Interest received	64	240
1.5 Interest and other costs of finance paid	-	-
1.6 Income taxes paid	(53)	(53)
1.7 Research and development refunds	-	-
1.8 Other:		
- Business Development	(125)	(1,306)
- Costs associated with the sale of the Cameron Gold Project.	-	(175)
- Exploration tax credits received	16	172
1.9 Net cash from / (used in) operating activities	(1,825)	(5,878)

Consolidated statement of cash flows		Current quarter \$A'000	Year to date (12 months) \$A'000
2.	Cash flows from investing activities		
2.1	Payments to acquire:		
	(a) property, plant and equipment	(33)	(85)
	(b) tenements (see item 10)	-	-
	(c) investments	(1,042)	(5,835)
	(d) other non-current assets	-	-
2.2	Proceeds from the disposal of:		
	(a) property, plant and equipment	6	9
	(b) tenements (see item 10)	-	25
	(c) investments	7,375	27,070
	(d) other non-current assets	-	-
2.3	Cash flows from loans to other entities	-	-
2.4	Dividends received (see note 3)	-	-
2.5	Other (provide details if material)	-	-
2.6	Net cash from / (used in) investing activities	6,306	21,184

3.	Cash flows from financing activities		
3.1	Proceeds from issues of shares	-	-
3.2	Proceeds from issue of convertible notes	-	-
3.3	Proceeds from exercise of share options	-	-
3.4	Transaction costs related to issues of shares, convertible notes or options	-	-
3.5	Proceeds from borrowings	-	-
3.6	Repayment of borrowings	-	-
3.7	Transaction costs related to loans and borrowings	-	-
3.8	Dividends paid	-	-
3.9	Other:		
	- On-market share buy-back	(230)	(3,787)
	- Security deposit	-	(20)
3.10	Net cash from / (used in) financing activities	(230)	(3,807)

Consolidated statement of cash flows		Current quarter \$A'000	Year to date (12 months) \$A'000
4.	Net increase / (decrease) in cash and cash equivalents for the period		
4.1	Cash and cash equivalents at beginning of period	42,318	35,734
4.2	Net cash from / (used in) operating activities (item 1.9 above)	(1,825)	(5,878)
4.3	Net cash from / (used in) investing activities (item 2.6 above)	6,306	21,184
4.4	Net cash from / (used in) financing activities (item 3.10 above)	(230)	(3,807)
4.5	Effect of movement in exchange rates on cash held	250	(414)
4.6	Cash and cash equivalents at end of period	46,819	46,819

5.	Reconciliation of cash and cash equivalents at the end of the quarter (as shown in the consolidated statement of cash flows) to the related items in the accounts	Current quarter \$A'000	Previous quarter \$A'000
5.1	Bank balances	10,463	38,318
5.2	Call deposits	36,356	4,000
5.3	Bank overdrafts	-	-
5.4	Other (provide details)	-	-
5.5	Cash and cash equivalents at end of quarter (should equal item 4.6 above)	46,819	42,318

6.	Payments to directors of the entity and their associates	Current quarter \$A'000
6.1	Aggregate amount of payments to these parties included in item 1.2	155
6.2	Aggregate amount of cash flow from loans to these parties included in item 2.3	-
6.3	Include below any explanation necessary to understand the transactions included in items 6.1 and 6.2	

Includes directors' fees and salaries (including superannuation) of \$155,000.

7.	Payments to related entities of the entity and their associates	Current quarter \$A'000
7.1	Aggregate amount of payments to these parties included in item 1.2	-
7.2	Aggregate amount of cash flow from loans to these parties included in item 2.3	-
7.3	Include below any explanation necessary to understand the transactions included in items 7.1 and 7.2	

8.	Financing facilities available <i>Add notes as necessary for an understanding of the position</i>	Total facility amount at quarter end \$A'000	Amount drawn at quarter end \$A'000
8.1	Loan facilities	-	-
8.2	Credit standby arrangements	-	-
8.3	Other (please specify)	-	-
8.4	Include below a description of each facility above, including the lender, interest rate and whether it is secured or unsecured. If any additional facilities have been entered into or are proposed to be entered into after quarter end, include details of those facilities as well.		
N/A			

9.	Estimated cash outflows for next quarter	\$A'000
9.1	Exploration and evaluation	(2,563)
9.2	Development	-
9.3	Production	-
9.4	Staff costs	(214)
9.5	Administration and corporate costs ⁽¹⁾	(191)
9.6	Other: Business development costs	(311)
9.7	Total estimated cash outflows	(3,279)
⁽¹⁾ Administration and corporate costs are net of interest revenue and receipts from customers.		

10.	Changes in tenements (items 2.1(b) and 2.2(b) above)	Tenement reference and location	Nature of interest	Interest at beginning of quarter	Interest at end of quarter
10.1	Interests in mining tenements and petroleum tenements lapsed, relinquished or reduced	Nil			
10.2	Interests in mining tenements and petroleum tenements acquired or increased	AUSTRALIA: E57/1050 CANADA: Refer Appendix 1	Owned	0%	100%

Compliance statement

- 1 This statement has been prepared in accordance with accounting standards and policies which comply with Listing Rule 19.11A.
- 2 This statement gives a true and fair view of the matters disclosed.

Sign here:



(Company secretary)

Date: 31 July 2017

Print name: Leanne Stevens

Notes

1. The quarterly report provides a basis for informing the market how the entity's activities have been financed for the past quarter and the effect on its cash position. An entity that wishes to disclose additional information is encouraged to do so, in a note or notes included in or attached to this report.
2. If this quarterly report has been prepared in accordance with Australian Accounting Standards, the definitions in, and provisions of, AASB 6: Exploration for and Evaluation of Mineral Resources and AASB 107: Statement of Cash Flows apply to this report. If this quarterly report has been prepared in accordance with other accounting standards agreed by ASX pursuant to Listing Rule 19.11A, the corresponding equivalent standards apply to this report.
3. Dividends received may be classified either as cash flows from operating activities or cash flows from investing activities, depending on the accounting policy of the entity.

Appendix 1: Interests in mining tenements acquired or increased (Canada)

Project	Claim Number	Registered Holder	Interest at beginning of quarter	Interest at end of quarter
East Cadillac	2491126	Chalice Gold Mines (Quebec) Inc.	0%	100%
East Cadillac	2491239	Chalice Gold Mines (Quebec) Inc.	0%	100%
East Cadillac	2491240	Chalice Gold Mines (Quebec) Inc.	0%	100%
East Cadillac	2491241	Chalice Gold Mines (Quebec) Inc.	0%	100%
East Cadillac	2491242	Chalice Gold Mines (Quebec) Inc.	0%	100%
East Cadillac	2491243	Chalice Gold Mines (Quebec) Inc.	0%	100%
East Cadillac	2491244	Chalice Gold Mines (Quebec) Inc.	0%	100%
East Cadillac	2491245	Chalice Gold Mines (Quebec) Inc.	0%	100%
East Cadillac	2491246	Chalice Gold Mines (Quebec) Inc.	0%	100%
East Cadillac	2491247	Chalice Gold Mines (Quebec) Inc.	0%	100%
East Cadillac	2491248	Chalice Gold Mines (Quebec) Inc.	0%	100%
East Cadillac	2491249	Chalice Gold Mines (Quebec) Inc.	0%	100%
East Cadillac	2491250	Chalice Gold Mines (Quebec) Inc.	0%	100%