

15th January 2020

88 Energy Limited

Charlie-1 Appraisal Well Update

88 Energy Limited (ASX: 88E) (“88 Energy” or the “Company”) provides the following update related to the upcoming drilling of the Charlie-1 appraisal well at Project Icewine, located on the Central North Slope, Alaska.

Highlights

- **Ice road construction underway – base layer ~25% complete**
- **Permit to Drill submitted – approval expected in January 2020**
- **Operational activity for Charlie-1 progressing to plan for February 2020 spud**

Operations Update

Ice road construction is now fully underway with ~25% of the base road now completed and ~35% of the total route staked and pre-packed.

The Permit to Drill was submitted prior to the end of 2019, as planned, and approval is expected towards the end of January. This is the last major permit required prior to spud of the Charlie-1 well.

A more accurate forecast for the scheduled February spud and timing for the drilling / logging / testing program will be communicated in due course.

As per the farm-out agreement, initial cash calls have been receipted into the Joint Venture account.

88 Energy Managing Director, Dave Wall commented: *“The New Year is off to a busy start for the Alaska Operations team with all activity progressing as planned.”*

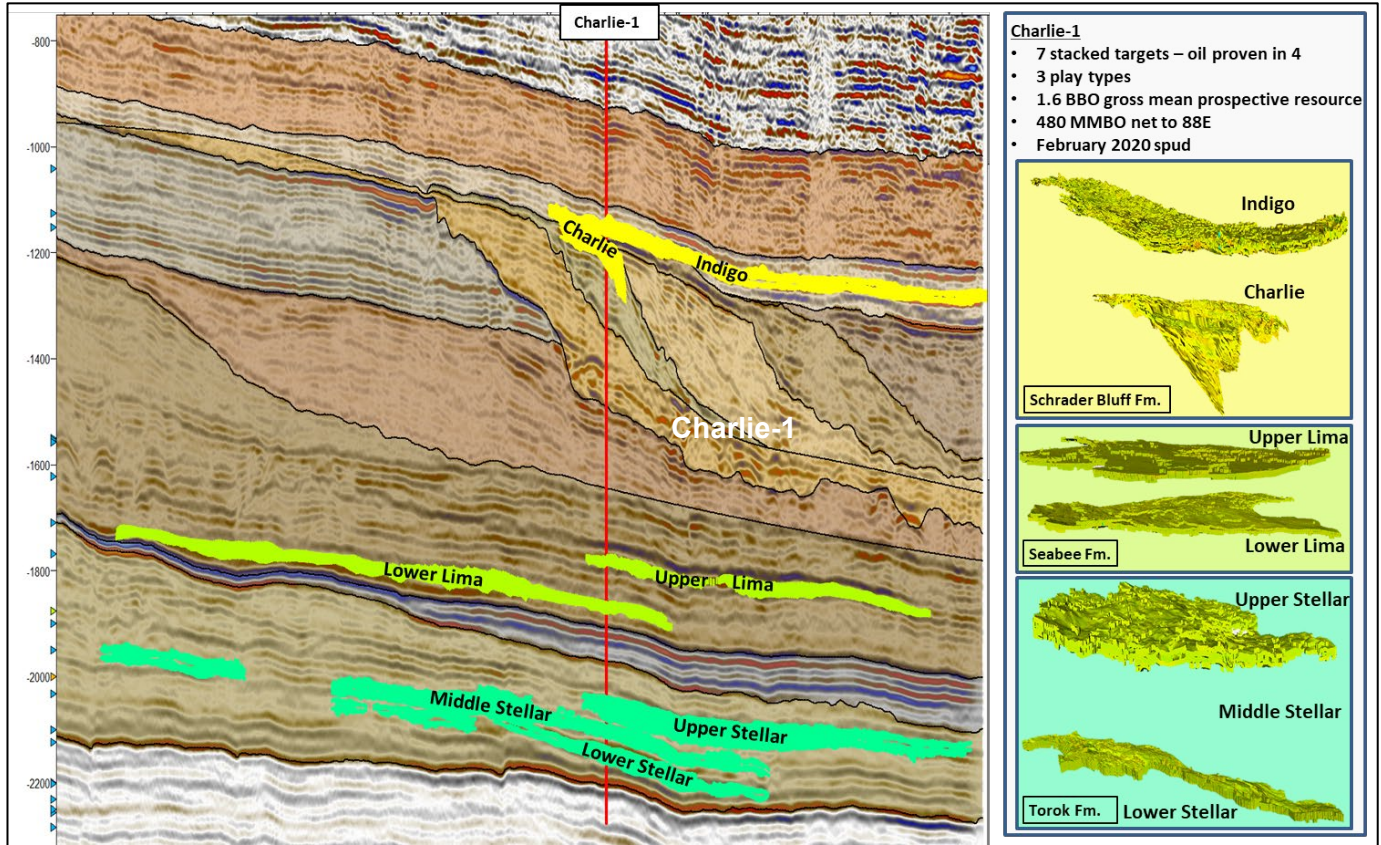
About the Charlie-1 Appraisal Well

The Charlie-1 appraisal well has been designed as a step out appraisal of a well drilled in 1991 by BP Exploration (Alaska) Inc called Malguk-1. Malguk-1 encountered oil shows with elevated resistivity and mud gas readings over multiple horizons during drilling but was not tested due to complications towards the end of operations, which resulted in lack of time before the close of the winter drilling season. It was also drilled using vintage 2D seismic, which was insufficient to adequately determine the extent of any of the prospective targets encountered.

88 Energy subsequently undertook revised petrophysical analysis, which identified what is interpreted as bypassed pay in the Malguk-1 well. 88E also completed acquisition of modern 3D seismic in 2018, in order to determine the extent of the discovered oil accumulations. Charlie-1 will intersect seven stacked prospects, four of which are interpreted as oil bearing in Malguk-1 and are therefore considered appraisal targets. 88 Energy will operate Charlie-1, via its 100% owned subsidiary Accumulate Energy Alaska, Inc, with cost of the well to be funded by Premier Oil Plc up to US\$23m under a recent farm-out agreement. Drilling is scheduled to commence in February 2020 with flow testing anticipated to conclude in April 2020. The total Gross Mean Prospective Resource across the seven stacked targets to be intersected by Charlie-1 is 1.6 billion barrels of oil (480 million barrels net to 88E). Refer announcement dated 23rd August.

Cautionary Statement: The estimated quantities of petroleum that may be potentially recovered by the application of a future development project relate to undiscovered accumulations. These estimates have both an associated risk of discovery and a risk of development. Further exploration, appraisal and evaluation are required to determine the existence of a significant quantity of potentially movable hydrocarbons.

Charlie-1: Seven Stacked Horizons



CHARLIE-1 TARGETS	Prospective Oil Resource (MMBO): Post Farm-Out (Aug '19)					
	Horizon/Play	Low	Best	High	Gross Mean	Net Mean to 88E
Indigo Discovery	Schrader / Topset	225	358	543	374	112
Charlie Prospect	Schrader / Topset	126	201	304	210	63
Lima Discovery / Prospect (stacked)	Seabee / Apron Fan	105	323	713	376	113
Stellar Prospect / Discovery (stacked)	Torok / Fan Channel	320	604	999	639	192
CHARLIE-1 APPRAISAL WELL TOTAL					1,599	480

Yours faithfully



Dave Wall
 Managing Director
 88 Energy Ltd



Media and Investor Relations:

88 Energy Ltd

Dave Wall, Managing Director

Tel: +61 8 9485 0990

Email: admin@88energy.com

Finlay Thomson, Investor Relations

Tel: +44 7976 248471

Hartleys Ltd

Dale Bryan

Tel: + 61 8 9268 2829

Cenkos Securities

Neil McDonald/Derrick Lee

Tel: + 44 131 220 6939