



The Time  
The Place  
The Metal

General Meeting  
July 17 2008  
Mike Young, Managing Director

*This release may include forward-looking statements. These forward-looking statements are based on management's expectations and beliefs concerning future events. Forward-looking statements are necessarily subject to risks, uncertainties and other factors, some of which are outside the control of BC Iron Limited, that could cause actual results to differ materially from such statements. BC Iron Limited makes no undertaking to subsequently update or revise the forward-looking statements made in this release to reflect events or circumstances after the date of this release.*

*The information relating to the terms "iron ore", "exploration target", "direct shipping ore", "conceptual pits" and "upgrade" should not be misunderstood or misconstrued as an estimate of Mineral Resources and Reserves as defined by the JORC Code (2004) and therefore the terms have not been used in this context. It is uncertain if further exploration or feasibility study will result in the determination of a Mineral Resource or Mining Reserve.*

*The information that relates to exploration targets, exploration results and drilling data is based on information compiled by Michael Young who is a Member of The Australian Institute of Geoscientists and a Director of the Company. Mr Young has sufficient experience which is relevant to the style of mineralisation and type of deposit under consideration and to the activity which he is undertaking to qualify as a Competent Persons as defined in the 2004 Edition of the 'Australasian Code for Reporting of Exploration Results, Mineral Resources and Ore Reserves'. Mr Young consents to the inclusion of his name in the matters based on their information in the form and context in which it appears. A full description and JORC Statement relating to the Mineral Resource Estimate is provided in the release to the Australian Securities Exchange dated March 31, 2008.*

*You should not act and refrain from acting in reliance on this presentation material. This overview of BC Iron does not purport to be all inclusive or to contain all information which its recipients may require in order to make an informed assessment of the Company's prospects. You should conduct your own investigation and perform your own analysis in order to satisfy yourself as to the accuracy and completeness of the information, statements and opinions contained in this presentation and making any investment decision.*

*The information contained herein is general in nature and does not constitute financial product advice. If necessary, you should seek specific financial advice of your stockbroker prior to making any investment decision. This presentation has been prepared without taking into account the investment objectives, financial situation or particular needs of any investor.*



<b>Completed</b>	➤ Listed on ASX	Dec 2006
	➤ Capital Raising	Nov 2007
	➤ Maiden Resource Estimate	Mar 2008
	➤ Scoping Study completed	Jun 2008
	➤ Feasibility Study commenced	Jul 2008
<b>Objectives</b>	➤ Resource Estimate	2H 2008
	➤ Feasibility Study	1H 2009
	➤ Construction	2H 2009
	➤ Production	1H 2010





**Board**

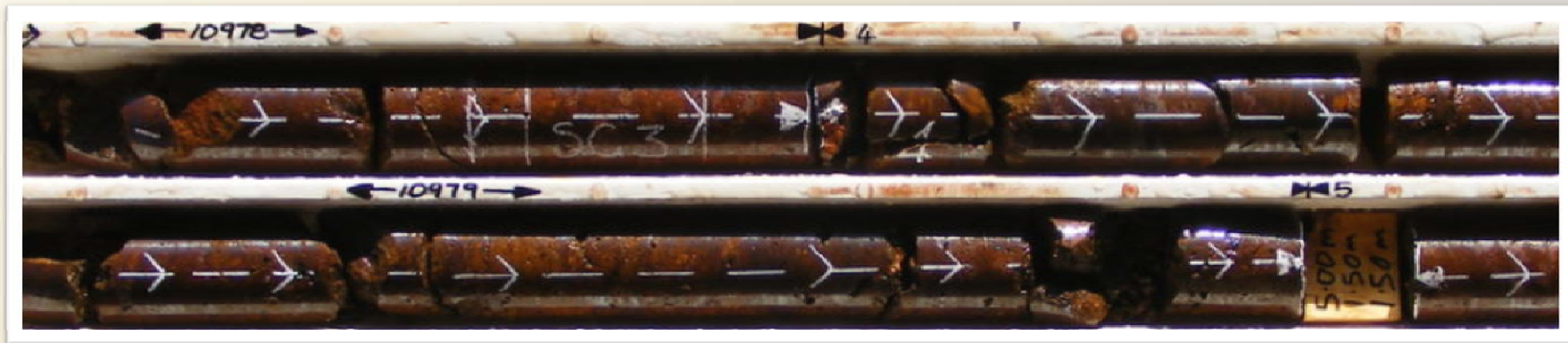
- Tony Kiernan Non-executive Chairman
- Mike Young Managing Director
- Garth Higgs – COO Consmin Non-executive Director
- Terry Ransted – Chief Geologist Alkane Non-executive Director
- Steven Chadwick – Independent Non-executive Director

**Senior  
Management**

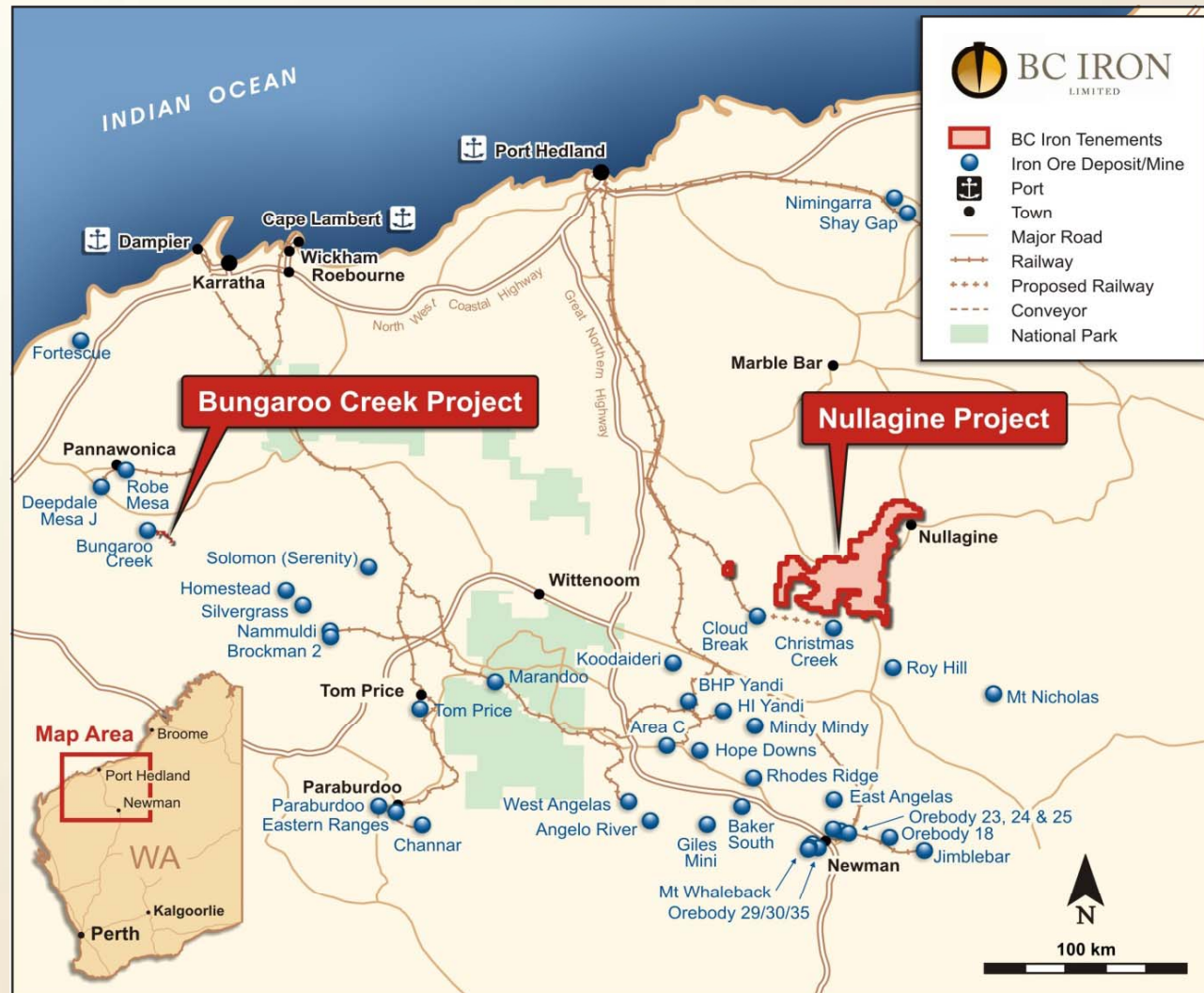
- Blair Duncan GM Operations
- Bill Oliver Exploration Manager
- Shane Bolt Snr Geo Nullagine
- Brett Powter Snr Field Assistant



- Completed on 3Mtpa DSO operation from 2010 ramping up to 5Mtpa by 2011
- Capex A\$85 million – Opex A\$42/tonne – **Margin ~\$30 - 40/tonne**  
*- based on current iron price and Forex projections*
- 2008 Iron Ore Price increase +80% to 144 \$US/dmtu ~**\$80/tonne**  
Simple mine, crush & screen, and haulage operation
- Feasibility Study preliminary fieldwork underway – flora / fauna / vegetation



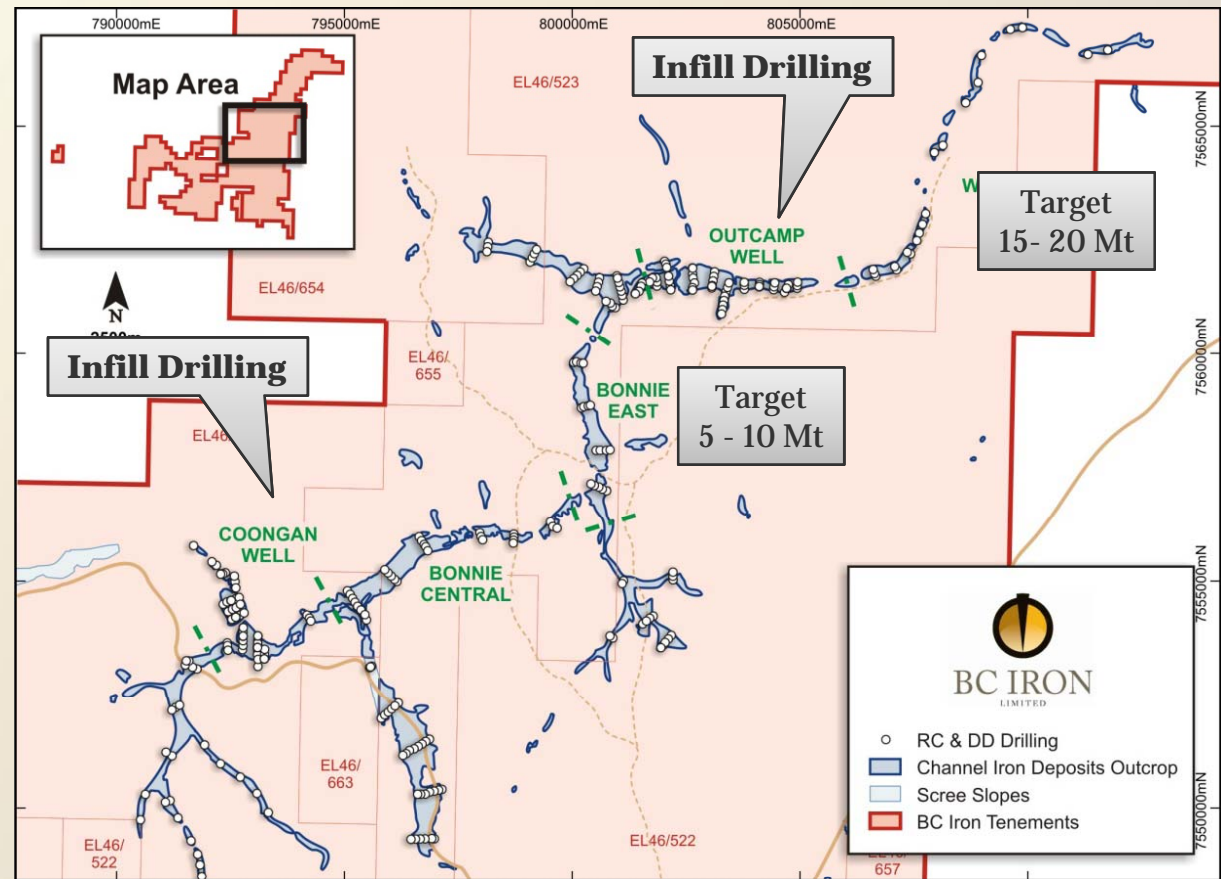
BD0389 – iron ore grading 59.8% Fe in core hole Outcamp Well





## Scoping Study

- DSO 28Mt @ 57.4% Fe (65.1% CaFe)
- 'In Pit' 27.7Mt @ 57.4% Fe (65.1% CaFe)
- Target Production 3Mtpa → 5 Mtpa
- CapEx A\$85M
- OpEx \$42/tonne
- Margin (LoM) \$30-\$40/tonne  
*-Based on projected iron pricing and Forex*
- Simple mine/crush/haul/ship operation
- Current mine life 6 years
- Stripping ratio 1:1
- Target Resource > 40 Mt
- Target Mine Life > 8 years





**Bonnie Creek CID Project**  
**Inferred Mineral Resource Estimate – March 2008**

**DSO Resource Estimate**

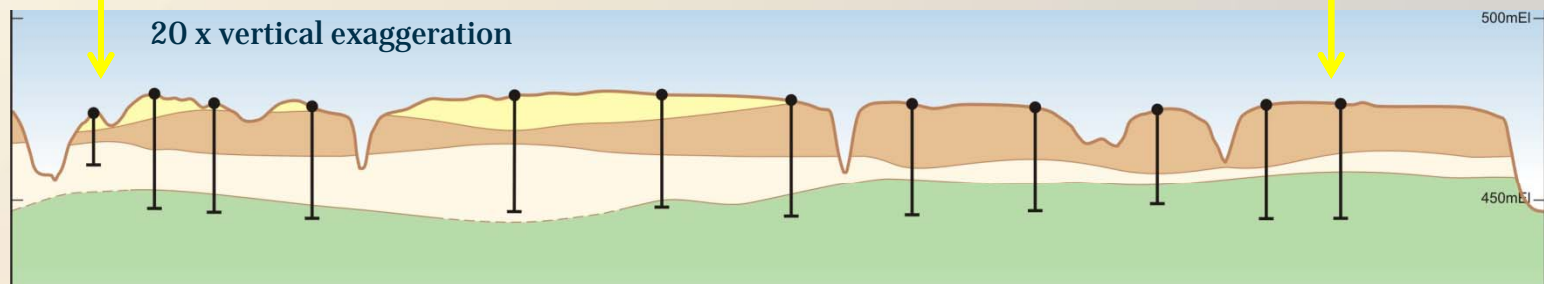
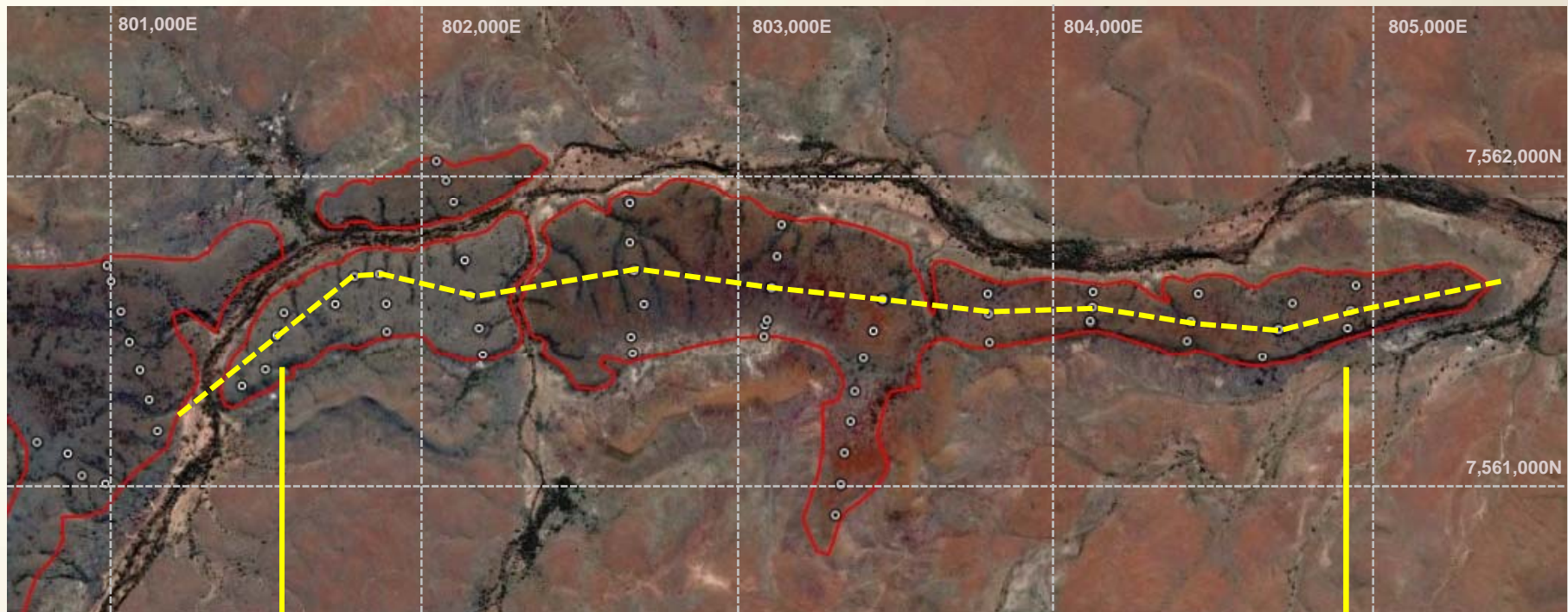
Prospect	COG <sup>1</sup>	Zone	Mt	Fe	CaFe	SiO <sub>2</sub>	Al <sub>2</sub> O <sub>3</sub>	P	S	LOI <sub>1000</sub>
Outcamp	55.0	DSO	20.6	57.3	64.9	3.18	1.70	0.016	0.017	11.8
Coongan	55.0	DSO	7.4	57.8	65.5	2.39	1.86	0.013	0.017	11.8
<b>TOTAL DSO</b>	<b>55.0</b>	<b>DSO</b>	<b>28.0</b>	<b>57.4</b>	<b>65.1</b>	<b>2.98</b>	<b>1.76</b>	<b>0.015</b>	<b>0.017</b>	<b>11.8</b>

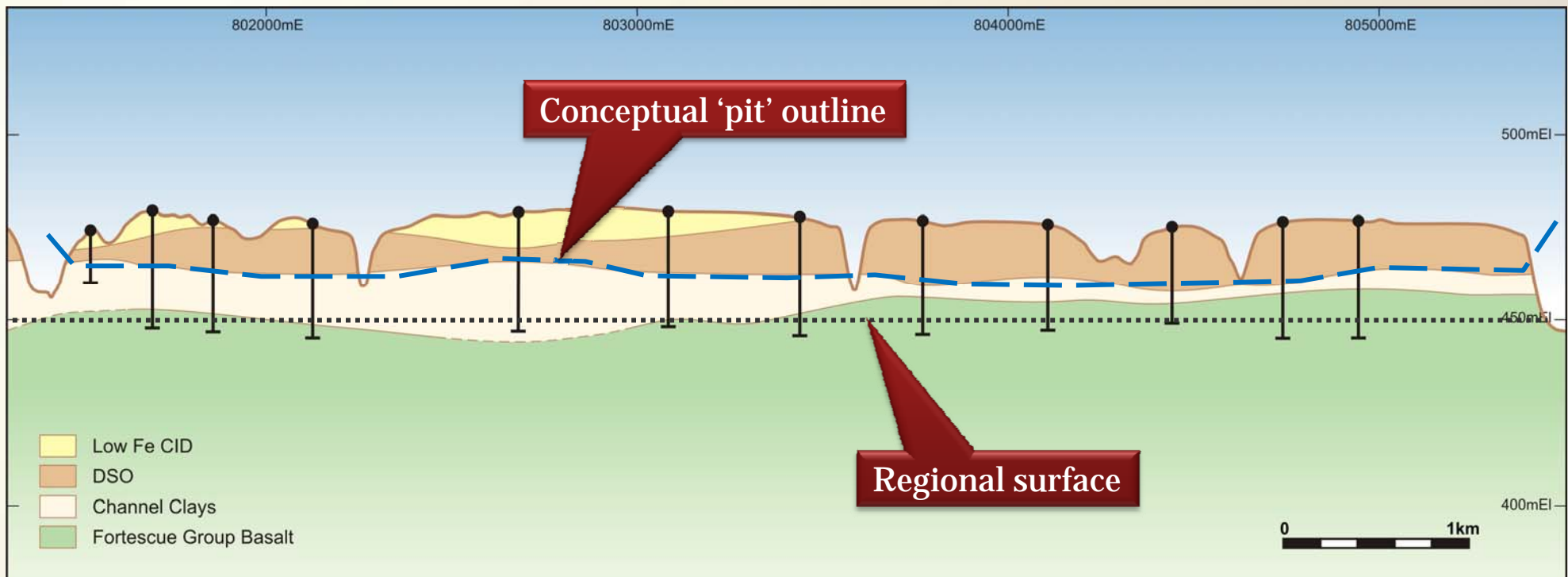
**Conceptual 'in pit' Resource**

Prospect	Zone	Mt	Fe	CaFe	SiO <sub>2</sub>	Al <sub>2</sub> O <sub>3</sub>	P	S	LOI <sub>1000</sub>
Outcamp	DSO	20.5	57.2	64.9	3.20	1.72	0.016	0.017	11.8
Coongan	DSO	7.2	57.8	65.5	2.39	1.86	0.013	0.018	11.8
<b>TOTAL 'In Pit' DSO</b>	<b>DSO</b>	<b>27.2</b>	<b>57.4</b>	<b>65.1</b>	<b>2.99</b>	<b>1.76</b>	<b>0.015</b>	<b>0.017</b>	<b>11.8</b>

- For complete explanation see BC Iron release to the ASX, 31 March 2008
- The resource within the conceptual pit shells should not be misconstrued as a mining reserve  
No ore loss or dilution has been applied and it is uncertain if further work will result in a Mining Reserve.







- Shallow “pits” mainly above surrounding planes
- Above water table – lower impact on subterranean aquatic fauna
- Low strip ratio – low Opex / mining ore from day 1



BC IRON  
LIMITED

## Bonnie Creek CID - Surface Miner

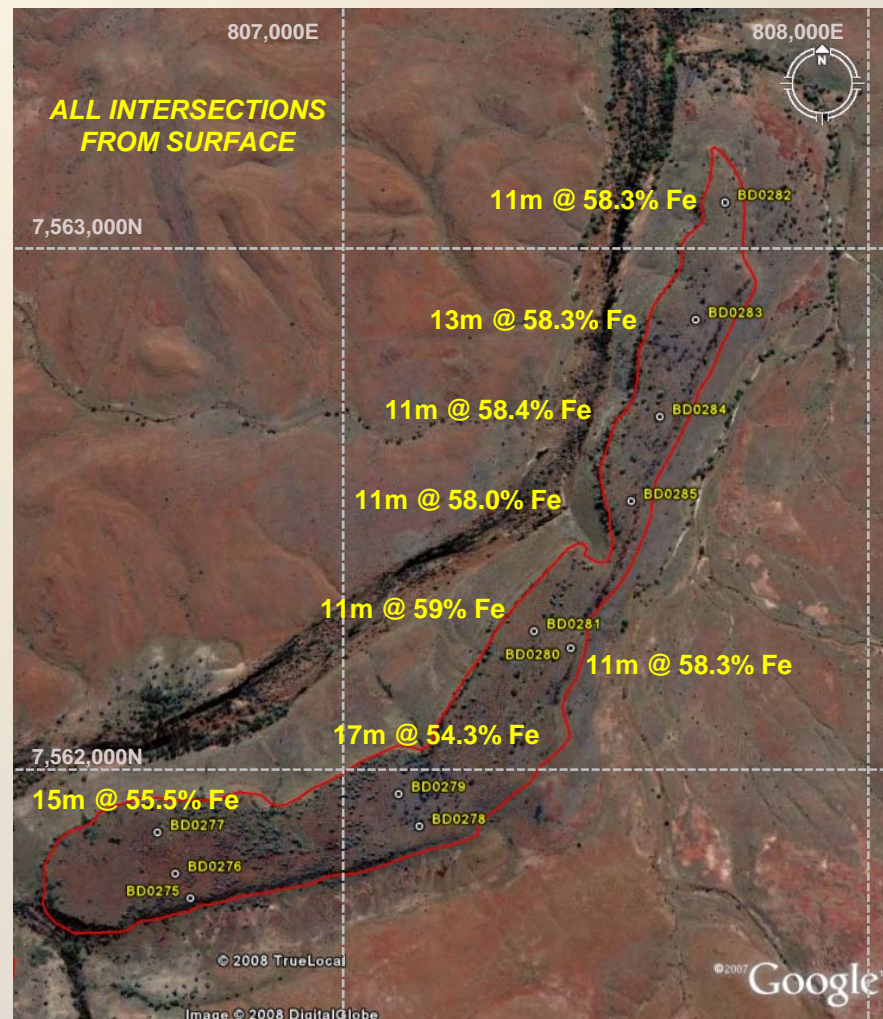
[www.bcion.com.au](http://www.bcion.com.au)





## Warrigal Well CID

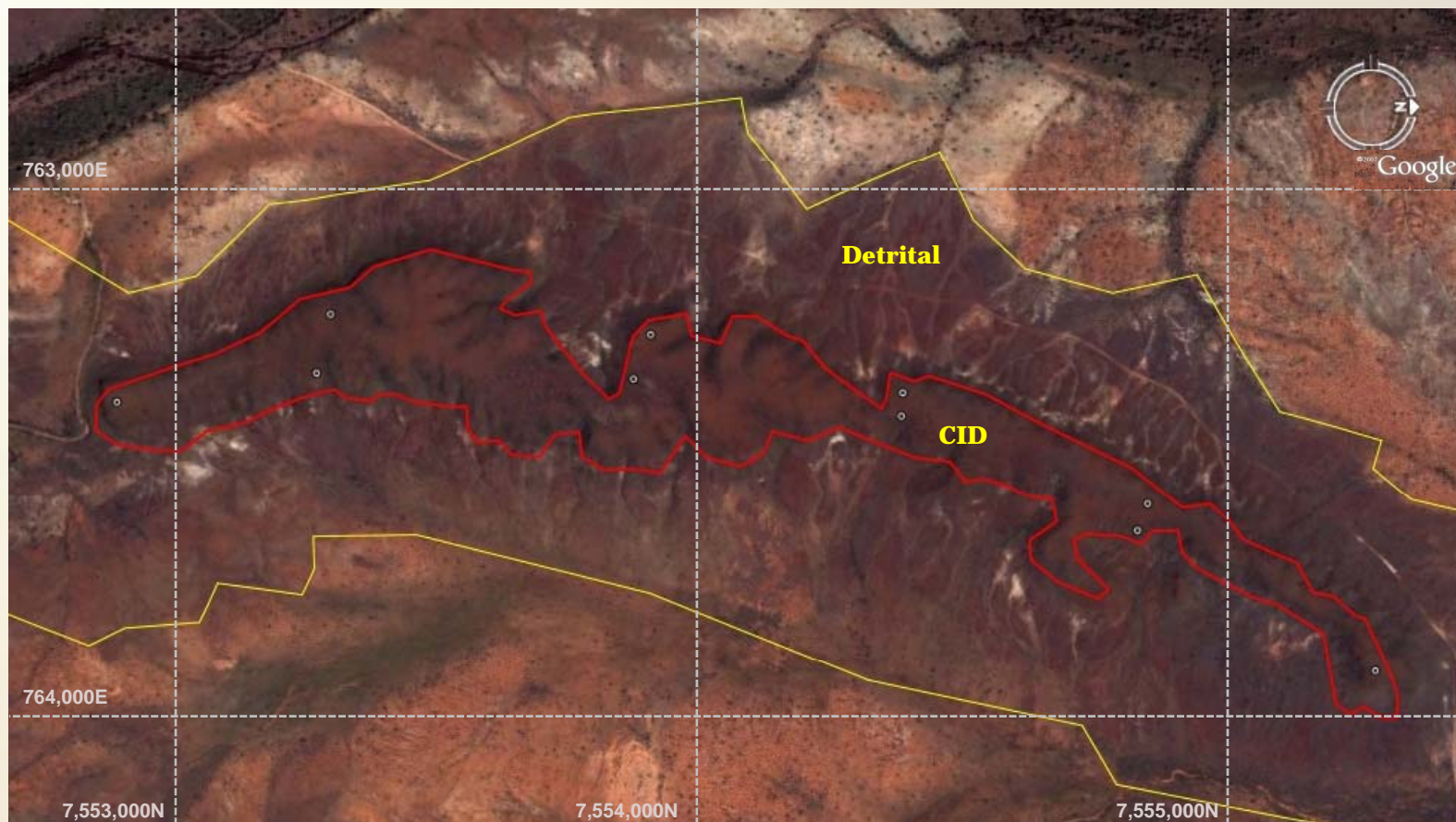
- Directly east of Outcamp Well
- Target 10 – 15 Mt DSO
- Up to 27 m intersection CID
- 7.2 km combined length
- Outcropping mineralisation
- Follow-up drilling mid-2008





### Shaw River CID

- Med grade CID
  - High CaFe
- Detrital Deposits
  - Low cost mining
- Potential source of upgrade ore
- Simple upgrade



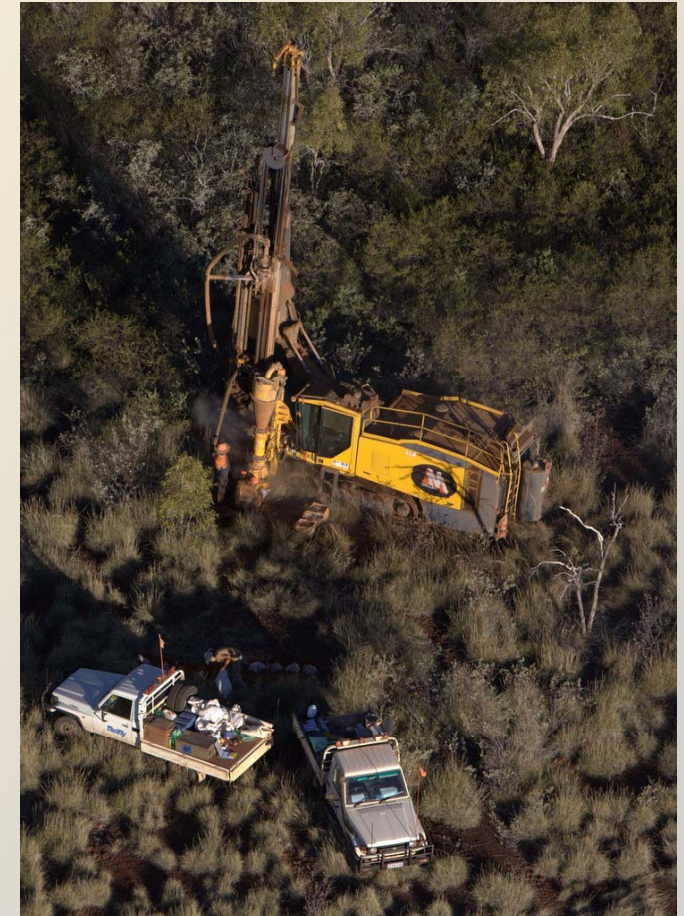
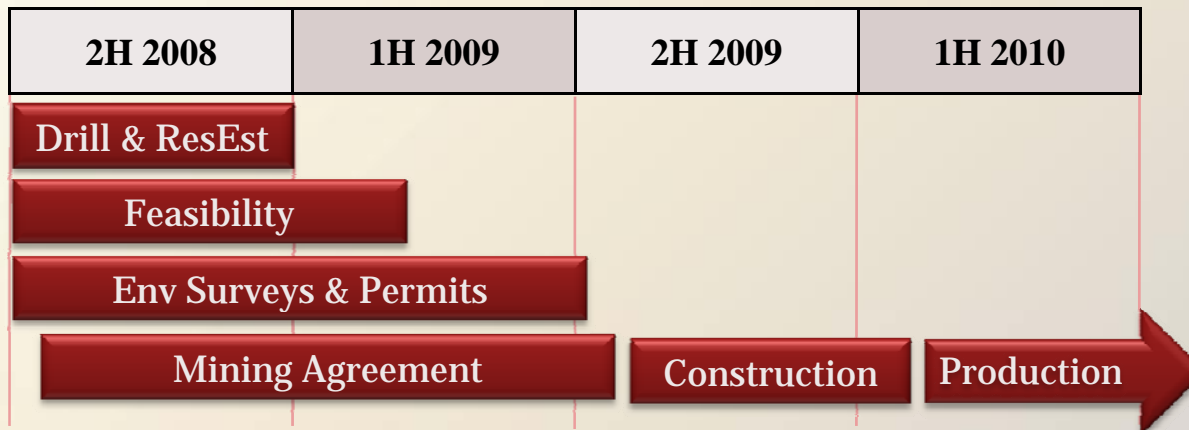
- Fortescue**
- MOU - negotiation over bulk commodity transport Chichester operations to Port Hedland
  - Provides rail loading, haulage, port handling and ship loading services
  - Agreed rate of up to 5 Mtpa DSO fines
  - Rail to Christmas Creek due for completion late 2009
  - Parties to consider other arrangements – JV, mine gate sale

- North West Iron Ore Alliance**
- Atlas Iron, BC Iron, Brockman Resources & FerrAus
  - Diversified iron ore industry in the Pilbara
  - Improved infrastructure access – rail & port
  - Assist with statutory approvals
  - Combined stakeholder & community relations



*Fortescue ore train – photo by BC Iron*

- Timing**
- Scoping Study Bonnie Creek CID **Completed**
  - Baseline Environmental Surveys **Commenced**
  - Infill drilling **Commenced**
  - Resource Estimate **Second Half 2008**
  - Feasibility Study **First Half 2009**
  - Mining Agreements **Second Half 2009**
  - EPA & Mining Approvals **Second Half 2009**
  - Construction commences **Second Half 2009**
  - Production **First Half 2010**



*Drilling at Coongan Well*



**BC IRON**  
LIMITED

**Mike Young, Managing Director**  
Unit 8, 8 Clive Street, West Perth, WA, 6005

**P:** +61 8 9324 3200

**E:** [info@bciron.com.au](mailto:info@bciron.com.au)

**W:** [www.bciron.com.au](http://www.bciron.com.au)