

TANAMI GOLD NL FEB 2010

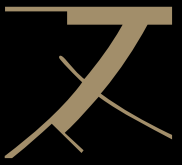
Adding Value Through Performance, Production and Exploration

Disclaimer

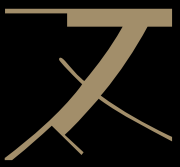


- Certain statements contained in this presentation, including information as to the future financial or operating performance of Tanami Gold NL and its projects, are forward-looking statements. Such forward-looking statements:
 - are necessarily based upon a number of estimates and assumptions that, while considered reasonable by Tanami Gold, are inherently subject to significant technical, business, economic, competitive, political and social uncertainties and contingencies;
 - involve known and unknown risks and uncertainties that could cause actual events or results to differ materially from estimated or anticipated events or results reflected in such forward-looking statements; and
 - may include, among other things, statements regarding targets, estimates and assumptions in respect of metal production and prices, operating costs and results, capital expenditures, mineral reserves and mineral resources and anticipated grades and recovery rates, and are or may be based on assumptions and estimates related to future technical, economic, market, political, social and other conditions.
- Tanami Gold disclaims any intent or obligation to update publicly any forward-looking statements whether as a result of new information, future events or results or otherwise.
- The words 'believe', 'expect', 'anticipate', 'indicate', 'contemplate', 'target', 'plan', 'intends', 'continue', 'budget', 'estimate', 'may', 'will', 'schedule' and similar expressions identify forward-looking statements.
- All forward-looking statements made in this presentation are qualified by the foregoing cautionary statements. Investors are cautioned that forward-looking statements are not guarantees of future performance and accordingly investors are cautioned not to put undue reliance on forward-looking statements due to the inherent uncertainty therein.

Location of Tanami Operations



Capital Structure



- Fully paid shares 3.54 billion
- Unlisted options 43.4 million
- Cash & gold [31 Dec 2009] \$ 5.4 million
- Debt \$10.9 million
- No hedging

Major shareholders [approx. %]

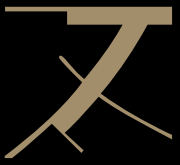
Allied Properties Resources	21.4%
Sun Hung Kai Investments	6.4%
Eurogold	3.7%

Market cap - \$185 million

[as at 12 Feb 2010]



Highlights



- Achieved annualised gold production of 50,000 ozs

- In 15 months Nov'08 to Feb'10

Market cap increase from \$35M to \$185M

Share price increase by 940%

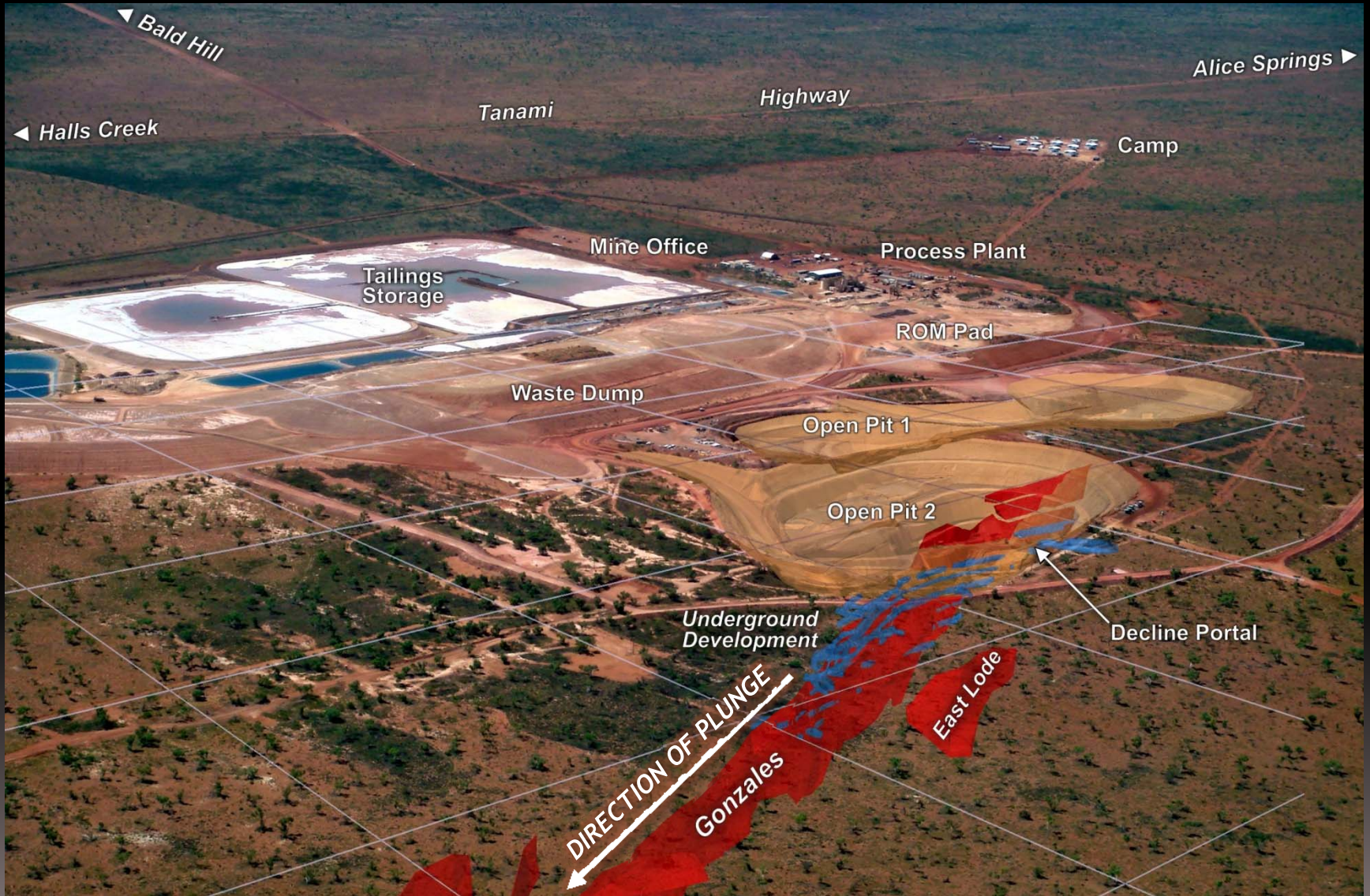


- Recommended surface and underground exploration
- Implemented a Strategic Exploration Alliance with ABM Resources
- Central Tanami acquisition to provide 2nd production centre

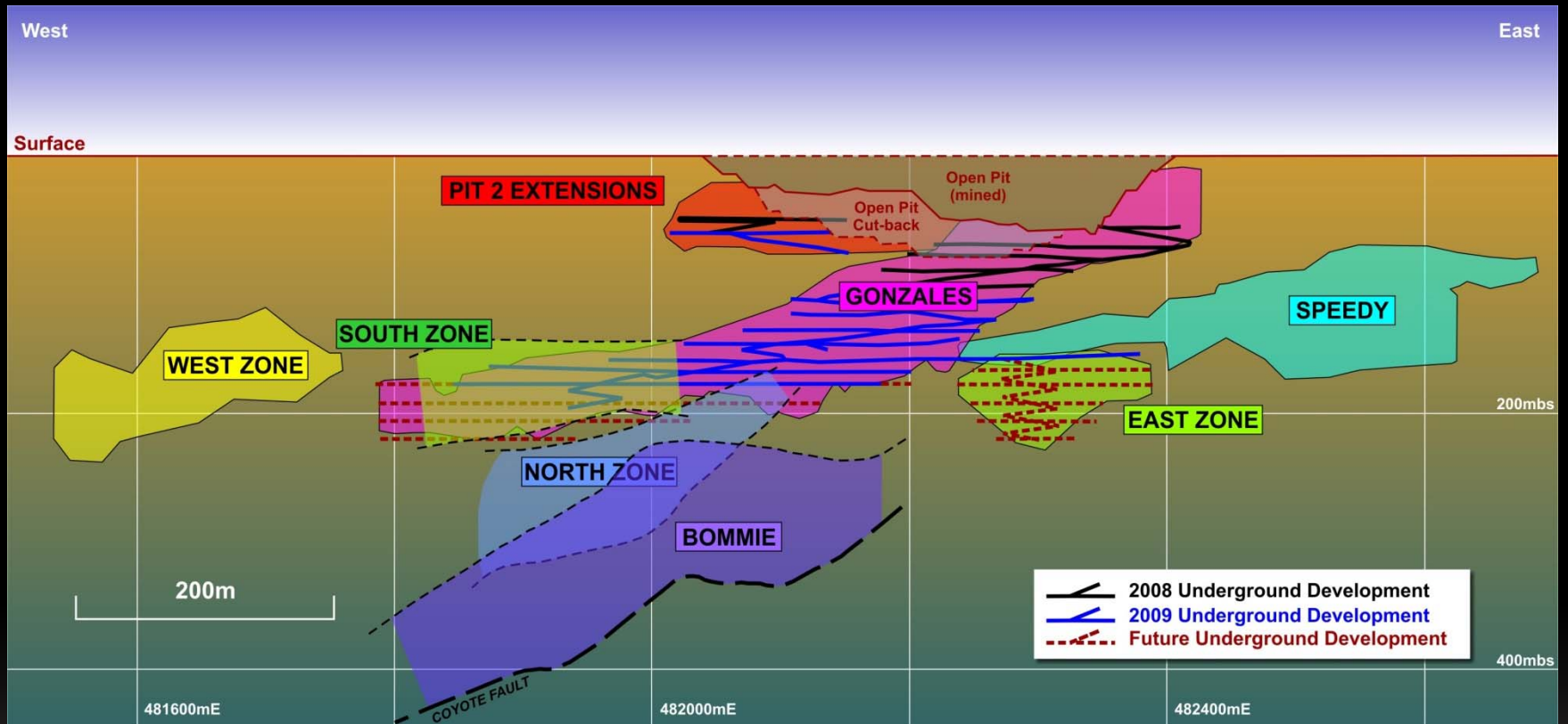
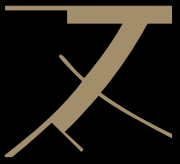


UNDERGROUND MINING

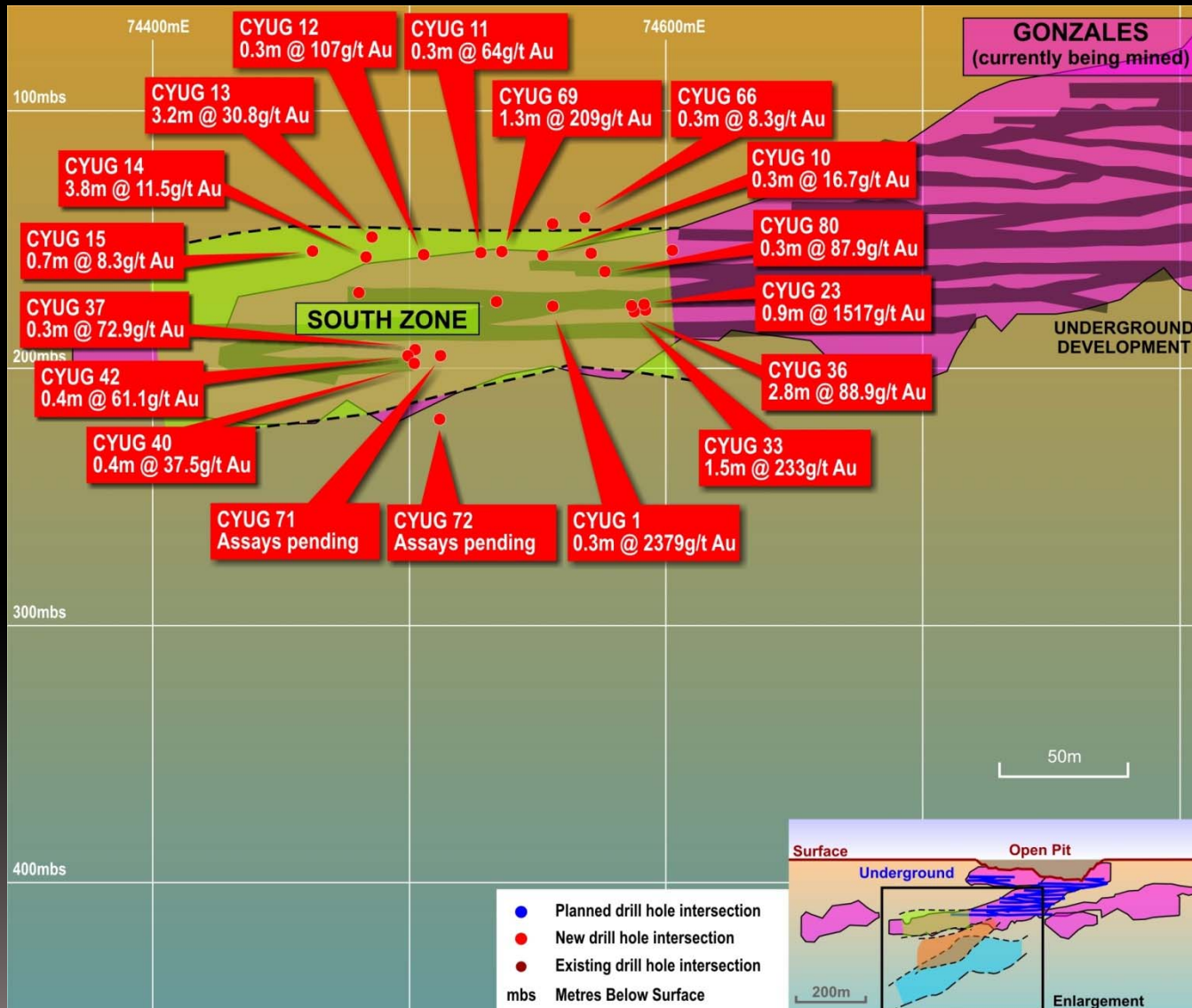
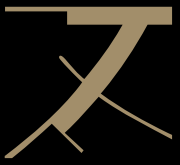
Coyote Mine Site



Coyote Schematic Long Section



Schematic Long Section





SURFACE MINING

SURFACE MINING

Coyote Open Pit 2



Sandpiper Open Pit



GRADE
CONTROL



GRADE
CONTROL

Kookaburra Open Pit



GRADE CONTROL

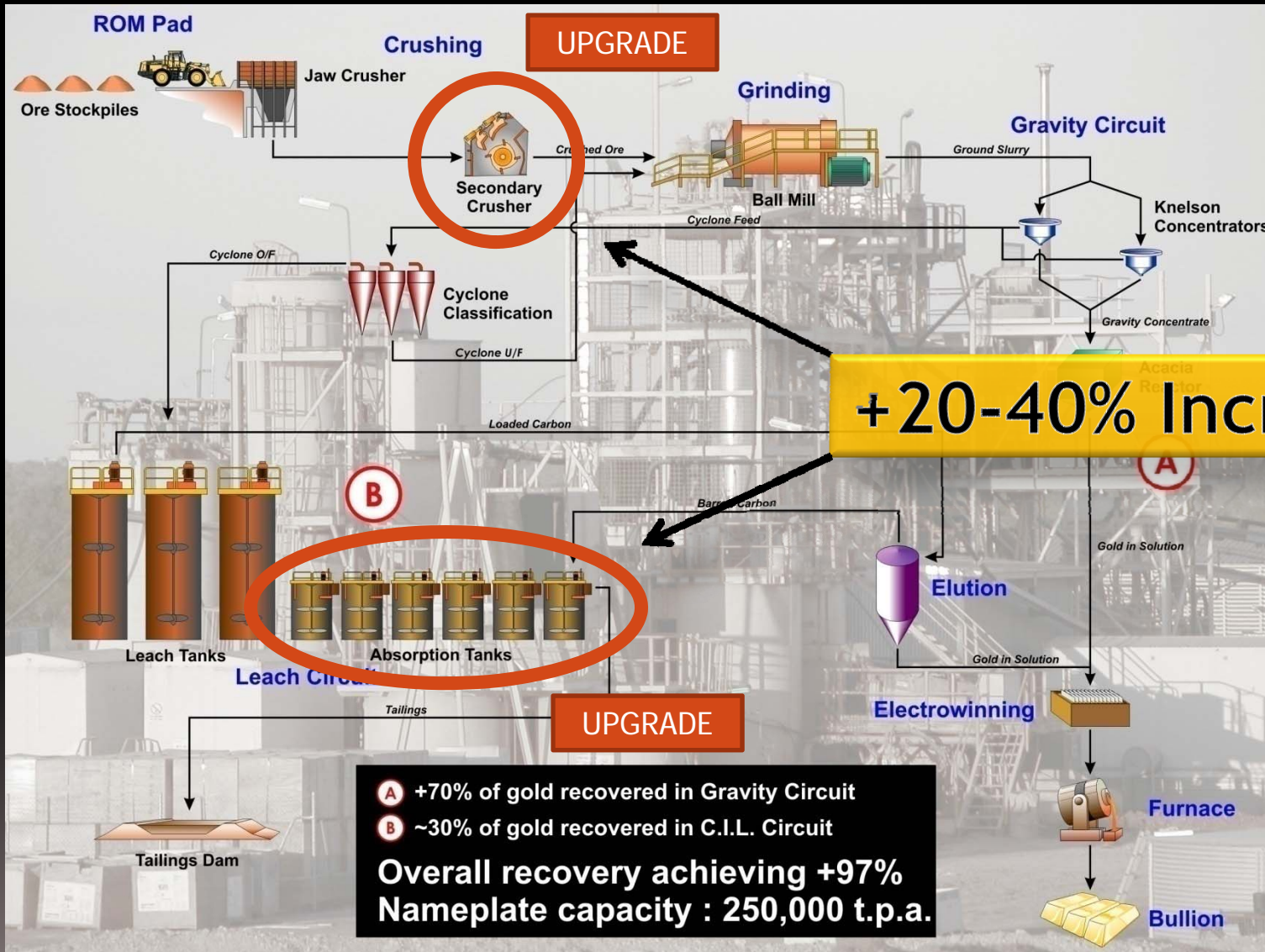
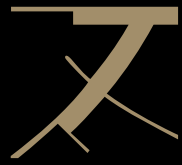


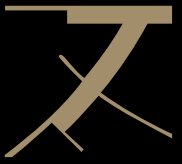
GRADE CONTROL

Bald Hill Road Train



Coyote Process Plant

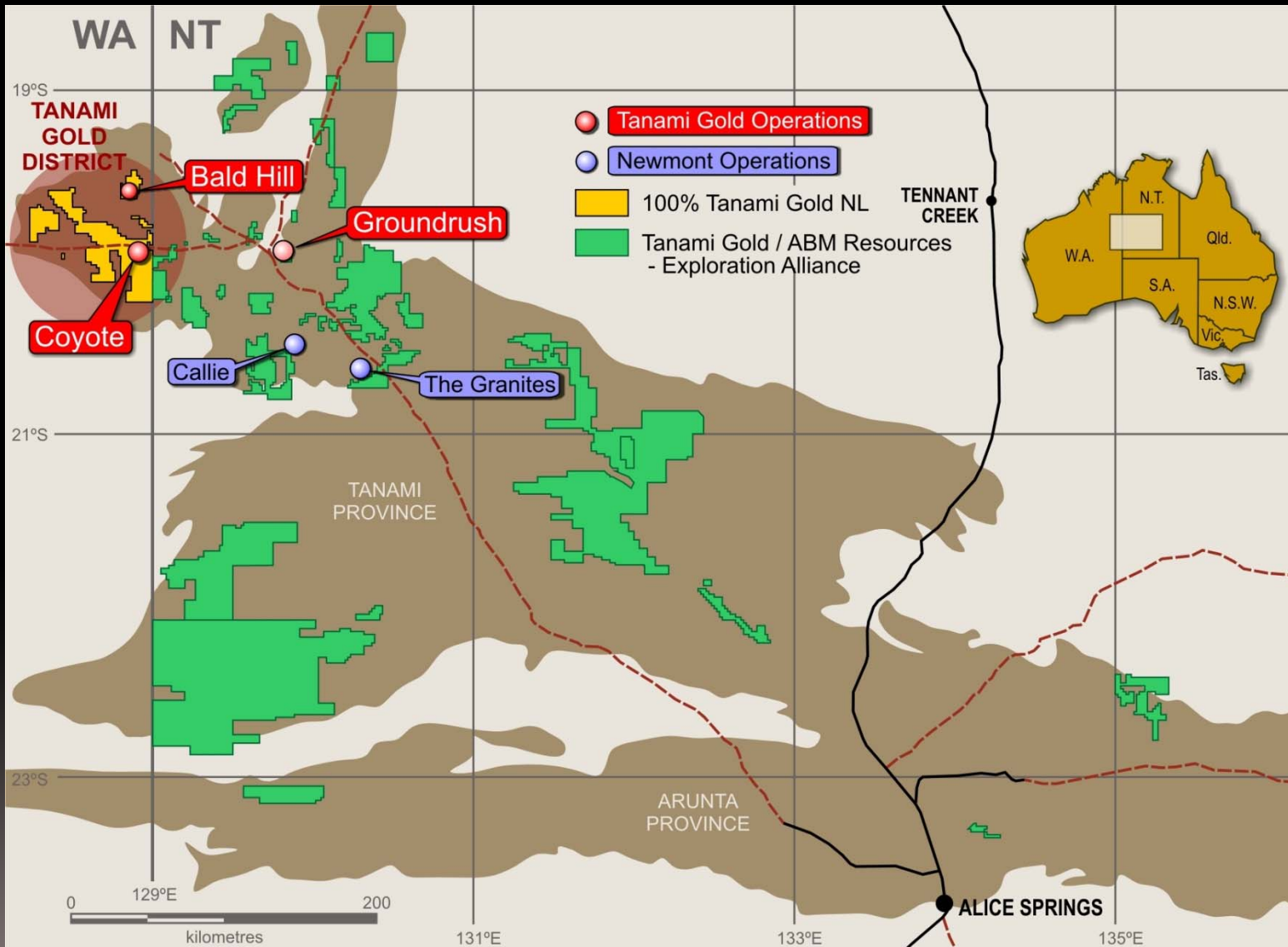
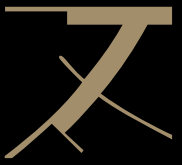




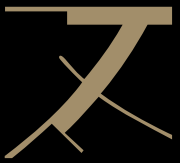
EXPLORATION

Future Growth

Landholding

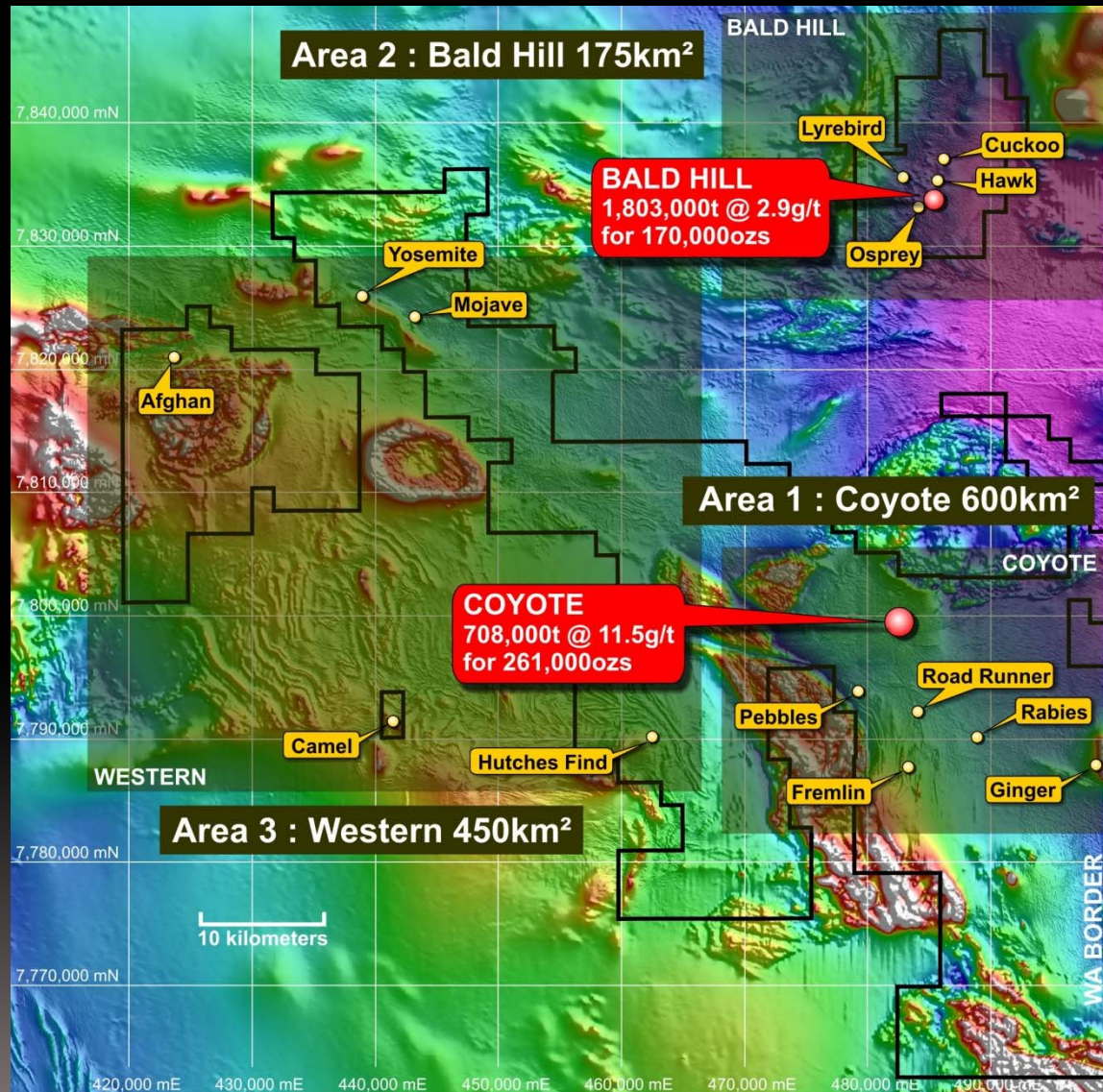
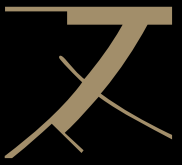


Tanami Gold and ABM Strategic Alliance

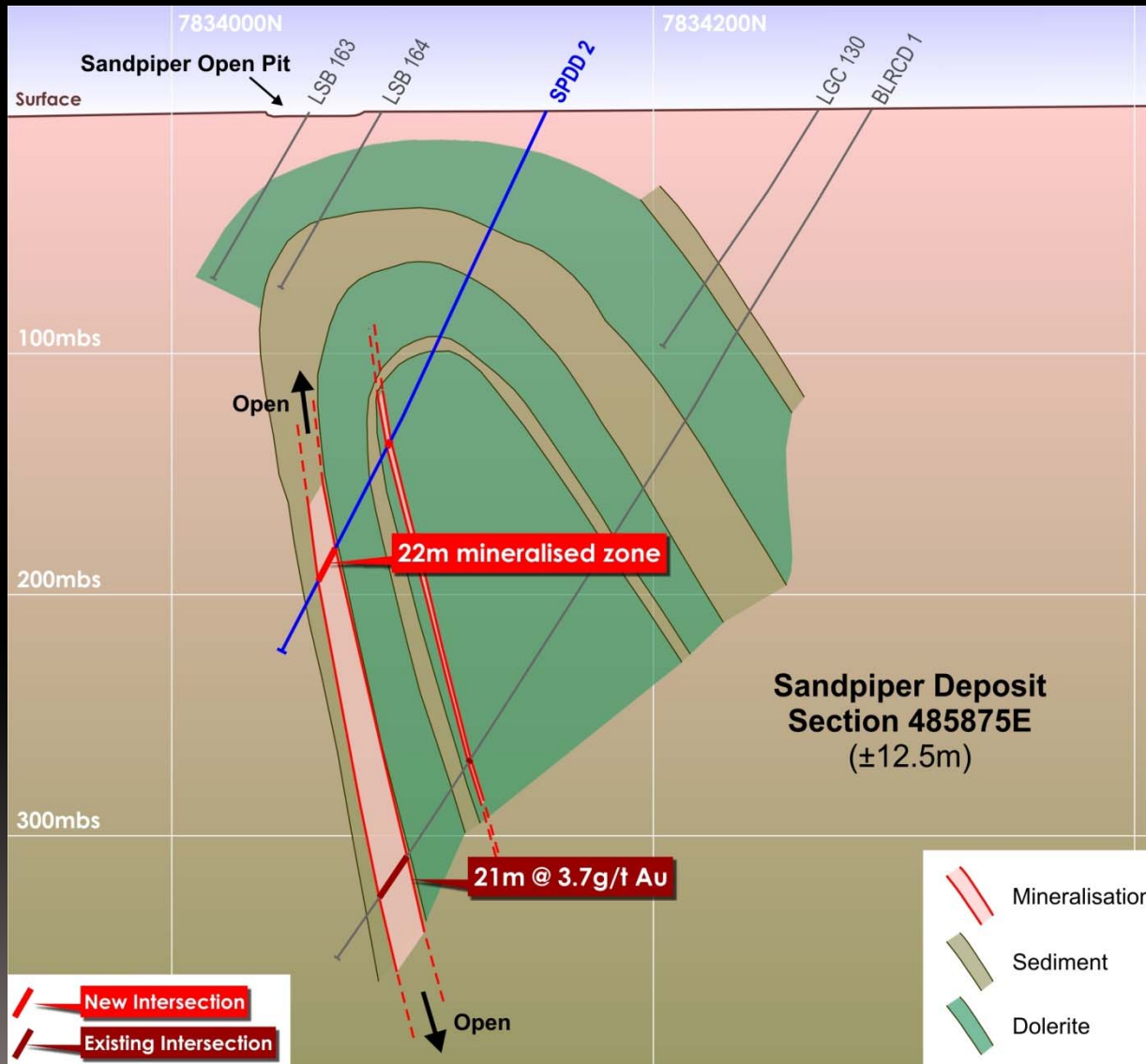
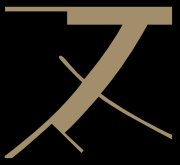


- TAM to retain 22-30% of ABM
- TAM to focus on production & brownfields prospects
- ABM with specialised exploration team to focus on greenfields prospects.
- TAM tenements within 50km trucking distance of process plant
- ABM to spend \$10M over two years
- Strategic Exploration Alliance to fast track exploration in the NT

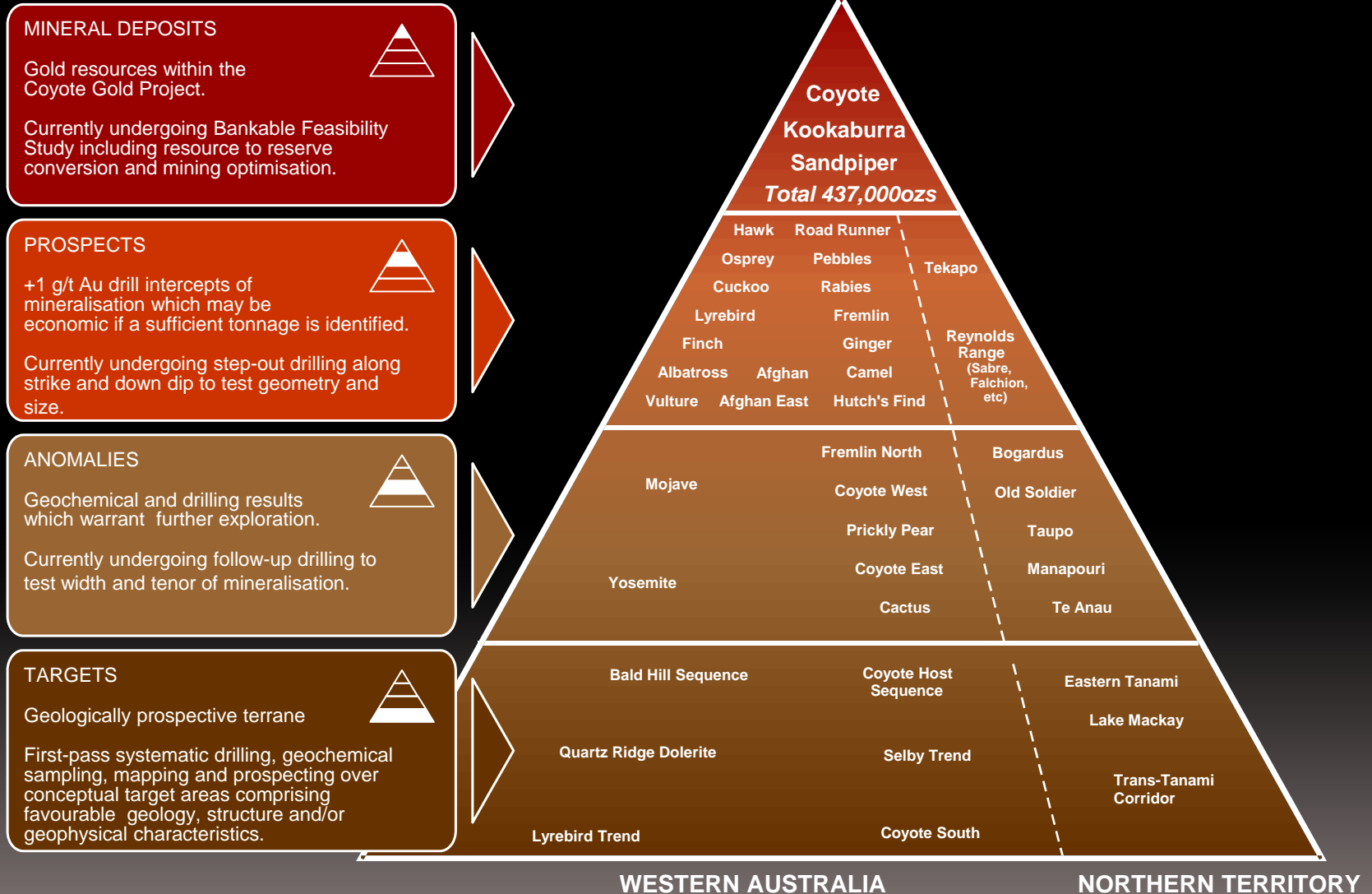
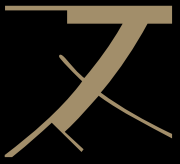
Western Tanami Project



Sandpiper Deposit



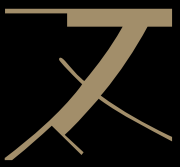
Prospect Pyramid





CENTRAL TANAMI ACQUISITION

The Question, Why?

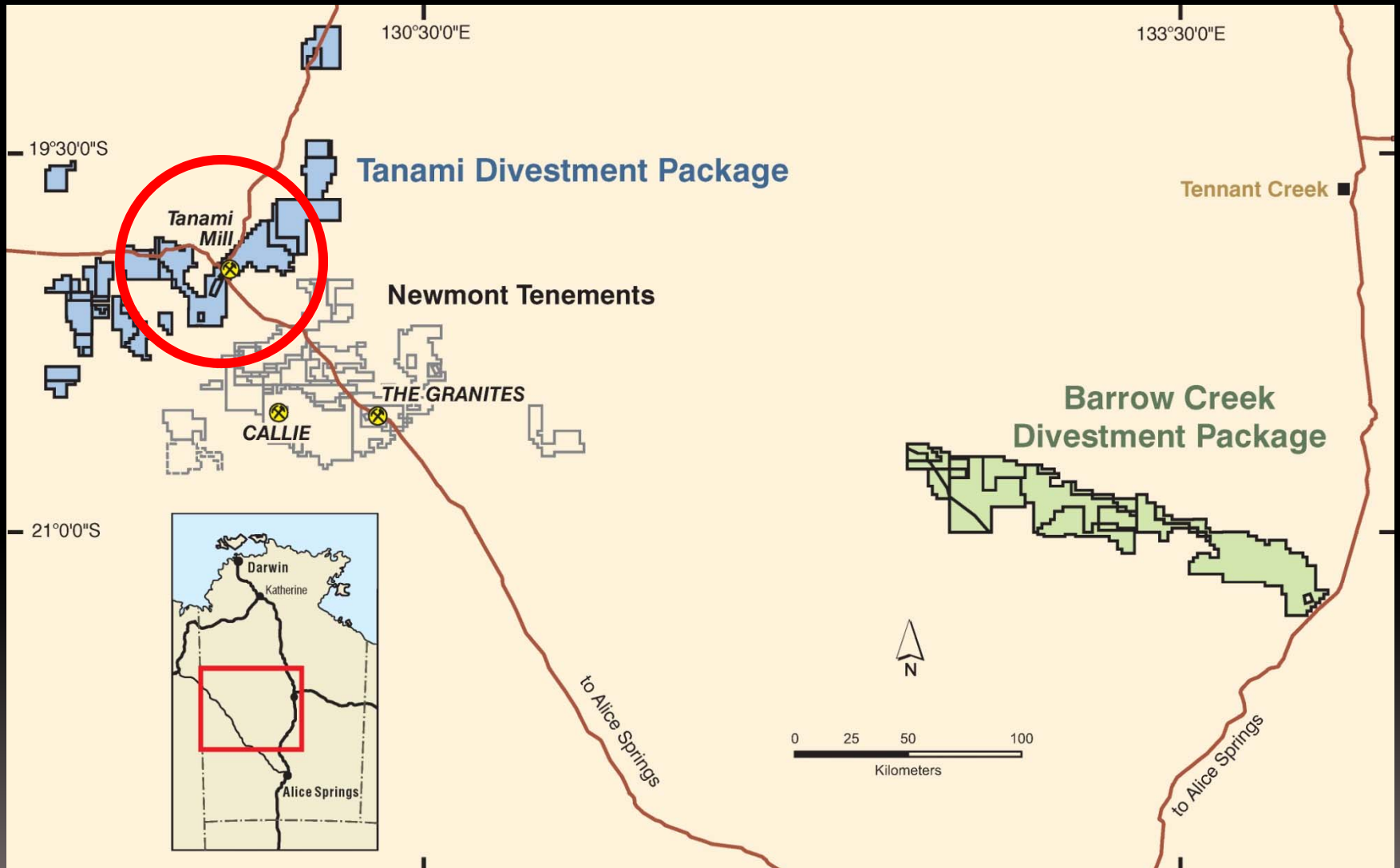
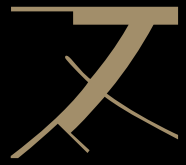


- 516kcozs JORC Code Compliant Resource
- 1.2Mtpa Groundrush process plant
- Extensive support infrastructure
- 2,000 sq kms world class exploration package
- 2.1Moz historic production endowment
- 90 kms from Coyote treatment plant and operations

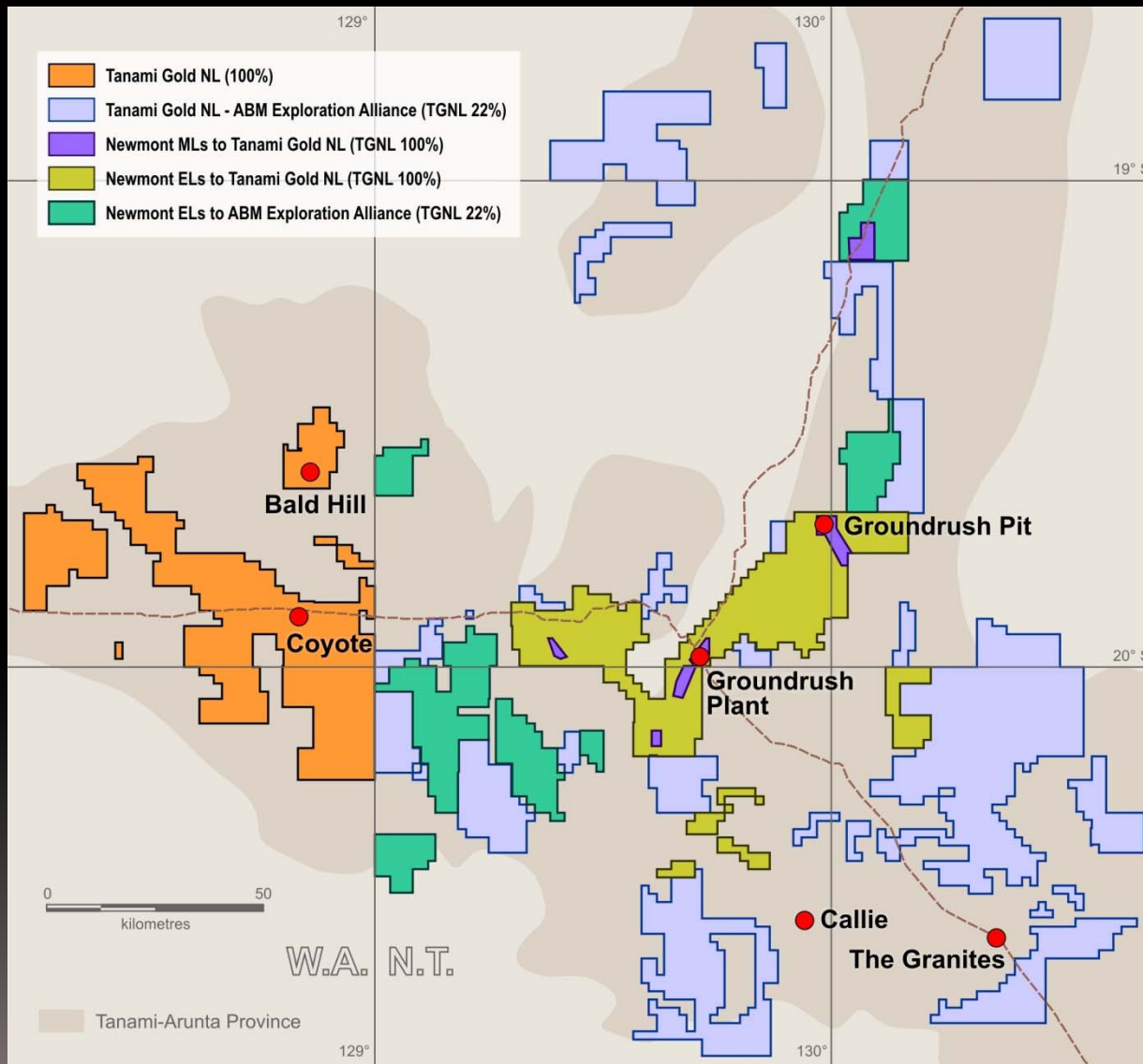


Total \$22M purchase for \$42/oz
Industry average estimate \$30-50/oz

Newmont Divestment Package



Tanami and ABM Tenement Allocation



Tanami Plant and Camp



1.2Mtpa Groundrush process plant

140 person village



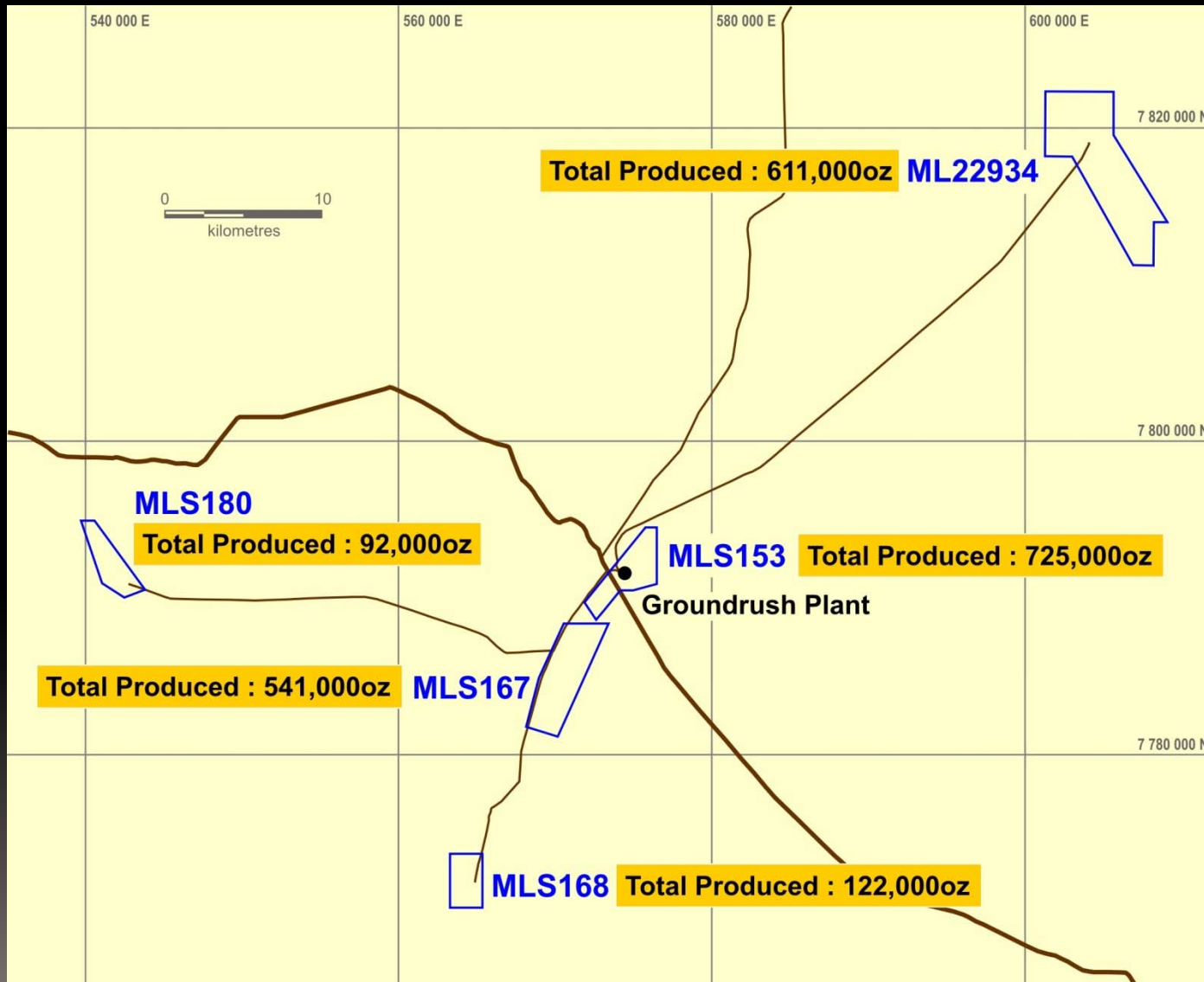
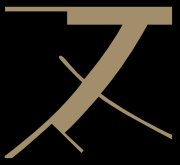
Central Tanami Open Pits



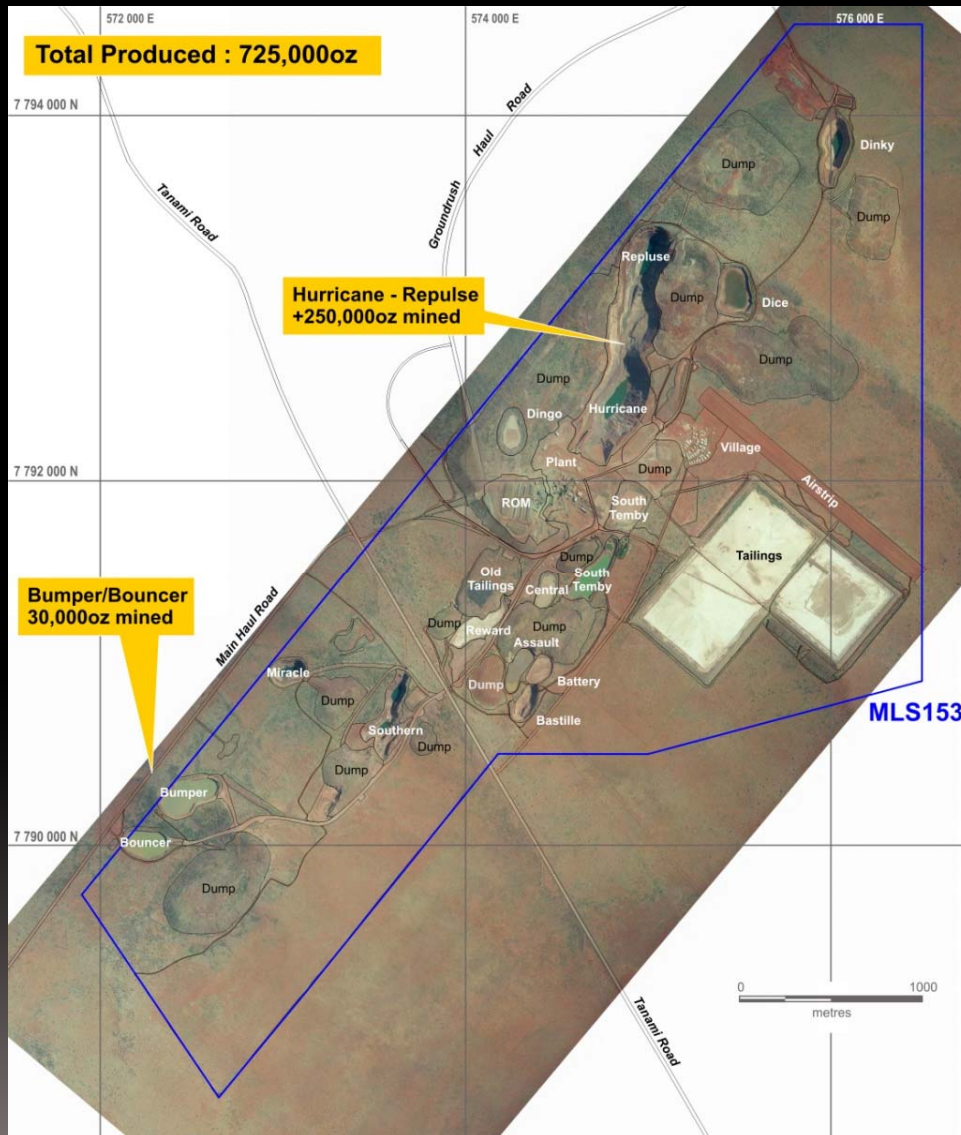
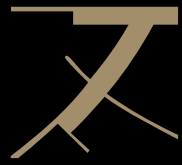
Historic Production
2.1 Million ozs



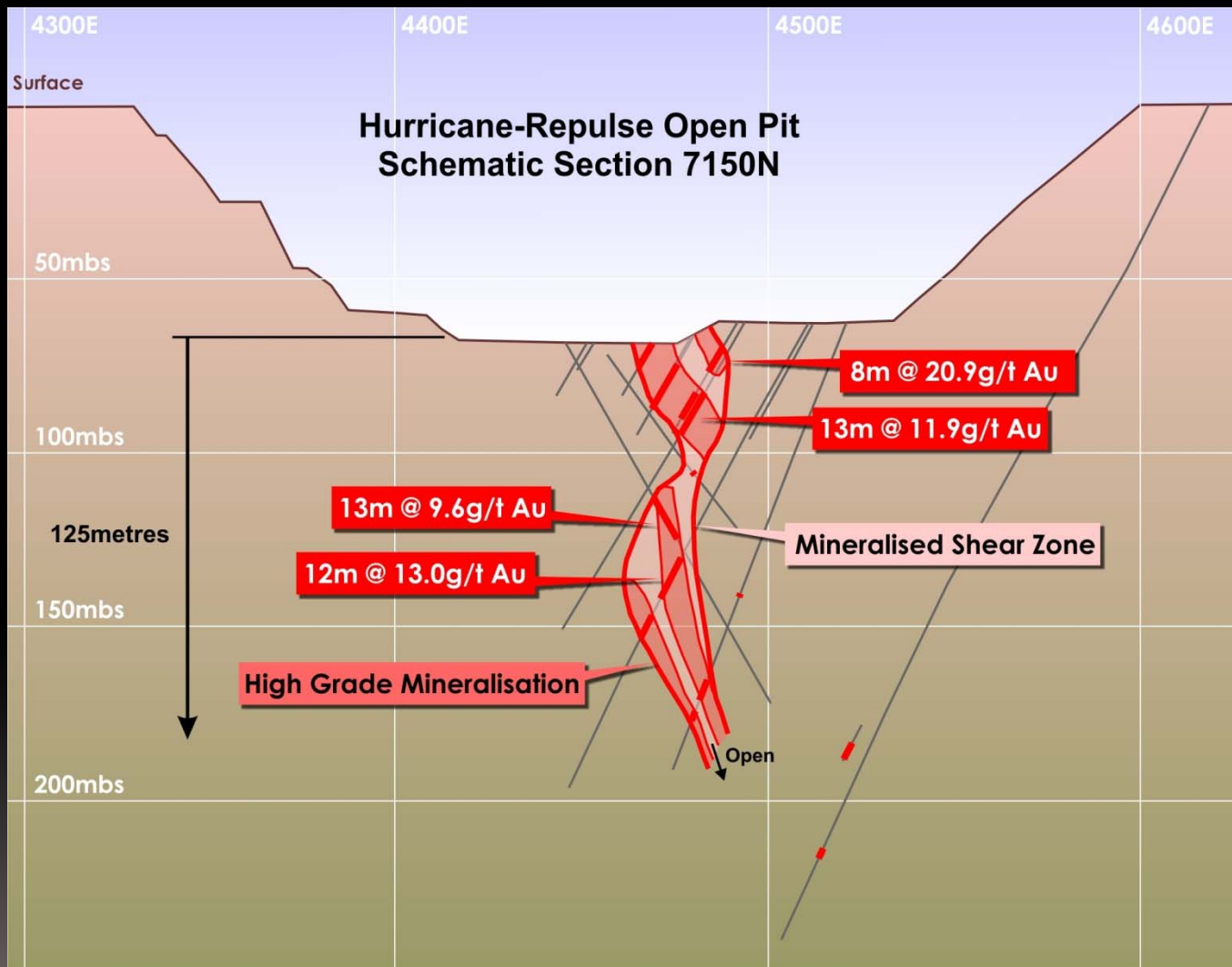
Tanami Historic Production



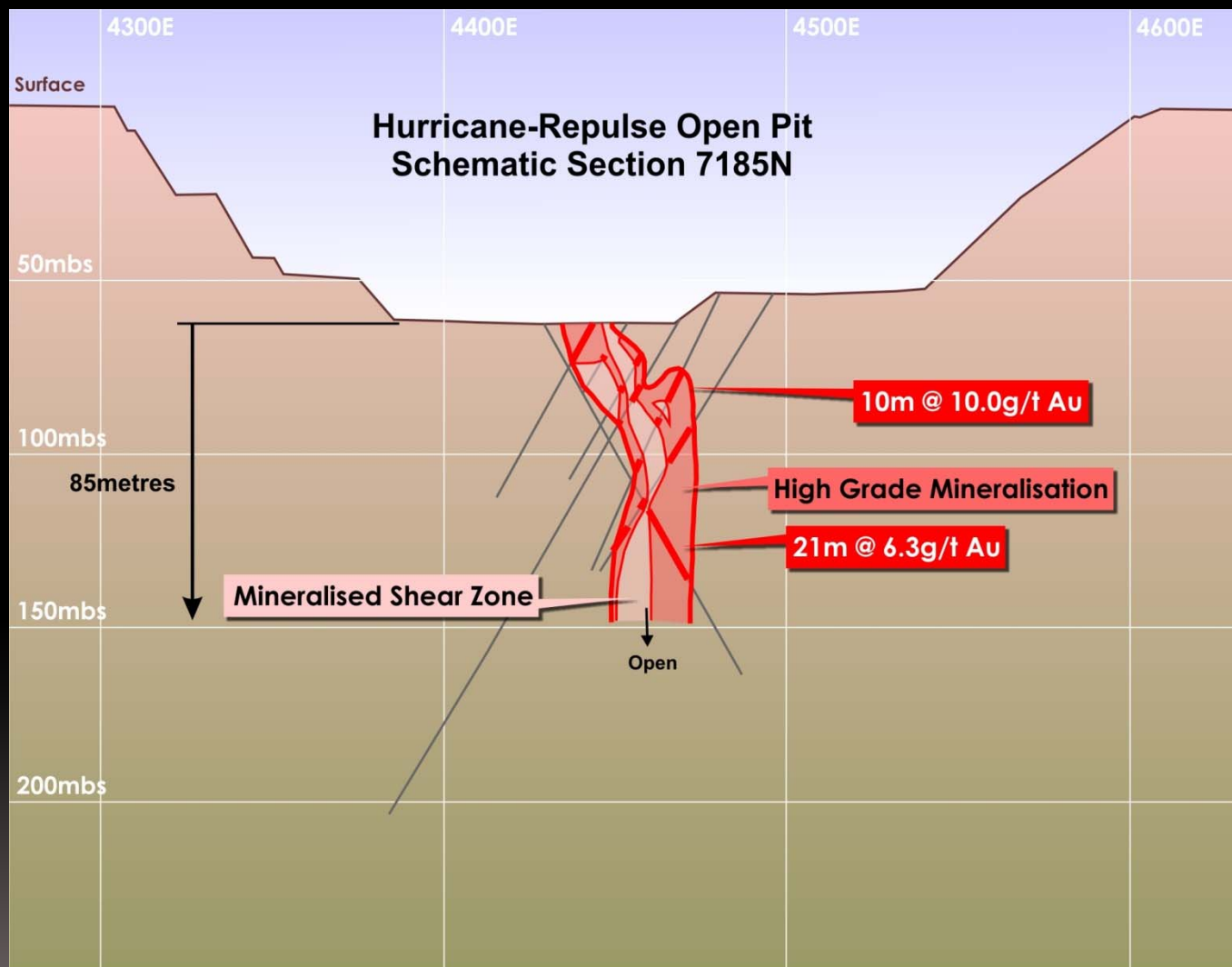
Historic Production MLS 153



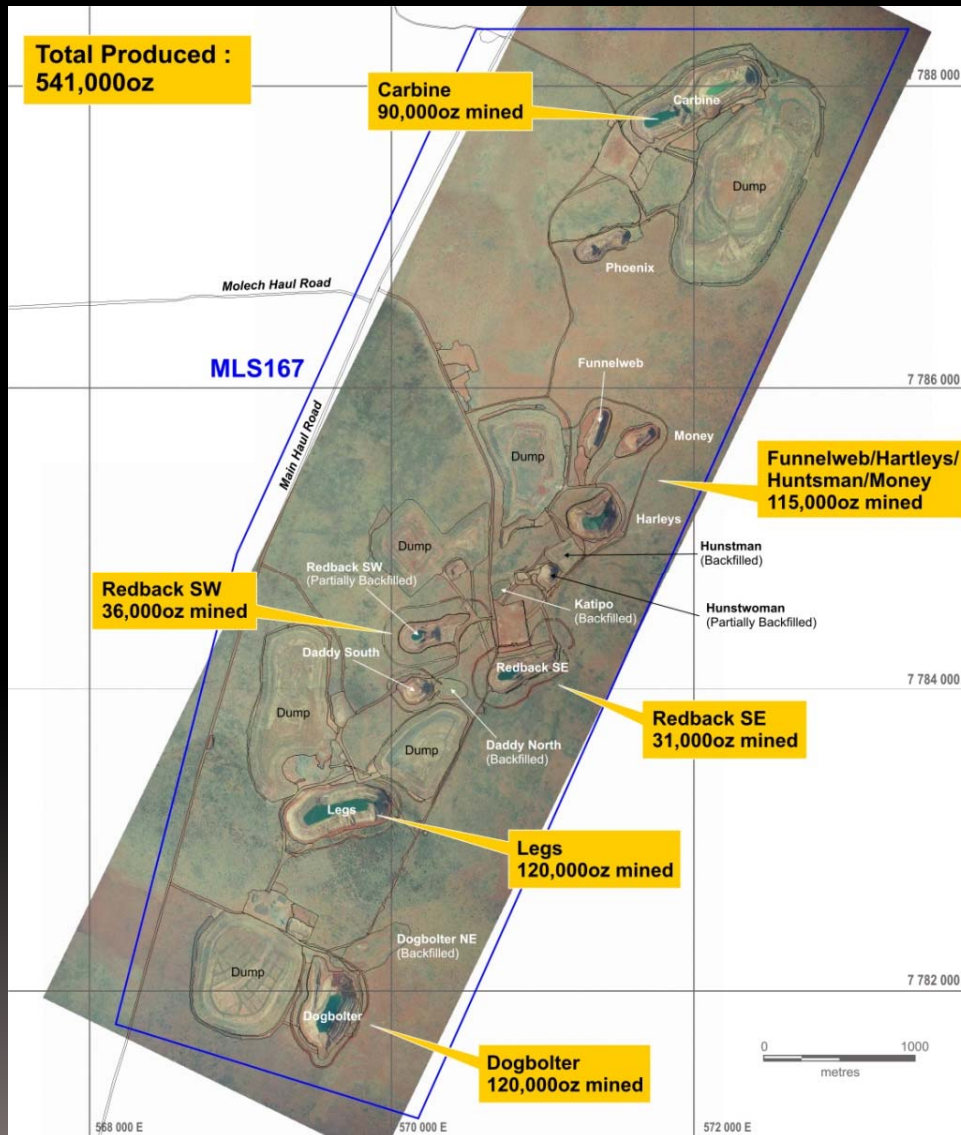
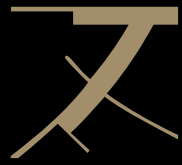
Hurricane-Repulse Schematic Section



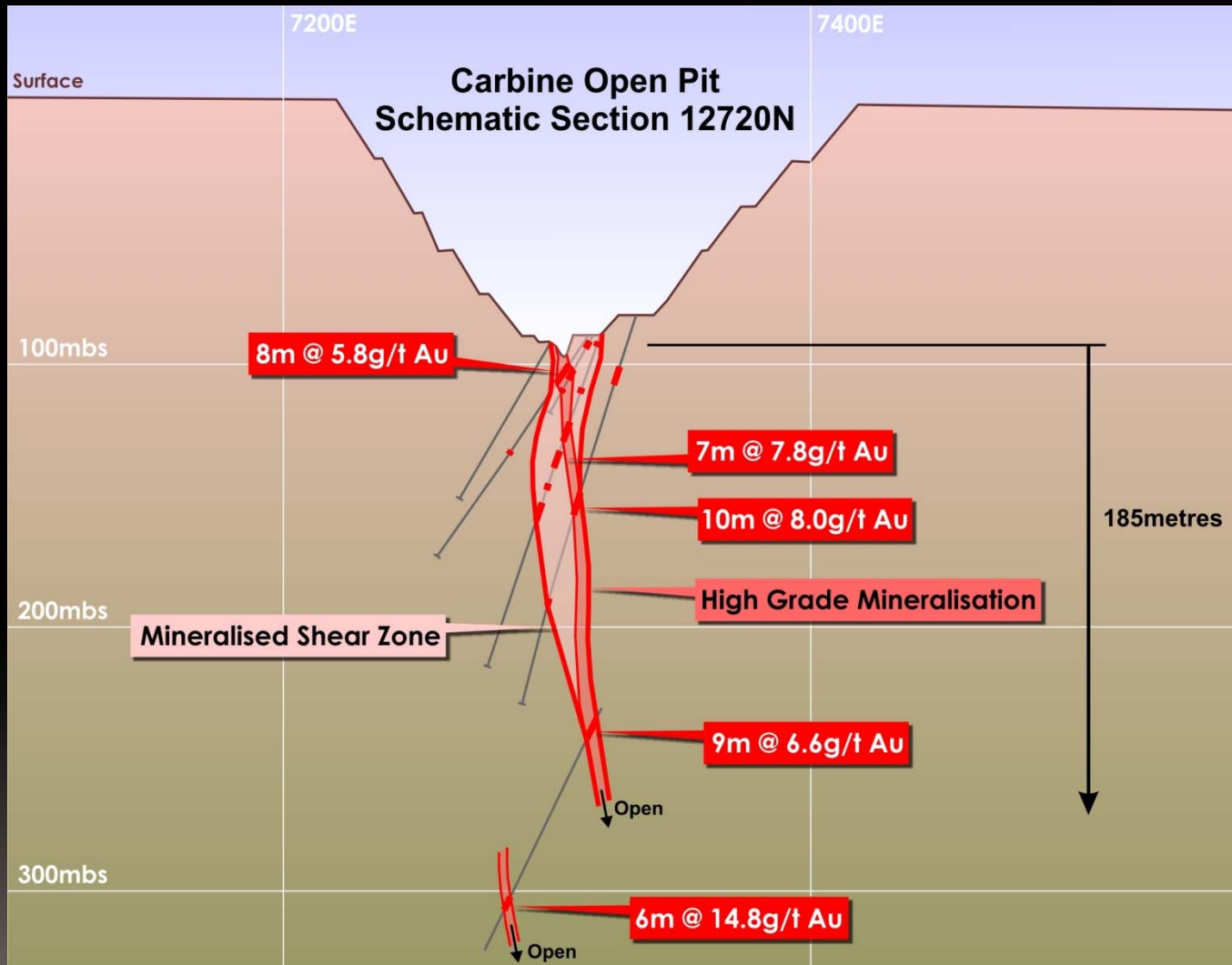
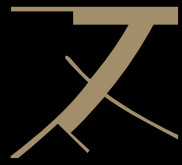
Hurricane-Repulse Schematic Section



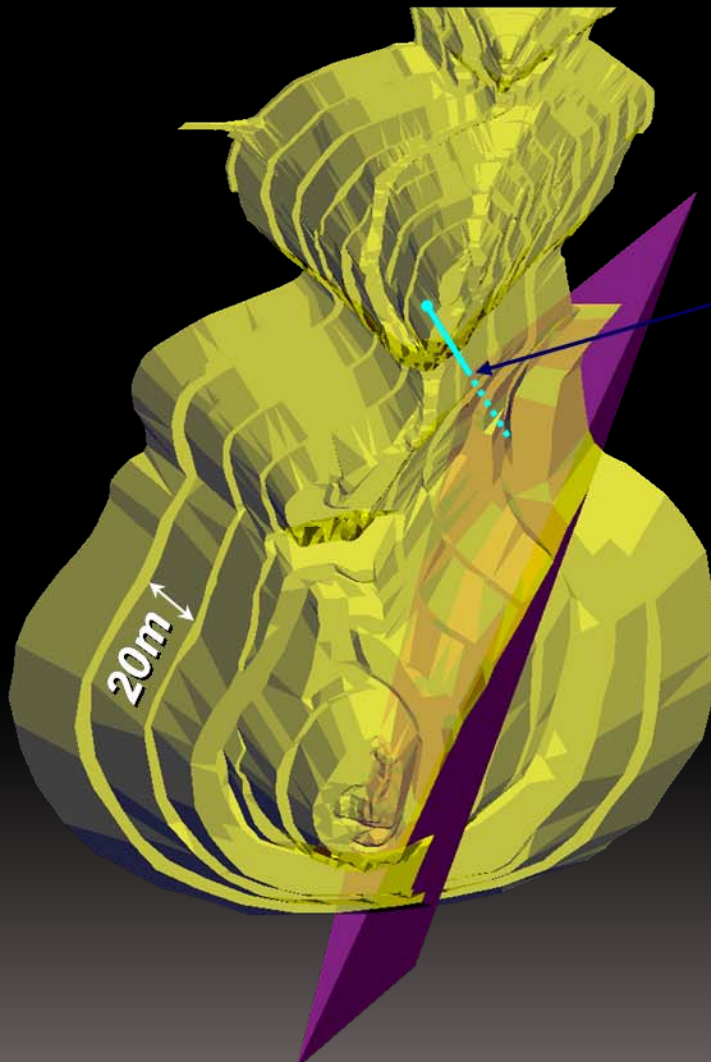
Historic Production MLS 167



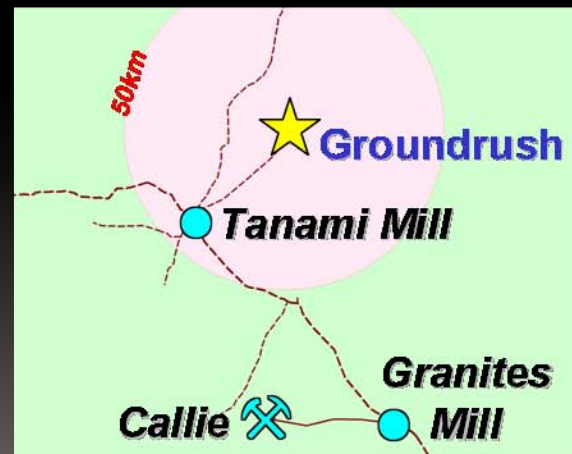
Carbine Schematic Section



ML 22934 Groundrush Pit



GHRC0353
2m @ 30.5 g/t Au



ML 22934 Groundrush Pit

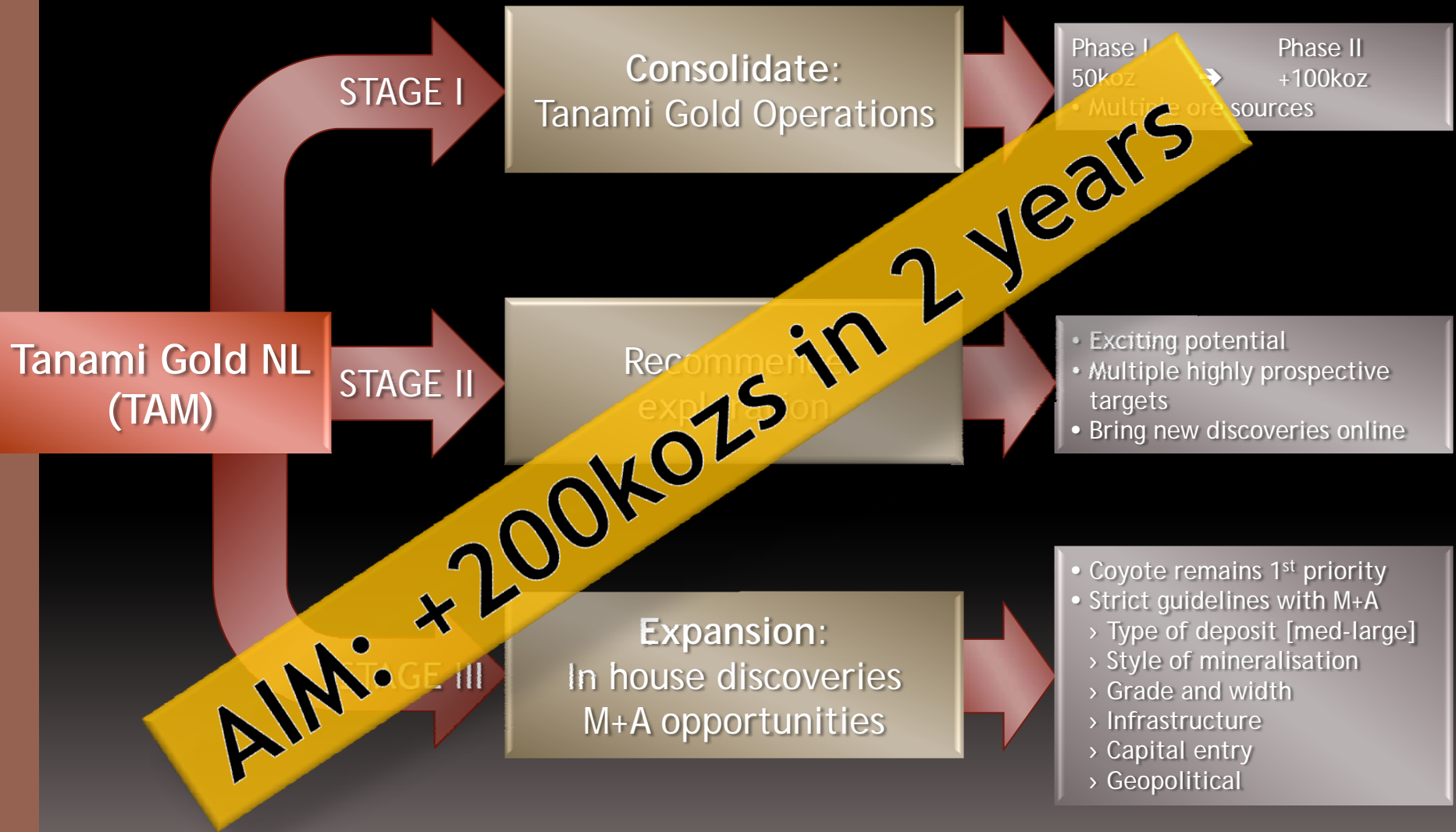
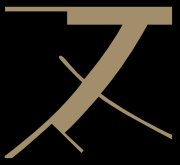


Groundrush Pit looking SE
High Grade Quartz Vein

Groundrush Pit looking NW
High Grade Quartz Vein



Three Stage Growth Strategy



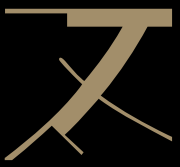
What It's All About!



Questions?



Note



- The information in this report has been compiled by Mr Robert Henderson, MAusIMM and MAIG, a full time employee and Geology Manager of Tanami Gold NL. Mr Henderson has sufficient experience which is relevant to the style of mineralisation and type of deposit under consideration to qualify as a Competent Person as defined in the December 2004 edition of the Australasian Code for Reporting of Exploration Results, Mineral Resources and Ore Reserves (JORC Code). Mr Henderson consents to the inclusion in the report of the matters based on his information in the form and context in which they appear.