



TANAMI
GOLD NL

ASX:TAM



Production, Performance, Potential...

Building a 200,000oz per annum Australian gold producer

April 2010

Disclaimer & Forward-Looking Statements

- Certain statements contained in this presentation, including information as to the future financial or operating performance of Tanami Gold NL and its projects, are forward-looking statements. Such forward-looking statements:
 - *are necessarily based upon a number of estimates and assumptions that, while considered reasonable by Tanami Gold NL, are inherently subject to significant technical, business, economic, competitive, political and social uncertainties and contingencies;*
 - *involve known and unknown risks and uncertainties that could cause actual events or results to differ materially from estimated or anticipated events or results reflected in such forward-looking statements; and*
 - *may include, among other things, statements regarding targets, estimates and assumptions in respect of metal production and prices, operating costs and results, capital expenditures, mineral reserves, mineral resources, anticipated grades, recovery rates, and are or may be based on assumptions and estimates related to future technical, economic, market, political, social and other conditions.*
- Tanami Gold NL disclaims any intent or obligation to update publicly any forward-looking statements whether as a result of new information, future events or results or otherwise.
- The words 'believe', 'expect', 'anticipate', 'indicate', 'contemplate', 'target', 'plan', 'intends', 'continue', 'budget', 'estimate', 'may', 'will', 'schedule' and similar expressions identify forward-looking statements.
- All forward-looking statements made in this presentation are qualified by the foregoing cautionary statements. Investors are cautioned that forward-looking statements are not guarantees of future performance and accordingly investors are cautioned not to put undue reliance on forward-looking statements due to the inherent uncertainty therein.

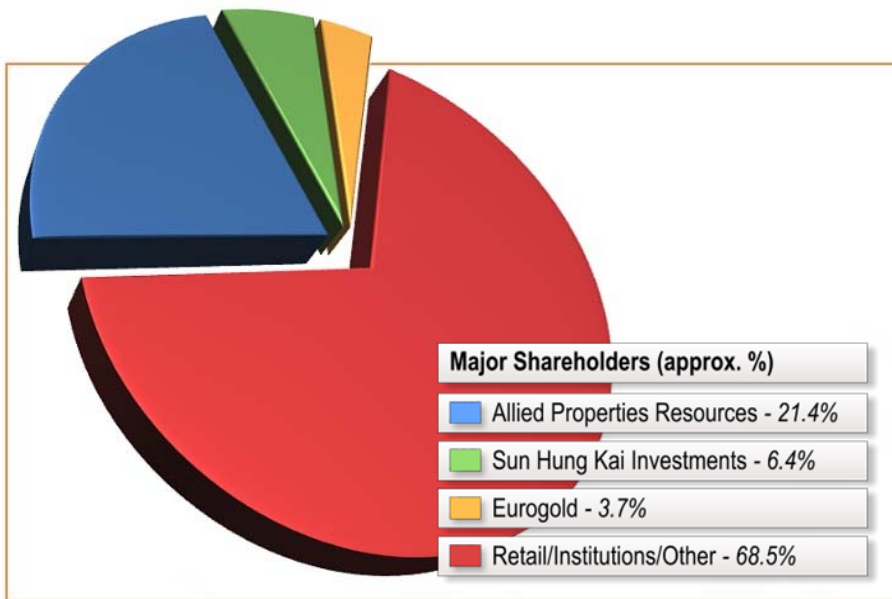
Competent Person's Statement

The information in this report has been compiled by Mr Robert Henderson, MAusIMM and MAIG, a full time employee and Geology Manager of Tanami Gold NL. Mr Henderson has sufficient experience which is relevant to the style of mineralisation and type of deposit under consideration to qualify as a Competent Person as defined in the December 2004 edition of the Australasian Code for Reporting of Exploration Results, Mineral Resources and Ore Reserves (JORC Code). Mr Henderson consents to the inclusion in the report of the matters based on his information in the form and context in which they appear.

A Snapshot...

- Unhedged 50,000oz pa production at Western Tanami Operations (WA):
 - *Aiming to grow production by 20-50% with plant upgrade*
- \$22M acquisition of Central Tanami Gold Project from Newmont:
 - *JORC resource of 516,000oz and 1.2Mtpa treatment plant*
- Targeting 200,000oz pa production within 24 months
- Exploration program delivering results:
 - *Upgraded JORC Code Resource inventory for Central and Western Tanami*
 - *~5,000 sq km exploration portfolio in highly prospective Tanami-Arunta Province*
- Strategic exploration alliance with ABM Resources NL ["ABM"]

Item	Value
Share Price	5.6 cents ¹
Shares Outstanding	3.54 billion
Market Capitalisation	\$198.0 million
Cash and cash equivalents	\$9.8 million ²
Debt	\$52.5 million ²
Enterprise Value	\$221 million ²



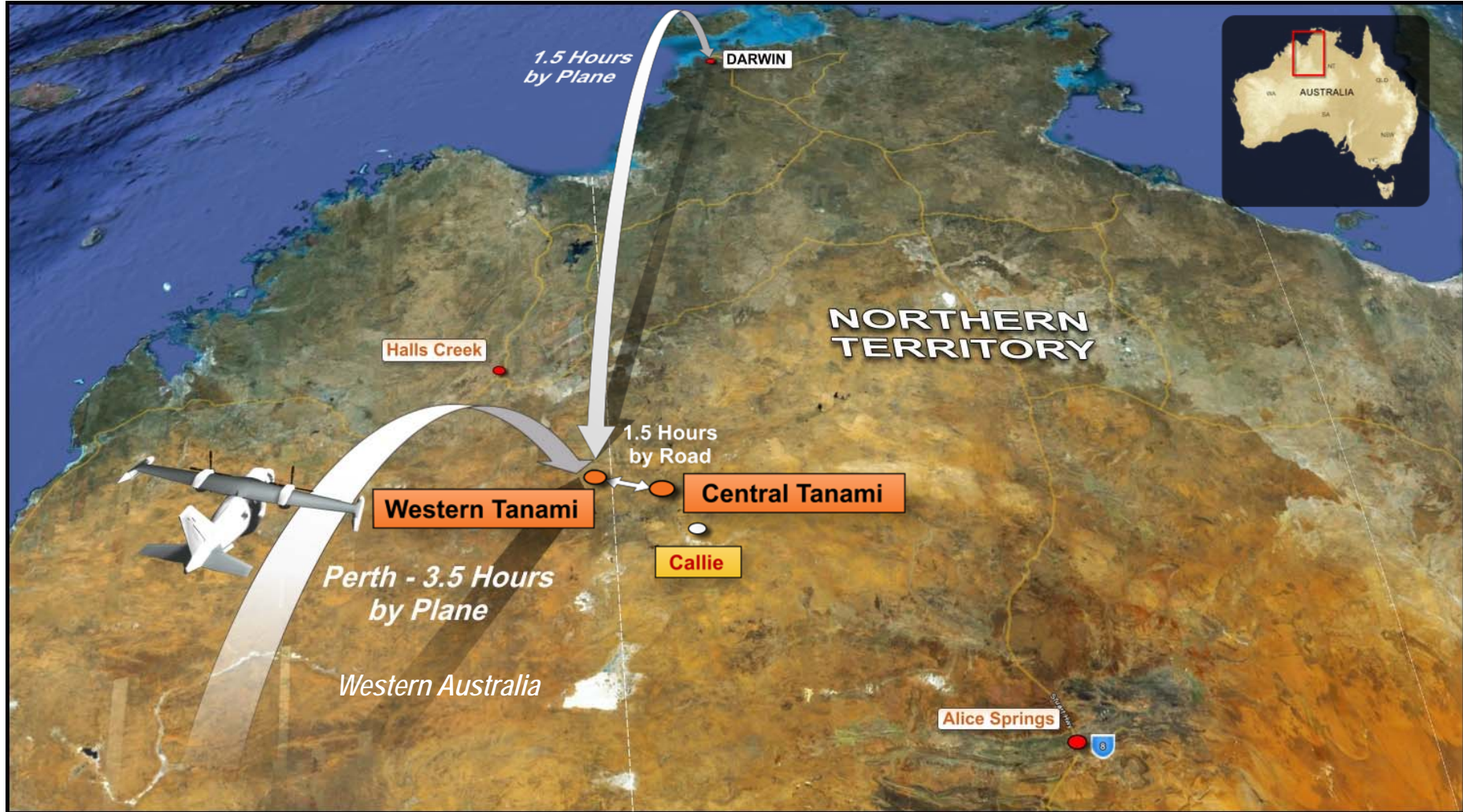
Board

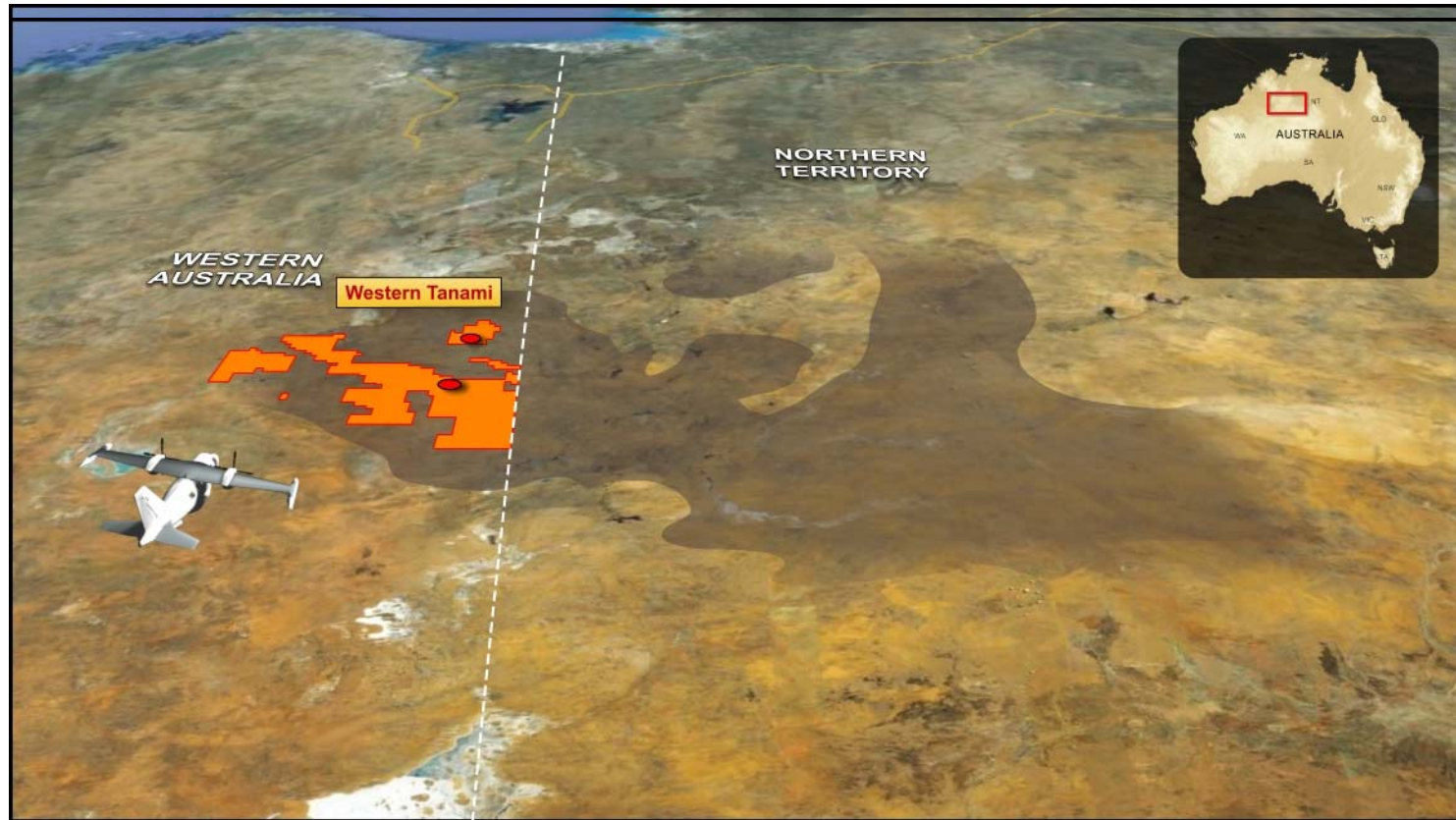
- Denis Waddell – *Non Executive Chairman*
- Graeme Sloan – *Managing Director*
- Alan Senior – *Non-Executive Director*
- Lee Seng Hui – *Non-Executive Director*

Note 1 - Share price at 16 April 2010

Note 2 - As at 31 March 2010

Location of Tanami Operations



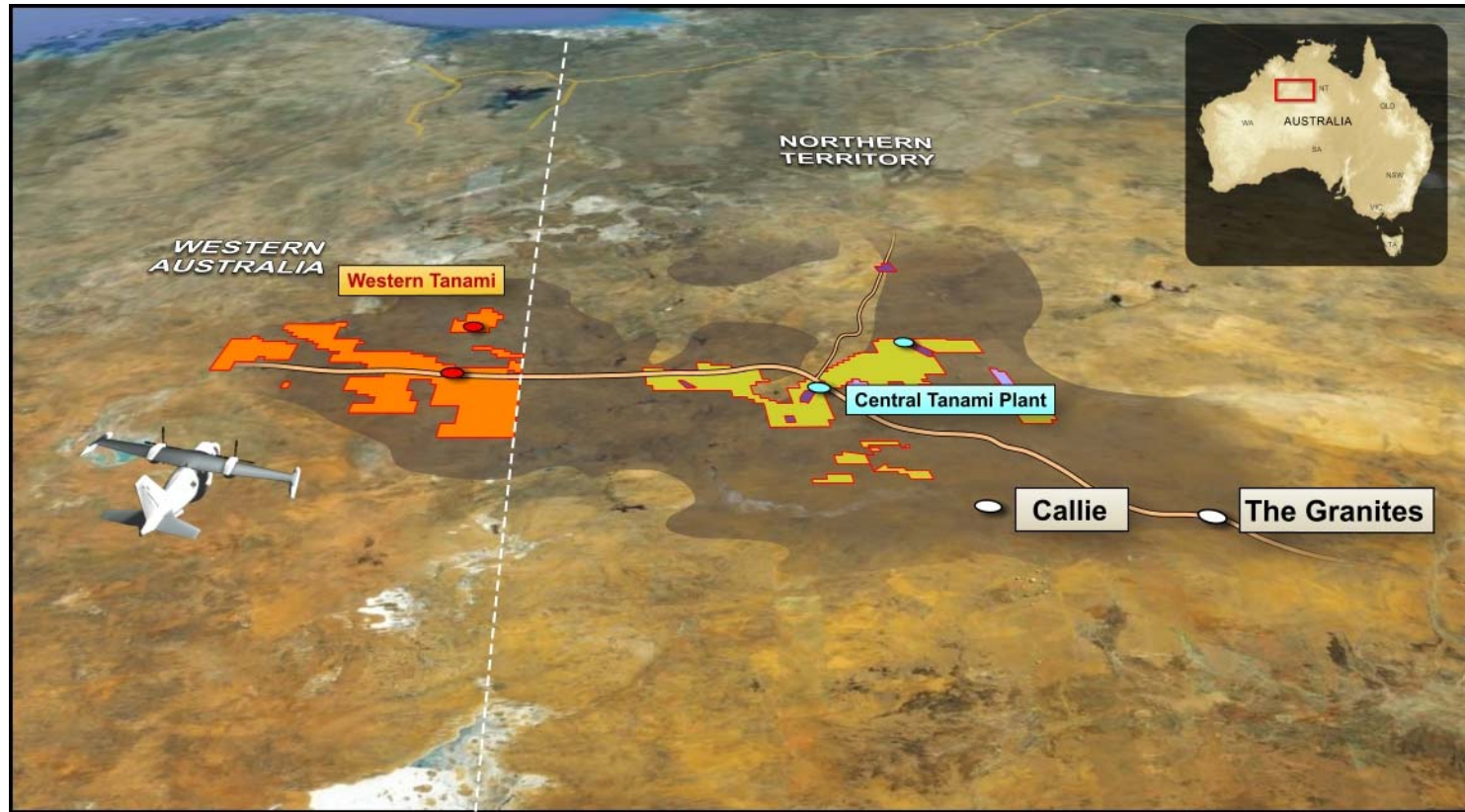


- **Western Tanami Operations**

- *250,000 tpa treatment plant*
- *50,000oz pa production*
- *422,000oz resources @ 5.3g/t Au*

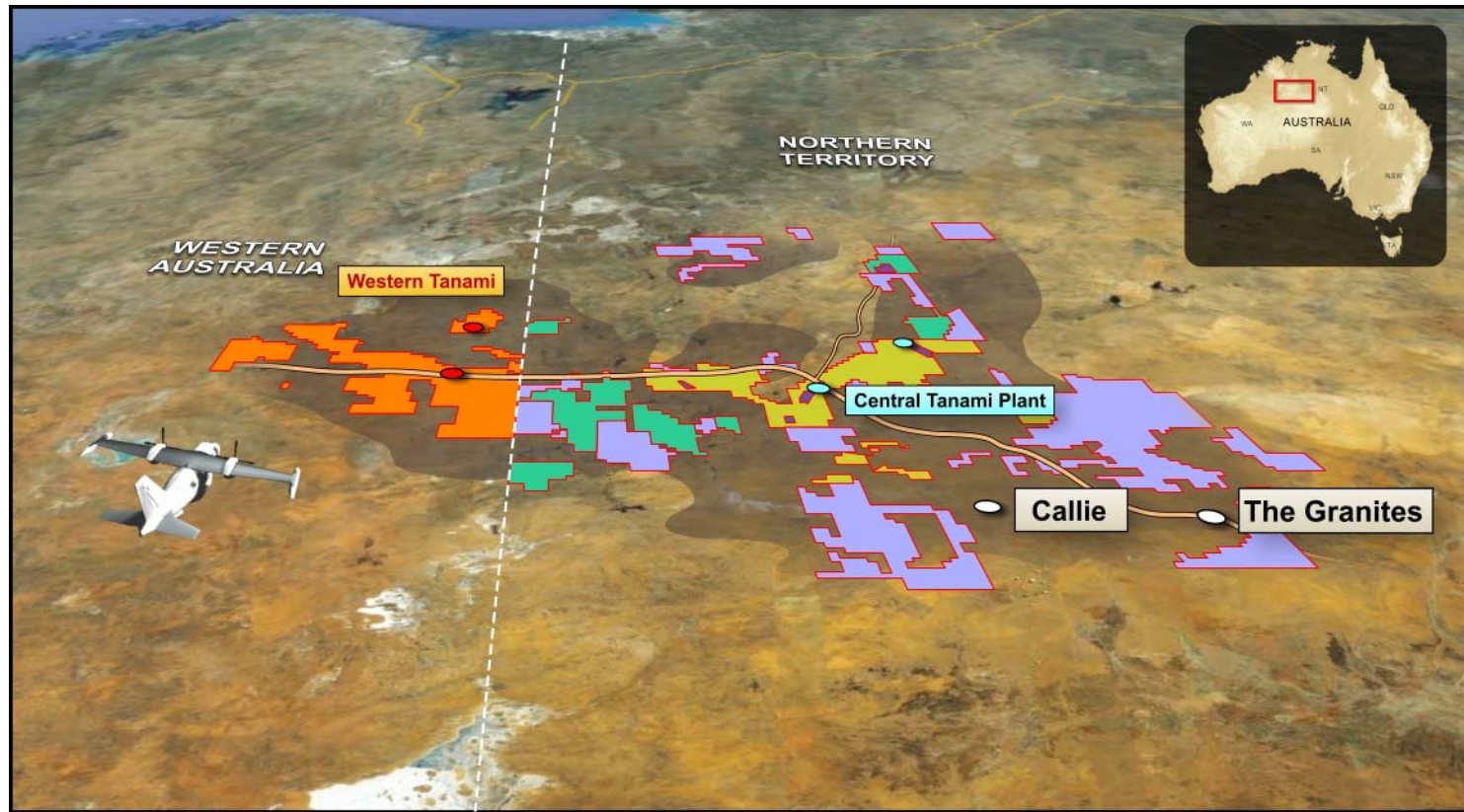
- **Exploration Portfolio (100%)**

- *~ 2,500 km² of tenements*
- *Focus on production & brownfields prospects*
- *Multiple prospects within 50km of treatment plant*



■ Central Tanami Project

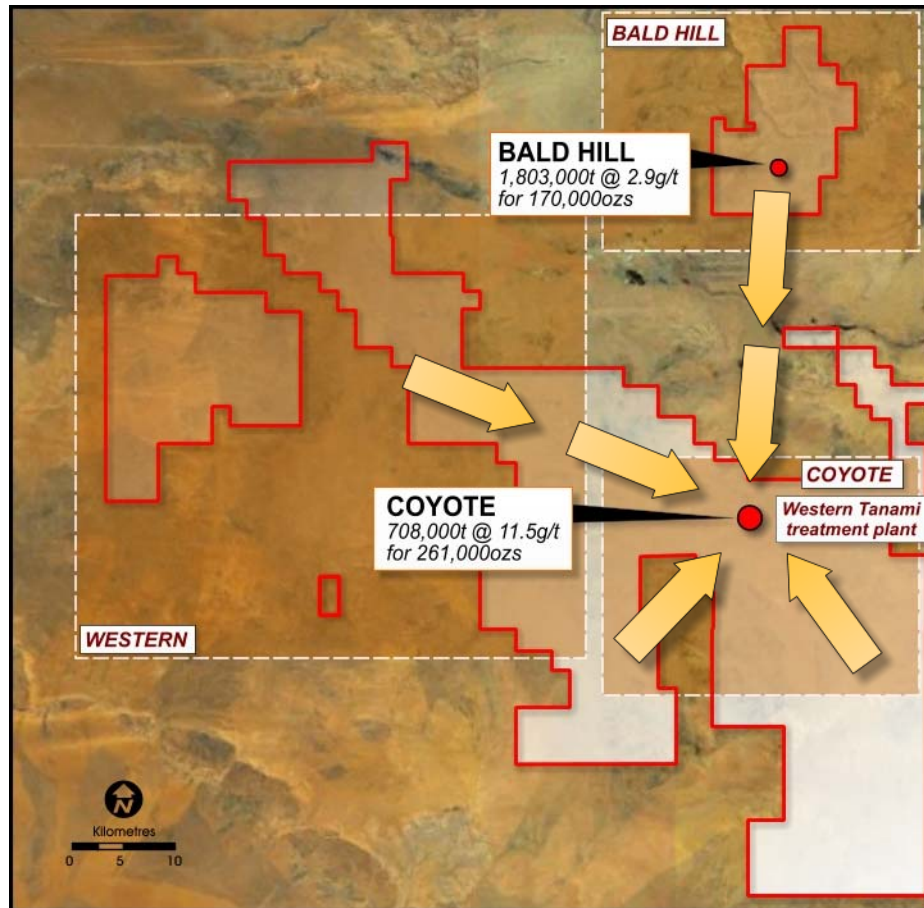
- *Purchase price \$43/oz [no value assigned to treatment plant/infrastructure/exploration]*
- *1.2Mtpa treatment plant*
- *Extensive infrastructure*
- *516,000oz resources @ 2.7g/t Au (Oct 2001)*
- *~ 2,000km² of exploration tenements*



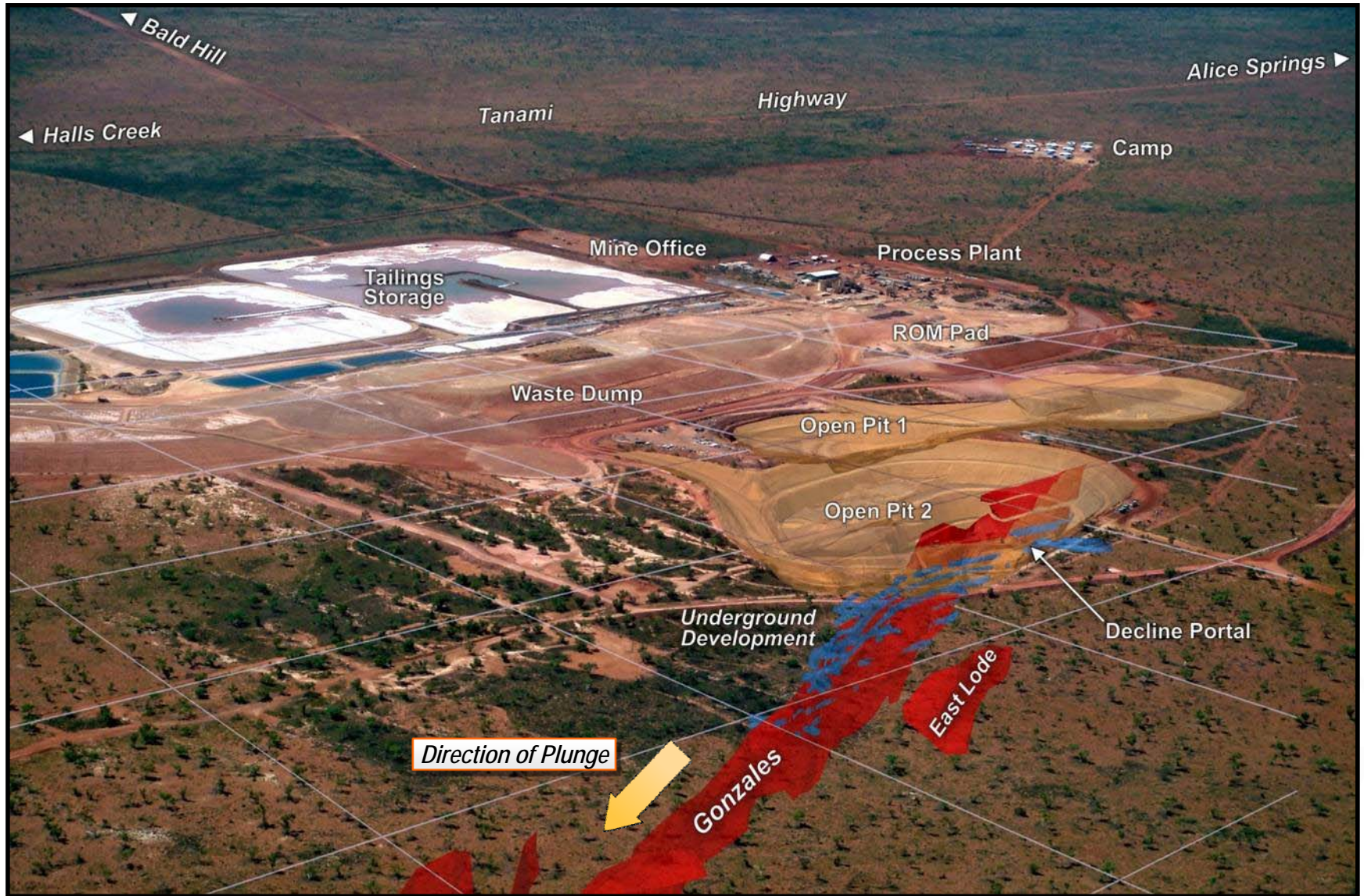
22% Ownership of ABM Resources NL

- *~30,000 km² of exploration tenements*
- *ABM spending \$10M in two years*
- *Specialised exploration team to focus on greenfields prospects*

- ~ 50,000oz pa production
- Ore sourced from high-grade Coyote U/G and Bald Hill open pit operations *[Sandpiper & Kookaburra]*
- Surface ore ROM +100kt @ 2.7g/t
- Proposed upgrade of Western Tanami treatment plant [350Ktpa - 650Ktpa]
- Significant new discoveries at Coyote U/G with deepest mining 220 mbs
- Recent exploration success at Sandpiper points to future U/G potential

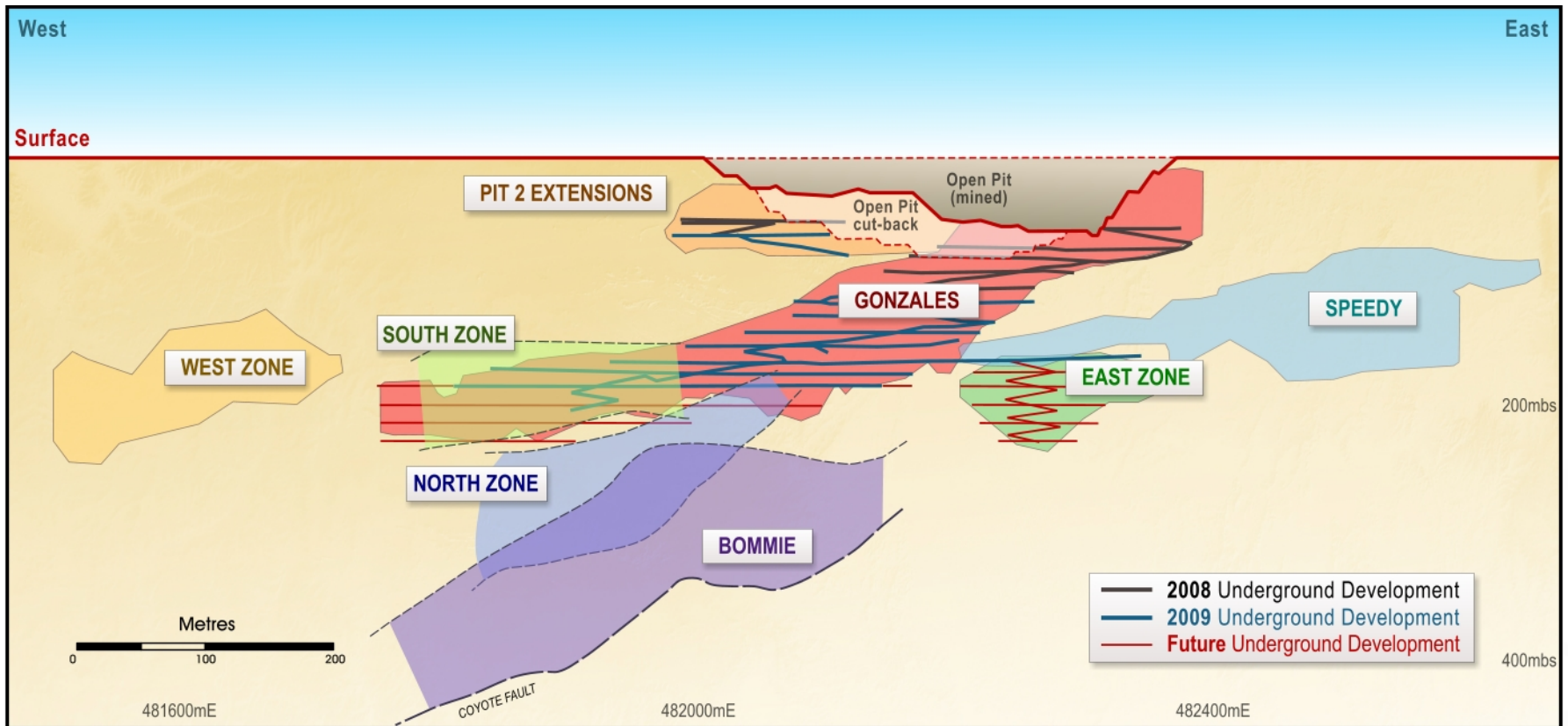


Western Tanami Operations



Coyote – Schematic Long Section

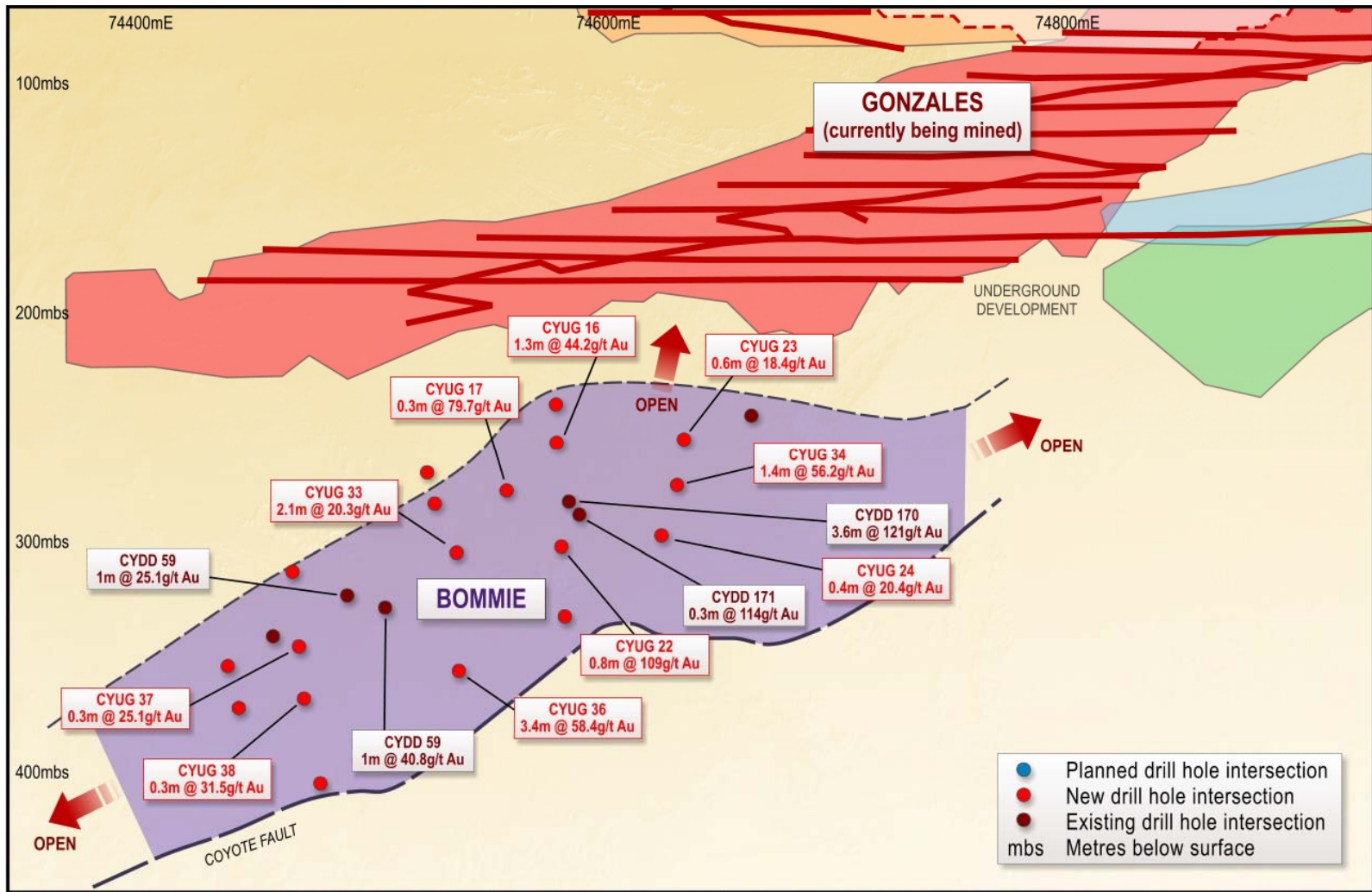
- High-grade mine with outstanding growth potential



- Indicated and Inferred Resources of 629,000 tonnes @ 12.2g/t Au for 246,000oz (30 June 2009)*

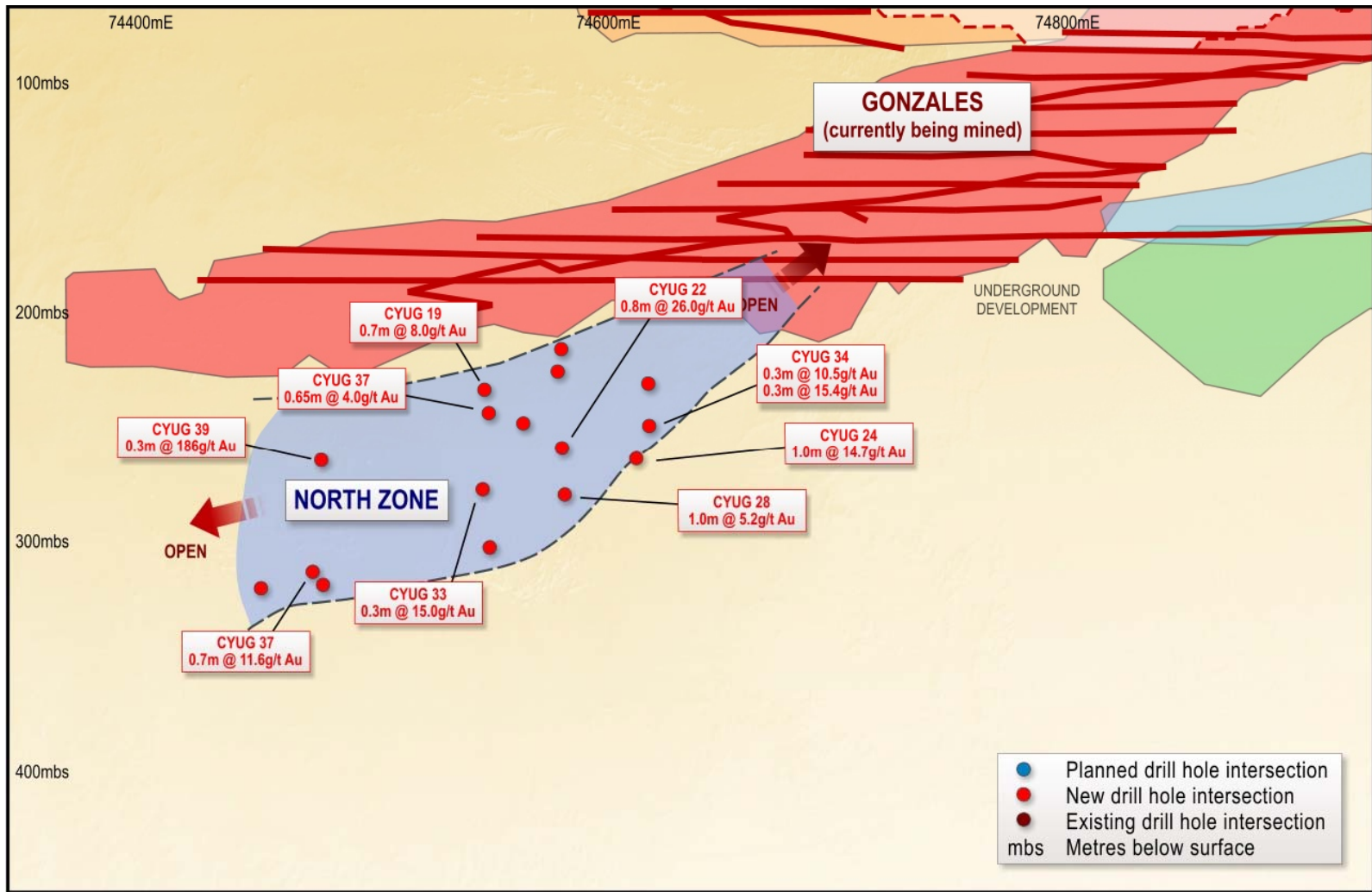
Coyote – Schematic Long Section

- A high-grade mine with outstanding growth potential



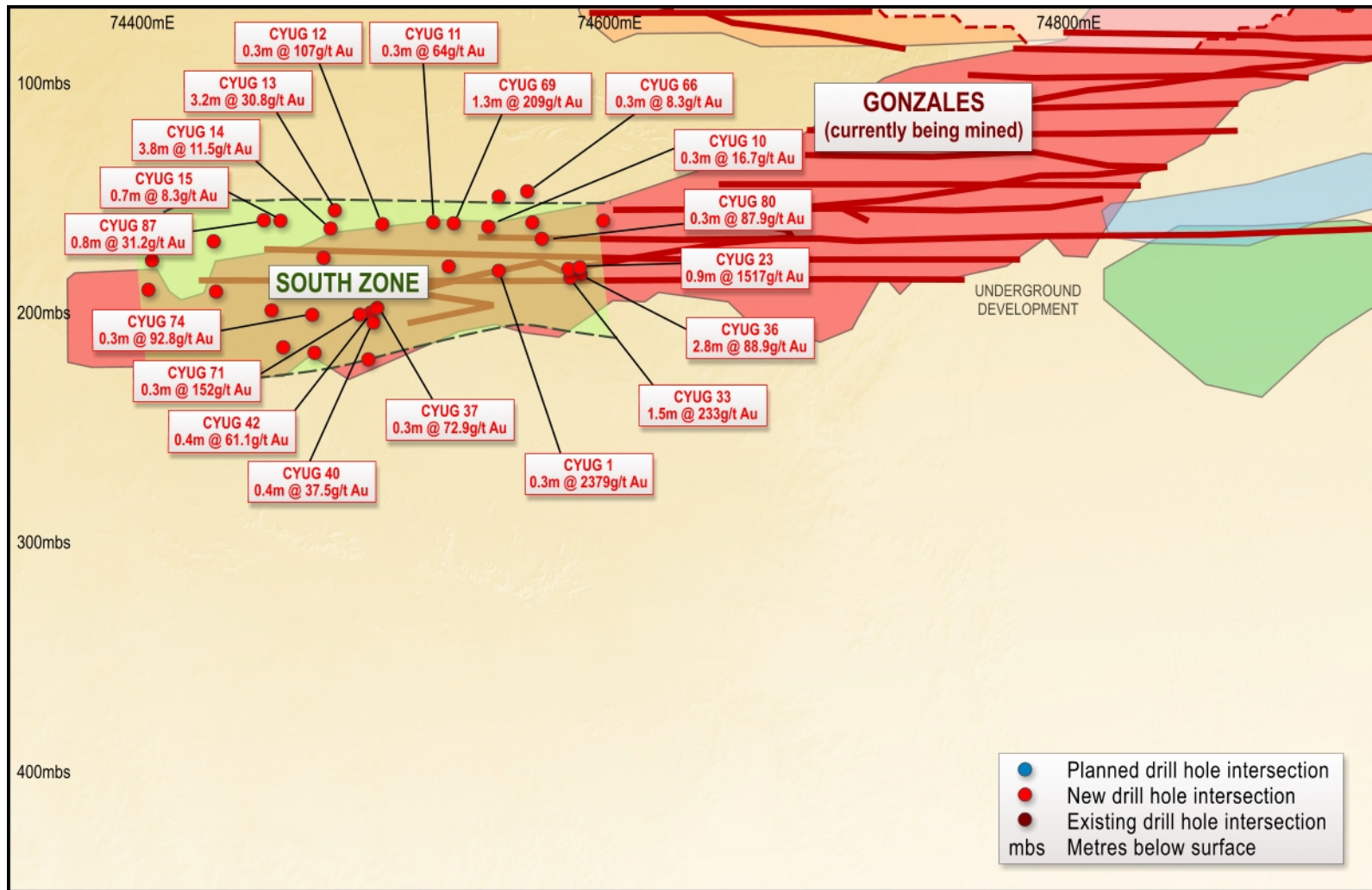
Coyote – Schematic Long Section

- A high-grade mine with outstanding growth potential

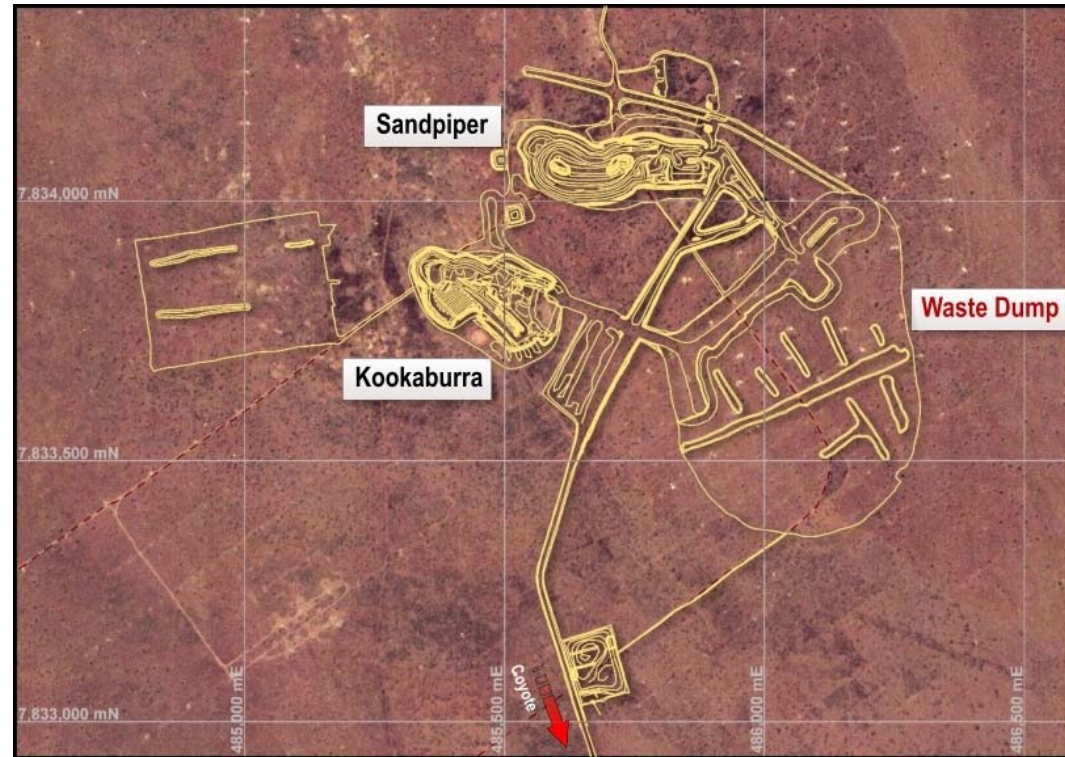


Coyote – Schematic Long Section

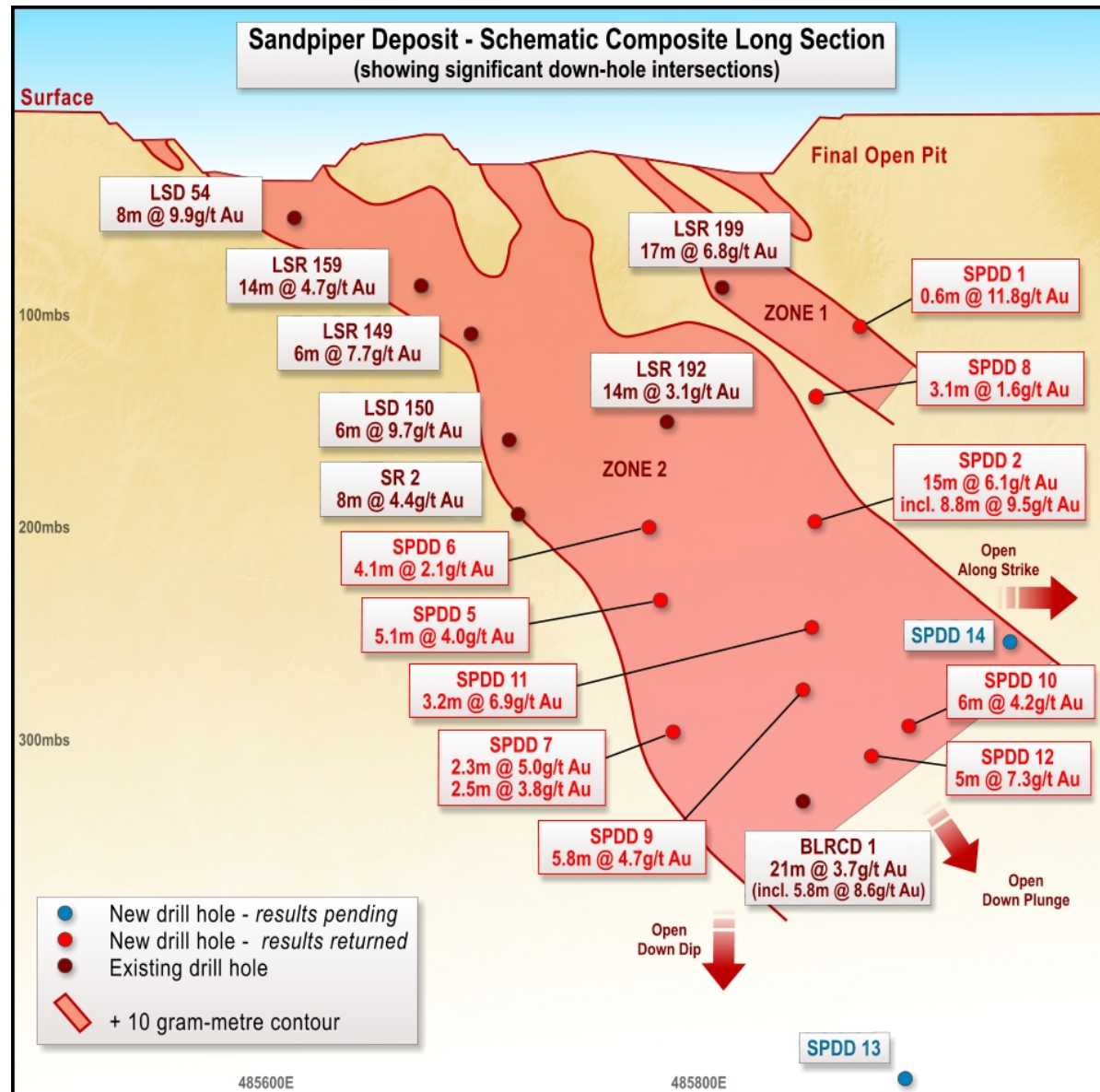
- A high-grade mine with outstanding growth potential



- Located 35km north of Central Tanami treatment plant
- Two open pits – Sandpiper and Kookaburra
- Mining undertaken in a staged approach
- Excellent grade and tonnage reconciliations being achieved
- Significant exploration success highlighting underground resources
- Potential long-term production centre

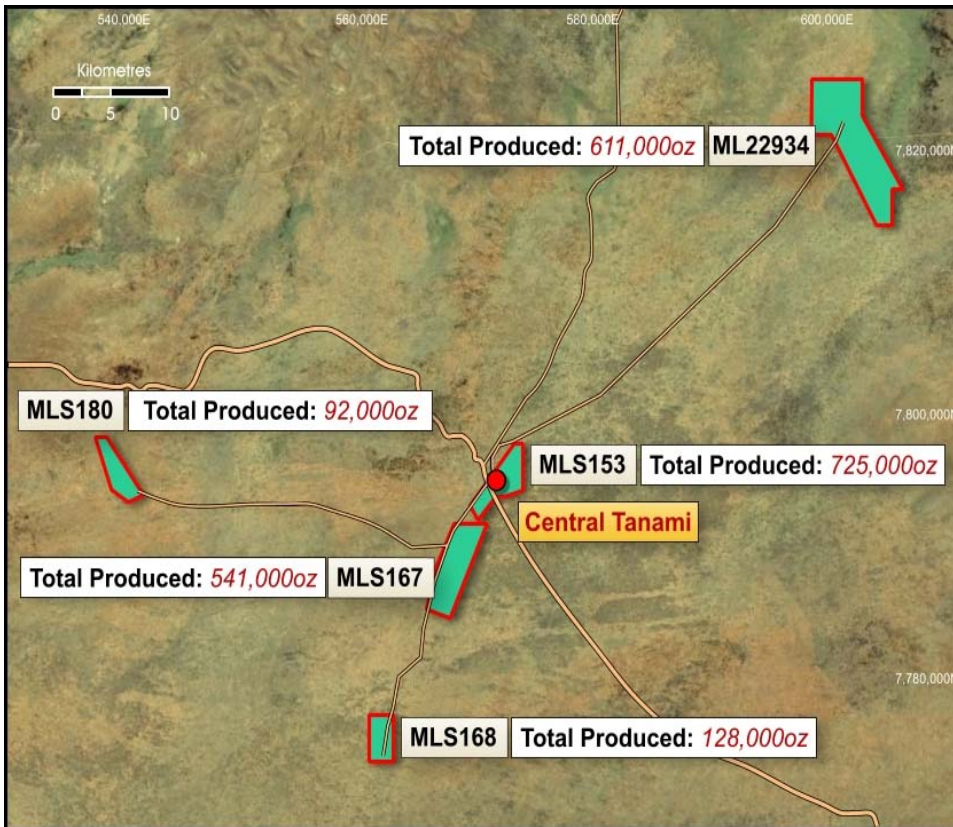


- A high-grade open pit mine with outstanding growth potential
- Current Indicated and Inferred Resource:
792,000t @ 3.4g/t Au for 88,000ozs
- Recent drilling strengthens resource potential below open pit:
15.1m @ 6.1g/t Au incl 8.8m @ 9.6g/t
5.0m @ 7.3g/t Au [latest result]
Open down plunge.....



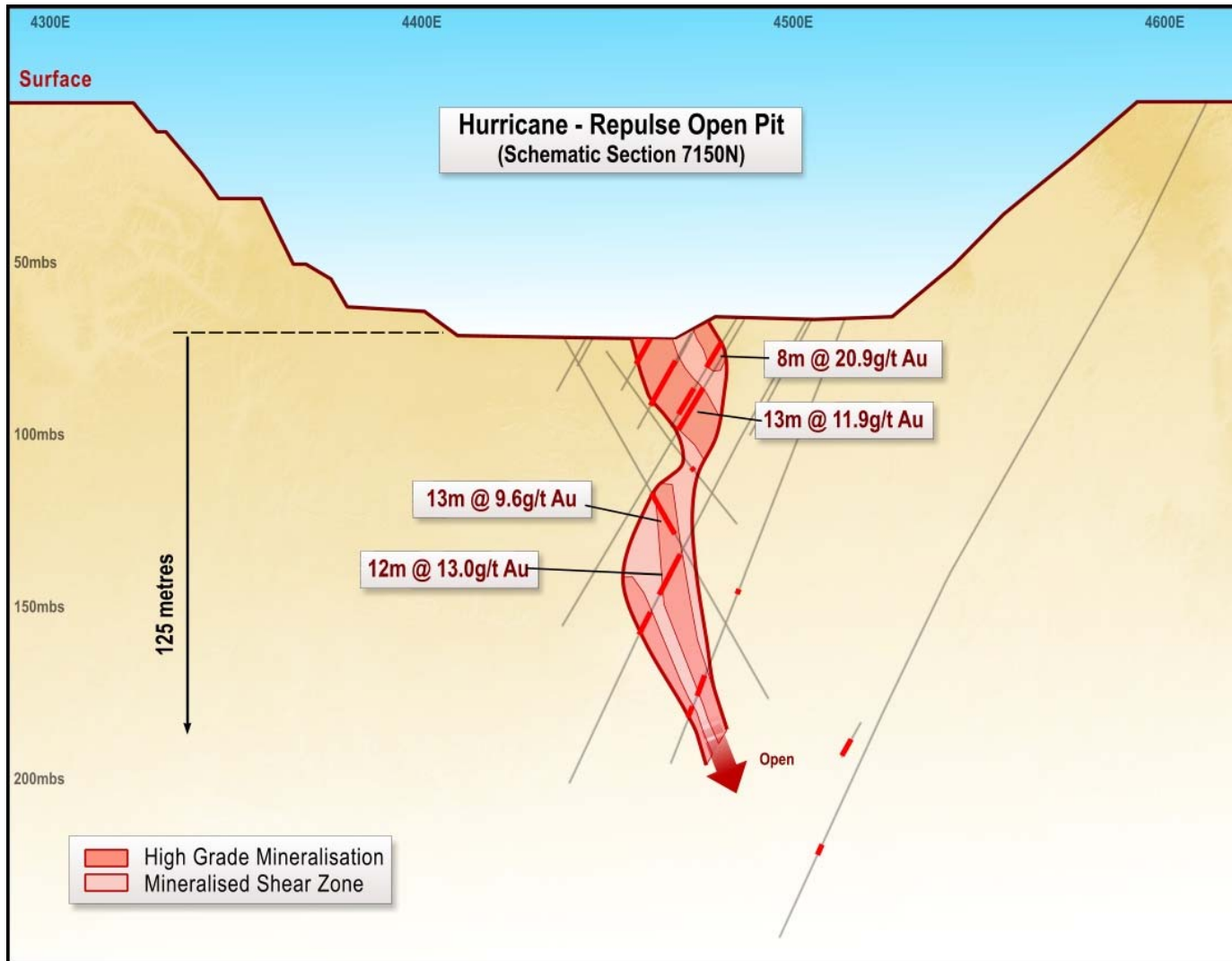
- Acquired from Newmont for \$22M
- Part of broader \$32.8M acquisition with ABM Resources
- Acquisition includes:
 - *516,000oz JORC Resource (2001)*
 - *1.2Mtpa treatment plant and extensive infrastructure*
 - *~ 2,000 km² exploration package*
 - *~ 2.1Moz historic production endowment*
- Aiming to recommence gold production within 24 months



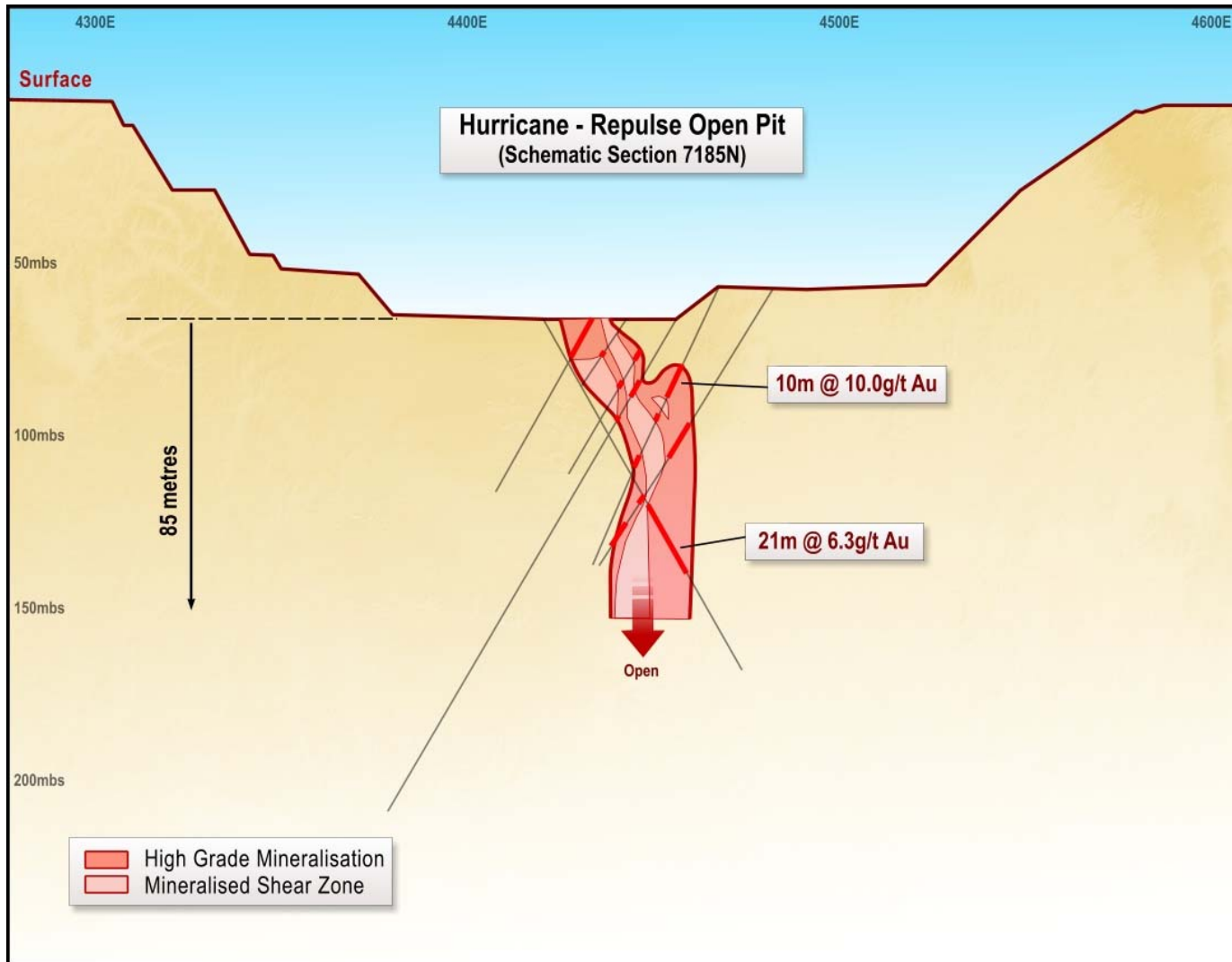


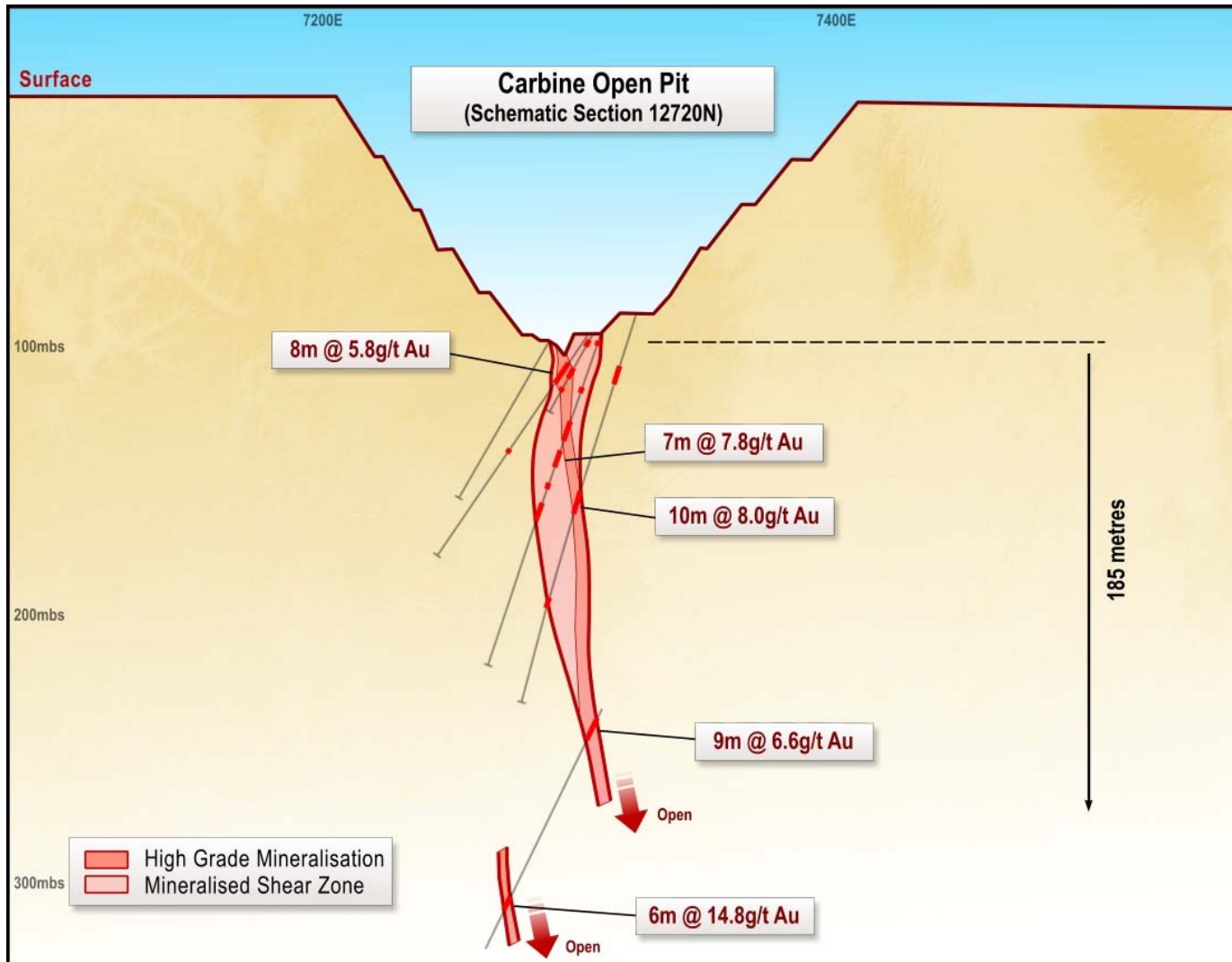
- 2.1Moz historic production endowment
- Located 130km west of world-class Callie-Granites production centre
- 21 Mineral Leases (125km²)
- 16 Exploration Licences (~2,000km²)
- 43 open pits (40 to 120m in depth)
- Substantial production from Groundrush (600,000ozs) and Hurricane-Repulse (250,000ozs)

Hurricane-Repulse

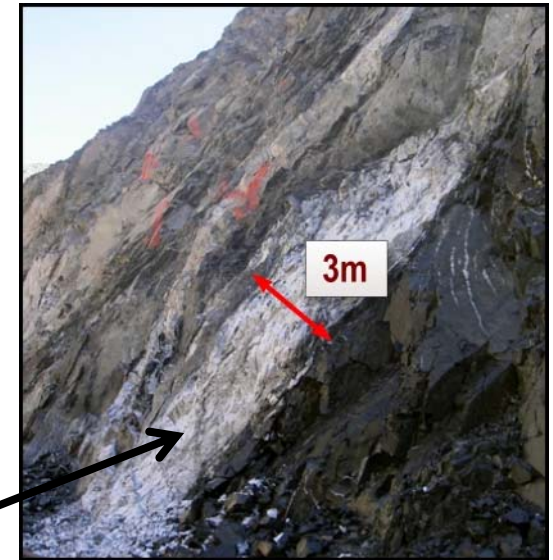
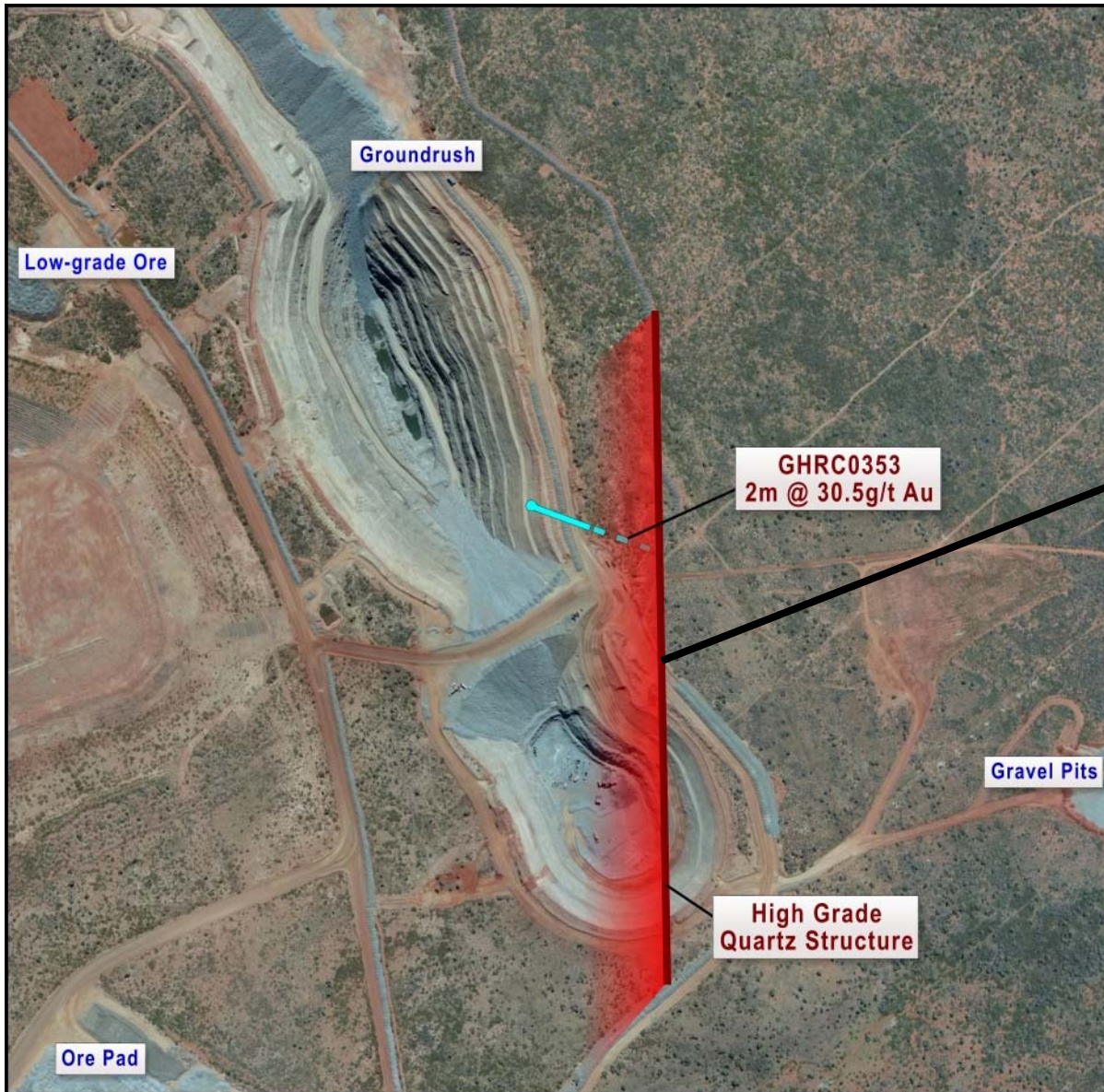


Hurricane-Repulse





Groundrush Open Pit



Central Tanami Project – Resources

- 516,000oz JORC resources last estimated in 2001
- Resources being re-optimised at current gold price – due mid-2010

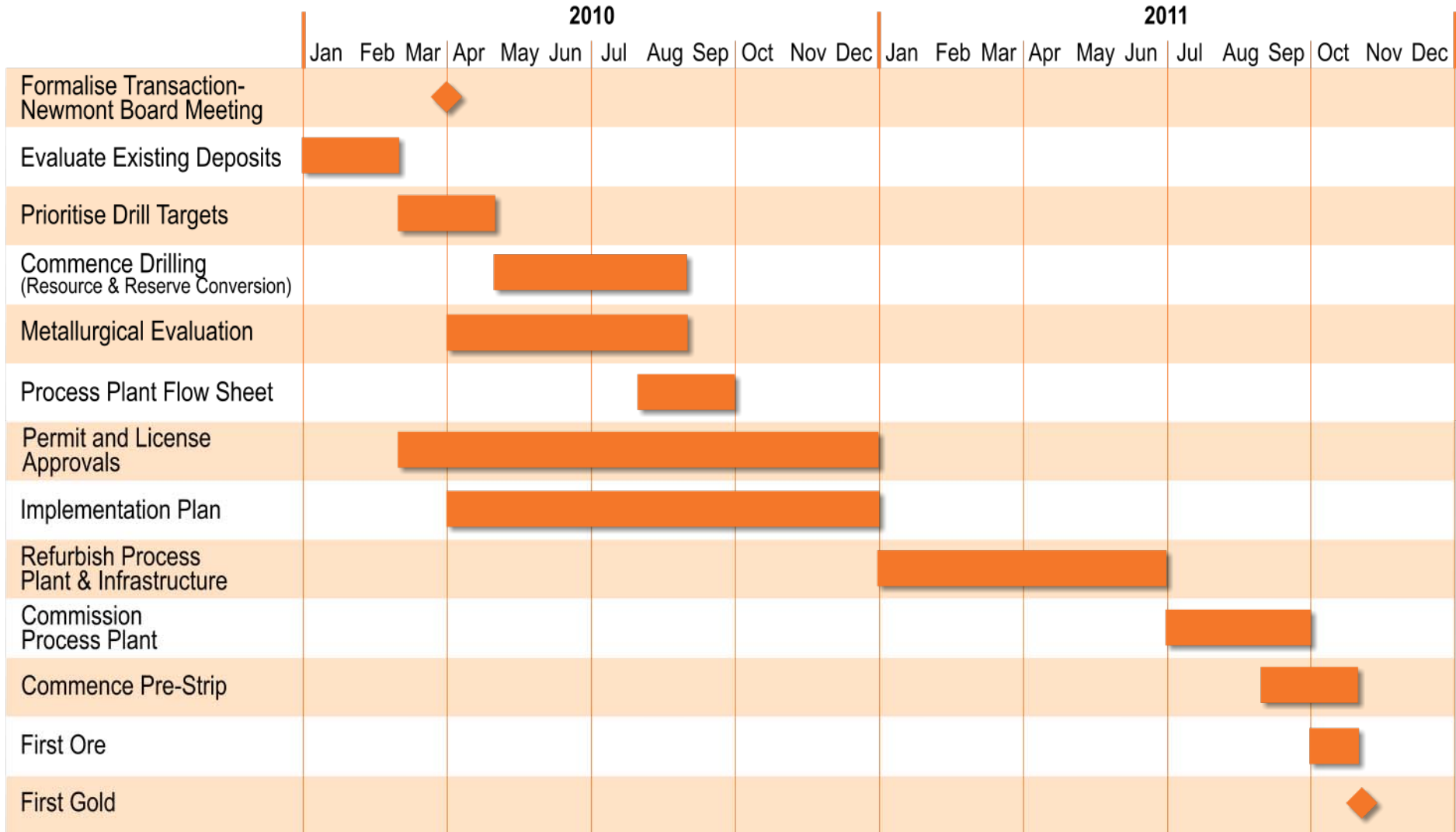
Deposit	Measured		Indicated		Inferred		Total		Ounces
	Tonnes	Grade (g/t)	Tonnes	Grade (g/t)	Tonnes	Grade (g/t)	Tonnes	Grade (g/t)	
Dogbolter Area	366,000	3.8	151,000	3.5	6,000	2.4	523,000	3.7	62,000
Redback Area	615,000	3.4	578,000	5.4	110,000	5.8	1,303,000	4.5	188,000
Jims Area								2.5	23,000
MLS119-133	198,000	2.2	212,000	2.4	13,000	2.4	423,000	2.3	31,000
MLS153	75,000	2.2	151,000	2.7	35,000	2.9	261,000	2.6	22,000
Molech	312,000	3.8	190,000	3.6	32,000	3.1	534,000	3.7	63,000
Crusade			1,020,000	2.7			1,020,000	2.7	89,000
LG Stockpiles	1,515,000	0.8					1,515,000	0.8	38,000
Total	3,323,000	2.2	2,319,000	3.5	219,000	4.3	5,861,000	2.7	516,000

Resource Upgrade Due Out Shortly



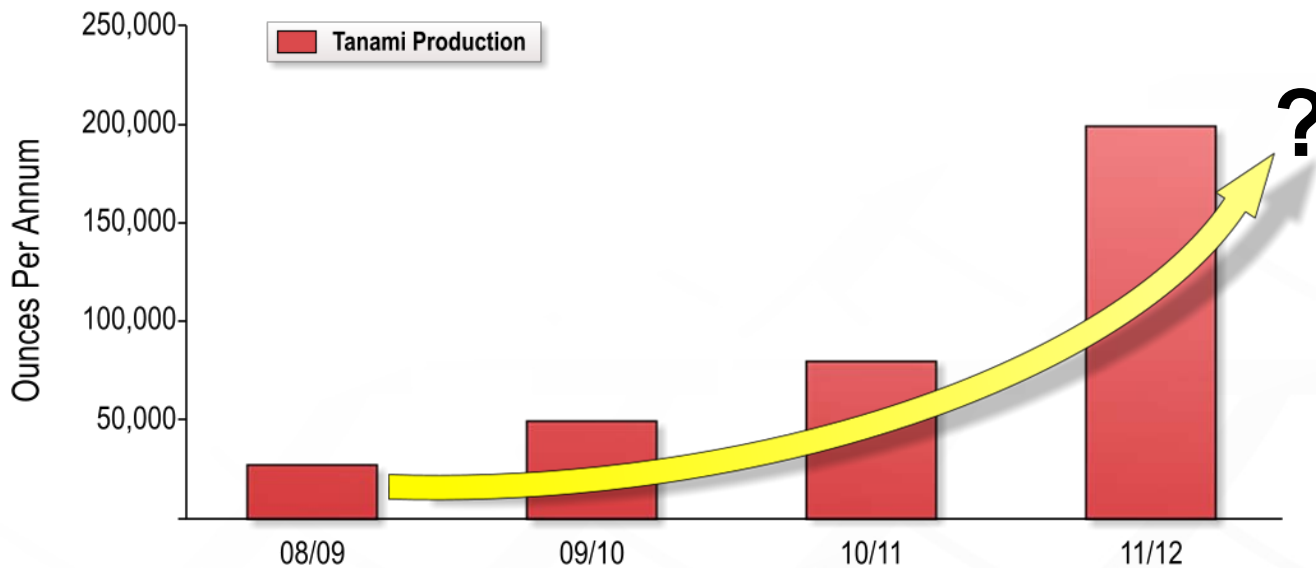
Central Tanami

Proposed Development Schedule



Summary ... *realising our potential*

- Aiming to become a leading mid-tier gold producer and dominant player in Australia by:
 - *Maintaining experienced and dedicated management team [runs on the board]*
 - *Growing gold production from Tanami Operations - 50,000 to 200,000oz pa*
 - *Basis of production increase - revised JORC Resource, strong focus on exploration*
 - *Combined treatment rate of + 2.0 Mtpa*





Tanami Gold NL

“Tanami Gold’s tenements in the Tanami-Arunta Province in Western Australia and the Northern Territory, have the potential to host world class gold deposits comparable to Newmont’s Callie-DBS deposits.”

T. Campbell McCuaig (FSEG, MAusIMM, MAIG, MGSA, MSGA)

Director and Professorial Fellow Centre for Exploration Targeting (M006)

School of Earth and Environment The University of Western Australia,



TANAMI
GOLD NL

ASX:TAM



Production, Performance, Potential...

Building a 200,000oz per annum Australian gold producer

April 2010

Sandpiper Diamond Drilling Hole Locations and Significant Intersections

Hole Number	Collar Easting	Collar Northing	Collar RL	Collar Dip	Collar Azimuth	Hole Depth	Depth From	Depth To	Width	Grade g/t
SPDD1	485902	7834137	374	-60	180	207	112.5	115.3	2.8	2.4
							119.9	121.9	2.0	2.2
SPDD2	485874	7834155	374	-64	180	250	202	217.1	15.1	6.2
							220.9	222.7	1.8	2.3
SPDD3	485686	7834189	375	-63	180	301	No significant intersections			
SPDD4	485686	7834164	375	-58	180	274	No significant intersections			
SPDD5	485804	7834227	376	-61	180	289	258.5	263.5	5.1	4.0
SPDD6	485802	7834213	375	-56	180	300	230.0	234.0	4.1	2.1
SPDD7	485804	7834250	376	-64	180	376	317.0	319.2	2.2	5.0
							326.0	328.5	2.5	3.8
SPDD8	485874	7834139	374	-65	180	232	146.8	149.9	3.1	1.6
SPDD9	485874	7834158	375	-75	180	310	235.2	239.8	4.6	1.6
							275.2	281.0	5.8	4.7
SPDD10	485903	7834144	374	-77	163	311	292.4	294.9	2.5	3.6
							297.1	298.4	1.3	11.8
SPDD11	485875	7834156	375	-70	180	281	176.5	182.6	6.1	8.7
							206.9	208.7	1.8	4.9
							251.0	254.2	3.2	6.9
SPDD12	485920	7834259	376	-60	180	385	345.2	350.2	5.0	7.3
SPDD13	485920	7834297	376	-68	177	532	Assay results pending			
SPDD14	485970	7834211	376	-60	177	361	Assay results pending			

Notes –

Collar Northing, Easting and Azimuth are all in AMG Grid coordinates.

Some collar coordinates are as planned and may vary upon survey pickup.

Analyses by 50g fire assay with AAS finish. No cutting of grades has been applied.

Significant Intersections calculated at 1g/t lower cut off grade with maximum two metres internal dilution. Assays rounded to nearest 0.1g/t