



COMPANY ENQUIRIES  
Denis Waddell  
DEPUTY CHAIRMAN  
Jane Bown  
EXECUTIVE ASSISTANT

TANAMI GOLD NL  
ABN 51 000 617 176  
T: +61 8 9212 5999  
F: +61 8 9212 5900

L4, 50 Colin Street, West Perth  
Western Australia 6005  
PO Box 1892, West Perth  
Western Australia 6872

## GROUNDROUSH DRILLING DELIVERS 39% MINERAL RESOURCE GROWTH

### TOTAL COMPANY MINERAL RESOURCE INCREASES TO 2.8 MILLION OUNCES

#### KEY POINTS

- Groundrush Mineral Resource increases to 743,000 ounces gold - up 39%.
- A 208,000 ounce increase from the 535,000 ounce Resource announced on 25 October 2011.
- Measured and Indicated Resources increased to 278,000 ounces - up 37% from 202,000 ounces.
- Exploration and infill drilling is ongoing with several recent successful step-out drill holes not included in the upgraded Groundrush Resource.
- Intensive drill programs are continuing at Groundrush and on regional targets.

Australian gold producer Tanami Gold NL (ASX: TAM – ‘Tanami’ or ‘the Company’) is pleased to announce a 39% increase in the Mineral Resource estimate for its flagship Groundrush deposit, which is part of the Company’s 100% owned Central Tanami Project in the Northern Territory.

Tanami’s Deputy Chairman, Denis Waddell said, “This is a very pleasing result, and clearly validates our strong view that Groundrush is a large mineralised system which will continue to deliver increases in gold Resources as our drill programs continue to test down plunge and down dip extensions. This interim Resource upgrade further demonstrates the potential to rapidly increase the Groundrush Resource. Although drilling will continue indefinitely, the current phase of intensive infill and extensional drilling will be undertaken by December 2012, which should enable completion of a robust Stage 1 Central Tanami Project Feasibility Study by April 2013. Importantly, recent significant step-out drilling intersections (with visible gold present) deeper in the Groundrush mineralised system are yet to be included in the Groundrush Resource. The mineralised system remains open along strike, down plunge and down dip.”

Mr Waddell added, “A significant proportion of the recent drilling was aimed at increasing the geological confidence level and upgrading Inferred Resources to the Indicated category. We have been successful in this regard which is an important step in delineating mining Reserves and designing the mine plan necessary for completion of the Feasibility Study. We will continue to strike a balance between growing the Resource base through step-out drilling and Resource/Reserve upgrade drilling. We are very confident the Groundrush deposit will underpin the successful development of a multi-deposit Central Tanami Project.”

# ASX Announcement

## Mineral Resource Update - Groundrush

A new Mineral Resource estimate of 5.1Mt @ 4.5g/t Au for 742,900 ounces of gold (see Table 1 and Figure 2) has been completed for the Groundrush deposit at the Central Tanami Project. The Resource upgrade has resulted in a 39% increase in contained ounces and has increased the confidence in the mineralisation outlined in the estimate released on 25 October 2011 (see Table 2 and Figure 1).

Recent drilling continues to return intersections that suggest the tenor of the mineralised system remains strong at depth and down plunge to the south of the current Mineral Resource. This drilling has not been included in this Resource update as results are still pending. A number of the intersections in the step-out holes (GRDD86 and GRDD86A) contain visible gold and significant zones of alteration suggesting that there is potential for the mineralisation to extend well beyond the current Mineral Resource (see Figure 2). Once results are received they will be incorporated in the next resource update.

The Groundrush deposit is hosted within a fractionated dolerite unit and is located approximately 40 kilometres north-east of the Central Tanami Project treatment plant. The deposit consists of multiple south plunging zones of mineralisation, two footwall zones of mineralisation and a set of shallow dipping high grade zones of mineralisation.

Step-out drilling has recently been successful in defining significant alteration and visible gold in the Groundrush Southern Deeps Target (Refer to previous announcement 18/05/2012). The Southern Deeps target is based on the concept that the +1 million ounce Groundrush Deposit (610,000 ounces historically produced from the open pit and another 743,000 ounces in Resources, see table 2) is one dilation zone within this plunging corridor and the Southern Deeps exploration target is the first of possibly multiple repeats of this dilation zone and as such, is considered by the Company to be a significant exploration target.

The target dimensions of the Southern Deeps zone of mineralisation which are based on the main Groundrush Deposit, are interpreted by the Company's geologists to extend to between 600-700 metres down plunge, between 150-200 metres down dip and between 15-20 metres wide with an expected grade range of 4-6 g/t Au and a tonnage range of 3,800,000 – 8,000,000 tonnes<sup>1</sup>.

**Denis Waddell**  
**Deputy Chairman**

---

<sup>1</sup> *The potential quantity and grade of the Exploration targets outlined are conceptual in nature, there has been insufficient exploration to define a Mineral Resource and it is uncertain if further exploration will result in the determination of a Mineral Resource.*

**Table 1 – Groundrush Deposit – Mineral Resource as at 5 June 2012**

Classification	Tonnes	Grade (g/t Au)	Ounces
<b>Measured</b>	472,000	4.3	66,000
<b>Indicated</b>	1,515,000	4.36	212,000
<b>Inferred</b>	3,149,000	4.6	465,000
<b>Total</b>	<b>5,136,000</b>	<b>4.5</b>	<b>743,000</b>

**Notes to accompany Table 1**

1. Tonnes and ounces of gold are rounded to the nearest thousand and grade is rounded to the nearest 0.1g/t Au. Rounding may affect tallies.
2. Resources reported above 1.0g/t Au block model grade.

**Table 2 – Groundrush Deposit – Mineral Resource as at 30 September 2011**

Classification	Tonnes	Grade (g/t Au)	Ounces
<b>Measured</b>	500,000	4.1	66,000
<b>Indicated</b>	995,000	4.3	136,000
<b>Inferred</b>	2,101,000	4.9	333,000
<b>Total</b>	<b>3,596,000</b>	<b>4.6</b>	<b>535,000</b>

**Notes to accompany Table 2**

1. Tonnes and ounces of gold are rounded to the nearest thousand and grade is rounded to the nearest 0.1g/t Au. Rounding may affect tallies.
2. Resources reported above 1.0g/t Au block model grade.

*The information in this report that relates to Mineral Resource Estimation, Geological Data and Exploration Results is based on information compiled by Mr Michael Thomson, a full time employee and Principal Geologist of Tanami Gold NL. Mr Thomson is a member of the Australasian Institute of Mining and Metallurgy and has sufficient experience which is relevant to the style of mineralisation and type of deposit under consideration to qualify as a Competent Person as defined in the December 2004 edition of the Australasian Code for Reporting of Exploration Results, Mineral Resources and Ore Reserves (JORC Code). Mr Thomson consents to the inclusion in this report of the matters based on his information in the form and context in which they appear.*

*This announcement contains certain statements which constitute "forward looking statements". Such statements are only predictions and are subject to inherent risks and uncertainties which could cause actual values, results, performance achievements to differ materially from those expressed, implied or projected in any forward-looking statement. No representation or warranty, expressed or implied, is made by Tanami Gold NL that material contained in this announcement will be achieved or proved correct.*

# ASX Announcement

Figure 1 – Groundrush Deposit – 3D Mineral Resource Block Model as at 30 September 2011

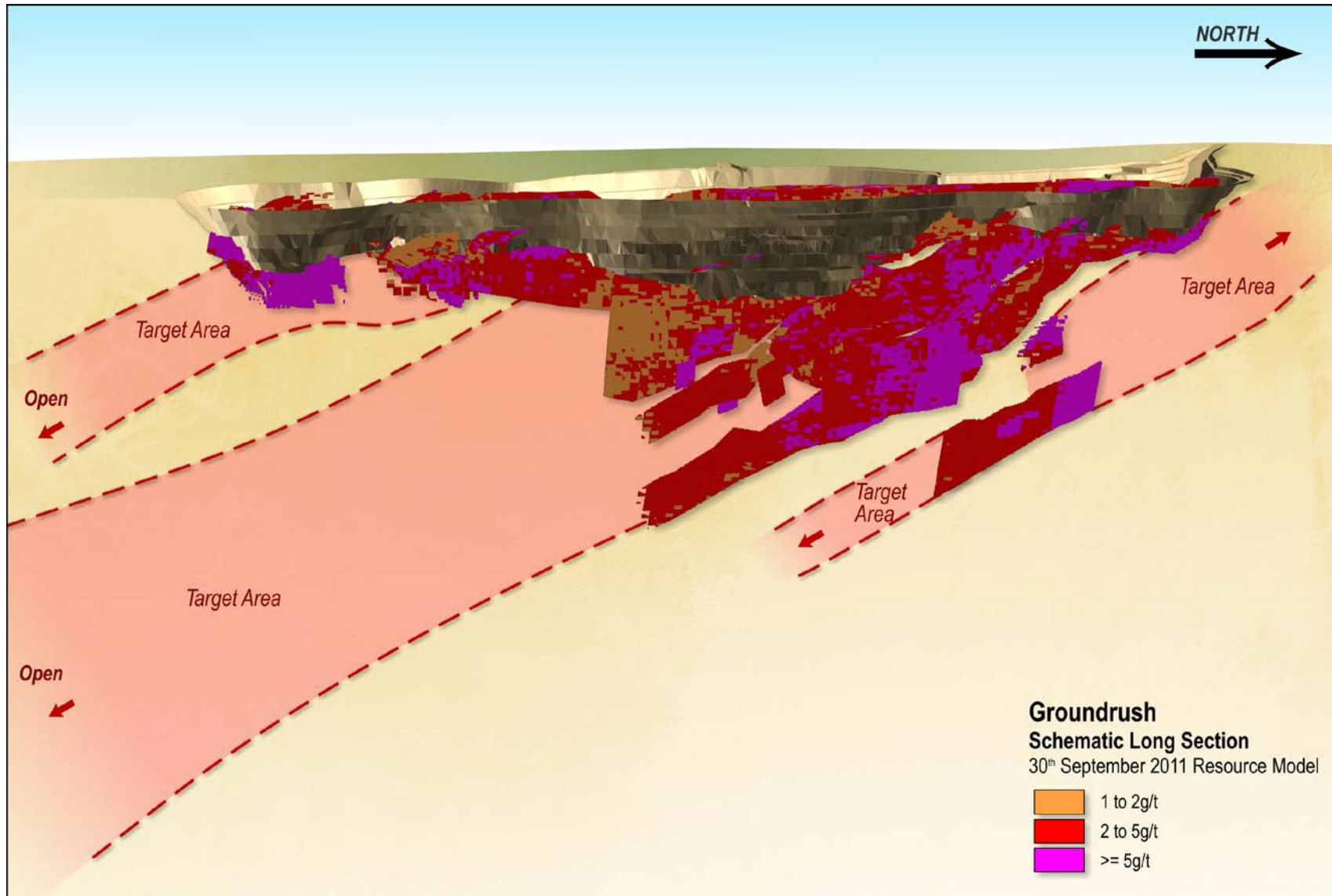
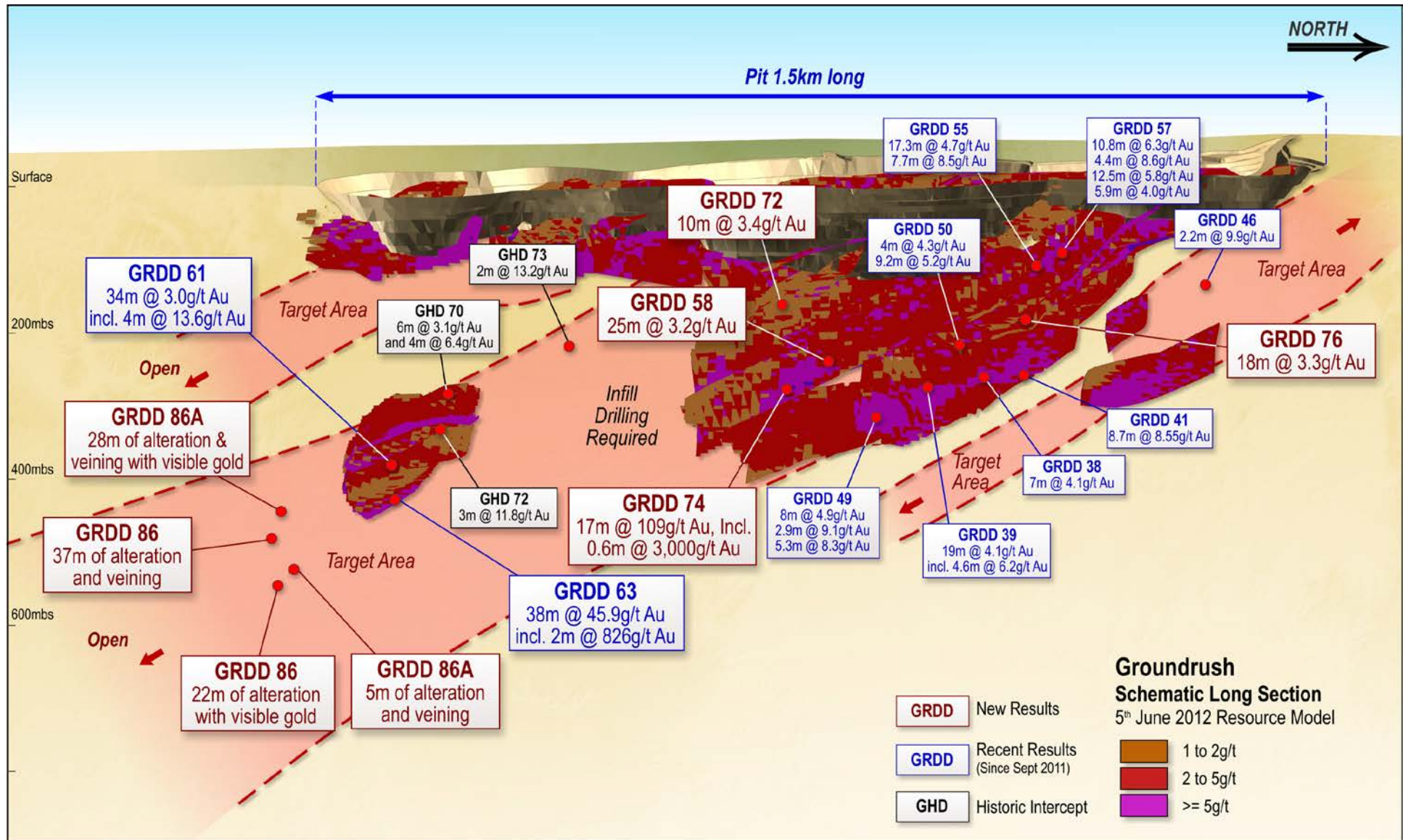




Figure 2 - Groundrush Schematic Long Section as at 5 June 2012



**Table 3: Tanami Gold NL Mineral Resources as at 30 September 2011**

Project	Resource Category											
	Measured			Indicated			Inferred			Total		
	Tonnes	Grade	Ounces	Tonnes	Grade	Ounces	Tonnes	Grade	Ounces	Tonnes	Grade	Ounces
<b>WT</b>	497,000	5.5	88,000	1,214,000	6.5	255,000	1,393,000	4.3	194,000	3,012,000	5.4	538,000
<b>CT</b>	6,755,000	3.0	645,000	8,016,000	2.7	699,000	6,505,000	3.3	686,000	21,277,000	3.0	2,031,000
<b>Sub Total</b>	<b>7,252,000</b>	<b>8.5</b>	<b>733,000</b>	<b>9,230,000</b>	<b>9.3</b>	<b>954,000</b>	<b>7,898,000</b>	<b>7.6</b>	<b>880,000</b>	<b>24,289,000</b>	<b>8.4</b>	<b>2,569,000</b>
<b>CT Stockpile</b>	1,700,000	0.9	48,000							1,700,000	0.9	48,000
<b>Total</b>	<b>8,952,000</b>	<b>2.7</b>	<b>781,000</b>	<b>9,230,000</b>	<b>3.2</b>	<b>954,000</b>	<b>7,898,000</b>	<b>3.5</b>	<b>880,000</b>	<b>25,989,000</b>	<b>3.1</b>	<b>2,617,000</b>

**Notes to accompany Table 3**

1. WT is Western Tanami and CT is Central Tanami.
2. Resource estimations completed using MineMap, Vulcan and Micromine software packages comprising a combination of ellipsoidal inverse distance and ordinary kriging grade interpolation methods.
3. Grade estimation was constrained to material within >0.7g/t mineralisation outlines.
4. Variable gold assay top cuts were applied based on geostatistical parameters and historical production reconciliation.
5. Resources reported above 0.7g/t block model grade.
6. Stockpile figures from previously reported Otter Gold Mines NL 2001 Mineral Resource estimate less recorded treatment by Newmont Asia Pacific.
7. Tonnes and ounces rounded to the nearest thousand and grade rounded to 0.1g/t. Rounding may affect tallies.
8. The information in this report pertaining to Mineral Resources for the Central Tanami Project was compiled by Mr Bill Makar (MAusIMM), Consultant Geologist – Tanami Gold NL, Mr Michael Thomson (MAusIMM), Principal Geologist for Tanami Gold NL, Mr Steven Nicholls (MAIG), former Senior Geologist for Tanami Gold NL, Mrs Claire Hillyard (MAusIMM), Resource Geologist for Tanami Gold NL and Mr Peter Ball (MAusIMM), Director of Datageo Geological Consultants. Mr Makar, Mr Thomson, Mr Nicholls, Mrs Hillyard and Mr Ball have sufficient experience which is relevant to the style of mineralisation and type of deposit under consideration to qualify as Competent Persons as defined in the December 2004 edition of the Australasian Code for Reporting of Exploration Results, Mineral Resources and Ore Reserves (JORC Code). Mr Makar, Mr Nicholls, Mrs Hillyard and Mr Ball consent to the inclusion in this report of the matters based on their information in the form and context in which it appears.
9. The Western Tanami Resource figure stated has not been depleted for combined Coyote mine production of 59,501 ounces during the period 1 July 2010 - 31 March 2012.

**Table 4: Tanami Gold NL Mineral Resources as at 5 June 2012**

Project	Resource Category											
	Measured			Indicated			Inferred			Total		
	Tonnes	Grade	Ounces	Tonnes	Grade	Ounces	Tonnes	Grade	Ounces	Tonnes	Grade	Ounces
<b>WT</b>	497,000	5.5	88,000	1,214,000	6.5	255,000	1,393,000	4.3	194,000	3,104,000	5.4	538,000
<b>CT</b>	6,727,000	3.0	644,000	8,536,000	2.8	775,300	7,553,000	3.4	818,200	22,816,000	3.1	2,237,900
<b>Sub Total</b>	<b>7,224,000</b>	<b>3.2</b>	<b>732,400</b>	<b>9,750,000</b>	<b>3.3</b>	<b>1,030,300</b>	<b>8,946,000</b>	<b>3.5</b>	<b>1,012,200</b>	<b>25,920,000</b>	<b>3.3</b>	<b>2,775,900</b>
<b>CT Stockpile</b>	1,700,000	0.9	48,000							1,700,000	0.9	48,000
<b>Total</b>	<b>8,924,000</b>	<b>2.7</b>	<b>780,400</b>	<b>9,750,000</b>	<b>3.3</b>	<b>1,030,300</b>	<b>8,946,000</b>	<b>3.5</b>	<b>1,012,200</b>	<b>27,620,000</b>	<b>3.2</b>	<b>2,823,900</b>

**Notes to accompany Table 4**

1. WT is Western Tanami and CT is Central Tanami.
2. Resource estimations completed using MineMap, Vulcan and Micromine software packages comprising a combination of ellipsoidal inverse distance and ordinary kriging grade interpolation methods.
3. Grade estimation was constrained to material within >0.7g/t mineralisation outlines.
4. Variable gold assay top cuts were applied based on geostatistical parameters and historical production reconciliation.
5. Resources reported above 0.7g/t block model grade.
6. Stockpile figures from previously reported Otter Gold Mines NL 2001 Mineral Resource estimate less recorded treatment by Newmont Asia Pacific.
7. Tonnes and ounces rounded to the nearest thousand and grade rounded to 0.1g/t. Rounding may affect tallies.
8. The information in this report pertaining to Mineral Resources for the Central Tanami Project was compiled by Mr Bill Makar (MAusIMM), Consultant Geologist – Tanami Gold NL, Mr Michael Thomson (MAusIMM), Principal Geologist for Tanami Gold NL, Mr Steven Nicholls (MAIG), former Senior Geologist for Tanami Gold NL, Mrs Claire Hillyard (MAusIMM), Resource Geologist for Tanami Gold NL and Mr Peter Ball (MAusIMM), Director of Datageo Geological Consultants. Mr Makar, Mr Thomson, Mr Nicholls, Mrs Hillyard and Mr Ball have sufficient experience which is relevant to the style of mineralisation and type of deposit under consideration to qualify as Competent Persons as defined in the December 2004 edition of the Australasian Code for Reporting of Exploration Results, Mineral Resources and Ore Reserves (JORC Code). Mr Makar, Mr Nicholls, Mrs Hillyard and Mr Ball consent to the inclusion in this report of the matters based on their information in the form and context in which it appears.
9. The Western Tanami Resource figure stated has not been depleted for combined Coyote mine production of 59,501 ounces during the period 1 July 2010 - 31 March 2012.