



THUNDELARRA
EXPLORATION

THE UNTOLD URANIUM STORY

February 2007



Disclaimer

This presentation is provided to you, as a professional investor as defined in Chapter 6D.2 of the Corporations Act, for the sole purpose of providing information to enable recipients to decide whether they wish to proceed with further investigation and it is not intended to form the basis of any investment decision or any decision to purchase any securities in Thundelarra Exploration Ltd ("**Thundelarra**"). It is incomplete without reference to, and should be viewed solely in conjunction with, the oral briefing provided by Thundelarra.

The material provided to you does not constitute an invitation, solicitation, recommendation or an offer to purchase or subscribe for securities.

It is provided to you on the basis that you and those executives of your organisation who sight it agree to keep its contents confidential. It should not be published or disclosed to any other party without Thundelarra's prior written consent and should be circulated only within your organisation to those executives directly involved in evaluating an investment in Thundelarra.

Thundelarra makes no representation or warranty, express or implied as to the accuracy or completeness of any of the information in this document or in any other written or oral communication to a prospective investor and expressly disclaims any and all liability relating to or resulting from the use of such information. In particular, no representation or warranty is given as to the achievement or reasonableness of any forward-looking statements, projections or forecasts as there can be no assurance that actual results will not differ from Thundelarra's expectations.

Management

	Philip Crabb	Chairman
	Frank DeMarte	Executive Director
	Brian Richardson	Executive Director
	Rick Crabb	Non Executive Director
	Mal Randall	Non Executive Director

Share Capital Structure

 Issued Capital	103M
 Fully Diluted	138M
 Market Capitalisation (Undiluted)	~ \$45M @ \$0.44/share

Market Capitalisation calculated on THX share price 2 February 2007

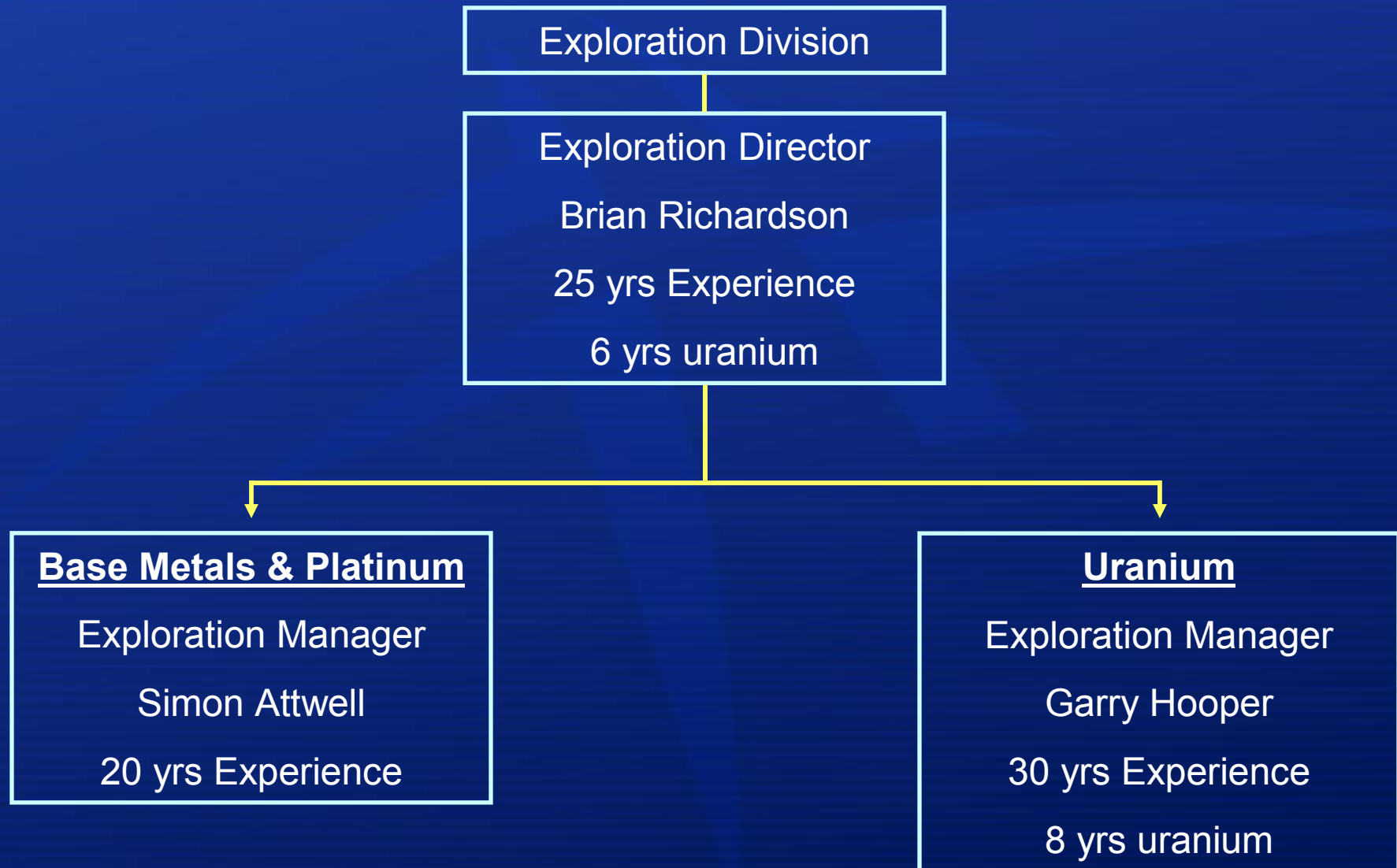
Largest Share Holders: (January 2007)

 Ragged Range Mining Pty Ltd & Associates	17%
 LionOre Australia Pty Ltd	8%
 Fortis Clearing Nominees Pty Ltd	6%
 Citicorp Nominees Pty Limited	5%
 Sally Malay Mining Pty Ltd	2%

Company Highlights

- ✦ Experienced Board & Technical Team
- ✦ Strong cash flow expected from Copernicus Nickel Mine in 2007
- ✦ 15 Quality Australian Uranium Projects (approx. 8,600 sq kms)
- ✦ Exciting new Platinum discovery - Lamboo Project
- ✦ Emerging Cu-Zn Project – Sophie Downs
- ✦ Untested new DHEM anomalies – Keller Creek Nickel Prospect
- ✦ Active global project generation program
- ✦ Field exploration has commenced for 2007

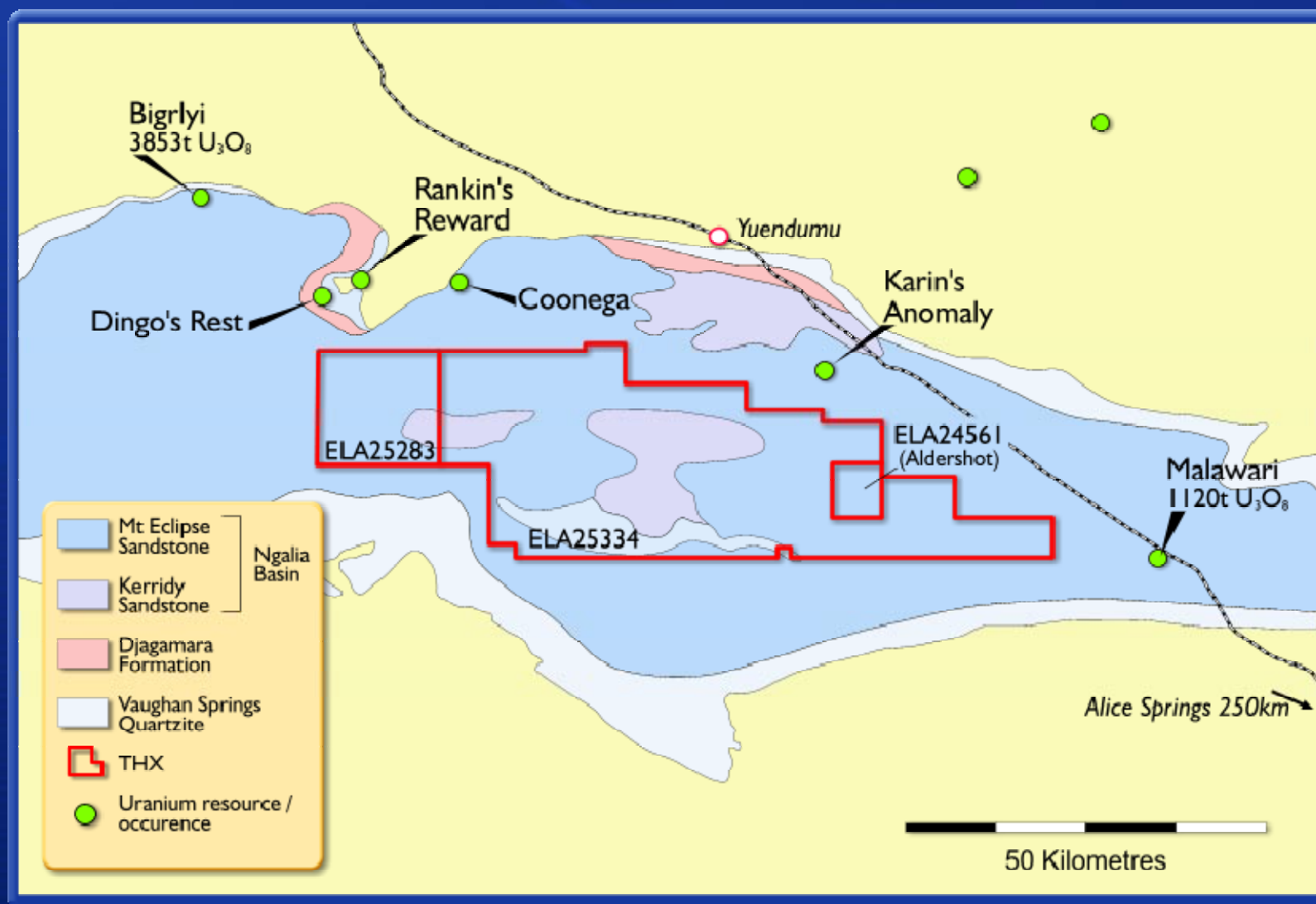
EXPLORATION TEAM



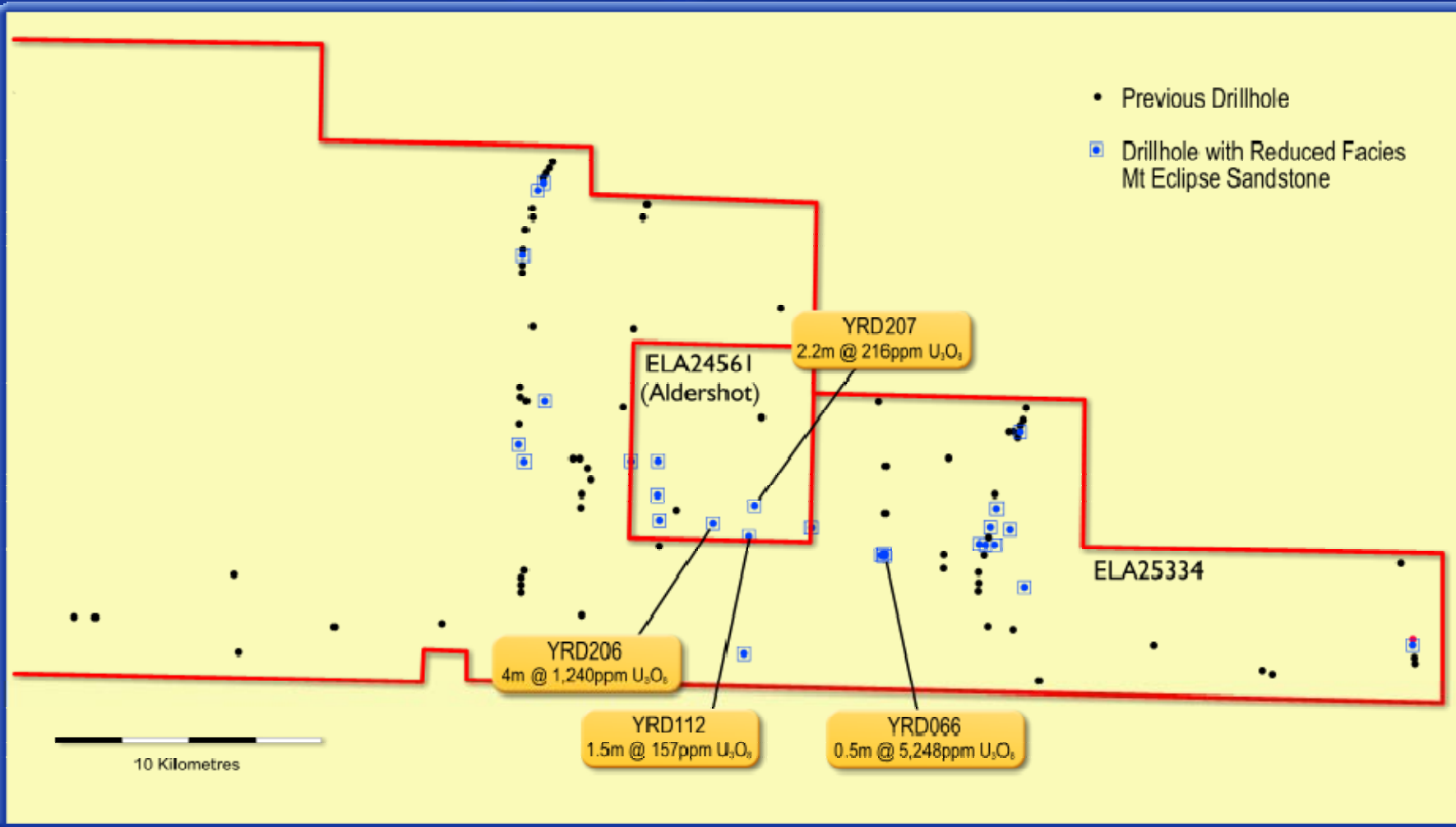
Uranium Project Areas



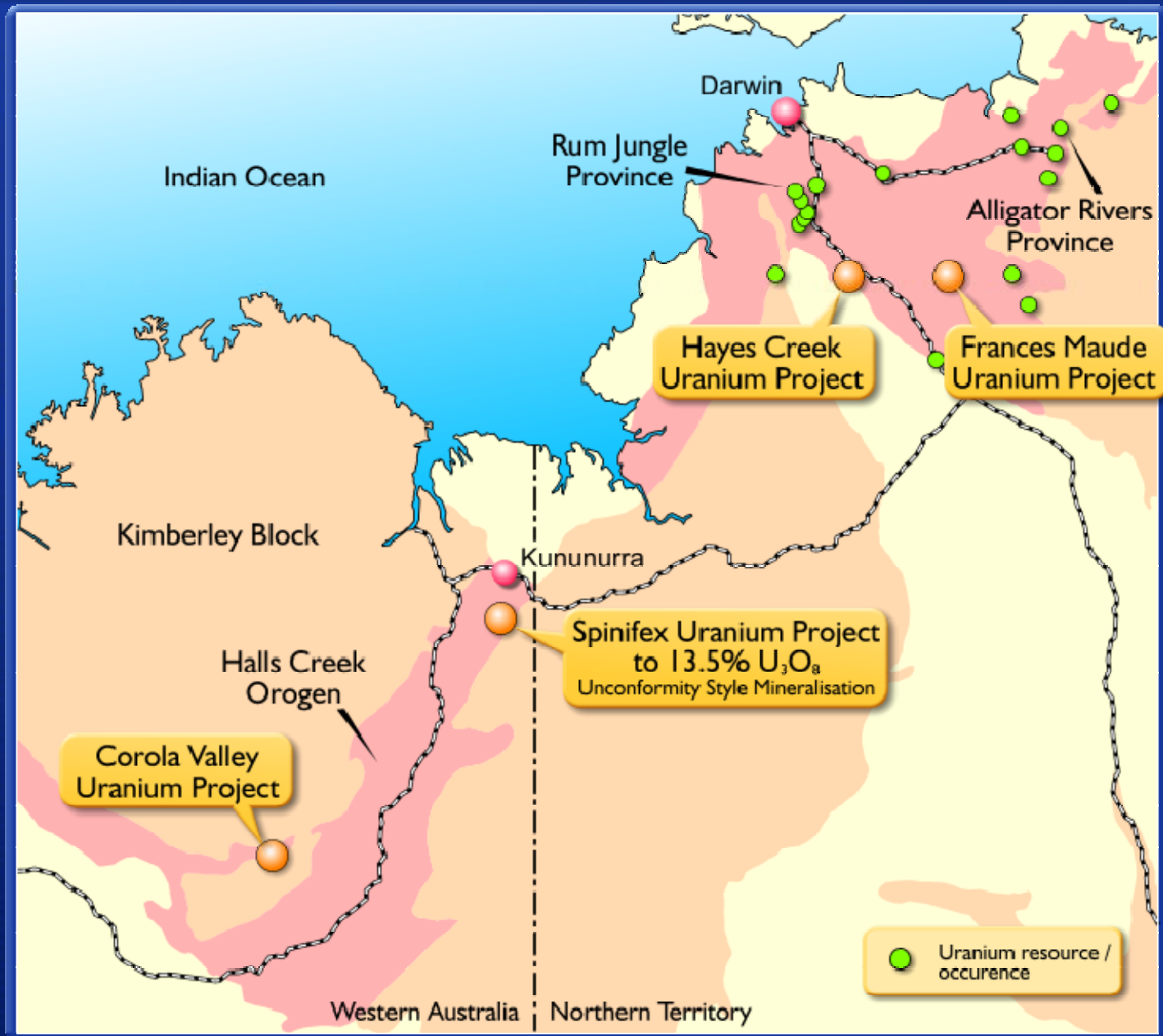
Ngalia Basin



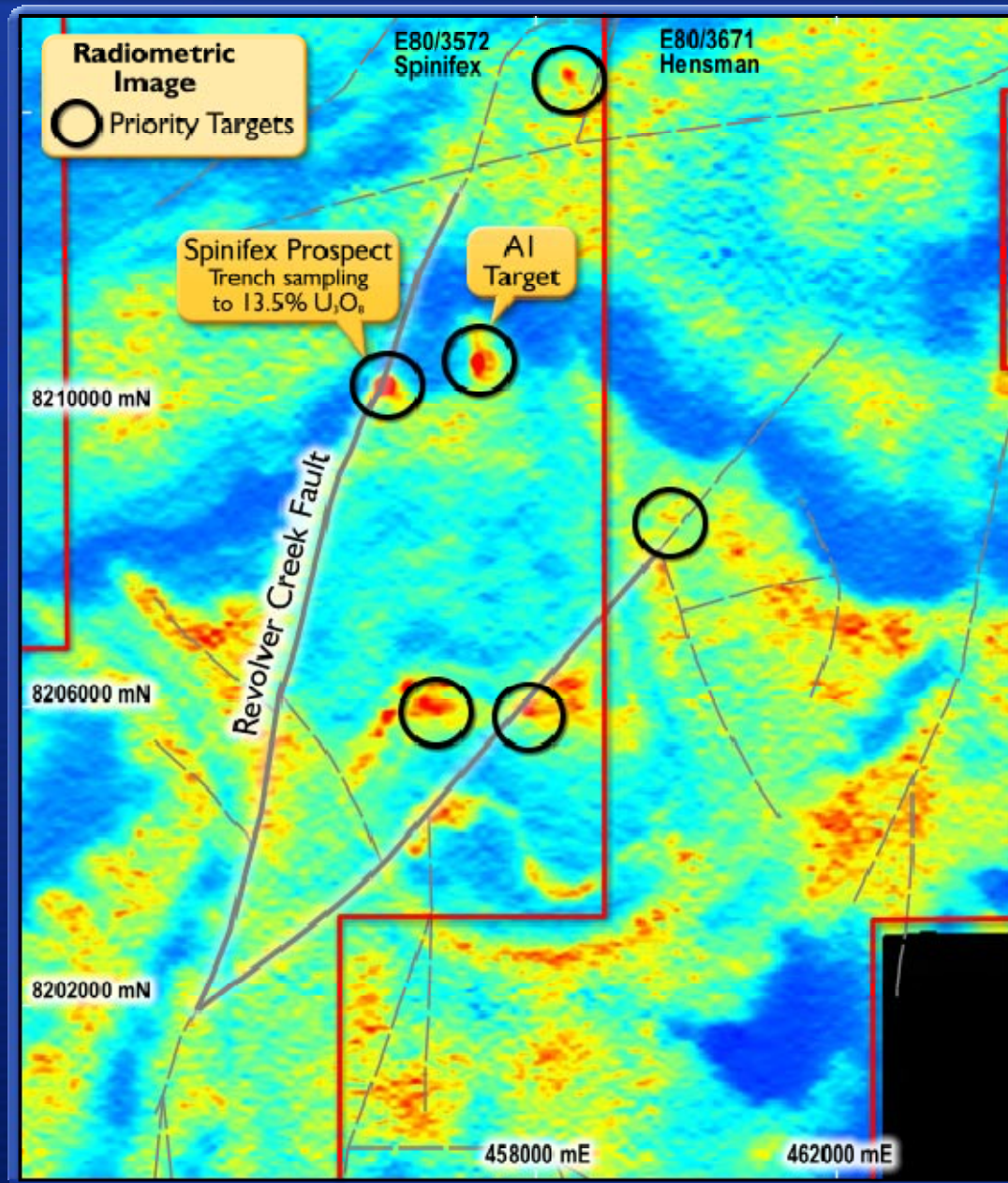
Ngalia Basin - Historical Drilling Location Map



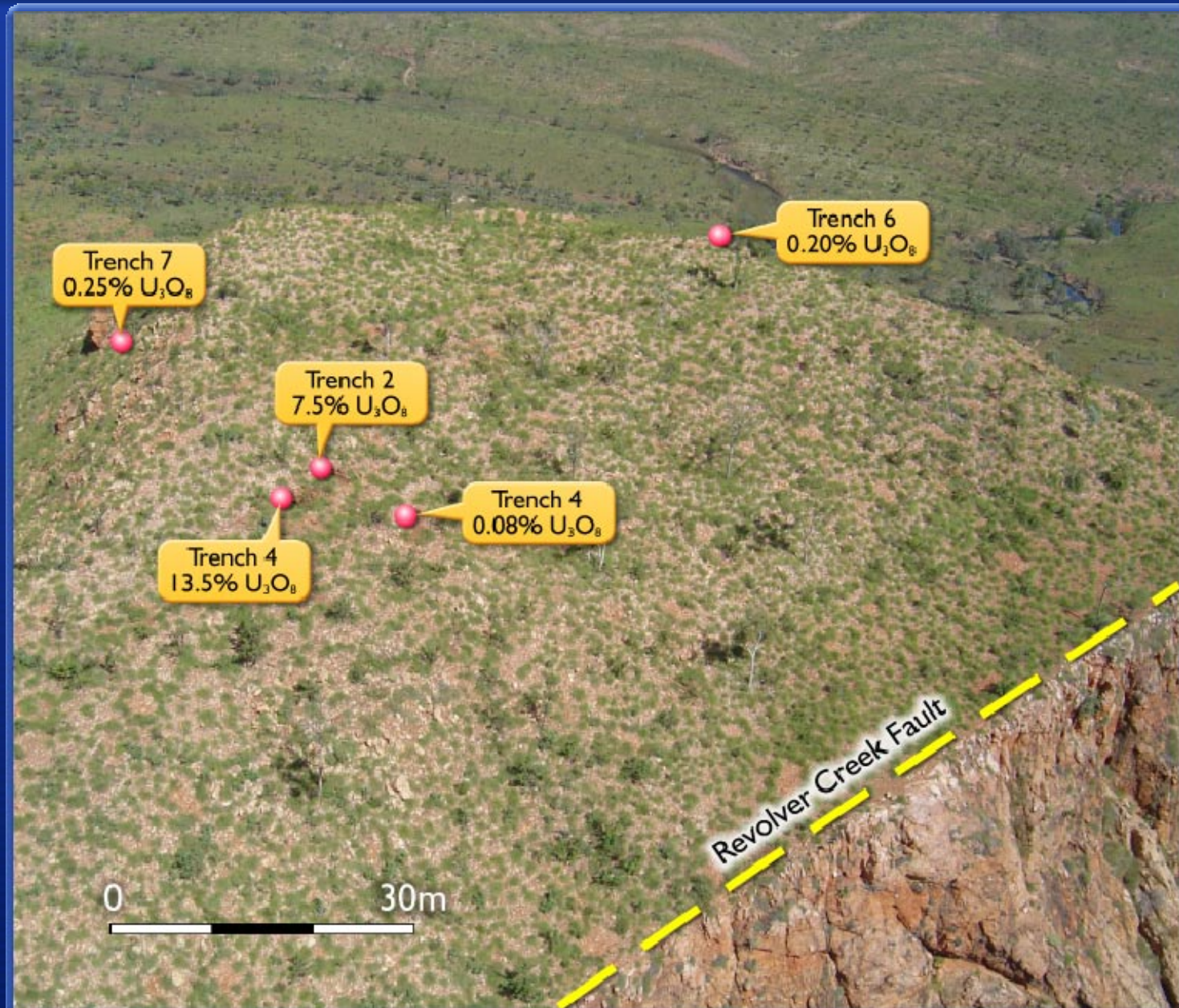
North Australian Uranium Province



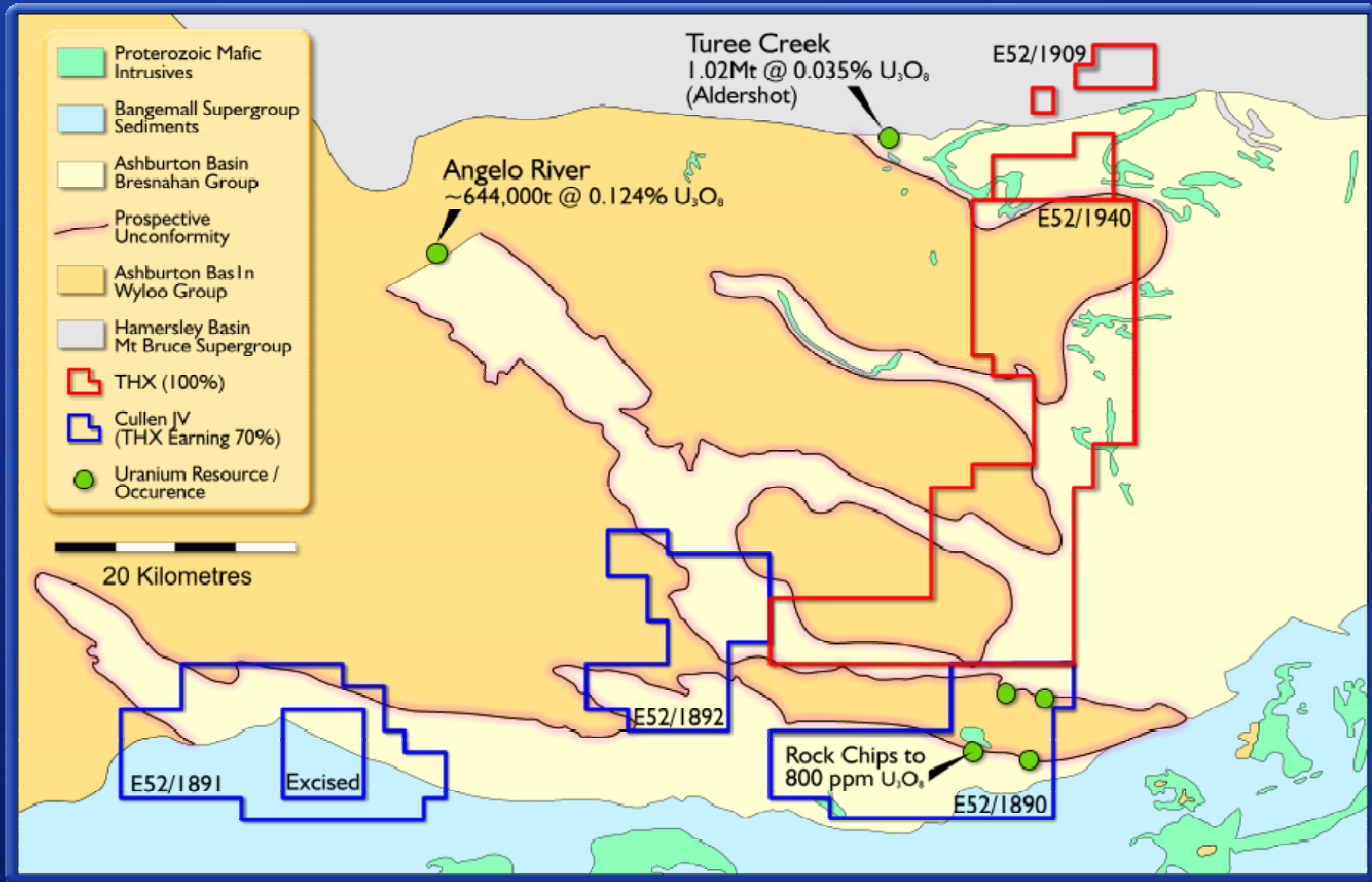
Spinifex Uranium Project



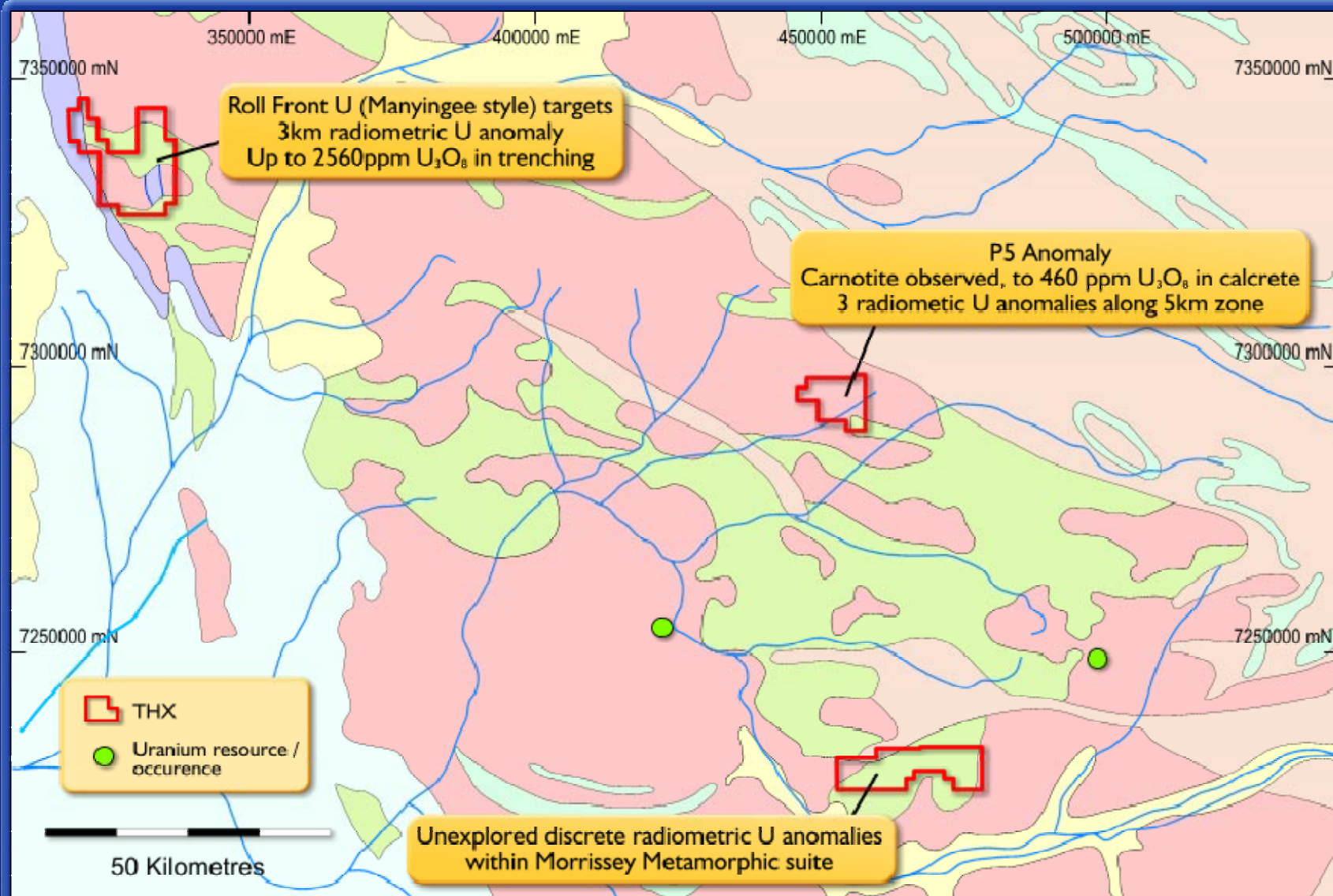
Spinifex Uranium Prospect



Kunderong



Gascoyne



Northern Territory – Uranium Projects

Project	Area (km ²)	Uranium Target Style	Highlights
Ngalia Basin	1,835	Sandstone	Same stratigraphy as Bigryli (3,853t U ₃ O ₈), Previous drilling 0.5m @ 5248ppm U ₃ O ₈ , 4m @ 1240ppm U ₃ O ₈
Frances Maude	20	Vein	Same rock types as nearby deposits Radiometric anomalies Limited past drilling, 0.2m @ 0.154% eU ₃ O ₈ , 0.2m @ 0.144% eU ₃ O ₈ , 20m wide zone reported as >180ppm eU ₃ O ₈
Hayes Creek	7	Vein	1km long airborne U channel anomaly
Illamurta	244	Sandstone	5 significant airborne U channel anomalies never explored for uranium
Dashwood	1,559	Sandstone/ Calcrete	Weak airborne U channel anomalous zones over drainage channels

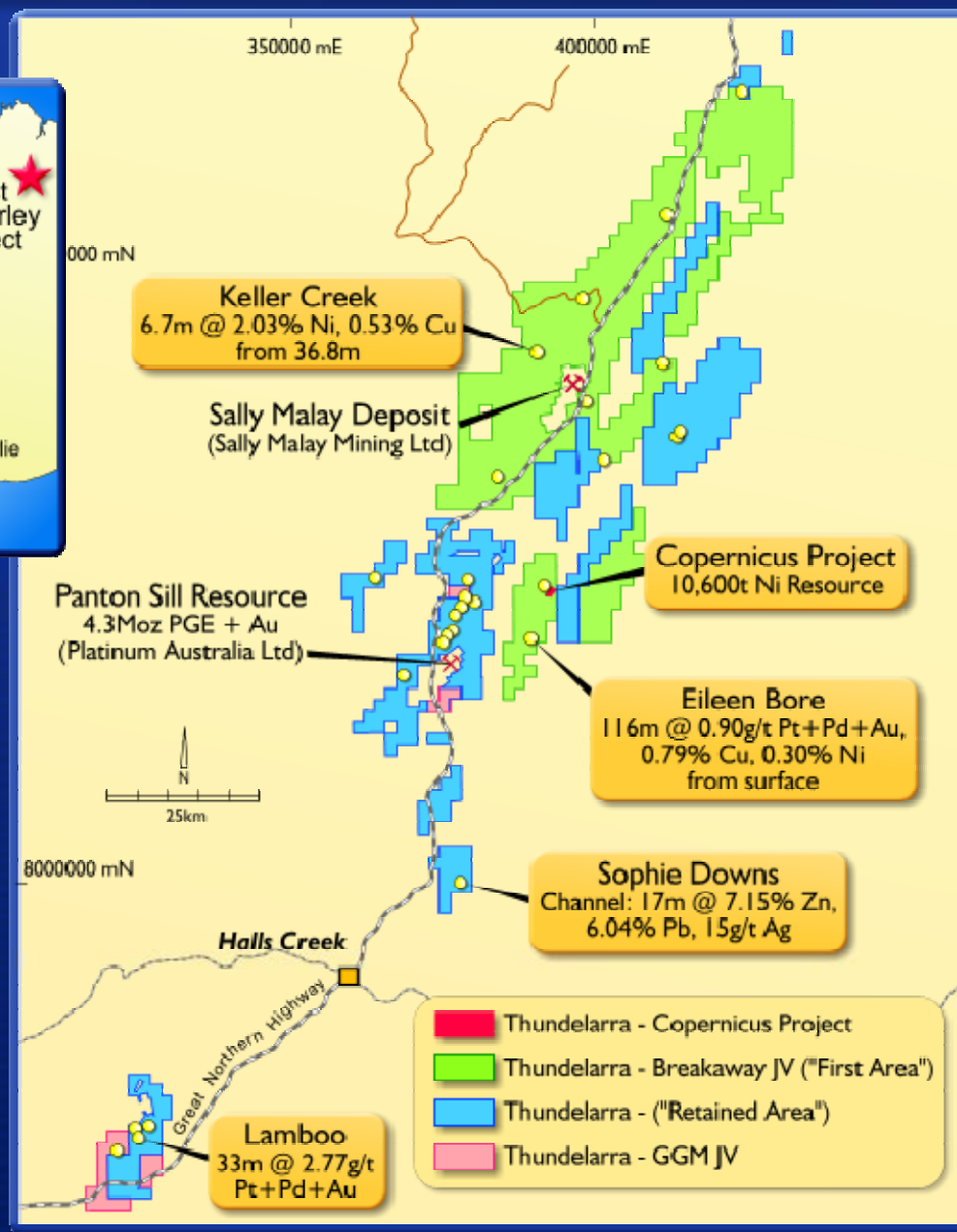
Western Australia – Uranium Projects

Project	Area (km ²)	Uranium Target Style	Highlights
Spinifex	720	Unconformity/ Vein	6 high priority airborne radiometric anomalies High grade rock chips of 13.6% U ₃ O ₈ and 6.3% U ₃ O ₈ Never drilled
Kunderong	1,191	Unconformity	Same stratigraphy as Turee Creek and Angelo River deposits. Rock chips of 230, 166, 140ppm U ₃ O ₈
Kennedy Range	93	Sandstone	Several airborne radiometric anomalies Trench samples to 2560ppm U ₃ O ₈
Mt Phillips	78	Calcrete	Anomalous calcrete samples to 460ppm U ₃ O ₈
Glenburgh	149	Vein	Discontinuous radiometric anomalies over 5km strike
Carola Valley	255	Unconformity	Same stratigraphy as nearby Mad Gap prospect which has rock chips to 4.65% U ₃ O ₈ and intersections to 0.208% U ₃ O ₈
Yuinmery	858	Calcrete	Large tenement holding contiguous to Yuinmery uranium resource. Untested radiometric anomalies.

QLD & SA – Uranium Projects

Project	Area (km ²)	Uranium Target Style	Highlights
Gregory Range	182	Vein	Number of airborne U channel anomalies over 5km by 2km area Anomalous rock chips inc 440, 155 and 130ppm U
Clarke River	543	Vein	10 spot airborne U channel anomalies
William Creek	755	Calcrete	Two airborne U channel anomalies

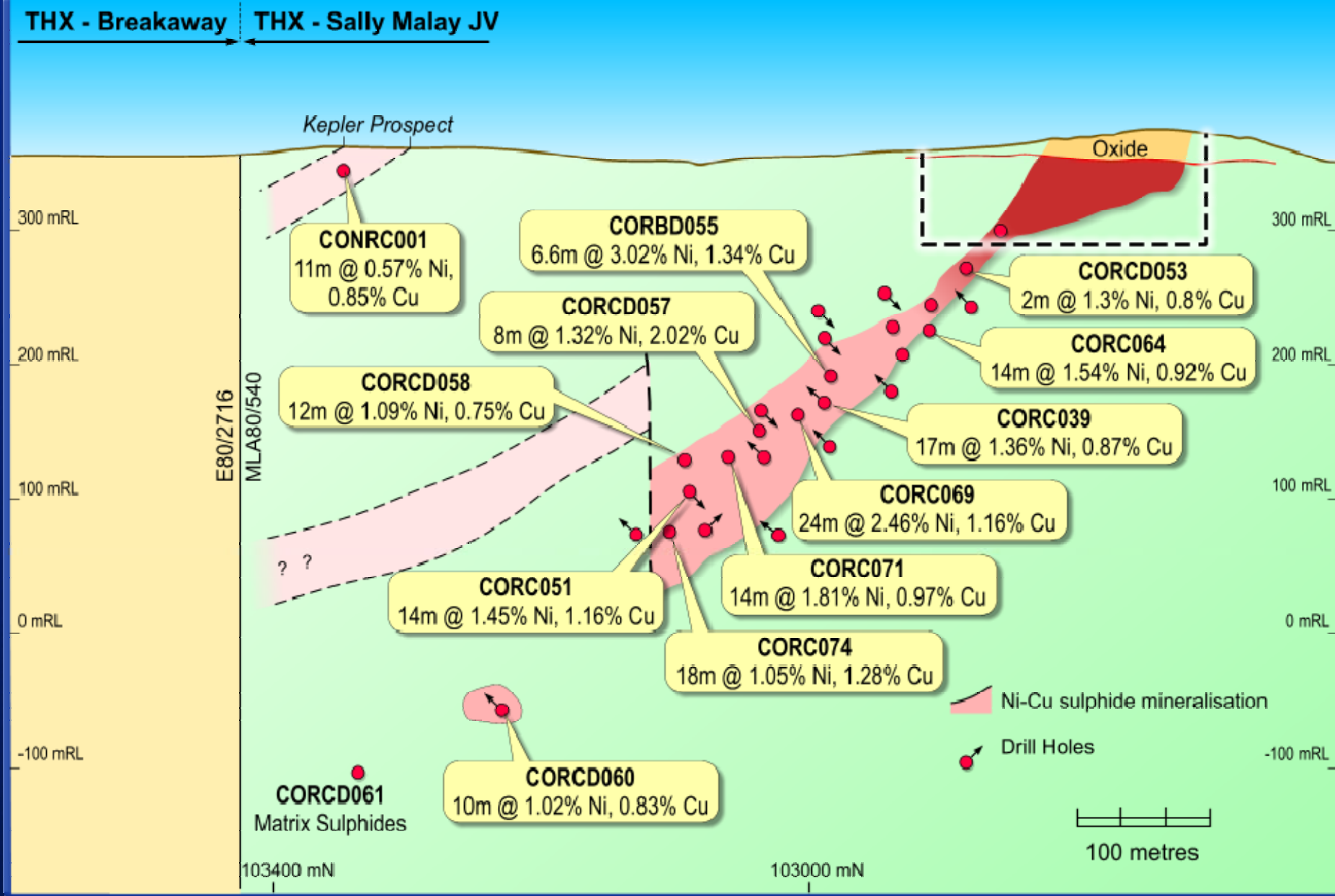
East Kimberley Nickel Project Area



Copernicus Joint Venture

- ✦ Thundelarra 40% Sally Malay 60%
- ✦ Sally Malay spending \$3.5M over 4 years to maintain its 60% equity
- ✦ Open cut nickel production scheduled for late of 2007
- ✦ Ore resource estimate 10,600 tonnes nickel, 6,100 tonnes copper and 370 tonnes cobalt
- ✦ Total in ground value US\$480 million (31Jan 07)
- ✦ Good exploration potential

Copernicus Long Section



Investments

Current Value in Listed Companies

 United Minerals Corporation NL	(ASX:UMC)
Fully Paid Share Price Close 38 Cents	\$8,200,000
Listed Options Price Close 25 Cents	\$3,000,000
 Aldershot Resources Ltd	(TSX-V:ALZ)
Share Price Close 35 Cents	\$944,000 (C\$875,000)
 Royal Resources Limited	(ASX:ROY)
Share Price Close 18 Cents	\$160,000

Total Value of Investments

\$12,304,000

Cash at Bank

\$4,100,000 (29 Jan 07)

Share price close was calculated on 2 February 2007

Strategy for Growth

- ✦ Dedicated Base Metal / Platinum and Uranium divisions
- ✦ Well funded exploration budgets
- ✦ Aggressive field exploration activities
- ✦ Active global project generation program