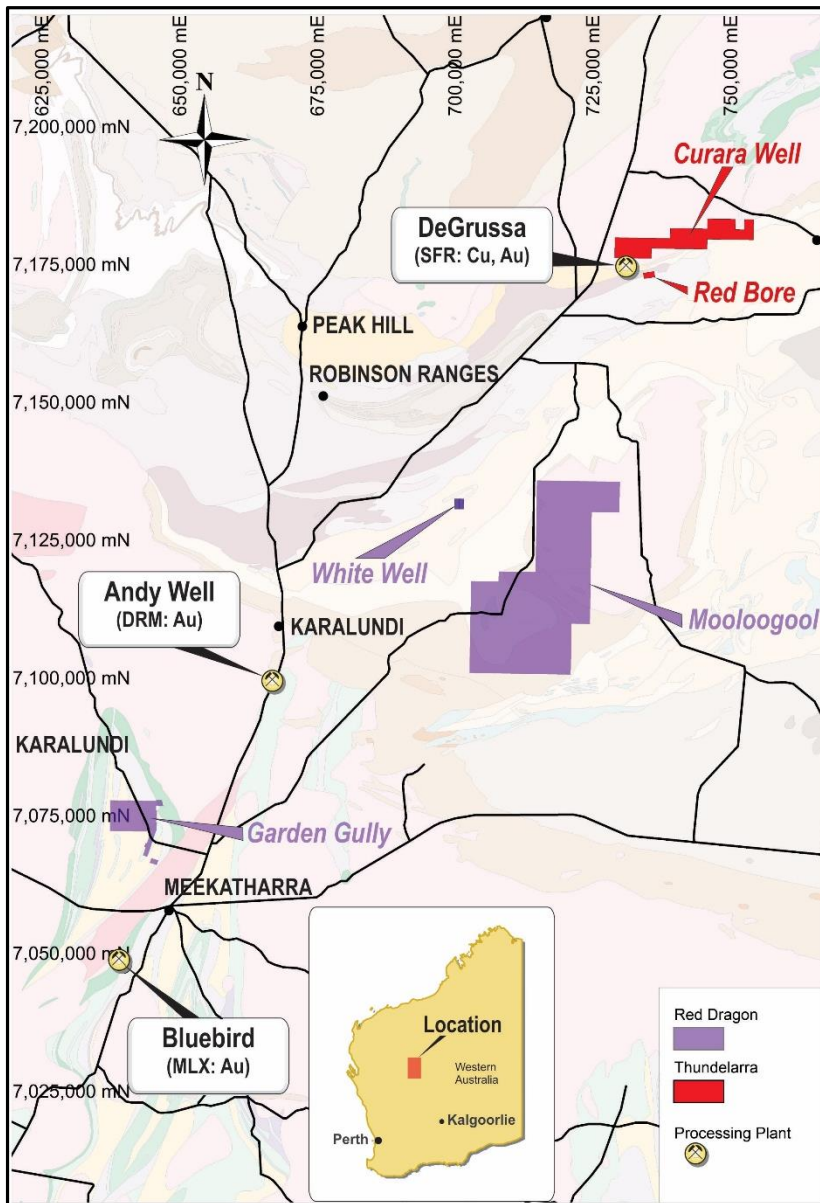


GARDEN GULLY DRILL RIG MOBILISED

Thundelarra is pleased to announce that a drilling rig is currently mobilising to commence an initial programme to test targets at the Garden Gully Gold Project. Garden Gully is located approximately 20 kilometres north of Meekatharra in Western Australia.



The planned programme will total approximately 3,000m of drilling:

- 2,000m of air core drilled to blade refusal (expected to average ~80m depth); and
- 1,000m of deeper follow-up RC drilling to test in more detail appropriate targets identified from the air core.

The project geologist may amend the programme as warranted, based on the geological data obtained hole by hole.

Details of the hole locations and targets will follow when the rig is on site and the programme has commenced successfully.

For Further Information Contact:
Mr Tony Lofthouse - Chief Executive Officer
+61 8 9389 6927

THUNDELARRA LIMITED
Issued Shares: 337.3M
ASX Code: THX