

MINING 121 CONFERENCE PRESENTATION

Thundelarra CEO Tony Lofthouse will deliver a presentation at the Mining 121 Conference that is being held in Hong Kong on Wednesday 29 and Thursday 30 March 2017.

The presentation will outline the exciting gold exploration targets being tested by drilling currently underway at the Garden Gully gold project located near Meekatharra, a proven gold-producing district in Western Australia's Eastern Goldfields. The Garden Gully gold project is Thundelarra's flagship exploration project at present.

The presentation also provides brief updates on other targets in our exploration portfolio, including copper-gold at Red Bore; copper-graphite-uranium at Allamber; zinc and graphite at Sophie Downs; and nickel at Keller Creek (where Thundelarra has a 20% free carried interest).

To view, please see the attached pdf of the presentation or visit the Company's website

www.thundelarra.com.au

then navigate to the [Investors] [Presentations] tab.

For Further Information Contact:
Mr Tony Lofthouse - Chief Executive Officer
+61 8 9389 6927

THUNDELARRA LIMITED
Issued Shares: 426.5M
ASX Code: THX

Thundelarra Garden Gully Shaping Up



THUNDELARRA

Mining 121 Conference
Hong Kong
29-30 March 2017

Investment Rationale

- **Strong management team**
200 years' combined experience in all aspects of the resource sector
- **History of successes**
Yilgarn Star gold; UMC iron ore; Copernicus nickel; Thunderball uranium; now Garden Gully?
- **News flow**
Garden Gully Phase 3 follow-up drilling underway
- **Garden Gully upside: 7m at 24.5 gpt Au and 80m at 1.9 gpt Au at Lydia**
- **2017 drilling planned for Garden Gully, Red Bore, Sophie Downs**
- **Red Bore still offers potential DeGrussa VHMS repetitions**
- **Diverse exploration portfolio, all with discovery potential**
Apart from Garden Gully and Red Bore: zinc at Sophie Downs; nickel at Keller Creek; graphite at Sophie Downs and at Allamber; plus uranium.....

Why Thundelarra? Why now?

Actively aggressive explorer that puts money in the ground

- Strong management team, relevant experience, record of success
- ~A\$1M cashburn for last 20 quarters: always >67% into the ground
- Clear strategic commodity focus: gold and copper
- Garden Gully shaping up as a major new gold discovery
- Projects in active exploration areas, near plants hungry for ore
- 2017 follow-up drilling at Garden Gully, Red Bore – many targets
- Red Bore still offers potential DeGrussa VHMS repetitions
- Excellent leverage to discovery: >90% ownership
- A\$3M cash at 31 December 2016



Share Capital Structure

Listed on the Australian Stock Exchange: ticker THX.asx

➤ Fully paid shares	426.5 million
➤ Unquoted Options (<i>various exercise prices from \$0.06 to \$0.10</i>)	34.0 million

Market capitalisation (at \$0.051 on 23 February 2017)	\$ 21.8 million
Cash on hand (at 31 December 2016)	\$ 3.0 million
SPP and Placement funds raised (July 2016)	\$ 4.3 million
Equity investments (at 28 February 2017)	\$ 0.2 million
Tranche 2 Hayes Creek sale (due by 28 April 2017)	\$ 0.9 million

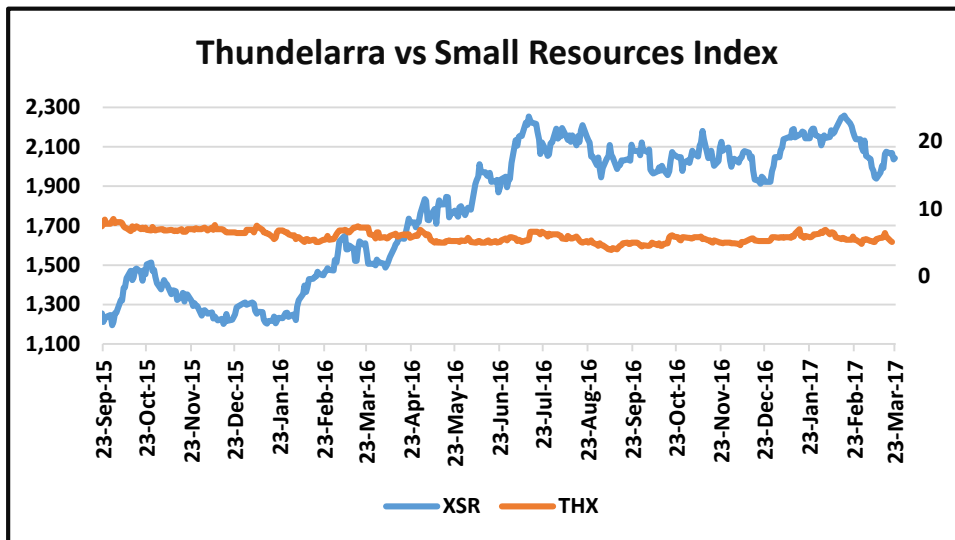
Top Shareholders (at 24 February 2017)

1. Ragged Range Mining Pty Ltd	13.0%
2. Chin Nominees Pty Ltd	7.9%
3. Siat Yoon Chin	4.3%

Top 20 Shareholders	40%
Board and Management	16%

Recent price performance

Thundelarra is a relatively liquid stock compared to many junior explorers. Price catalysts from active exploration programmes translate to share market action.



The lag behind ASX Small Resources index should correct with further positive results from follow-up drilling at Garden Gully.

18 Month Trading Statistics

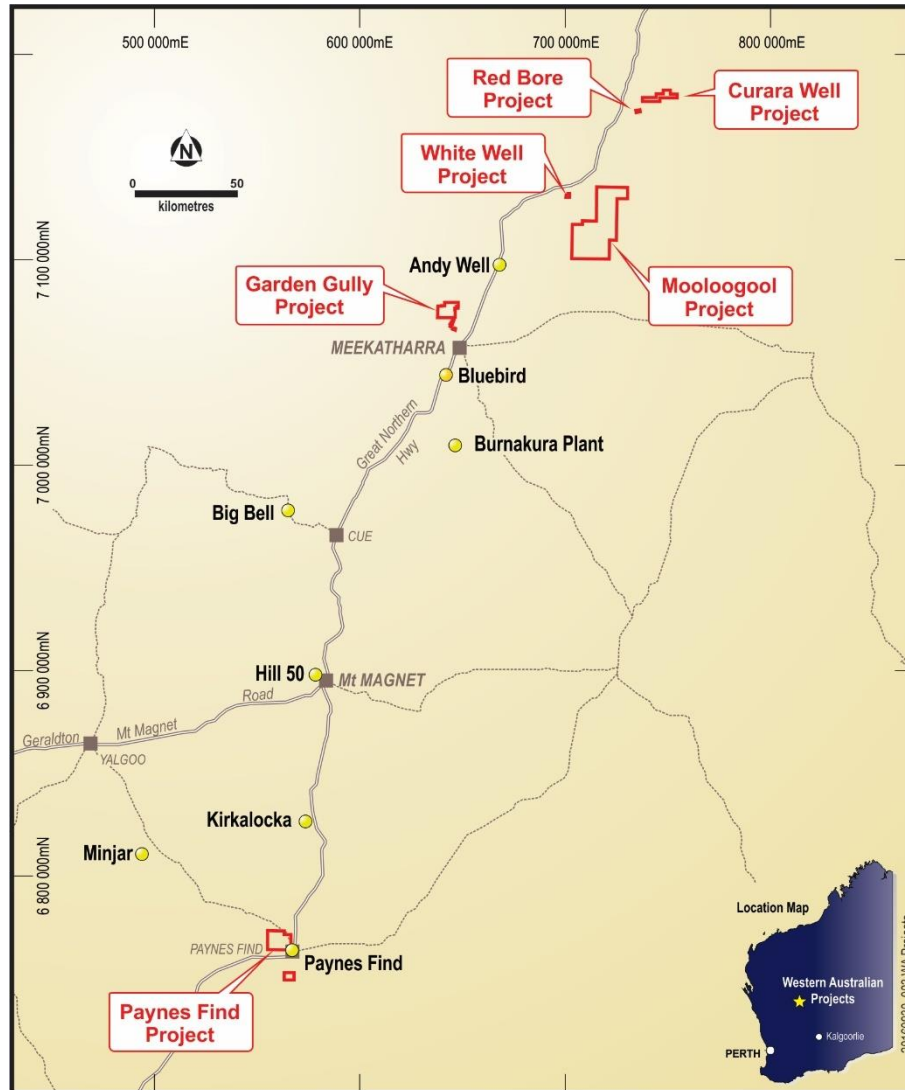
(From 24 September 2015 to 23 March 2017)

Total shares traded:	160 million
Percentage of Issued Capital:	37%
Total value:	A\$9.1 million
Average daily turnover:	0.44 million
Average daily value:	A\$25,000
12 month high-low	A\$0.074 - A\$0.037

Further newsflow and price catalysts:
Garden Gully follow-up RC and diamond drilling to test Lydia, Transylvania, Battery and Granite Well targets;
Red Bore: Impaler follow-up;
Sophie Downs: conductors to be tested.



West Australian project portfolio



Red Bore, Curara Well

- Copper-gold next to DeGrussa mine
- Still highly prospective

Garden Gully

- Drilling new large gold system
- Close to Andy Well, Bluebird plants

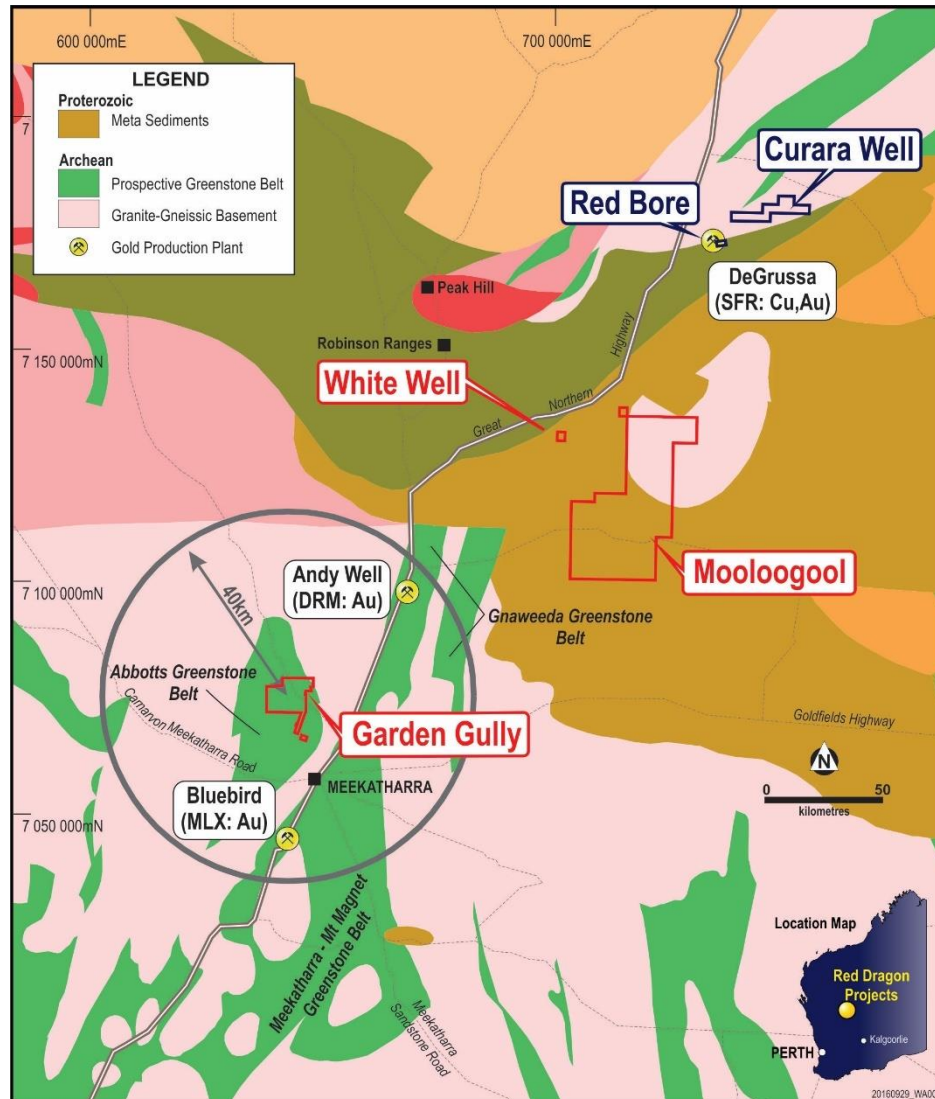
Mooloogool, White Well

- Possible VHMS target setting
- SFR farmed into ENT's ground
- Historical gold: 1,282 gpt in rock chip

Payne's Find

- Historical gold production
- Greenfields exploration

Meekatharra gold portfolio



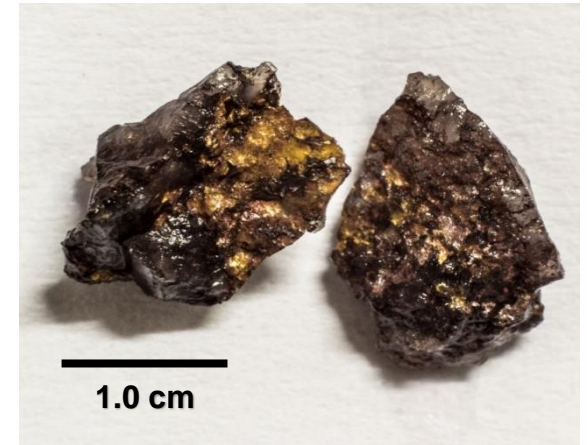
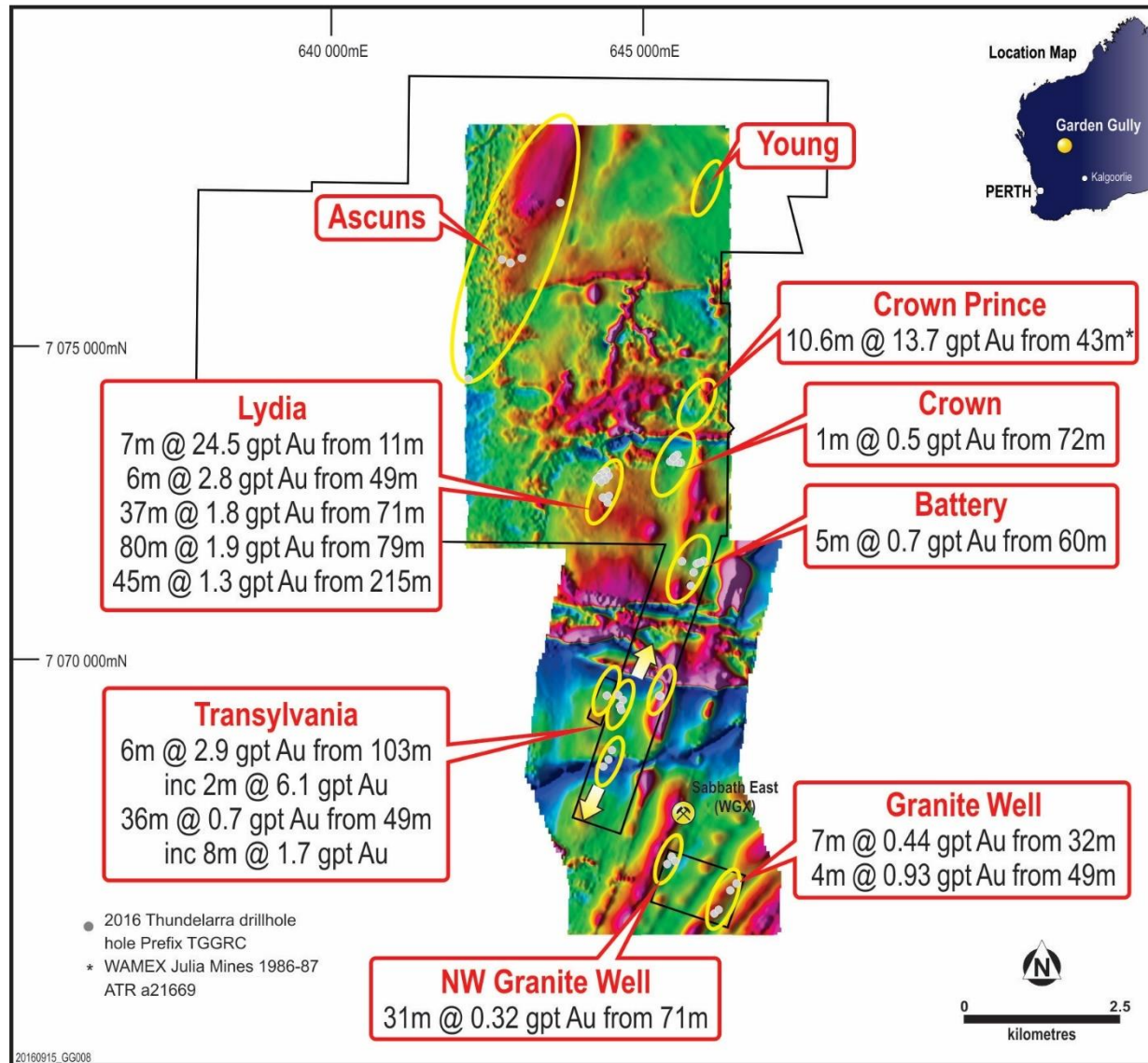
Garden Gully

- Close to Andy Well plant (300ktpa) and Bluebird plant (3.1Mtpa)
- DRM and WGX actively exploring
- 21 koz at 21 gpt historic production
- Interpreted as a standard Eastern Goldfields greenstone belt setting

Mooloogool, White Well

- Surface gold occurrences
- Structural setting similar to Jenkin Fault Zone near DeGrussa? VHMS?
- ENT's ground surrounds White Well and abuts Mooloogool. Now SFR JV.

Garden Gully Gold : spectacular intercepts



Visible gold in drill
chips from Lydia:
7m at 24.5 gpt Au

Map shows selected
drill intercepts from
Phase 1 and 2 drill
programmes

Multiple locations with gold mineralisation

7m at 24.5 gpt Au from 11m in TGGRC018
6m at 2.8 gpt Au from 49m in TGGRC015
including 2m at 8.0 gpt Au from 49m
37m at 1.8 gpt Au from 71m in TGGRC026
including 12m at 4.0 gpt Au from 96m
80m at 1.9 gpt Au from 79m in TGGRC034
including 5m at 6.0 gpt Au from 81m
and 16m at 3.8 gpt Au from 113m
45m at 1.3 gpt Au from 215m in TGGRC033
including 14m at 2.2 gpt Au from 216m
and 15m at 1.6 gpt Au from 243m
6m at 2.9 gpt Au from 103m in TGGRC022
8m at 1.7 gpt Au from 69m in TGGRC024
7m at 1.4 gpt Au from 107m in TGGRC044
5m at 2.0 gpt Au from 115m in TGGRC042
9m at 1.5 gpt Au from 163m in TGGRC052
4m at 3.3 gpt Au from 164m in TGGRC053
8m at 2.2 gpt Au from 44m in TGGRC048
4m at 2.6 gpt Au from 56m in TGGRC051

Colour code:

Lydia

Transylvania

Battery

Granite Well

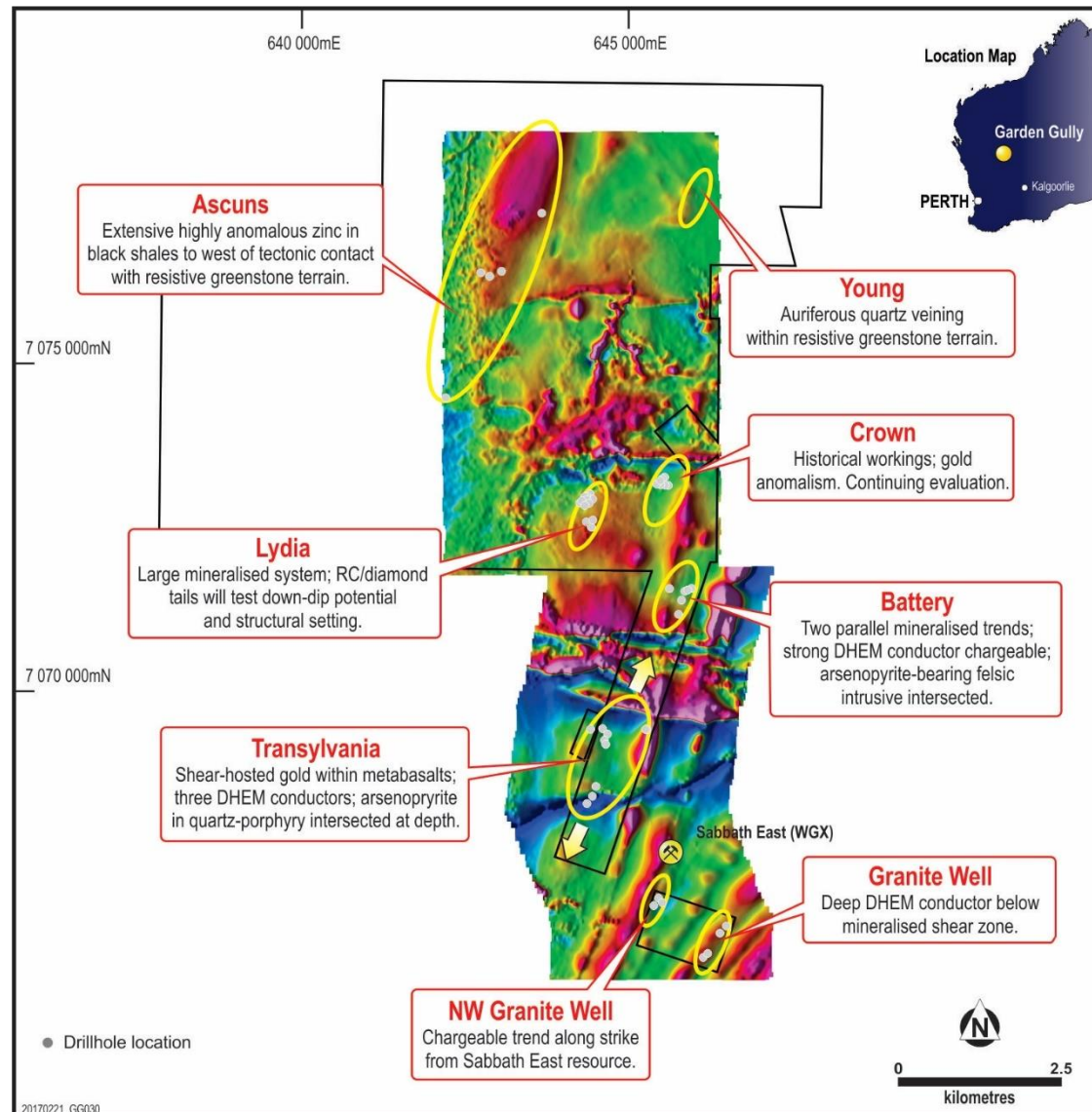
Major mineralised system.
True widths not yet known.

Current interpretation is of
mineralised zones with high
grade shoots: orientation to
be established in Phase 3 drill
programme underway now.



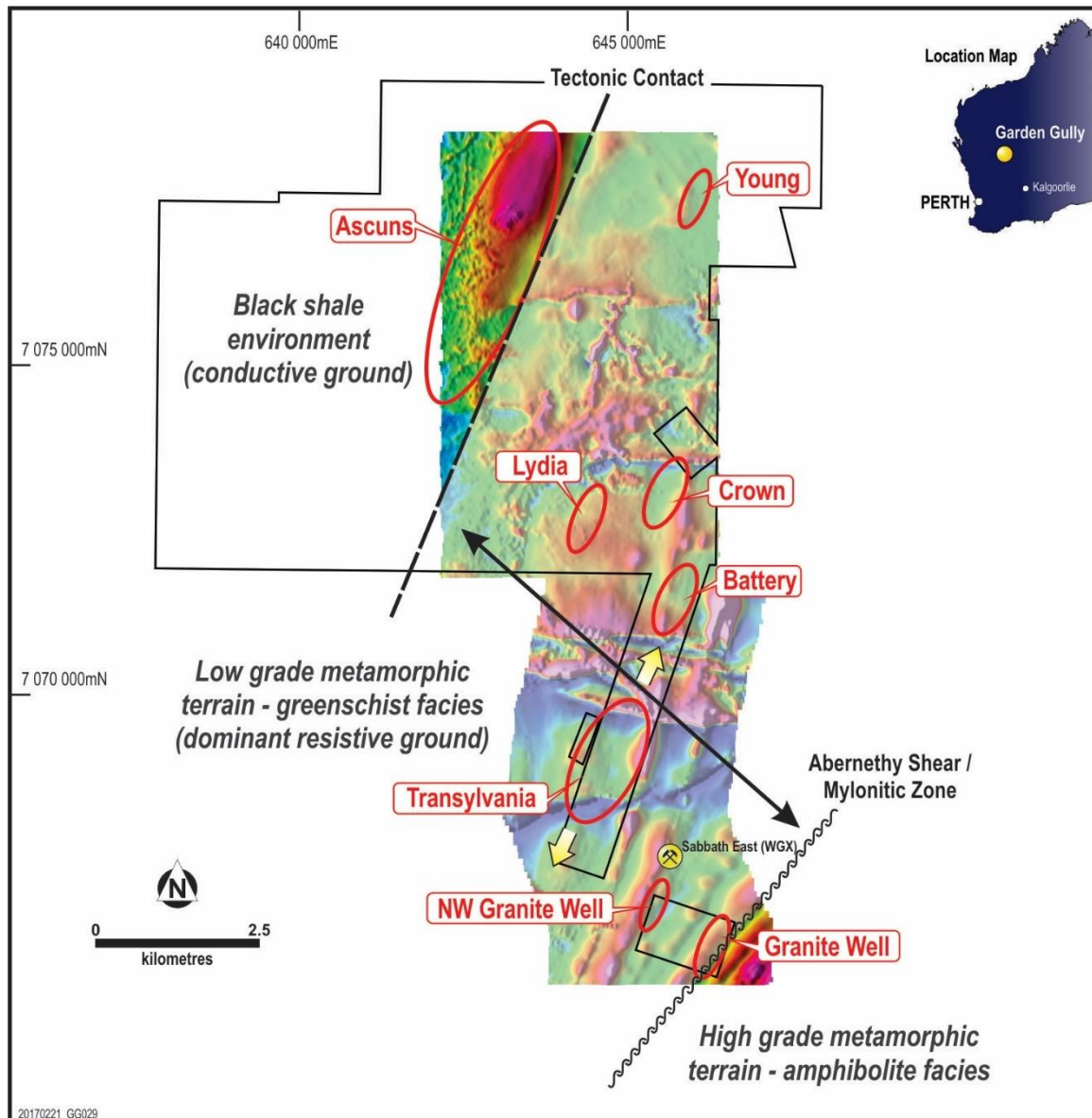
THUNDELARRA

Garden Gully : drilling follow-up targets



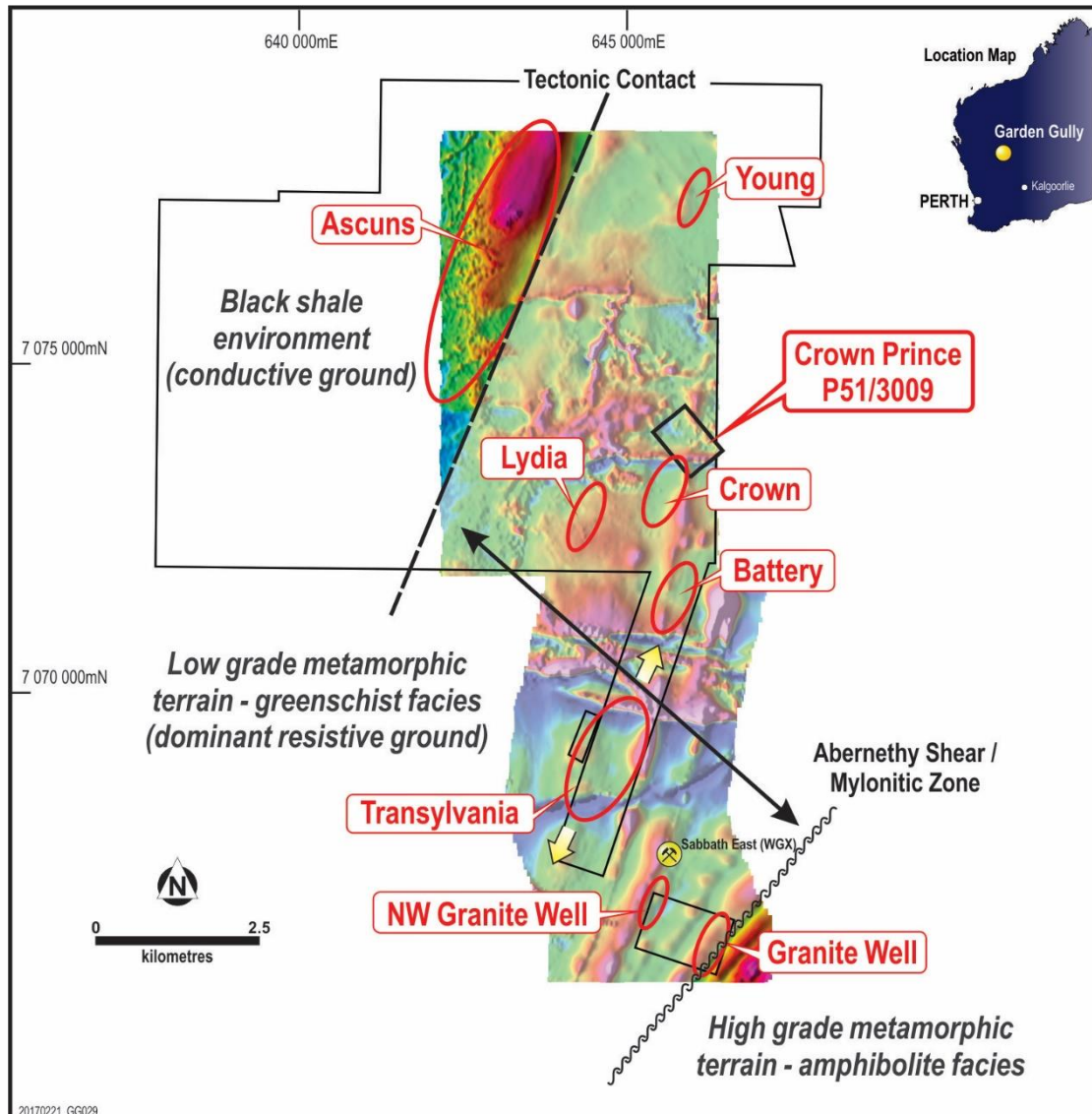
- 8 discrete target zones to be followed up.
- Historical interpretation was shear-hosted gold.
- Other mineralisation styles now identified.
- Gold targets as well as possible VHMS setting.
- Phase 2 follow-up RC: 6,432m in 29 holes.
- Phase 3 follow-up testing Lydia, Battery and Transylvania.

Three distinct geological terrains



- Exploration has defined three distinct terrains, or zones, at Garden Gully
- Black shale environment to the west (Ascuns) has VHMS potential
- Central zone has gold and VHMS potential
- Eastern zone is standard Meekatharra shear-hosted gold setting
- Understanding the setting improves discovery odds

Crown Prince acquisition adds excitement



ASX 02 March 2017

Historical exploration in 1986-87 by Julia Mines.

Diamond drill intercepts:

Hole	From (m)	Width (m)	Grade (gpt Au)
GGDH1	30.45	4.10	3.8
GGDH3	43.00	10.60	13.7
and	99.55	4.25	5.7
GGDH4	55.00	6.00	3.2
GGDH5	72.50	7.10	23.5
GGDH7	90.10	5.50	6.2
GGDH11	25.00	5.00	4.4

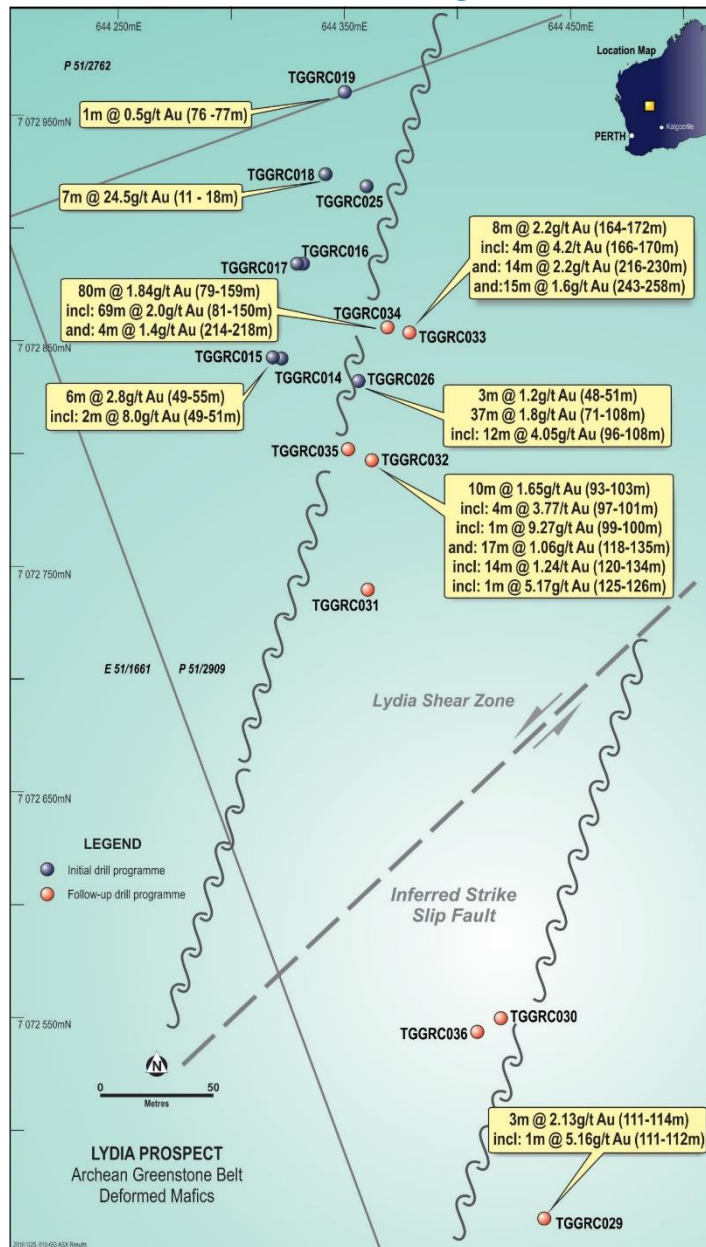
Source report: WAMEX ATR a21669

www.dmp.wa.gov.au

Mineralisation indicated to extend north and south into target prospects (eg Crown)



Garden Gully : stellar results at Lydia

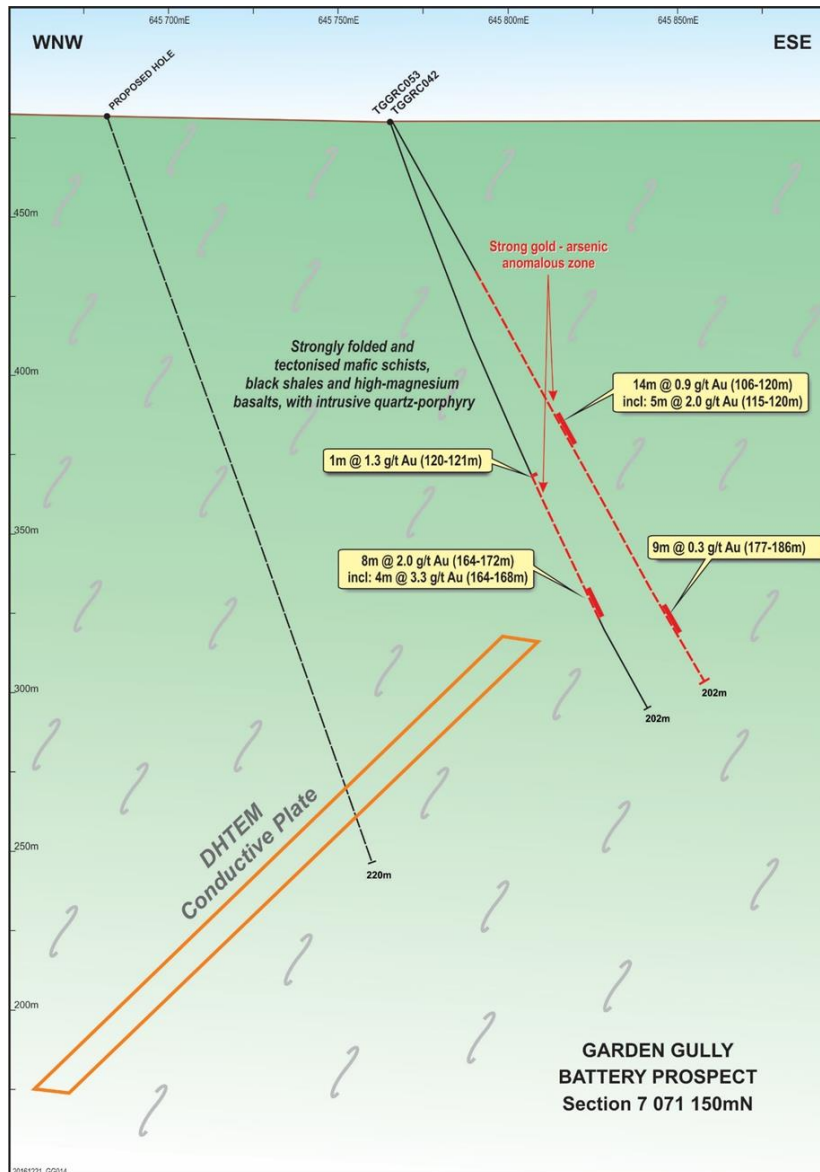


- ASX 03 November 2016
- Historical interpretation: shear-hosted gold
- 7m at 24.5 gpt Au in TGGRC018 at 11m
- 80m at 1.9 gpt Au in TGGRC034 from 79m
 - inc 5m at 6.0 gpt from 81m
 - and 16m at 3.8 gpt from 113m
- Highest 1m interval: 13.4 gpt Au

Grade Range (gpt Au)	<0.1	0.1 - 0.5	0.5 - 1.0	1.0 - 1.9	1.9 - 5.0	>5.0	Ave:1.9 gpt
No of 1m assays	6	27	8	11	18	10	80m total

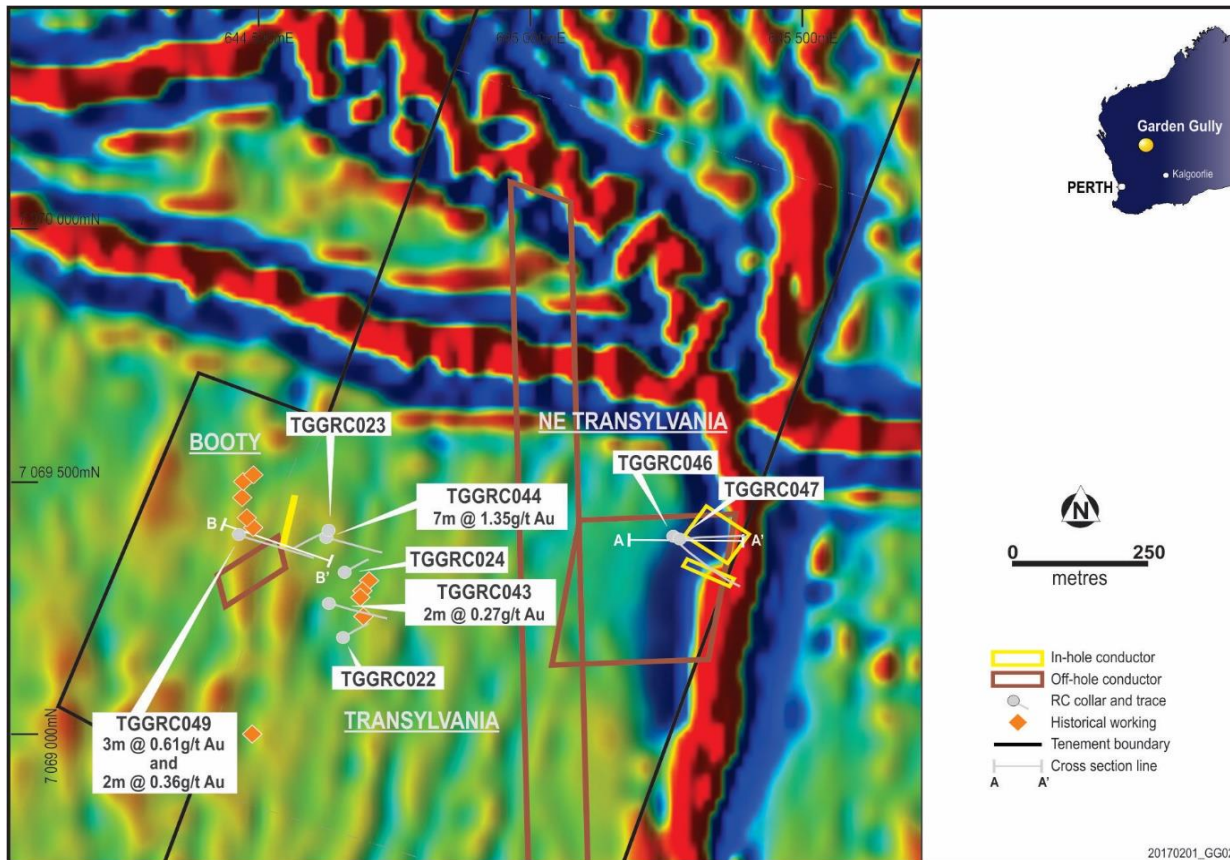
- 45m at 1.3 gpt Au in TGGRC033 from 215m
 - inc 14m at 2.2 gpt Au
 - and 15m at 1.6 gpt Au from 243m

Garden Gully : exciting results at Battery



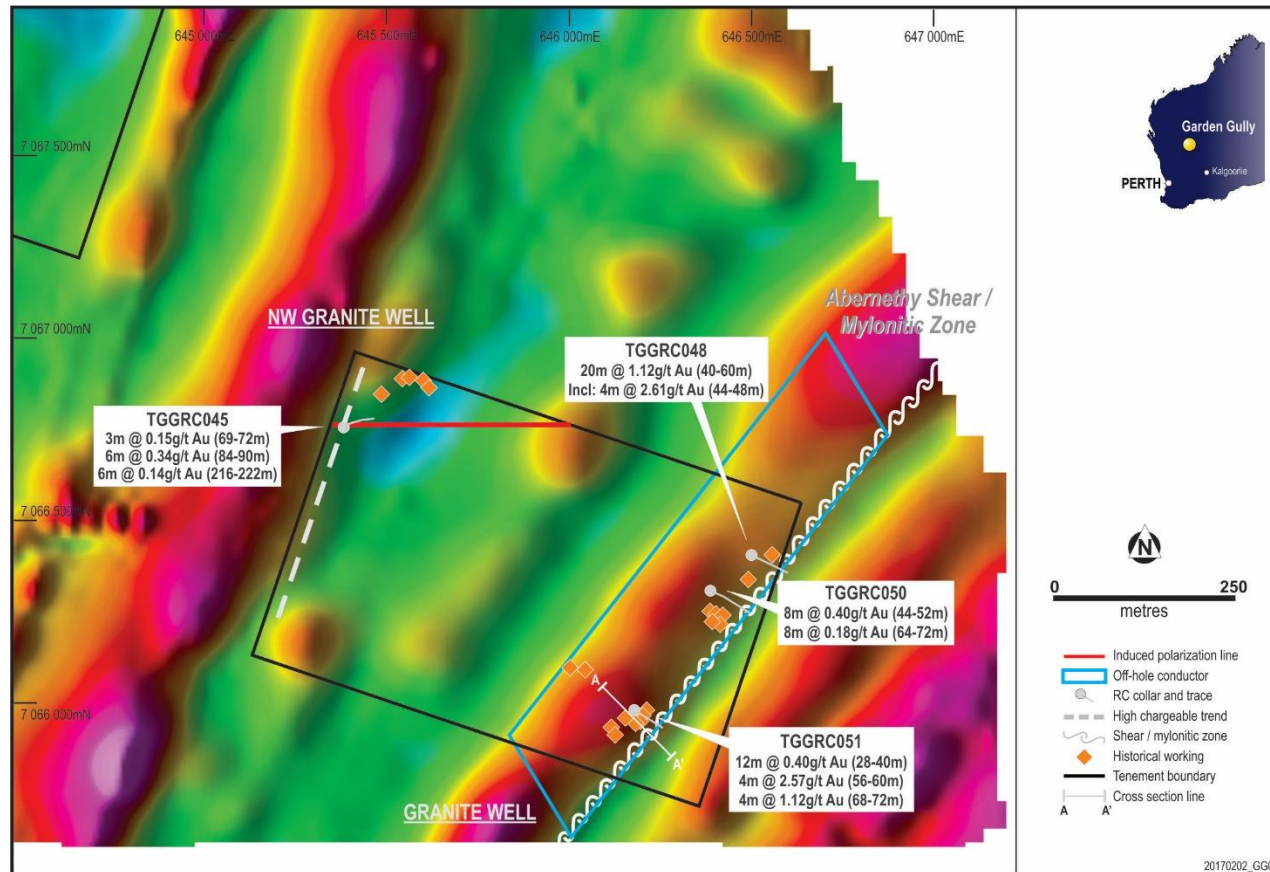
- ASX 19 January 2017
- 23m at 0.4 gpt Au from 77m in TGGRC042 in mineralised quartz porphyry
 - inc 5m at 2.0 gpt Au from 115m
- 9m at 1.5 gpt Au from 163m in TGGRC052
 - inc 4m at 2.4 gpt Au
- 8m at 2.0 gpt Au from 164m in TGGRC053
 - inc 4m at 3.3 gpt Au
- Setting shows similarities to Gilbeys (GCY)
- Significance of porphyry
- Large off-hole conductor needs testing
- Diamond hole TGGRCDD063 ("proposed hole" on diagram) is currently drilling.

Transylvania: three off-hole conductors



- ASX 08 February 2017
 - Setting exhibits similarities to Gilbeys, Dalgara (GCY)
 - Significance of black shales and porphyry
 - Alteration observed
 - Three strong off-hole conductors identified
- 7m at 1.4 gpt Au from 107m in TGGRC044
 - inc 2m at 4.0 gpt Au
 - Phase 3 drilling underway to test conductors and improve structural understanding

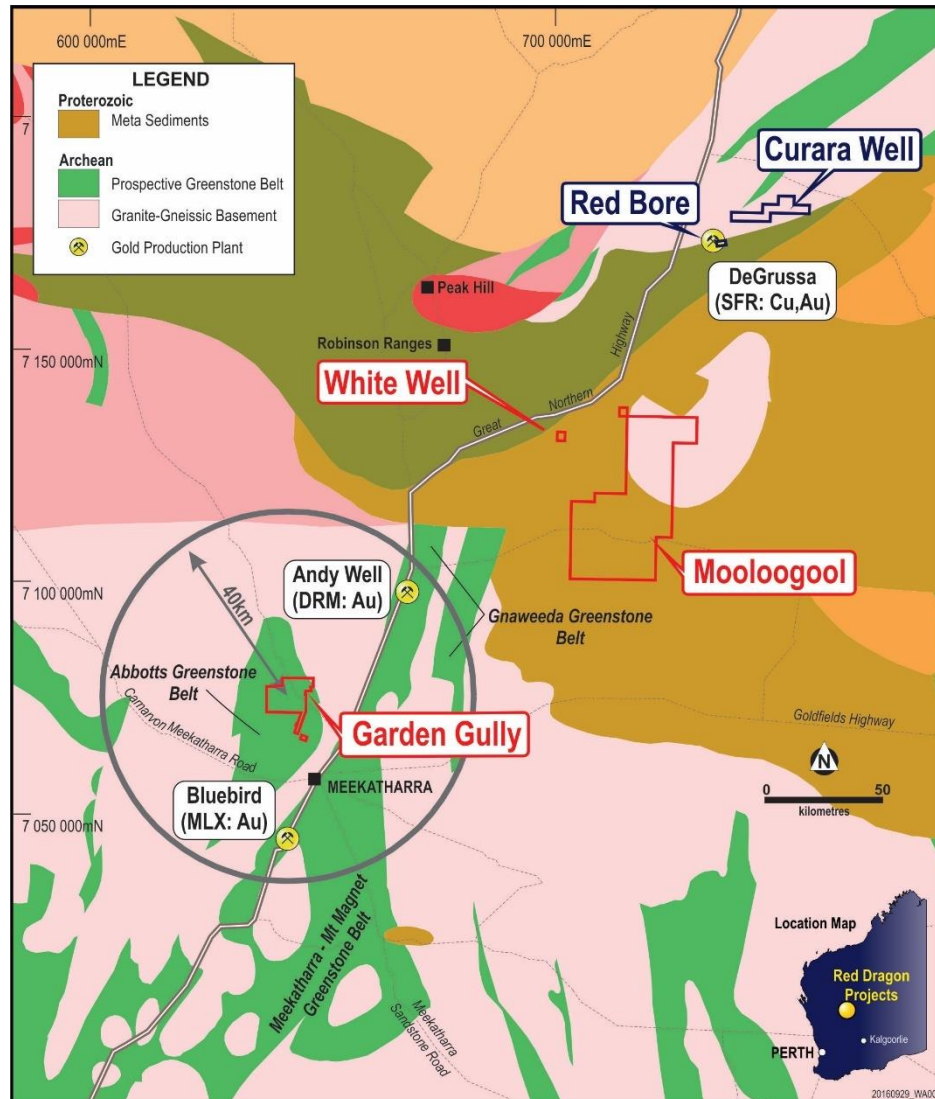
Granite Well: another off-hole conductor



- ASX 13 February 2017
- NW Granite Well along strike from Westgold's Sabbath East deposit
- Significance of change in geological terrains
- Shear-hosted targets at Granite Well
- Abernethy Shear Zone

- 20m at 1.1 gpt Au from 40m in TGGRC048
 - inc 4m at 2.6 gpt Au
- Conductor to be tested in next Phase of follow-up drilling

Meekatharra gold portfolio



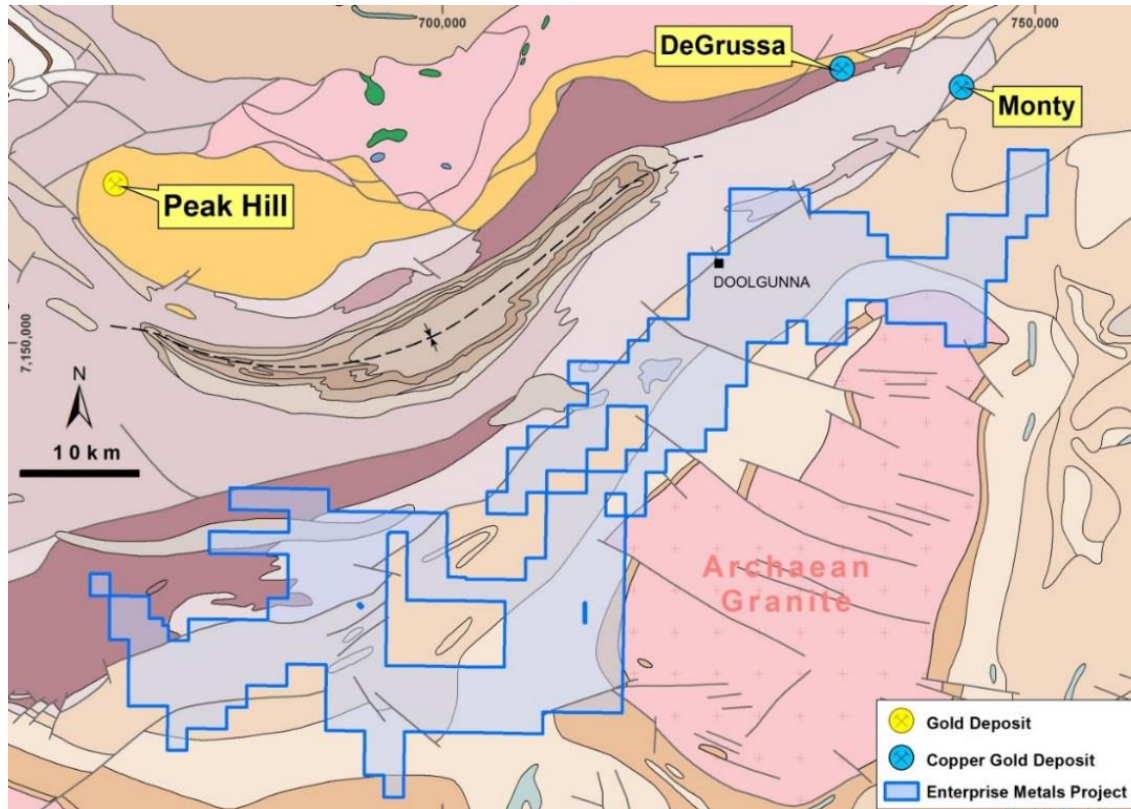
Garden Gully

- Close to Andy Well plant (300ktpa) and Bluebird plant (3.1Mtpa)
- DRM and WGX actively exploring
- 21 koz at 21 gpt historic production
- Interpreted as a standard Eastern Goldfields greenstone belt setting

Mooloogool, White Well

- Surface gold occurrences
- Structural setting similar to Jenkin Fault Zone near DeGrussa? VHMS?
- ENT's ground surrounds White Well and abuts Mooloogool. Now SFR JV.

Meekatharra gold portfolio



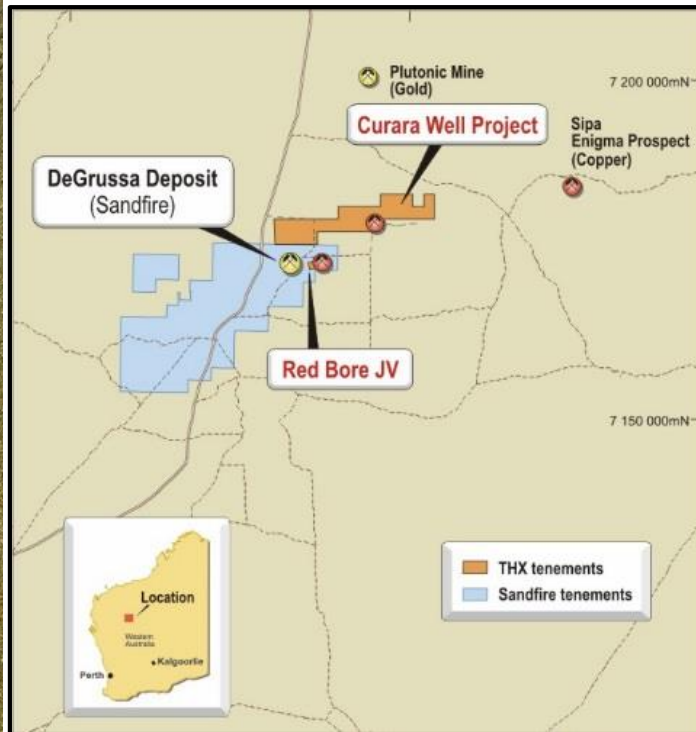
Sandfire / Enterprise

- ENT 12 October 2016 release to ASX
- SFR to spend \$1.5M over 2 years exploring
- SFR can earn up to 75% by identifying 50,000t copper

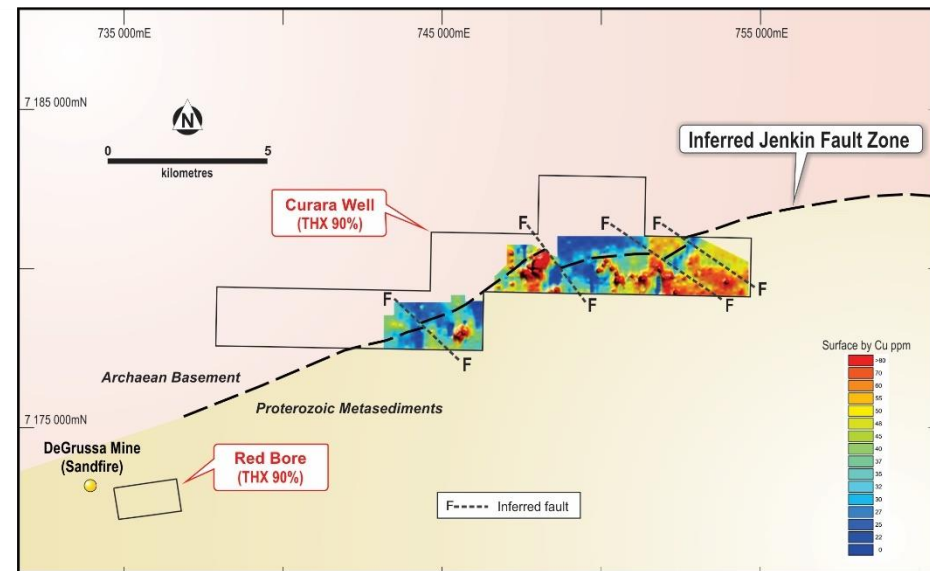
Mooloogool, White Well

- ENT's ground surrounds White Well and abuts Mooloogool. Now in JV with SFR, exploring actively.

Murchison: Red Bore, Curara Well (each 90%)



Next stage at Red Bore: collate all drilling, geological, assay, geophysical and petrological data to improve understanding of the mineralising system.



Red Bore – Gossan (14 July 2014)

DSO-grade chalcopyrite in drill core at 30m

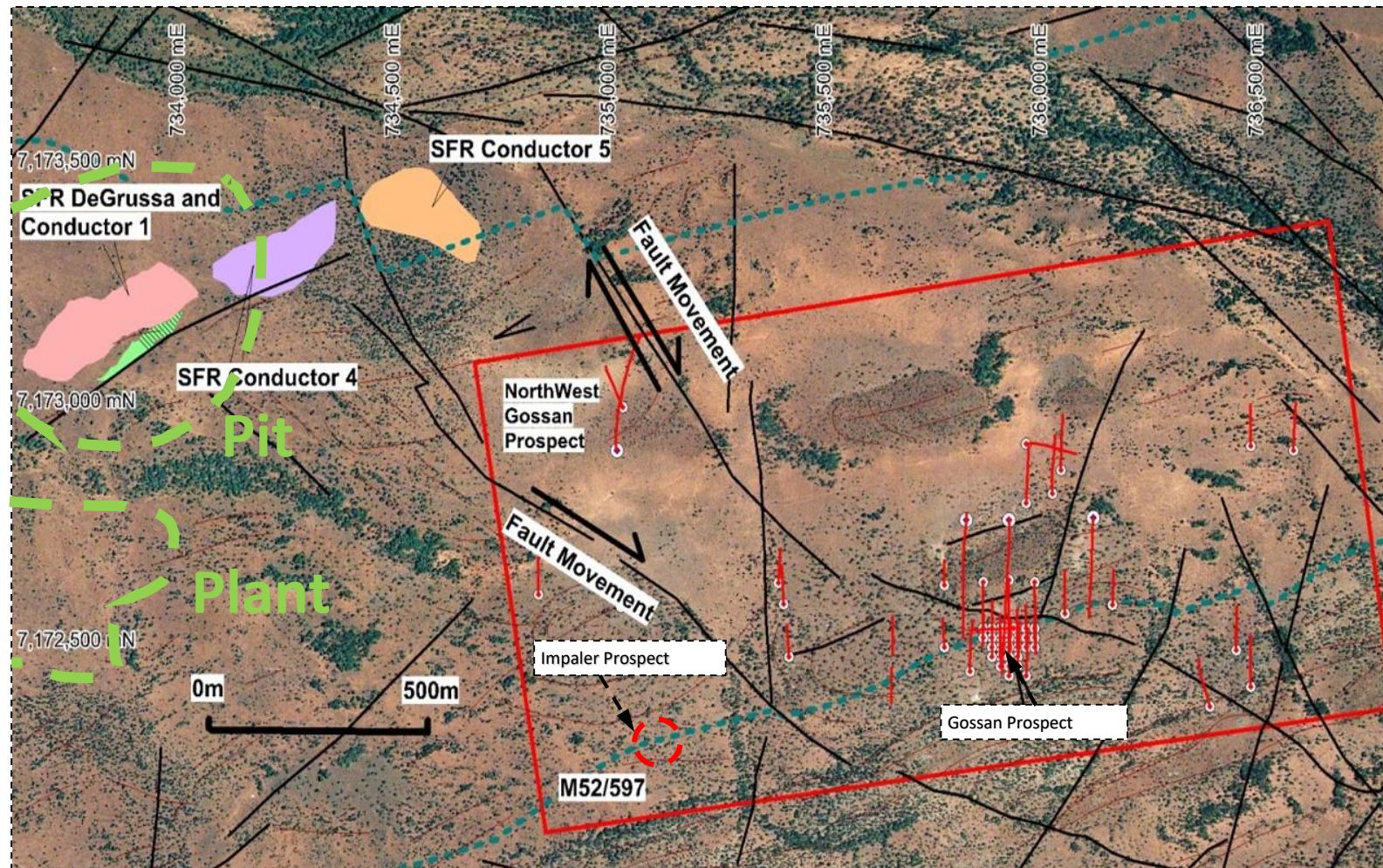
7.05m @ 28.4% Cu, 1.3gpt Au, 32.2gpt Ag

- *Deep VHMS target still indicated.*

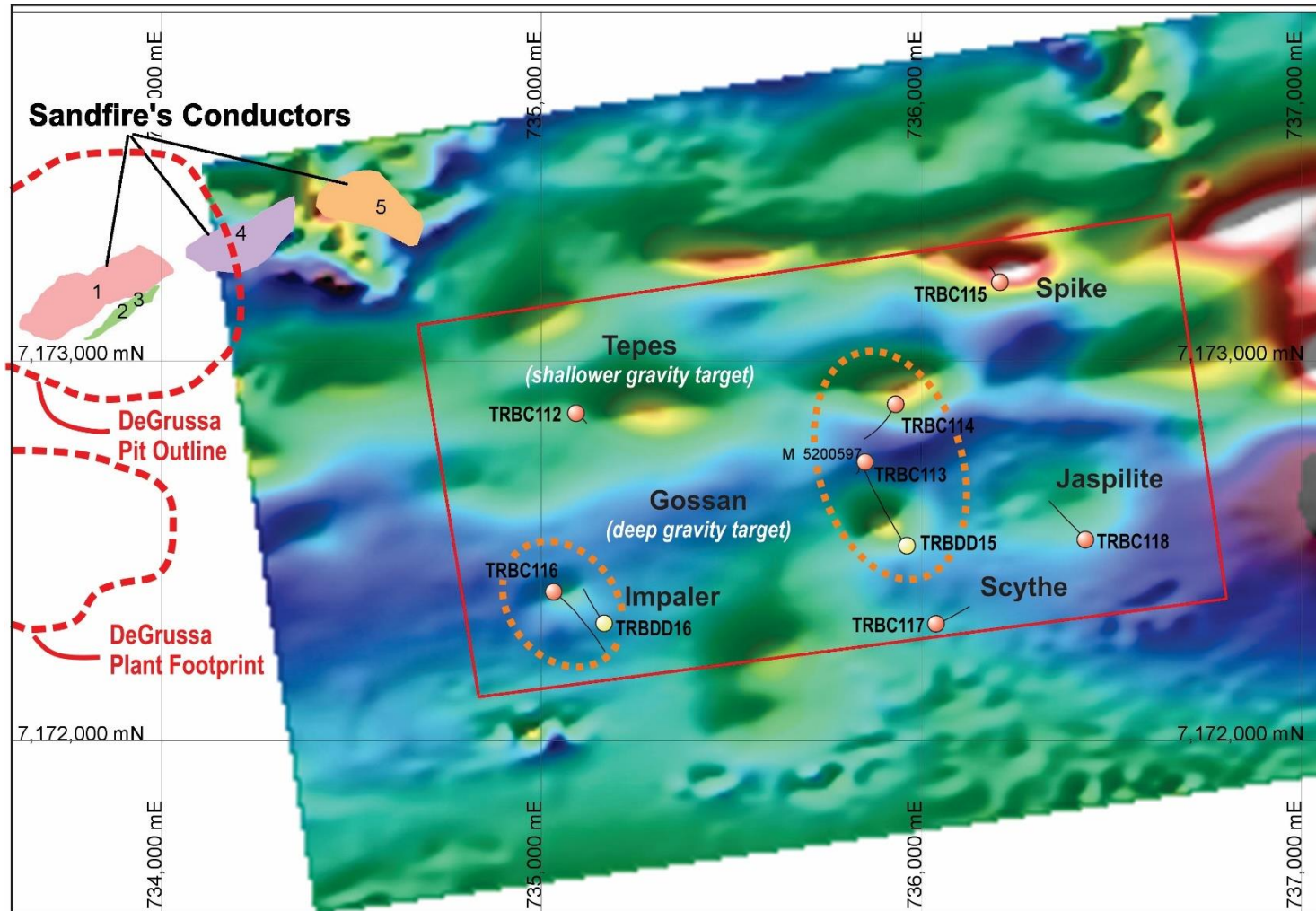
Red Bore - Impaler

- *VHMS setting, primary sulphides identified*

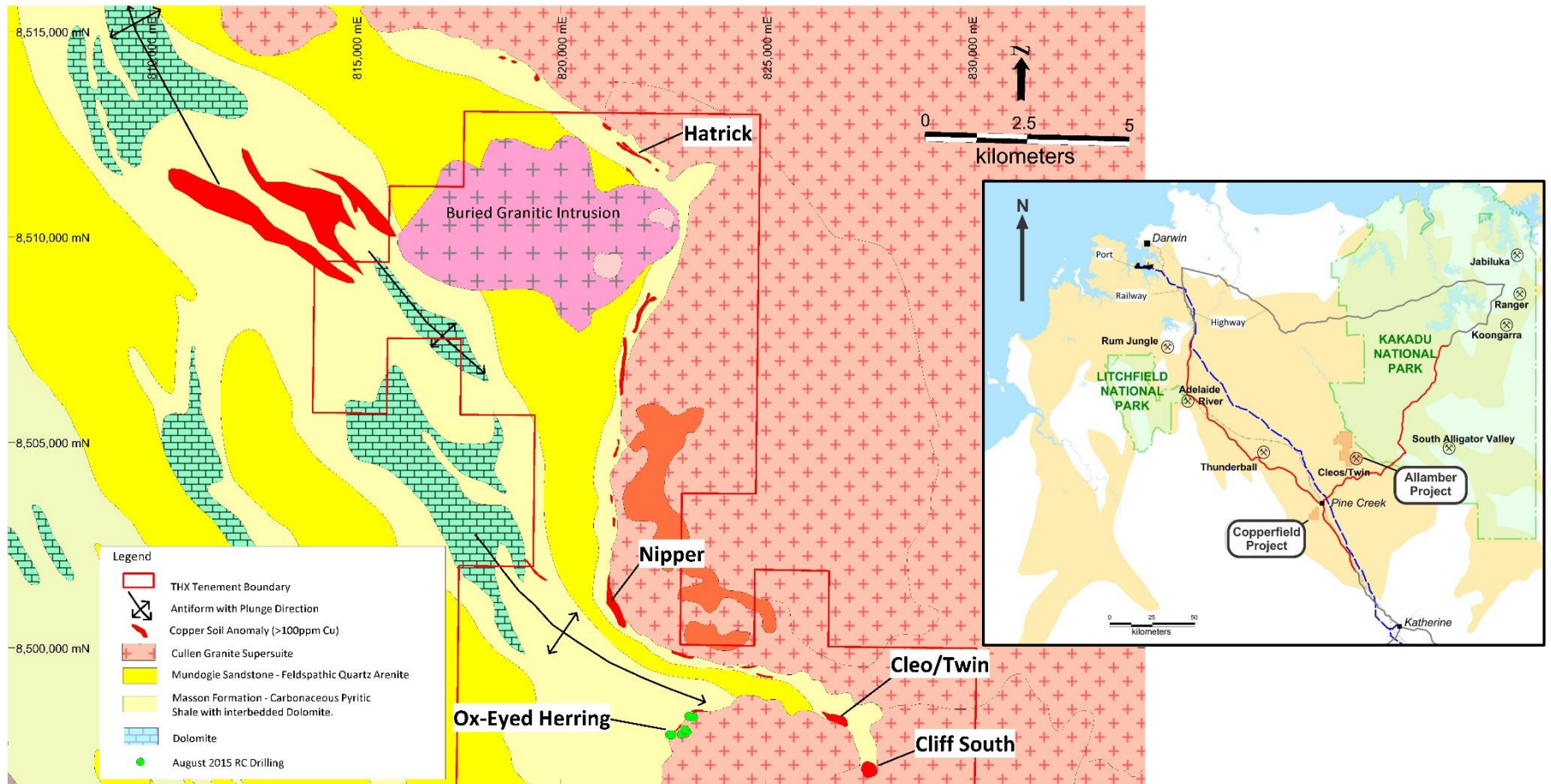
Red Bore setting adjacent to DeGrussa



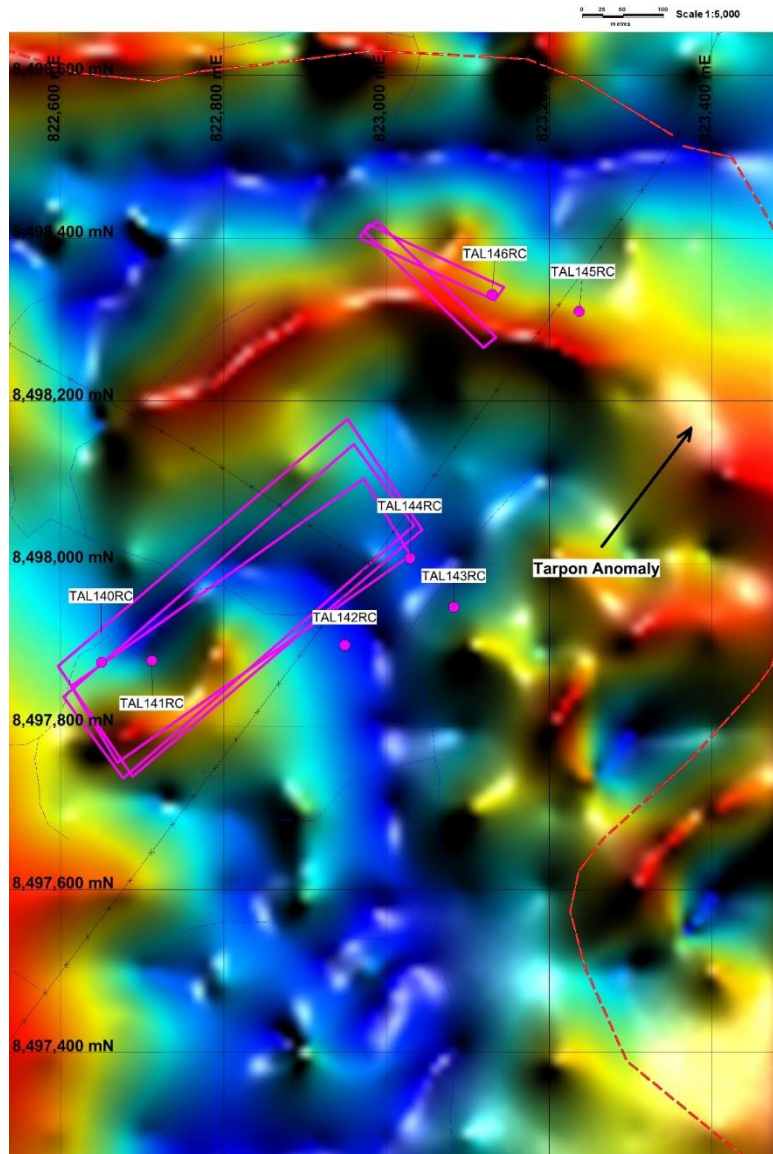
Red Bore: most recent drilling (Jul – Aug 2016)



Allamber, NT: copper, graphite, uranium



Allamber, NT: copper, graphite, uranium



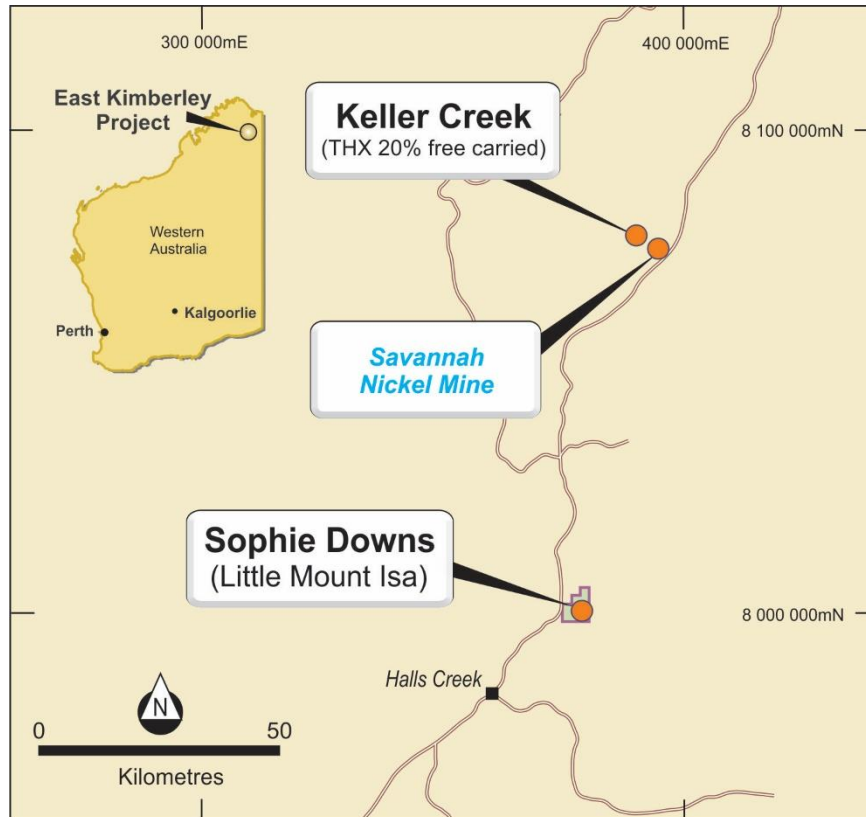
Ox-Eyed Herring / Tarpon Prospects

- Fixed Loop EM conductors shown on ground gravity image
- Follow-up drill testing in 2016
- ASX release 24 Sep 2015:
13m at 0.9% Cu from 175m
inc 6m at 1.6% Cu, 20 gpt Ag from 182m
- ASX release 03 Feb 2015:
8m at 2.7% Cu from 112m
inc 5m at 4.2% Cu from 113m

Graphite (ASX release 10 Oct 2012)

- Hatrick: 36m at 7.23% TGC
- Cliff South: 28m at 8.74% TGC

East Kimberley, WA: zinc, graphite, nickel



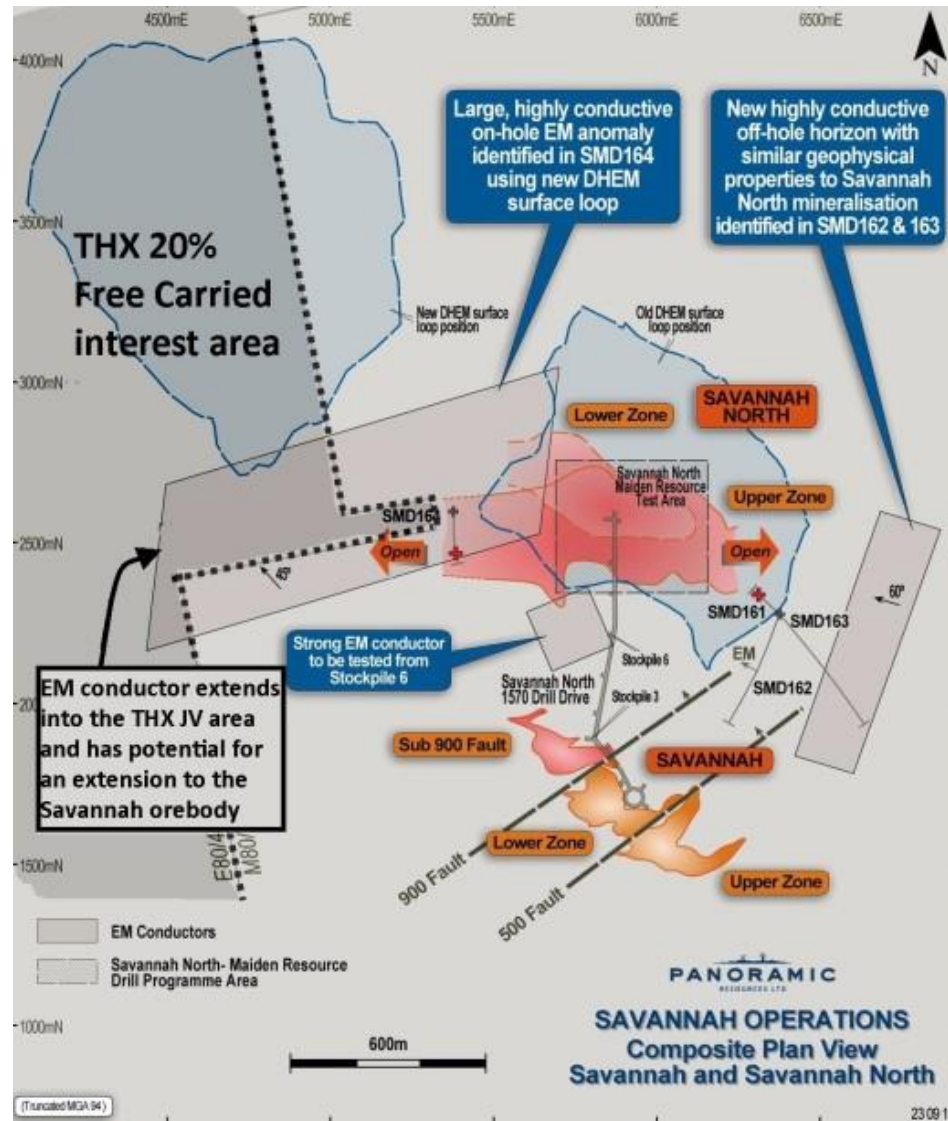
Sophie Downs

- Little Mount Isa, Ilmars prospects
- Zinc intercepts at LMI
- Graphitic schists common
- Halls Creek Fault Zone

Keller Creek (THX 20% fci)

- Abuts PAN's Savannah nickel mine
- Free carried to decision to mine
- Hosts Savannah North extensions
- Market attributes little to no value

Keller Creek: 20% fci in nickel extensions



Panoramic Resources (26 Aug 2015):

- ***25.95m at 2.55% Ni; 1.49% Cu and 0.17% Co in Lower Zone of Savannah North***
- ***EM data suggests total strike extent of mineralised horizon is approximately 2 kms***
- ***Extends to the west, into Keller Creek tenement in which THX has a 20% free carried interest***

Disclaimer

This presentation has been prepared by Thundelarra Ltd (“Thundelarra”) and contains background information about Thundelarra and its related entities current at the date of this presentation. The presentation is in summary form and does not purport to be complete or all-inclusive. It is for information purposes only. The material herein does not constitute an invitation, solicitation, recommendation or an offer to purchase or subscribe for securities in any jurisdiction. Recipients should conduct their own investigations and their own analysis to satisfy themselves as to the accuracy, completeness and relevance of the information, statements and opinions contained in this presentation and should consult their own business, legal and/or financial advisers when making any investment decision or any decision to purchase any securities in Thundelarra.

Thundelarra makes no representation or warranty, express or implied as to the accuracy, adequacy or completeness of any of the information in this presentation. To the fullest extent permissible by law, Thundelarra Ltd, its officers, employees, agents and advisers expressly disclaim liability for any loss or damage which may be suffered by any person through the use or reliance on anything contained in or omitted from this presentation. Certain information in this presentation refers to the intentions of Thundelarra, but these are not intended to be forecasts, forward-looking statements, or statements about future matters for the purposes of the Corporations Act or any other applicable law. The occurrence of events in the future are subject to risks, uncertainties and other factors that may cause Thundelarra’s actual results, performance or achievements to differ from those referred to in this presentation. Thundelarra, its officers, its employees, its agents and its advisers do not give any assurance or guarantee that actual results and events will not differ from Thundelarra's expectations.

Competent Person Statement

The details contained in this report that pertain to Exploration Results, Mineral Resources or Ore Reserves, are based upon, and fairly represent, information and supporting documentation compiled by Mr Costica Vieru, a Member of the Australian Institute of Geoscientists and a full-time employee of the Company. Mr Vieru has sufficient experience which is relevant to the style(s) of mineralisation and type(s) of deposit under consideration and to the activity which he is undertaking to qualify as a Competent Person as defined in the 2012 edition of the “Australasian Code for Reporting of Exploration Results, Mineral Resources and Ore Reserves” (JORC Code 2012).

The information in this presentation that relates to exploration data disclosed under the JORC Code 2012 was reported in full in various ASX announcements released in 2014; 2015; 29 March; 26 April; 6, 7, 13, 14 September; 3 November; 9, 16, 19 December 2016; 19 January; 08, 13, 24 February; and 02 March 2017. No information has materially changed since it was last announced. Additional exploration data from the Allamber project were prepared and first disclosed under the JORC Code 2004. Any such data / results presented herein but not updated to comply with the JORC Code 2012 are because the information has not materially changed since it was originally reported.

Mr Vieru consents to the inclusion in this report of the matters based upon the information in the form and context in which it appears.



Contact Details

Registered Office

Suite 8, Level 1
186 Hampden Road
NEDLANDS WA 6009

Telephone:

Facsimile:

Email:

Website:

PO Box 7363
Cloisters Square
PERTH WA 6850

+618 9389 6927

+618 9389 5593

info@thundelarra.com.au

www.thundelarra.com

Listed on the Australian Stock Exchange: Code

THX

For further information contact:

Tony Lofthouse – Chief Executive Officer

tony.lofthouse@thundelarra.com.au