



Investor Presentation

Nov 2016

www.zeldatherapeutics.com

Disclaimer and Important Notice



Disclaimer

This presentation has been prepared by Zelda Therapeutics Pty Ltd ACN 607 538 876 ("Company"). It does not purport to contain all the information that a prospective investor may require in connection with any potential investment in the Company. You should not treat the contents of this presentation, or any information provided in connection with it, as financial advice, financial product advice or advice relating to legal, taxation or investment matters.

No representation or warranty (whether express or implied) is made by the Company or any of its officers, advisers, agents or employees as to the accuracy, completeness or reasonableness of the information, statements, opinions or matters (express or implied) arising out of, contained in or derived from this presentation or provided in connection with it, or any omission from this presentation, nor as to the attainability of any estimates, forecasts or projections set out in this presentation.

The photos/pictures used in this presentation are for illustrative purposes only.

This presentation is provided expressly on the basis that you will carry out your own independent inquiries into the matters contained in the presentation and make your own independent decisions about the affairs, financial position or prospects of the Company. The Company reserves the right to update, amend or supplement the information at any time in its absolute discretion (without incurring any obligation to do so).

Neither the Company, nor its related bodies corporate, officers, their advisers, agents and employees accept any responsibility or liability to you or to any other person or entity arising out of this presentation including pursuant to the general law (whether for negligence, under statute or otherwise), or under the Australian Securities and Investments Commission Act 2001, Corporations Act 2001, Competition and Consumer Act 2010 or any corresponding provision of any Australian state or territory legislation (or the law of any similar legislation in any other jurisdiction), or similar provision under any applicable law. Any such responsibility or liability is, to the maximum extent permitted by law, expressly disclaimed and excluded.

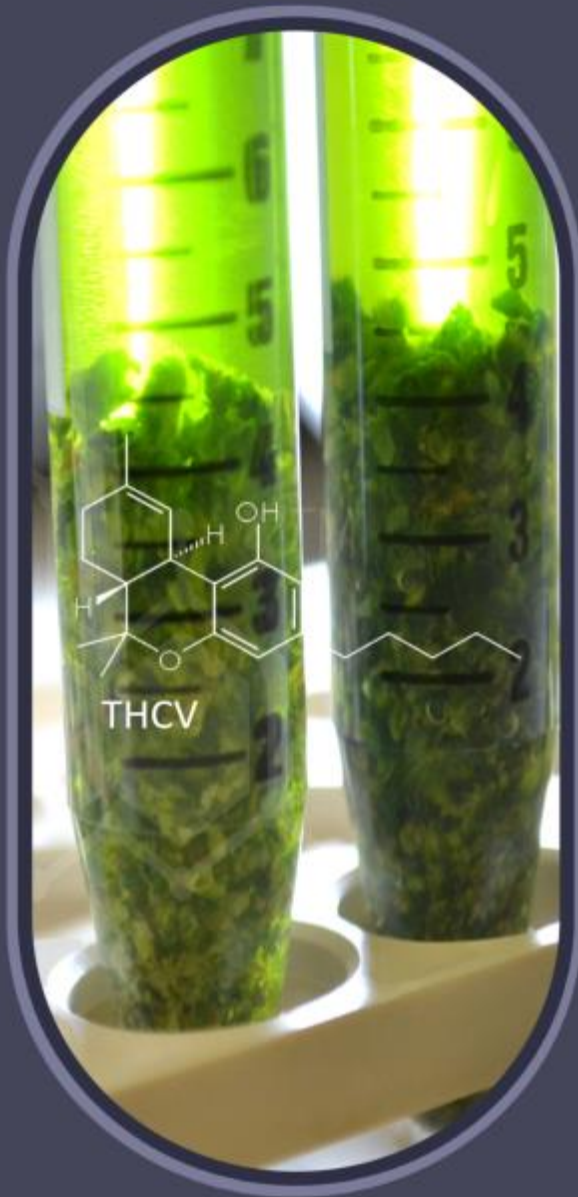
Nothing in this material should be construed as either an offer to sell or a solicitation of an offer to buy or sell securities. It does not include all available information and should not be used in isolation as a basis to invest in the Company.

Future matters

This presentation contains reference to certain intentions, expectations, future plans, strategy and prospects of the Company.

Those intentions, expectations, future plans, strategy and prospects may or may not be achieved. They are based on certain assumptions, which may not be met or on which views may differ and may be affected by known and unknown risks. The performance and operations of the Company may be influenced by a number of factors, many of which are outside the control of the Company. No representation or warranty, express or implied, is made by the Company, or any of its directors, officers, employees, advisers or agents that any intentions, expectations or plans will be achieved either totally or partially or that any particular rate of return will be achieved.

Given the risks and uncertainties that may cause the Company's actual future results, performance or achievements to be materially different from those expected, planned or intended, recipients should not place undue reliance on these intentions, expectations, future plans, strategy and prospects. The Company does not warrant or represent that the actual results, performance or achievements will be as expected, planned or intended.



Zelda Therapeutics (“Zelda’s”) is a private Californian-founded biotechnology company focused on medical cannabis therapies with a strong Australian connection

- Targeting clinical efficacy trials at leading clinical research organisations
- Leveraging an existing data set of human data gathered over 5 years and licensed exclusively from Aunt Zelda’s in California, a pioneer in medical cannabis
- This exclusive patient data enables our proprietary cannabis medicines to be taken straight into clinical trials
- Formulations are targeting a range of disorders including insomnia, dermatological conditions and cancer



Overview

Relisted on ASX Nov 2016 ASX: ZLD

Top 20 shareholders own 60% of the stock (50% of the shares are escrowed)

Issued 160m shares @ 2.5c to raise \$4m

Market Capitalization - \$16.7m (@2.5c)

Shares on issue – 670m

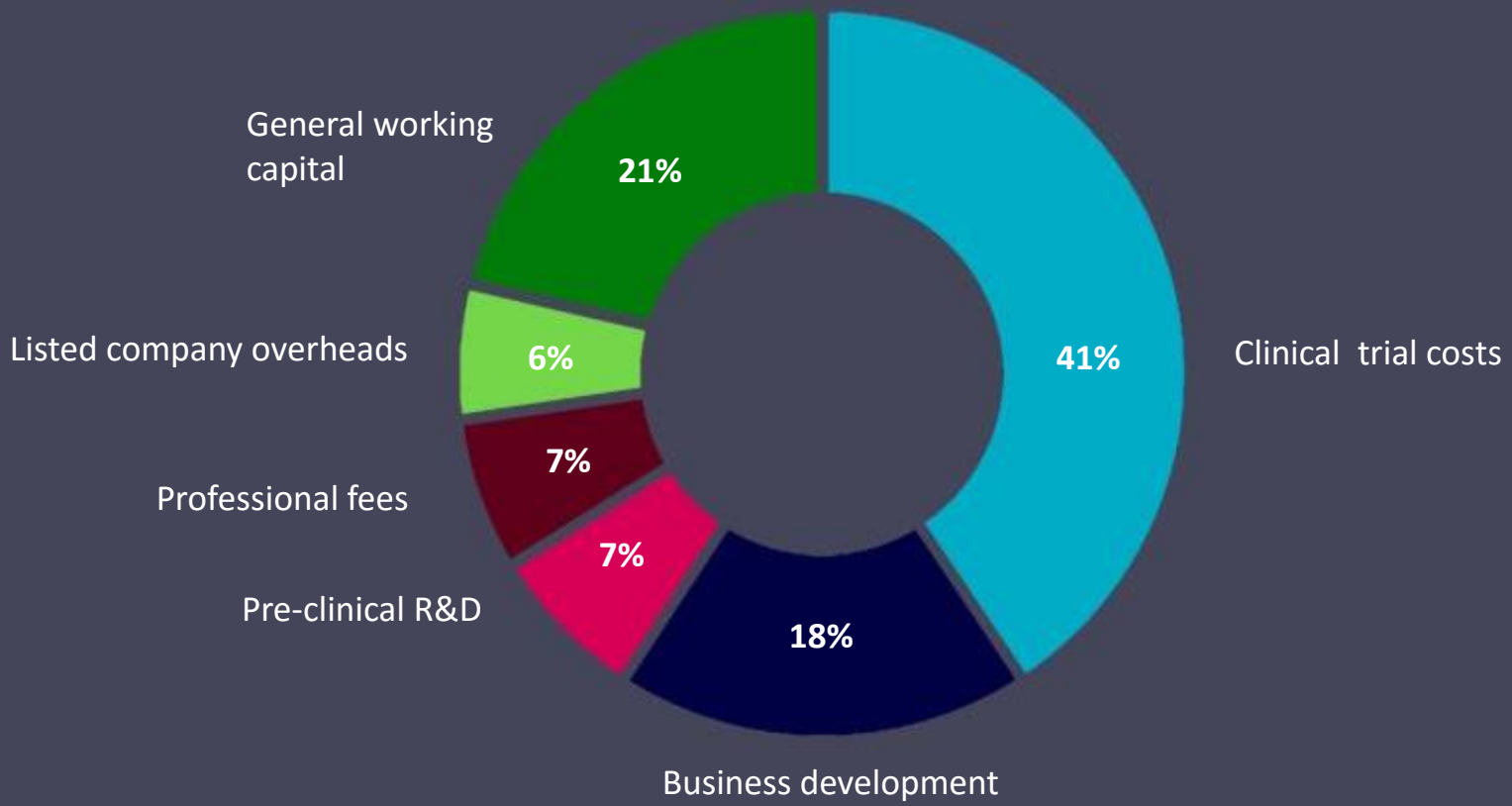
Options on issue – 40m

Cash at bank approx. AUD \$4m +

Strong shareholder support from medical community

Use of Funds

-  Fund research and pre-clinical trials in cancer
-  Fund business development to partner and license products
-  Fund planned clinical trials in Insomnia, cancer and dermatology indications



Board & Management Team



Harry Karelis
Founder & Executive Chairman

Harry is the founder of Titan Capital Partners and has in excess of 24 years diversified experience in the financial services sector including specialist med-tech private equity investing



Mara Gordon
Founder & Director

Mara is the co-founder of Aunt Zelda's and Zelda Therapeutics. She specialises in the development of cannabis extract treatment protocols for seriously ill patients in California



Jason Peterson
Founder & Director

Jason is a Director, major shareholder and Head of Corporate at boutique stock broking and investment banking firm, CPS Capital. He has more than 21 years of experience in the financial advisory sector



Dr Stewart Washer
Founder & Director

Stewart has 25 years of CEO and Board experience in medical technology, biotech and agrifood companies. He is currently Chairman of ASX-listed Orthocell Ltd, Cynata Therapeutics Ltd and Chairman of Minomic International Ltd

World-leading Scientific Advisory Board



Professor Manuel Guzmán

Full Professor of Biochemistry and Molecular Biology at Madrid's Complutense University and expert on the molecular mechanisms of action and role of cannabinoids in controlling cell generation and death



Dr Cristina Sánchez

Assistant Professor at Complutense University, Madrid Spain. Specialist in the area of lipid signaling, including cannabinoids in an oncology setting



Dr Joe Goldstrich

Distinguished clinical career in preventive cardiology and nutrition spanning over 40 years. He has evaluated over 3,500 patients in the US using cannabis as a fundamental medicine in the management of a variety of medical conditions



Dr Noah Federman

Highly respected paediatric clinical and research oncologist. Currently, Director of the Paediatric Bone and Soft Tissue Sarcoma Program at University of California, part of the prestigious UCLA Sarcoma Program and UCLA's Jonsson Comprehensive Cancer Centre

How Does Medical Cannabis Work?

Cannabis contains more than 85 types of cannabinoids, the chemical compounds secreted by cannabis flowers

Cannabinoids bind to receptors in the brain and body, mimicking naturally occurring endocannabinoids

Different medical effects can be achieved by targeting different receptors, using different types or quantities of cannabinoids

The natural endocannabinoid system occurs throughout the body

Kief (resinous hair-like structures) contain high concentrations of cannabinoids



Δ 9-tetrahydrocannabinol (THC)

Cannabidiol (CBD)

Around 100 unique cannabinoids

Key medical cannabinoids are:



Tetrahydrocannabinol

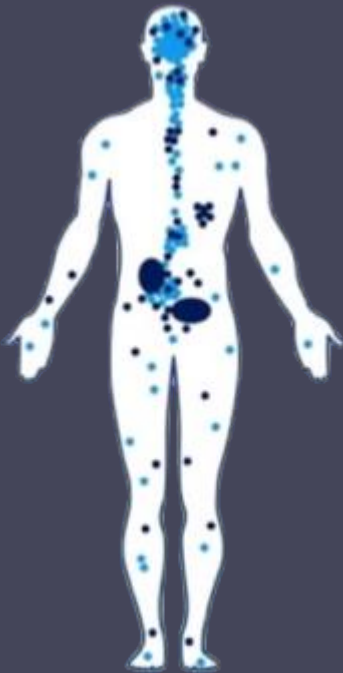
CB1

CB2



Cannabidiol, Cannabinol, Others

Other targets



Structural Drivers of Rapid Change

Medical cannabis is becoming recognised worldwide as a natural and effective medicine to treat a growing number of diseases and conditions

Evidence based shift, driven by patients and high profile medical figures

MEIDCAL

- Compelling clinical evidence coming from Spain, Italy, Israel, Belgium, Canada
- Large volume of clinical quality anecdotal patient evidence mainly from USA

REGULATORY

- Use is regulated in Canada, Czech Republic
- Australian TGA rescheduled cannabis medicines allowing doctors to prescribe
- US looking at rescheduling

LEGAL

- Austria, France, Israel, Italy and Netherlands are leading the way
- Followed by the USA, Canada, Czech Republic, North Korea, Spain, Uruguay & Chile
- Australian legislation passed in Feb 2016 to grow and manufacture

CONSUMER

- Changing consumer perceptions to accept medicinal cannabis
- Potential medical solutions for a number of important diseases including chronic pain, insomnia and cancer
- Consumer demand for botanical medicines

Whole Spectrum Extracts More Effective

10



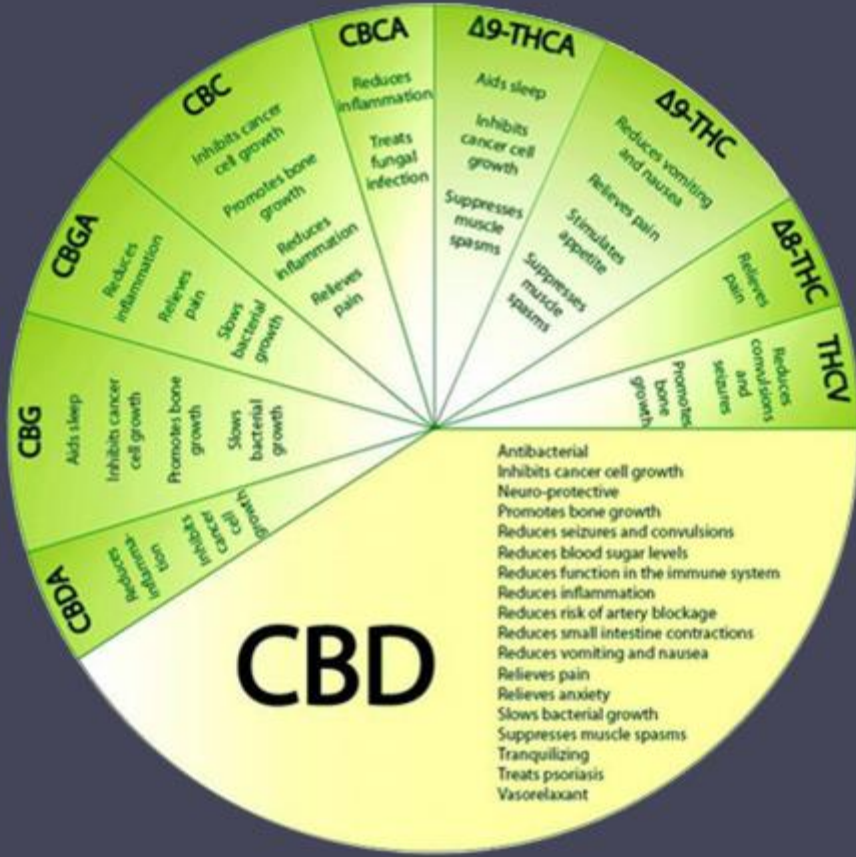
Whole spectrum cannabis extracts include most of the natural cannabinoids and active compounds from the plant

Chemically synthesized cannabis medicines and single compounds have been shown to be less effective and have been available for many years

Zelda's whole spectrum medicines contain a proprietary ratio of cannabinoids and terpenes extracted from specific cannabis plants to treat a range of diseases

Broad Medical Opportunity

A broad range of medical indications have been shown to be alleviated by medical cannabis



Key indications for use of medical cannabis:

Known Uses

- Spasticity in Multiple Sclerosis
- Post Traumatic Stress Disorder
- Chronic neuropathic pain
- Epilepsy / Seizures



New Uses

- Dermatology
- Insomnia
- Cancer

The beneficial therapeutic effects of cannabis derived medicines result from the interaction of different cannabinoids, hence Zelda’s medicines consist of cannabinoids in different ratios. It also appears that other components within the plant may also play a useful role



Cultivation and Production

12



- The selection and cultivation of medical cannabis is undertaken under stringent controls to ensure the quality is clinical grade quality and cannabinoid content is consistent
- Zelda's will obtain its source material and medicinal extracts through its partnership with AusCann
- AusCann is an Australian company that is backed by the massive international medical cannabis grower, Canopy Growth Corporation. AusCann is setting up to grow in Australia beyond Canopy's existing operations in Canada
- AusCann will grow and manufacture cannabis medicines for Zelda under the internationally recognised medical quality system called "Good Manufacturing Practice". This allows these products to be used in international clinical trials and to be sold as registered medicines in the future
- It is anticipated AusCann (subject to being granted an appropriate licence) will start production in Australia in 2017

Leadership Position Through Aunt Zelda's

13



Time/Cost Advantage via partnership - straight to clinical trials



Aunt Zelda's
ALLEVIATING PATIENT SUFFERING THROUGH MEDICINAL CANNABIS

About Aunt Zelda's

- A pioneering California-based group supplying customized medical extracts to registered patients
- Founded by high profile sector figure in the USA and worldwide, Mara Gordon (also founder of Zelda Therapeutics)
- Extensive clinical quality patient data gathered over 5 years from hundreds of patients treated with medicinal cannabis



Exclusive access to patient data, protocols and formulations from Aunt Zelda's extensive database



Links into network in US as leading existing medicinal cannabis producer



Aunt Zelda's will receive clinical milestone and sales royalties from Zelda Therapeutics

Case Study – Chico Ryder

14



During Treatment



After Treatment

- 11 Year old child diagnosed with rhabdomyosarcoma in 2012
- Doctors said surgery was too risky and he would need chemotherapy and radiation
- Doctors prescribed Marinol, to help with the side effects of the chemo and radiation treatments
- The Marinol helped a little, but his parents turned to Aunt Zelda's to provide natural cannabis oil, rather than the synthetic form in Marinol
- Treated with Aunt Zelda's medicine
- Last December (2015) doctors diagnosed, Chico was in remission
- Zelda's cannabis medicine reduced the nausea and may have worked alongside the chemotherapy to reduce the cancer

Source: <http://www.dailymail.co.uk/health/article-2727774/Happy-Mondays-star-former-drug-addict-Paul-Ryder-reveals-treated-11-year-old-sons-cancer-CANNABIS.html#ixzz4QY87Ky5O>

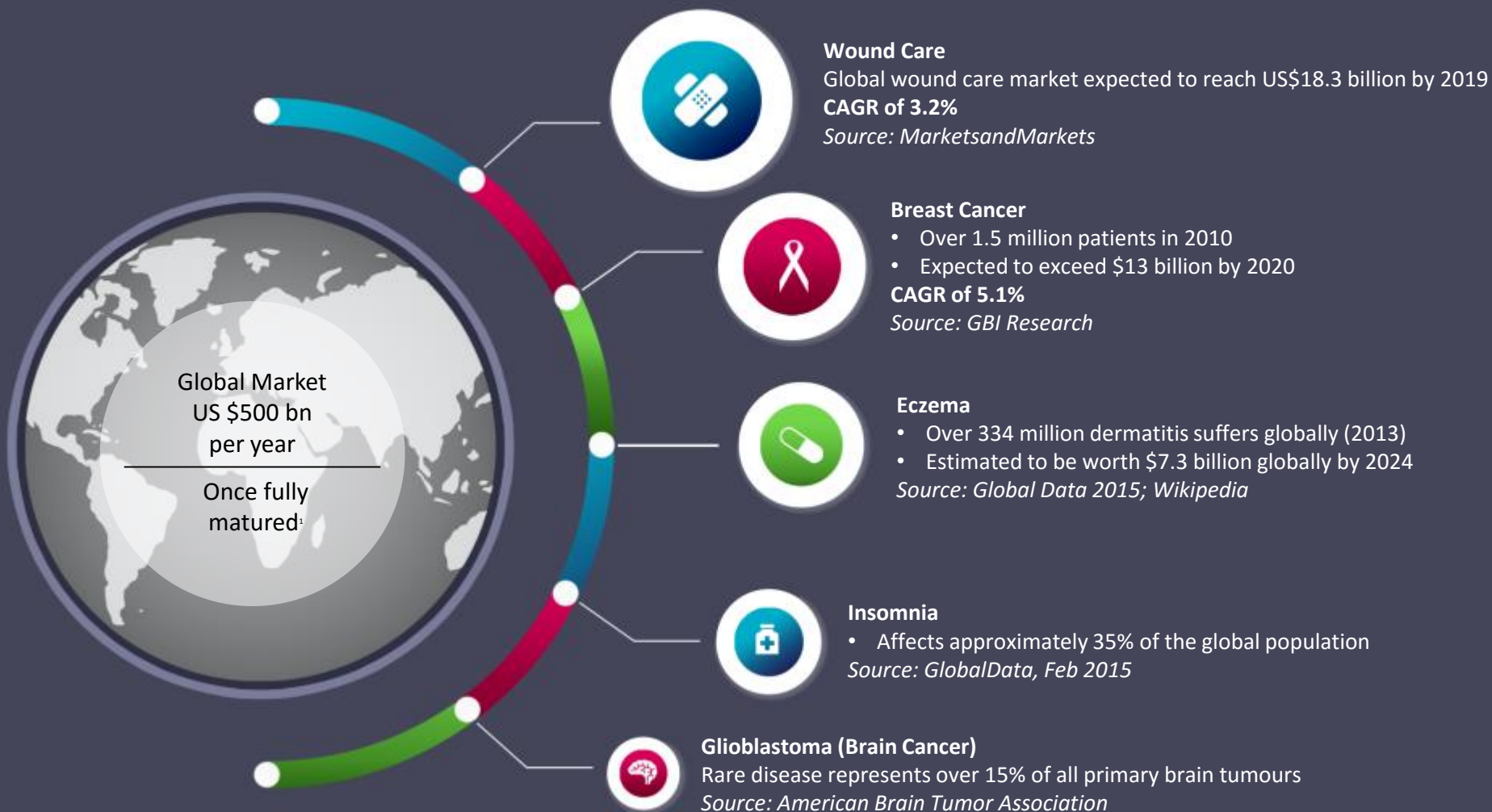


Strategic focus on the development of treatments for skin conditions, cancer and insomnia

Relatively low cost, short duration trials in high value niche indications for max value

Pipeline:

- Insomnia clinical trials planned for 2017
- Dermatology trials in design including Eczema
- Pre-clinical Breast Cancer research is underway
- Pre-clinical research program design for other types of cancer are underway



¹<http://www.smh.com.au/business/medical-marijuana-poised-to-become-boom-local-industry-20150610-ghkozx.html>

Highly Defensive Products



- FDA guarantees seven years of market exclusivity for specific formulations of various cannabinoids or their derivatives for treatment of rare diseases¹.
- Zelda has patents pending over formulations and uses of medicinal cannabis
- Zelda Therapeutics will also own the clinical trial data generated
- Topical formulations will be protected by a combination of patents and trade secrets

¹ Source: <https://www.nap.edu/read/6376/chapter/7?term=seven+years+exclusivity#197>

Working with world leaders in cannabis medicine



Exclusive patient data access agreement in place with *Aunt Zelda's* includes formulations & protocols



Manufacturing agreement in place with *AusCann*, an Australian company working with Canopy Growth/Tweed, Canada's largest medical cannabis company, to supply clinical trial material



Exclusive access to *CDRMed* for clinical trial use, software that creates the best formulations of medicinal cannabis based on the Aunt Zelda's database



Partnership in place with the prestigious *Complutense University Madrid* for pre-clinical research in cancer

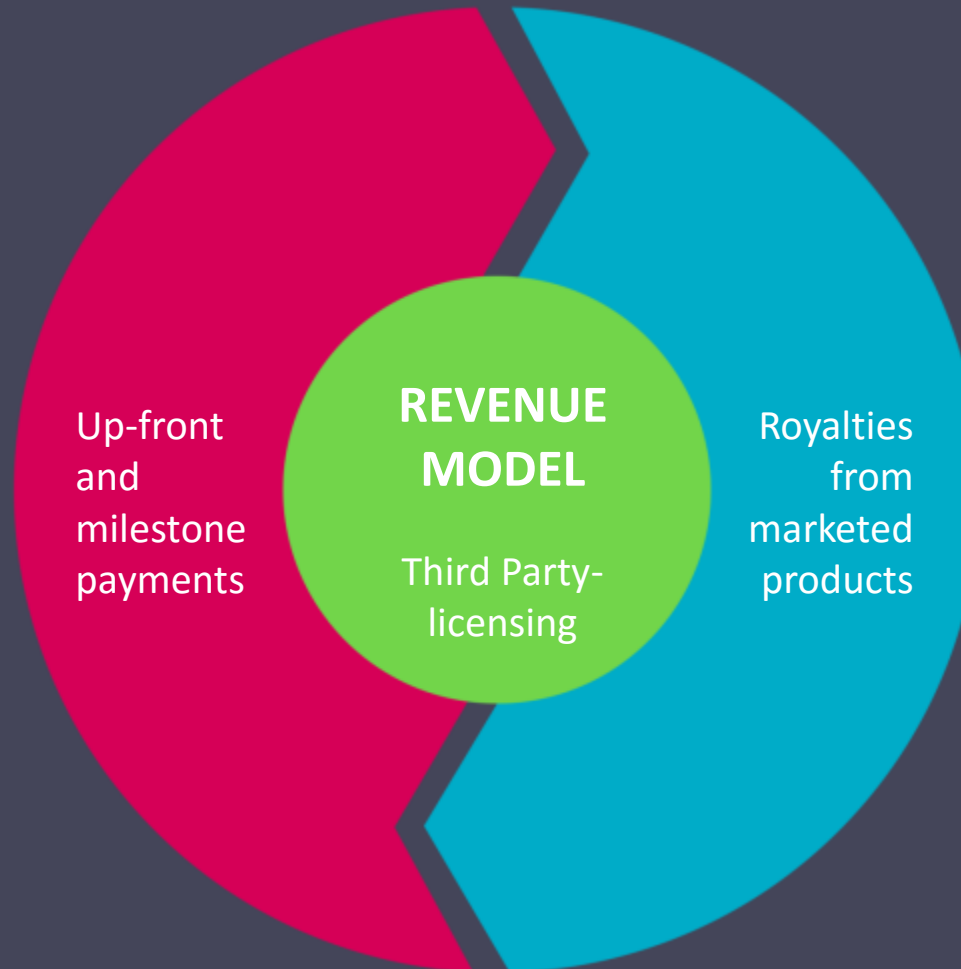
Discussions with potential Clinical Research Organizations to run phase 2 trials in Australia and Canada



Conduct studies with key research institutions and specialist clinical research organisations (CROs)



Design key pre-clinical and clinical studies in-house



Third party-licensing or partner with leading pharma/biotech for phase 3 or marketing

Competitive Landscape

Company	Lead Product/s	Marketed/Trial status	Existing patient data	Multiple Indications	Multiple Formulations
Zelda Therapeutics (US \$13m market cap)	Dermatology Insomnia Cancer	Clinical trial ready	✓	✓	✓
GW Pharmaceuticals (LSE:GWP) (US \$3bn market cap)	Sativex (MS spasticity) Epidiolex (childhood epilepsy)	Marketed	✓	✓	✓
PharmaCyte Biotech, Inc. (OTCQB:PMCB) (US \$34m market cap)	Pancreatic cancer treatment	Performing Phase 2b	✗	✗	✗
Canopy Growth Corporation (TSE:CGC) (USD \$1.4bn market cap)	Chronic pain and others. Large grower.	Several clinical trials in progress	✓	✓	✓



- Initial data from pre-clinical research in human breast cancer via Complutense University Madrid
- Pre-clinical research in other cancers
- Clinical trials
 - Insomnia
 - Eczema
 - Others to be announced 2017
- Commencement of observational trials in brain cancer
 - Glioblastoma (adult and paediatric)



Diverse worldwide
opportunity opening up



Acceleration to efficacy
clinical trials, through
Aunt Zelda's patient data



Focus on large and
growing dermatology,
insomnia and cancer
patient populations



Clear strategy to out-
license at end of phase 2
with significant uplift in
shareholder value



Attractive growth
potential through big
data partnership with
CDRMed and other
potential partners



Industry recognised
Board & management
team and partnerships
with leading medical
cannabis firms



Active news flow pipeline
with multiple near term
share price catalysts

