





























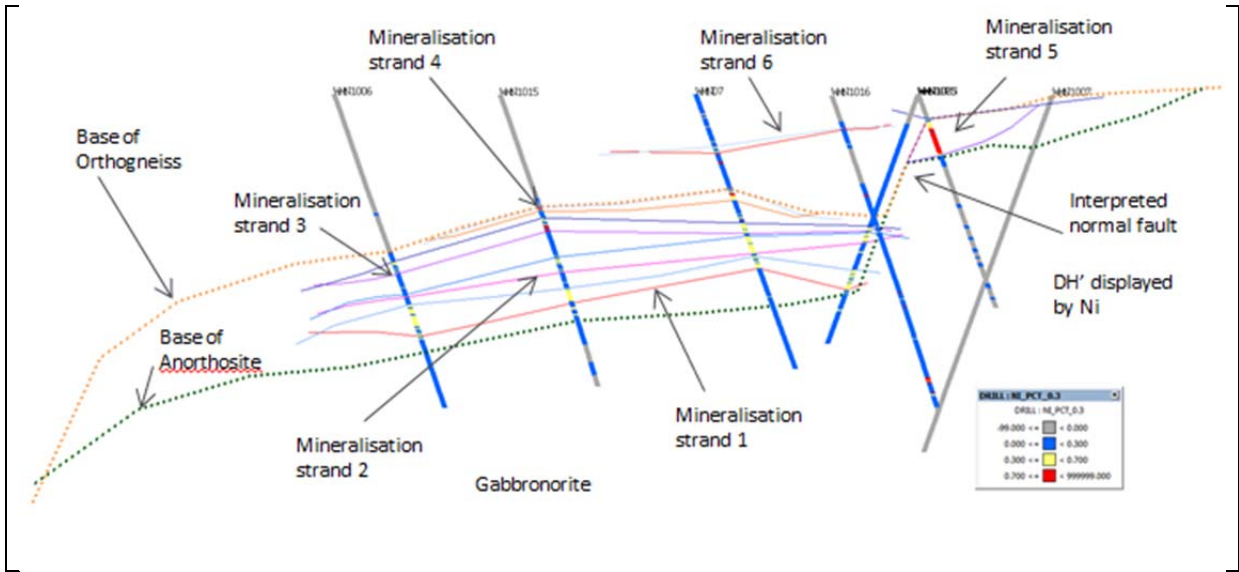




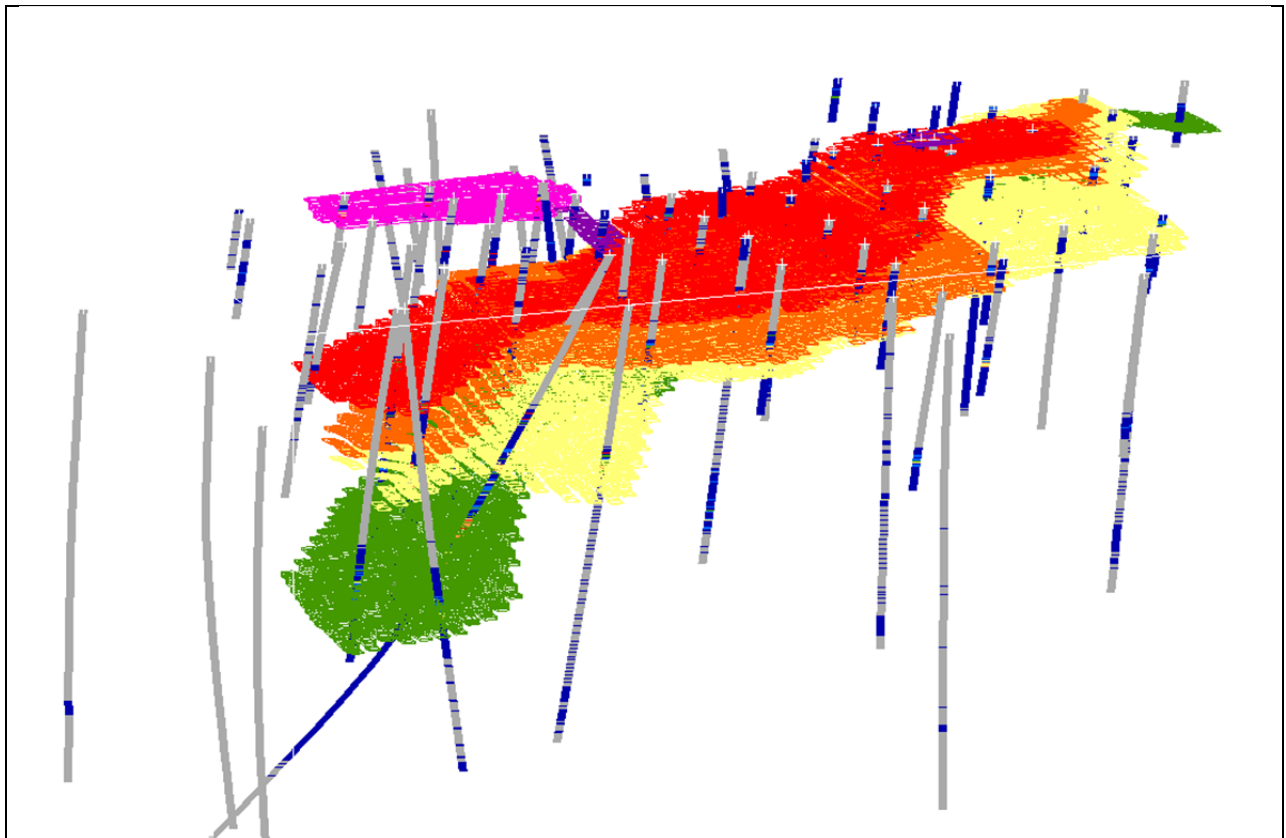
	<ul style="list-style-type: none"> <li>• The bulk density for bulk material must have been measured by methods that adequately account for void spaces (vugs, porosity, etc), moisture and differences between rock and alteration zones within the deposit.</li> <li>• Discuss assumptions for bulk density estimates used in the evaluation process of the different materials.</li> </ul>	<ul style="list-style-type: none"> <li>• Methods are assumed to have been appropriate.</li> </ul>
<b>Classification</b>	<ul style="list-style-type: none"> <li>• The basis for the classification of the Mineral Resources into varying confidence categories.</li> <li>• Whether appropriate account has been taken of all relevant factors (ie relative confidence in tonnage/grade estimations, reliability of input data, confidence in continuity of geology and metal values, quality, quantity and distribution of the data).</li> <li>• Whether the result appropriately reflects the Competent Person's view of the deposit.</li> </ul>	<ul style="list-style-type: none"> <li>• The Mineral Resource Estimate was originally conducted in accordance with the Australasian Code for the Reporting of Identified Mineral Resources and Ore Reserves (JORC Code, 2004). The Estimate has been classified as Inferred based upon the drill hole spacing, sampling intervals, geological interpretation, kriging performance and representativeness of all available assay data.</li> <li>• The Mineral Resource Estimate appropriately reflects the view of the Competent Person.</li> </ul>
<b>Audits or reviews</b>	<ul style="list-style-type: none"> <li>• The results of any audits or reviews of Mineral Resource estimates.</li> </ul>	<ul style="list-style-type: none"> <li>• Cassini has not conducted an external audit of the resource and is continuing to review the resource Estimate.</li> </ul>
<b>Discussion of relative accuracy/ confidence</b>	<ul style="list-style-type: none"> <li>• Where appropriate a statement of the relative accuracy and confidence level in the Mineral Resource estimate using an approach or procedure deemed appropriate by the Competent Person. For example, the application of statistical or geostatistical procedures to quantify the relative accuracy of the resource within stated confidence limits, or, if such an approach is not deemed appropriate, a qualitative discussion of the factors that could affect the relative accuracy and confidence of the estimate.</li> <li>• The statement should specify whether it relates to global or local estimates, and, if local, state the relevant tonnages, which should be relevant to technical and economic evaluation. Documentation should include assumptions made and the procedures used.</li> <li>• These statements of relative accuracy and confidence of the estimate should be compared with production data, where available.</li> </ul>	<ul style="list-style-type: none"> <li>• The relative accuracy of the Mineral Resource estimate is reflected in the reporting of the Mineral Resource as per the guidelines of the 2012 JORC Code.</li> <li>• The Mineral Resource statement relates to global estimates of tonnes and grade.</li> <li>• The deposit is not currently being mined.</li> </ul>



Geological cross section - section 368900 mE



Overview of mineralisation strands – looking NE



DH's displayed by Ni

Blocks displayed by mineralisation coding