



GENERAL MANAGER APPOINTED FOR THE CENTRAL TANAMI PROJECT JOINT VENTURE

Perth, Australia, 19 October 2021: Tanami Gold NL (ASX:TAM) (“Tanami Gold” or “the Company”) is pleased to advise that Mr Joe McDiarmid has been appointed as General Manager of the Central Tanami Project Joint Venture (“CTPJV”) by the CTPJV Management Committee.

Mr McDiarmid is a consultant mining engineer and manager with experience in executive, management, operational, technical and leadership roles in resource companies globally over more than 20 years. His recent experience managing international technical teams covering open pit and underground studies, Ore Reserves and due diligence work, coupled with experience in starting successful operations has given Mr McDiarmid exposure to a variety of mining methodologies plus a well-developed understanding of the commercial, functional and safety aspects of mining operations.

The Company also wishes to advise that following the distribution of a scope of work and drill tender to drilling contractors, a drilling contractor has been secured by the CTPJV to complete a diamond core drill program at the Jims Gold Deposit. This initial program is designed to target the down-plunge extension of known mineralisation at Jims, with a view to providing pertinent information that will establish a platform from which future resource definition drilling campaigns in this area can rapidly advance. The drill rig is expected onsite during the coming month with the drilling program scheduled to be completed before the end of 2021.

The CTPJV is a 50/50 joint venture covering the Central Tanami Project in the northern Territory between Tanami Gold and ASX listed Northern Star Resources Limited (“Northern Star”). It was established to advance exploration on the 2,211km² tenement area held in the Tanami Region by the CTPJV. The tenement area encompasses highly prospective, underexplored geological sequences, in an area that is known to be well endowed with gold mineralisation. The objective of the CTPJV is to develop and mine the Groundrush Gold Deposit and any other Ore Reserves and Mineral Resources delineated in the CTPJV tenements at the earliest possible time, utilising the existing mining infrastructure already in place on the project area, commensurate with good mining practice.

Authorised for release to the ASX by Mr. Arthur Dew, Chairman

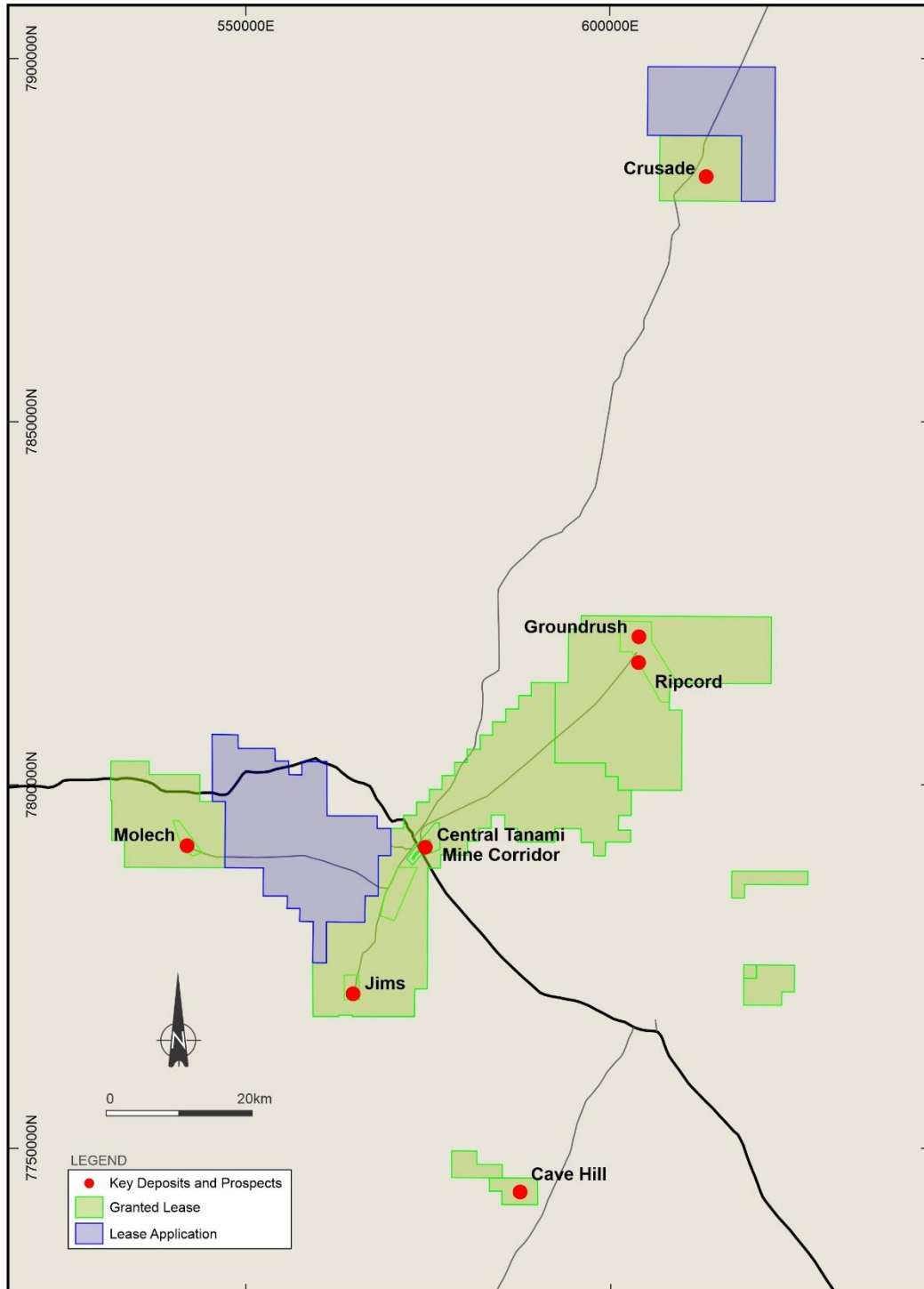


Figure 1 – Central Tanami Project Joint Venture Project Holding