



MEDICINAL CANNABIS: A GLOBAL GROWTH OPPORTUNITY

PROACTIVE INVESTORS
MAY 2019

ASX: ZLD

OTCQB: ZLDAF

WWW.ZELDATHERAPEUTICS.COM



DISCLAIMER & IMPORTANT NOTICE

Disclaimer

This presentation has been prepared by Zelda Therapeutics Ltd ACN 103 782 378 (“Company”). It does not purport to contain all the information that a prospective investor may require in connection with any potential investment in the Company. You should not treat the contents of this presentation, or any information provided in connection with it, as financial advice, financial product advice or advice relating to legal, taxation or investment matters.

No representation or warranty (whether express or implied) is made by the Company or any of its officers, advisers, agents or employees as to the accuracy, completeness or reasonableness of the information, statements, opinions or matters (express or implied) arising out of, contained in or derived from this presentation or provided in connection with it, or any omission from this presentation, nor as to the attainability of any estimates, forecasts or projections set out in this presentation.

This presentation is provided expressly on the basis that you will carry out your own independent inquiries into the matters contained in the presentation and make your own independent decisions about the affairs, financial position or prospects of the Company. The Company reserves the right to update, amend or supplement the information at any time in its absolute discretion (without incurring any obligation to do so).

Neither the Company, nor its related bodies corporate, officers, their advisers, agents and employees accept any responsibility or liability to you or to any other person or entity arising out of this presentation including pursuant to the general law (whether for negligence, under statute or otherwise), or under the Australian Securities and Investments Commission Act 2001, Corporations Act 2001, Competition and Consumer Act 2010 or any corresponding provision of any Australian state or territory legislation (or the law of any similar legislation in any other jurisdiction), or similar provision under any applicable law. Any such responsibility or liability is, to the maximum extent permitted by law, expressly disclaimed and excluded.

Nothing in this material should be construed as either an offer to sell or a solicitation of an offer to buy or sell securities. It does not include all available information and should not be used in isolation as a basis to invest in the Company.

Future matters

This presentation contains reference to certain intentions, expectations, future plans, strategy and prospects of the Company.

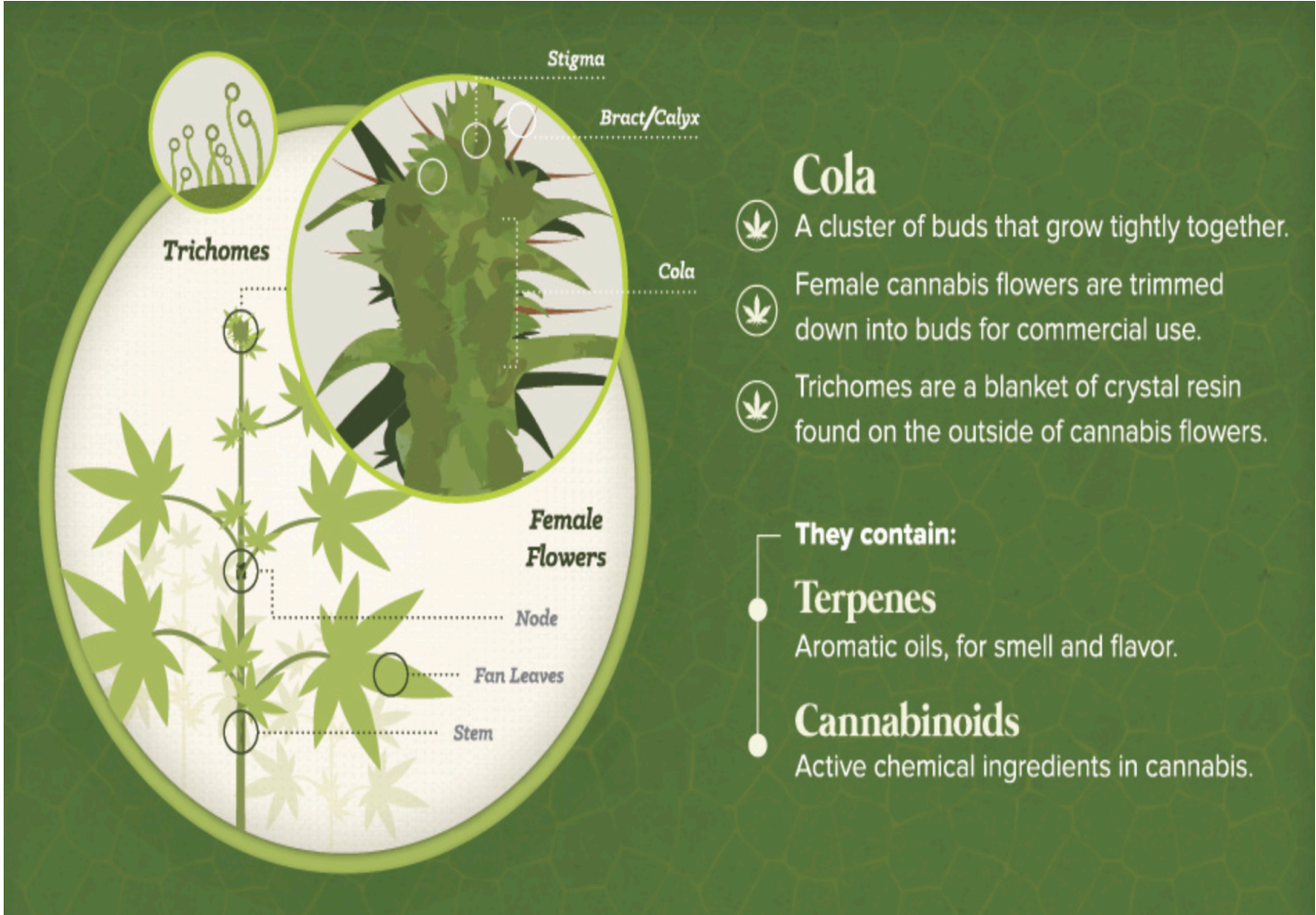
Those intentions, expectations, future plans, strategy and prospects may or may not be achieved. They are based on certain assumptions, which may not be met or on which views may differ and may be affected by known and unknown risks. The performance and operations of the Company may be influenced by a number of factors, many of which are outside the control of the Company. No representation or warranty, express or implied, is made by the Company, or any of its directors, officers, employees, advisers or agents that any intentions, expectations or plans will be achieved either totally or partially or that any particular rate of return will be achieved.

Given the risks and uncertainties that may cause the Company’s actual future results, performance or achievements to be materially different from those expected, planned or intended, recipients should not place undue reliance on these intentions, expectations, future plans, strategy and prospects. The Company does not warrant or represent that the actual results, performance or achievements will be as expected, planned or intended.



MEDICINAL CANNABIS: WHAT IS IT?

Cannabis Plant



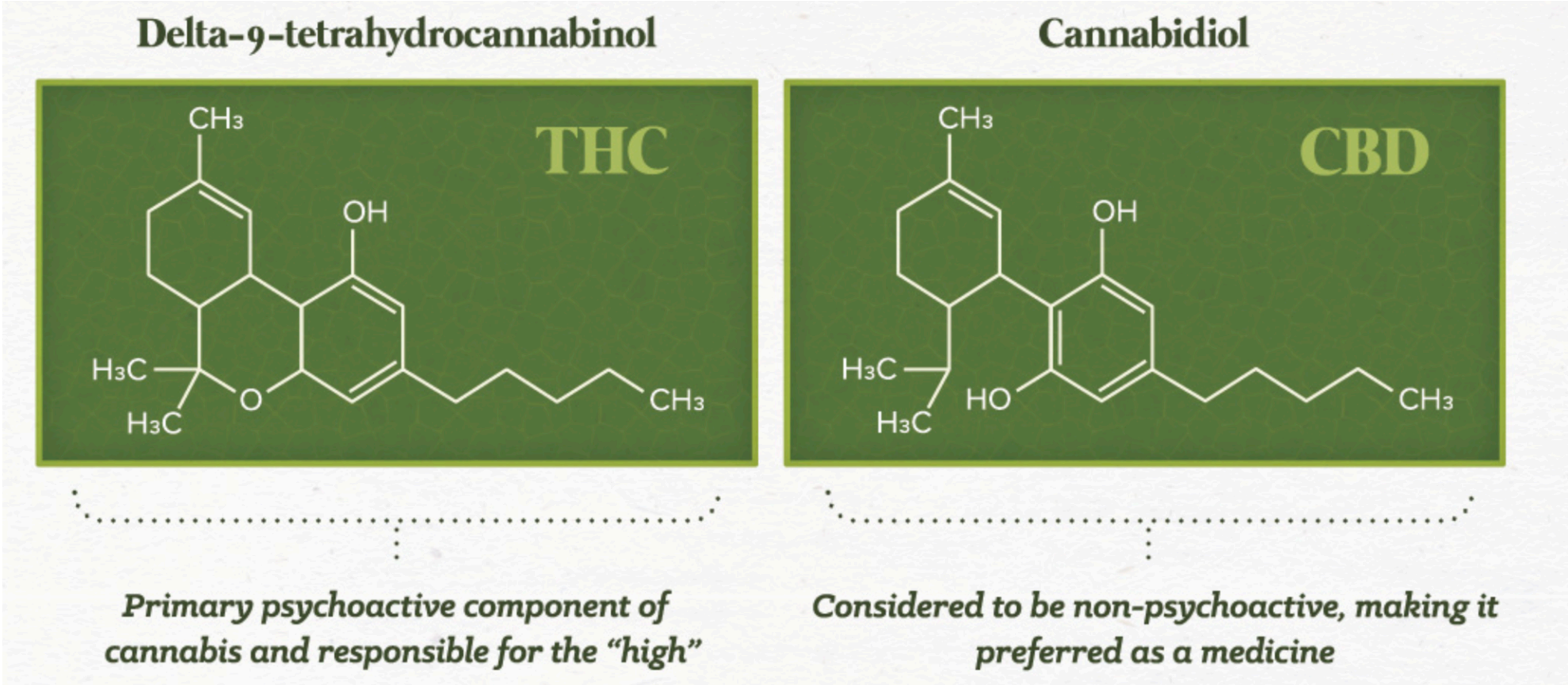
Dried Flower



Cannabis Oil



*The two most well-known cannabinoids are **THC** and **CBD**, which also occur in the largest volume.*



THC and CBD have been known to offer **relief for a range of conditions:**

They even have potential applications **for more complex diseases.**

- Nausea
- Inflammation
- Chronic pain
- Anxiety
- Seizures



- Cancer
- PTSD
- Crohn's disease
- Parkinson's disease
- Multiple Sclerosis

Source: Lift News, CanniMed

SOME KEY STATISTICS

Medicinal Cannabis legal in >34 countries & 35 US states

~1% of population in US/Canada registered to use medicinal cannabis

Medicinal cannabis market forecast to grow to \$40-55 billion by 2028 (18% CAGR)

~US\$20 billion raised by Medicinal Cannabis companies over last 4 yrs¹

21kg – Amount of cannabis required to consume for lethal dose



WHY ZELDA?

- EXPOSURE TO RAPIDLY EXPANDING GLOBAL INDUSTRY

- SINGULAR FOCUS ON CLINICAL VALIDATION TO ADDRESS KEY UNMET NEEDS

Building a portfolio of clinically-validated assets to treat pain, anxiety, sleep and cancer.

- RAPID PATH TO COMMERCIALISATION

Multiple revenue opportunities to license and generate milestone and royalty payments.

- INDUSTRY RECOGNISED BOARD/MANAGEMENT TEAM & ADVISORY TEAM

Seasoned executives & advisors with extensive research, pharma & capital markets track records.

- ATTRACTIVE VALUATION

Compared to other global medicinal cannabis companies.



RECENT HIGHLIGHTS

- LAUNCHED THREE FIRST IN CLASS CLINICAL TRIALS – RESULTS 2H 2019

- *Insomnia Trial (Sleep Centre, UWA).*
- *Observational Autism Trial (Children's Hospital of Philadelphia).*
- *Opioid Reduction Trial (St Vincent's Hospital, Melbourne).*

- EXPANDED PRECLINICAL PROGRAMME FOR CANCERS AND COGNITIVE DECLINE

- MANUFACTURE & GERMAN DISTRIBUTION AGREEMENT WITH HAPA MEDICAL BV

- PARTNERSHIP WITH US-BASED ILERA HEALTHCARE TO ACCESS > 110,000 PATIENTS

- PARTNERSHIP WITH SUDA TO DEVELOP PROPRIETARY ORAL MUCOSAL FORMULATIONS



COMMERCIALISATION STRATEGY



MEDICINAL CANNABIS: ACCELERATED PATH TO MARKET

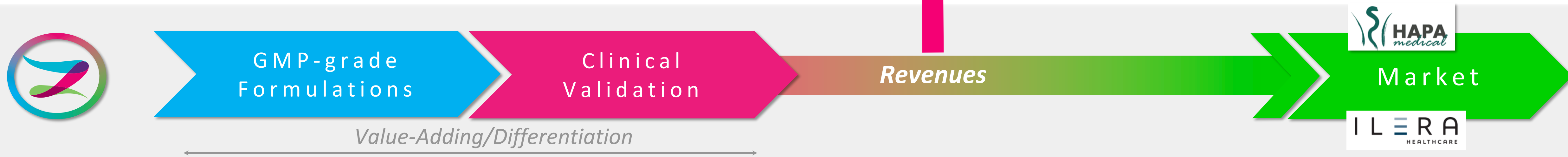
Conventional Drug Development Path

10 years to market - \$1 Billion Cost, Expensive Drugs



Emerging Market for Unregistered Cannabis Medicines

Prescription-based, legal, safe & affordable, rapid access to market



ADDRESSING UNMET NEEDS ACROSS ENTIRE VALUE CHAIN

Unmet Market Need



Limited data supporting therapeutic benefit of cannabis



Market Penetration



Product Differentiation



Clinical validation to support prescription

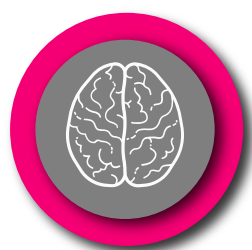
Zelda's Solution



Clinical Trials



Insomnia



Autism



Cancer



Pain

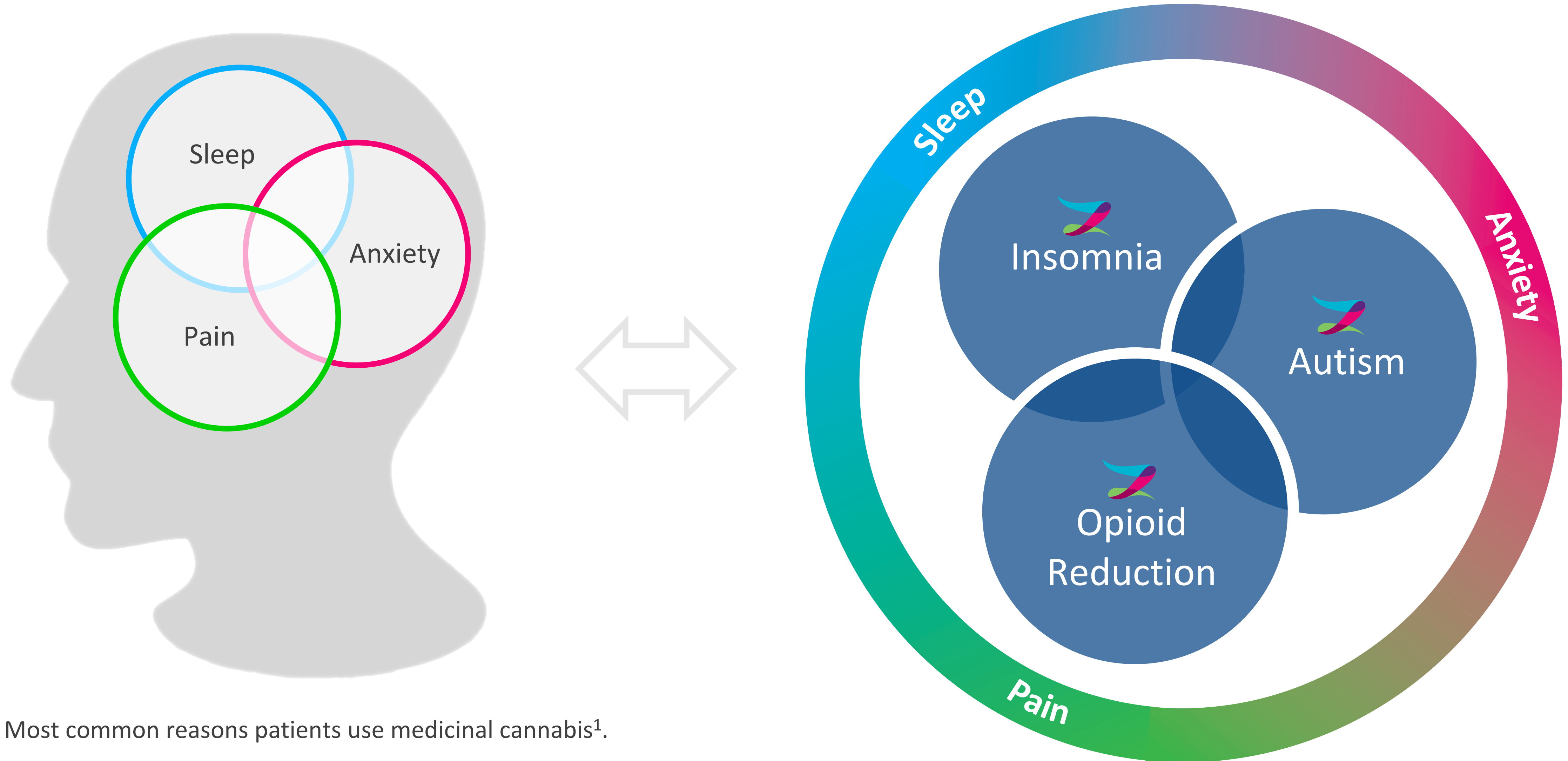
Global Distribution partnerships



Clinically Validated Products & Product Data



FOCUS ON CURRENT PATIENT'S NEEDS = LARGE ADDRESSABLE MARKET

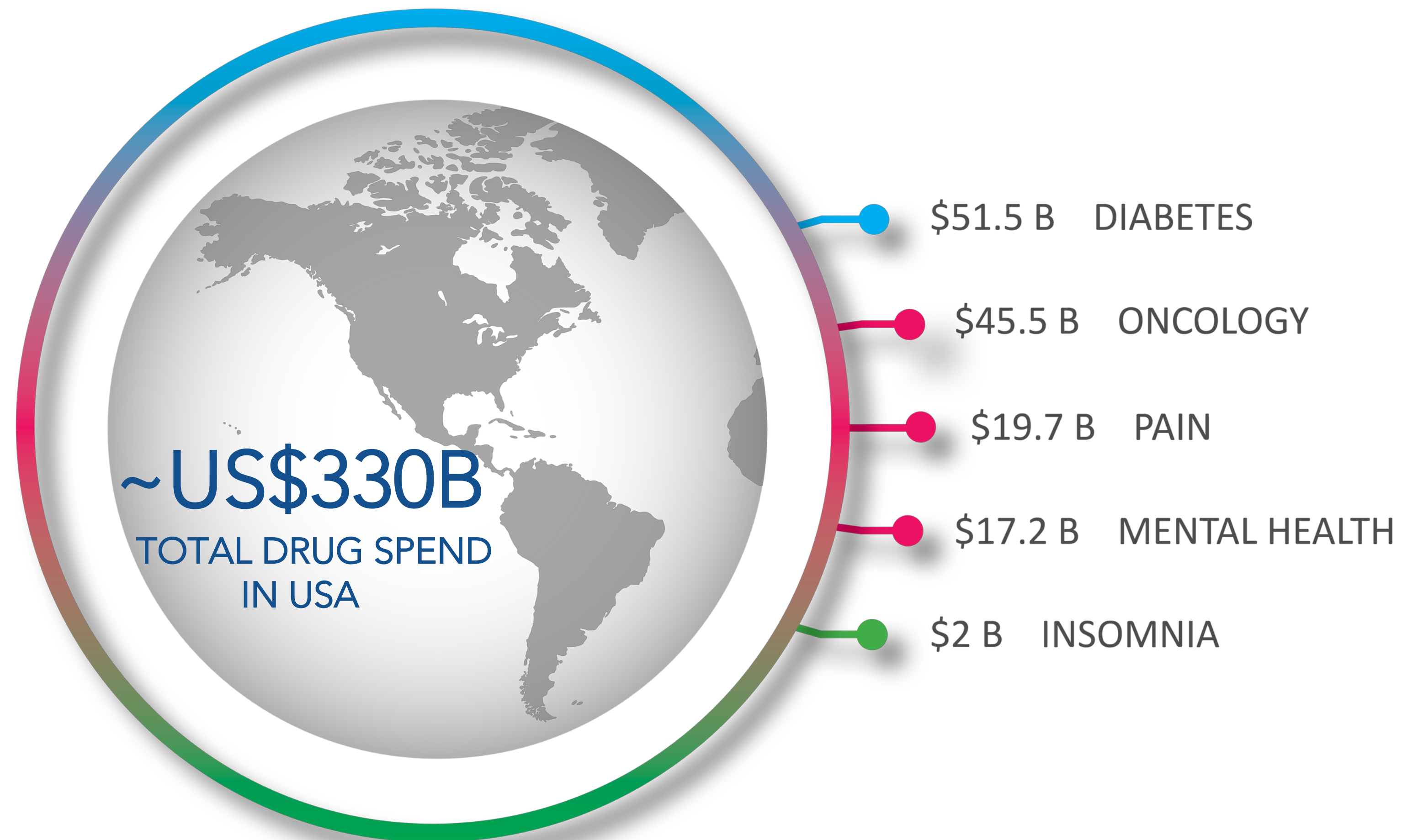


Most common reasons patients use medicinal cannabis¹.

1. Lintzeris, N et al., Medical Cannabis in Australia, 2016: the Cannabis as medicine Survey (CAM-16). *The Medical Journal of Australia*, 209(05), 211-216.



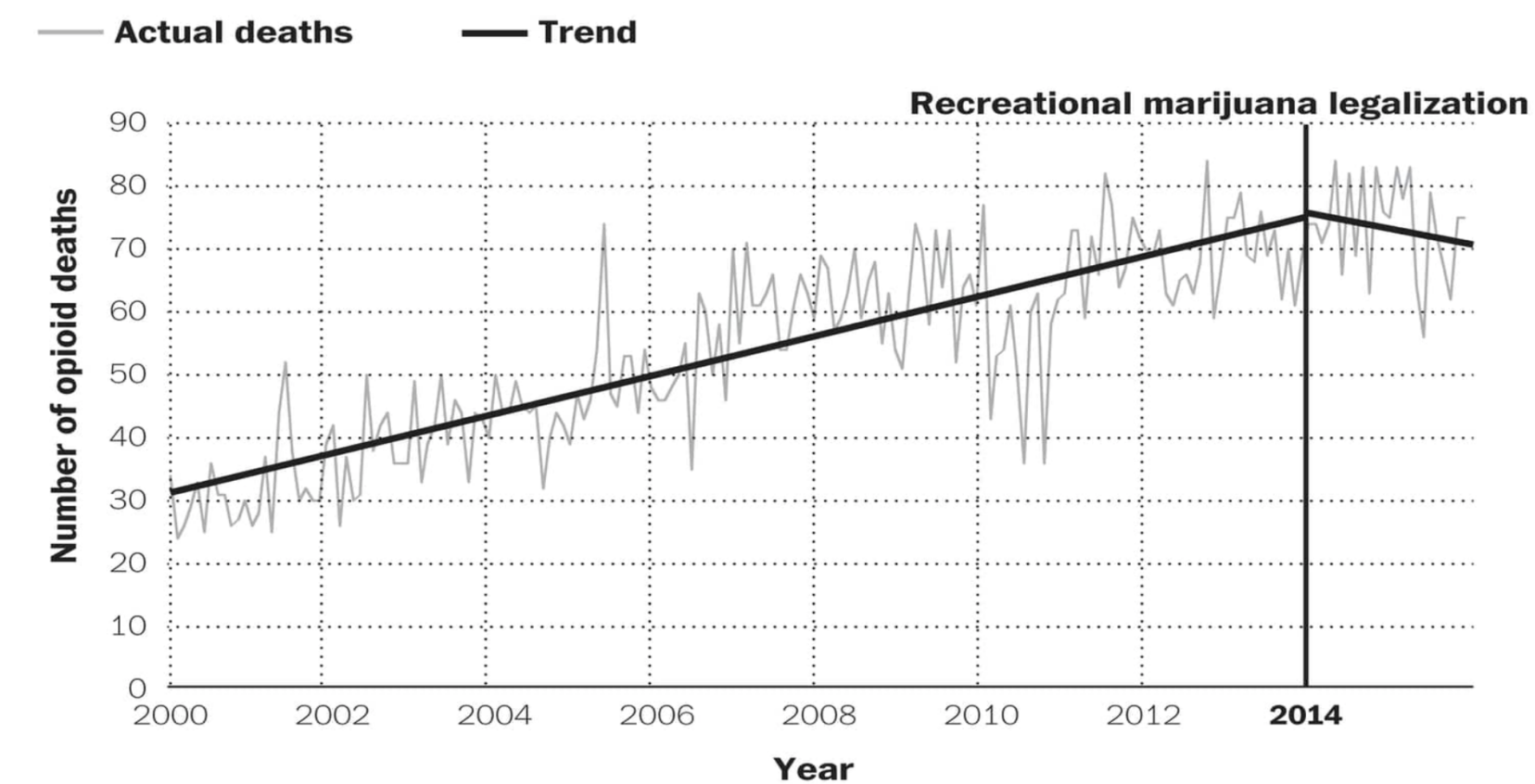
STRATEGIC FOCUS ON DISRUPTING LARGE MARKETS



EVIDENCE CANNABIS IS DISRUPTING LARGE MARKETS

In Colorado, opioid deaths fall following marijuana legalization

Monthly opioid deaths in Colorado, 2000 – 2015

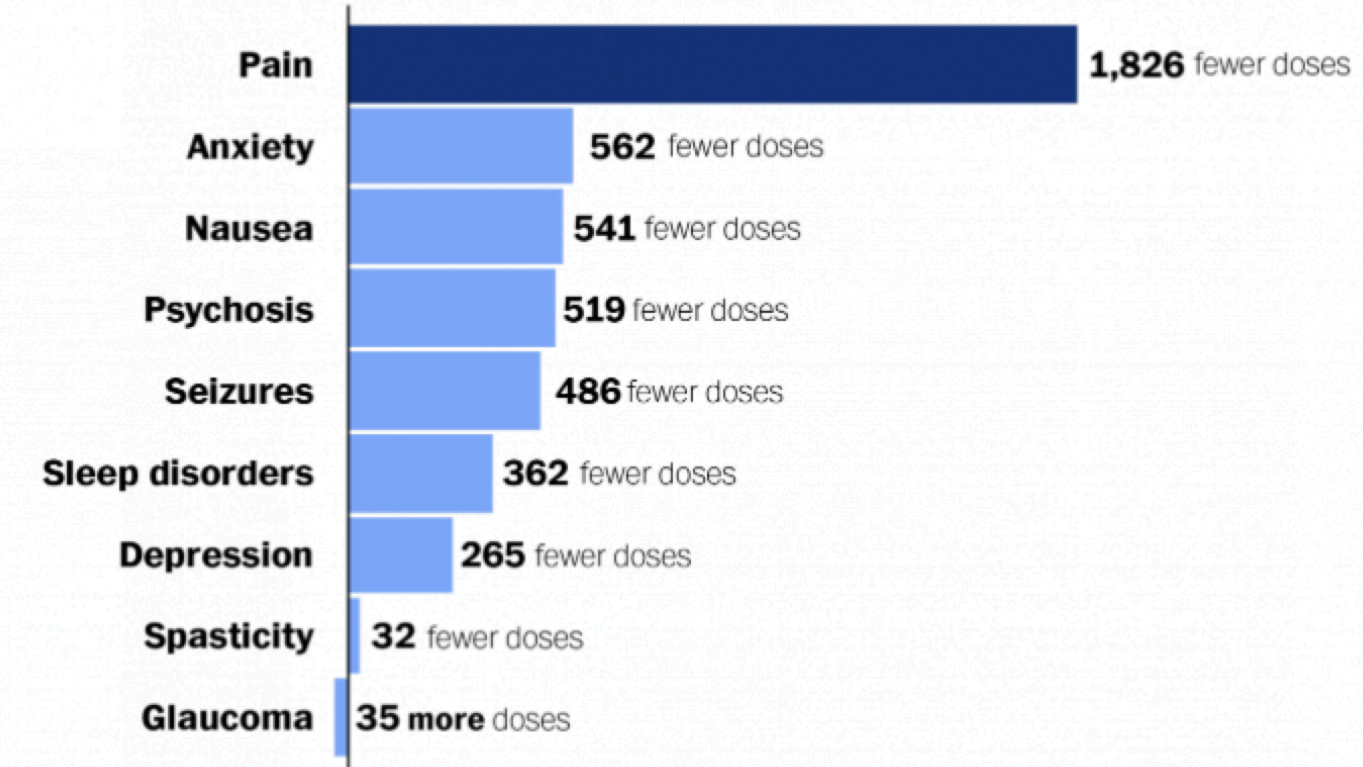


WAPQ.ST/WONKBLOG

Source: Livingston et. al.

Fewer pills prescribed in medical pot states

Difference between annual drug doses prescribed per physician in medical marijuana states, and in states without medical marijuana laws, by drug category



WAPQ.ST/WONKBLOG

Source: Bradford and Bradford, Health Affairs, July 2016

Estimated annual cannabis substitution cost = \$4.86 billion in 2019

(New Frontier Data¹)




CORPORATE SNAPSHOT?



CORPORATE SNAPSHOT

FINANCIALS (as at 11 Mar 2019)

	AUD\$
• Share Price	\$0.044
• 52w Range	\$0.033 - 0.145
• 4w Av Trading Vol	0.6m
• Shares on Issue	755m
• Market Capitalisation	\$33m
• Cash (Mar, 2019)	\$4.0m
• Cash Burn (2018 FY)	\$1.73m

 **CannPal** options (@20c) 7.25m

SHARE PRICE (as at 10 May 2019)

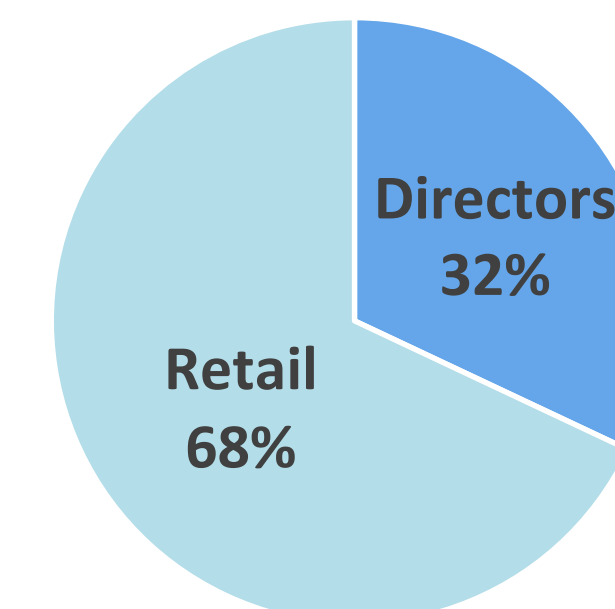


CAPITAL STRUCTURE

Top 20 Shareholders: 45%
Listed Options: 86m

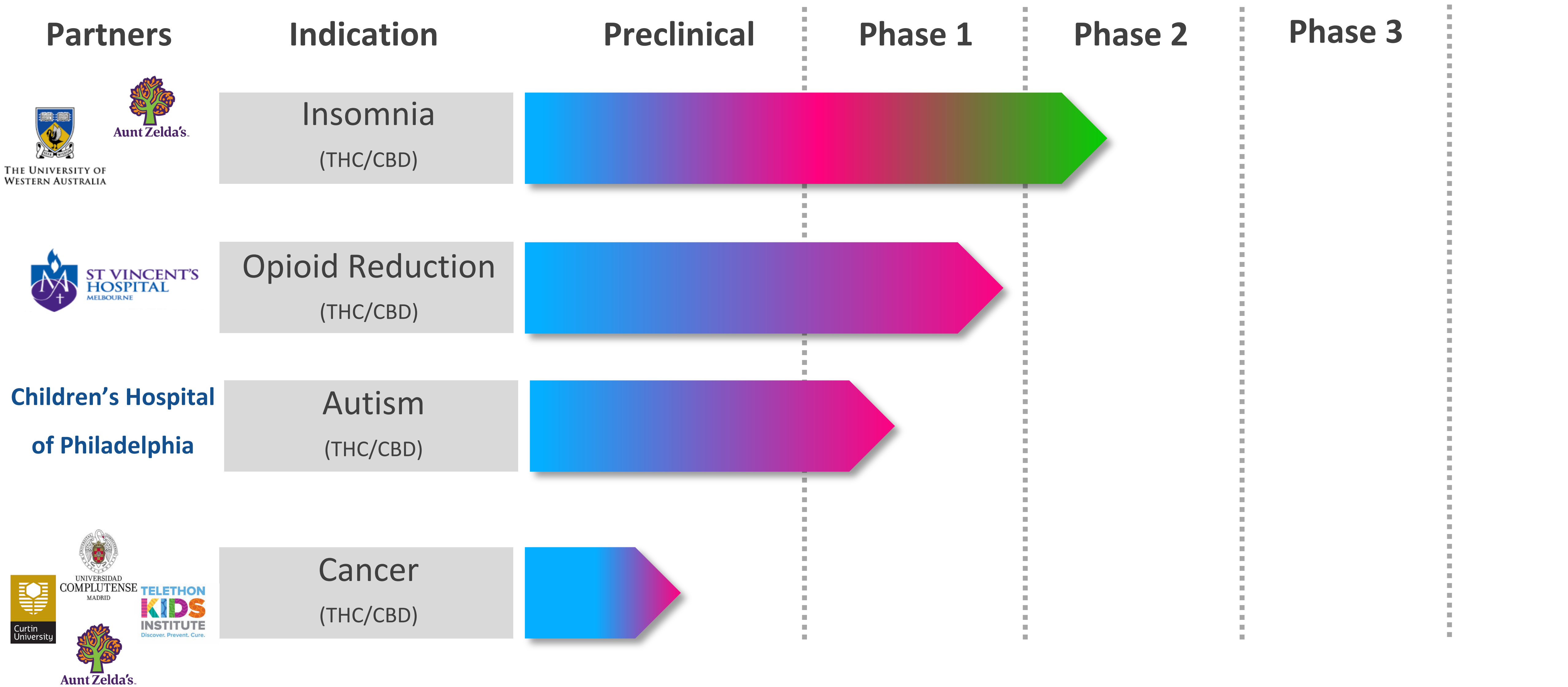
Top 4 Shareholders

- Mara Gordon 10.5%
- Jason Peterson 10.0%
- Harry Karelis 6.6%
- Stewart Washer 4.7%

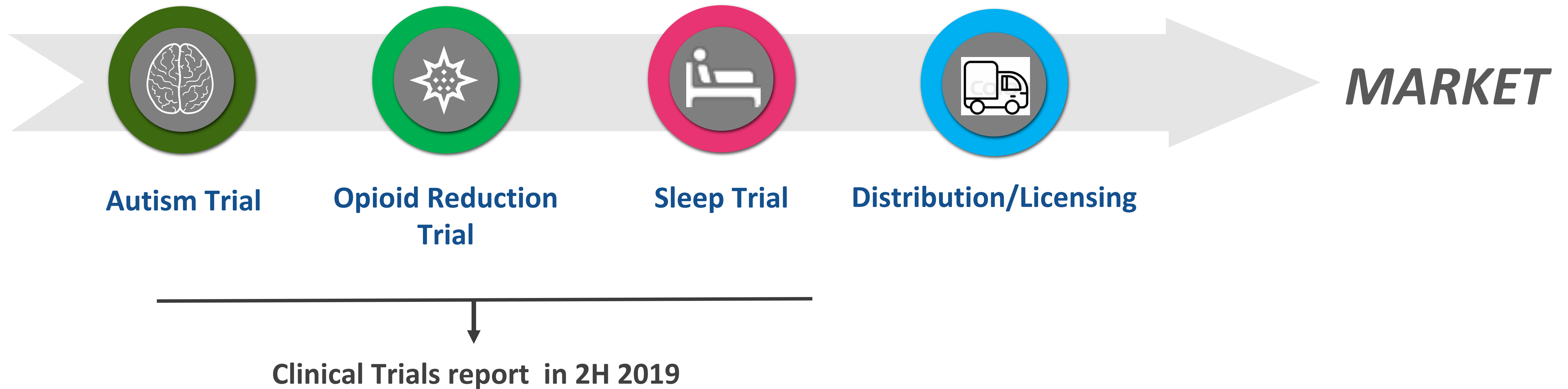


* Board voluntary 12 month escrow

ZELDA'S PRODUCT PIPELINE



UPCOMING ACTIVITY & MAJOR MILESTONE PIPELINE





***ZELDA THERAPEUTICS OFFERS INVESTORS EXPOSURE TO A RAPIDLY
EMERGING GLOBAL INDUSTRY AT VERY ATTRACTIVE VALUATIONS AND
WITH SIGNIFICANT VALUE DRIVERS OVER THE NEXT 12-18 MONTHS***

